

CURVE	DELTA	RADIUS	LENGTH	TANGENT	CHORD
1	20°35'09"	540.00'	194.02'	98.07'	192.97'
2	34°50'08"	260.00'	158.08'	81.57'	155.65'
3	36°20'19"	260.00'	164.90'	83.33'	162.15'
4	30°00'00"	20.00'	31.42'	20.00'	28.28'
5	37°40'04"	250.00'	164.36'	85.27'	161.41'
6	18°46'22"	250.00'	81.91'	41.33'	81.55'
7	04°32'58"	1062.59'	84.37'	42.21'	84.35'
8	04°23'31"	1079.59'	82.76'	41.40'	82.74'
9	15°06'12"	776.50'	204.69'	102.94'	209.10'
10	17°58'06"	743.50'	233.17'	117.55'	232.21'
11	40°12'31"	340.00'	238.60'	124.45'	233.74'
12	02°28'42"	250.00'	10.81'	5.40'	10.81'
13	15°31'07"	250.00'	48.15'	24.29'	47.94'
14	6°11'08"	340.00'	36.71'	18.37'	36.69'

#### BASIS OF BEARINGS

THE BASIS OF BEARINGS FOR THIS SURVEY IS THE NORTH LINE OF THE N.E. 1/4 OF SECTION 23, T. 19 N., R. 53 E., M.D.B. & M., AS SHOWN ON THE PLAT OF THE TOWNSITE OF EUREKA, ON FILE IN THE OFFICE OF THE U.S. DEPARTMENT OF INTERIOR, I.E. N 89°34'00"E.

#### REFERENCE DOCUMENTS

- A) G.L.O. PLAT OF THE TOWNSITE OF EUREKA, RECORDED IN THE U.S. DEPARTMENT OF THE INTERIOR GOVERNMENT LAND OFFICE IN 1937.  
 B) RECORD OF SURVEY FOR THE EUREKA COUNTY BOARD OF COMMISSIONERS, IN JULY OF 1982.  
 C) AMENDED PLAT OF RUBY HILL ESTATES SUBDIVISION PREPARED BY LUMOS AND ASSOCIATES.

#### LEGEND:

- SET 5/8" REBAR W/CAP No. 6304  
 ● FOUND AS NOTED  
 ⊙ FOUND STATE HWY. MONUMENT  
 N 90°00'00"~20.00' BEARING & DISTANCE AS MEASURED  
 (N 90°00'00"~20.00')<sup>A</sup> BEARING & DISTANCE PER REF. DOC.

#### NOTE:

A 5' P.U.E. & D.E. ALONG SIDE & BACK LOT LINES AND A 7.5' P.U.E. & D.E. ALONG FRONT LOT LINES ARE CREATED BY THIS PARCEL MAP.

#### OWNER'S CERTIFICATE

KNOW ALL MEN BY THESE PRESENTS, THAT EUREKA TOWNSITE, THE UNDERSIGNED, BEING OWNERS OF A PORTION OF THE SE 1/4 OF SECTION 14, AND THE NE 1/4 OF SECTION 23, T. 19 N., R. 53 E., M.D.B. & M., DO HEREBY CONSENT TO THE PREPARATION AND FILING OF THIS MAP, THAT THEY DO HEREBY OFFER WITHOUT RESERVATION FOR STREET AND PUBLIC UTILITY PURPOSES, ALL THE AREAS DELINEATED FOR SUCH PURPOSES ON THIS MAP. IN WITNESS WHEREOF, WE HAVE HERETO SET OUR HANDS THE DAY OF \_\_\_\_\_, 1988.

*Libby E. Hegaway*  
 CHAIRMAN, EUREKA COUNTY COMMISSION

*Paul Shengle*  
 ATTEST, EUREKA COUNTY CLERK

#### SURVEYORS CERTIFICATE

I, WAYNE KOCHER, A REGISTERED LAND SURVEYOR IN THE STATE OF NEVADA, CERTIFY THAT:

- (1.) THIS IS A TRUE AND ACCURATE REPRESENTATION OF THE LANDS SURVEYED UNDER MY SUPERVISION AT THE INSTANCE OF THE EUREKA TOWNSITE.
- (2.) THE LANDS SURVEYED LIE WITHIN SEC. 14, T. 19 N., R. 53 E., M.D.B. & M., AND THE SURVEY WAS COMPLETED ON \_\_\_\_\_, 1988.
- (3.) THIS MAP COMPLIES WITH THE APPLICABLE STATE STATUTES AND ANY LOCAL ORDINANCES.
- (4.) THE MONUMENTS ARE OF THE CHARACTER SHOWN AND OCCUPY THE POSITIONS INDICATED.

*Wayne Kocher*  
 WAYNE KOCHER, R.L.S. 6304  
 8/4/88  
 REGISTERED LAND SURVEYOR - STATE OF NEVADA  
 No. 6304

#### ENGINEERS CERTIFICATE

I, \_\_\_\_\_, CERTIFY THAT I HAVE EXAMINED THIS MAP CONSISTING OF ONE (1) SHEET AND THAT ALL PROVISIONS AND ORDINANCES APPLICABLE HAVE BEEN COMPLIED WITH AND THAT I AM SATISFIED THAT THIS MAP IS TECHNICALLY CORRECT. A PROPER DEPOSIT OR PERFORMANCE BOND HAS BEEN POSTED GUARANTEEING THE SETTING OF THE MONUMENTS SHOWN ON OR BEFORE \_\_\_\_\_.

COUNTY ENGINEER \_\_\_\_\_ DATE \_\_\_\_\_

#### UTILITY APPROVALS

THIS FINAL MAP AND THE EASEMENTS SHOWN ON THIS PLAT HAVE BEEN CHECKED AND APPROVED BY THE UNDERSIGNED.

NEVADA BELL \_\_\_\_\_ DATE \_\_\_\_\_ MT. WHEELER POWER INC. \_\_\_\_\_ DATE \_\_\_\_\_

#### APPROVAL EUREKA COUNTY PLANNING COMMISSION

AT A REGULAR MEETING OF THE EUREKA COUNTY PLANNING COMMISSION, STATE OF NEVADA, HELD ON THE \_\_\_\_\_ DAY OF \_\_\_\_\_, 1988, THIS MAP WAS APPROVED PURSUANT TO N.R.S. CHAPTER 278.

*Paul Shengle*  
 CHAIRMAN, EUREKA COUNTY PLANNING COMMISSION

*Paul Shengle*  
 ATTEST, EUREKA COUNTY CLERK

#### APPROVAL EUREKA COUNTY COMMISSIONER'S

AT A REGULAR MEETING OF THE BOARD OF COUNTY COMMISSIONER'S OF EUREKA COUNTY, STATE OF NEVADA, HELD ON THE \_\_\_\_\_ DAY OF \_\_\_\_\_, 1988, THIS MAP WAS APPROVED PURSUANT TO N.R.S. CHAPTER 278.

*Libby E. Hegaway*  
 CHAIRMAN, EUREKA COUNTY COMMISSION

*Paul Shengle*  
 ATTEST, EUREKA COUNTY CLERK

#### RECORDER CERTIFICATE

FILED AT THE REQUEST OF Eureka County  
 ON THE Aug 1988 DAY OF Aug, 1988, AT \_\_\_\_\_ MIN. PAST 3p. M.,  
 IN THE OFFICIAL RECORDS OF EUREKA COUNTY, NEVADA.  
*W. W. ...*

EUREKA COUNTY RECORDER 120756  
120756

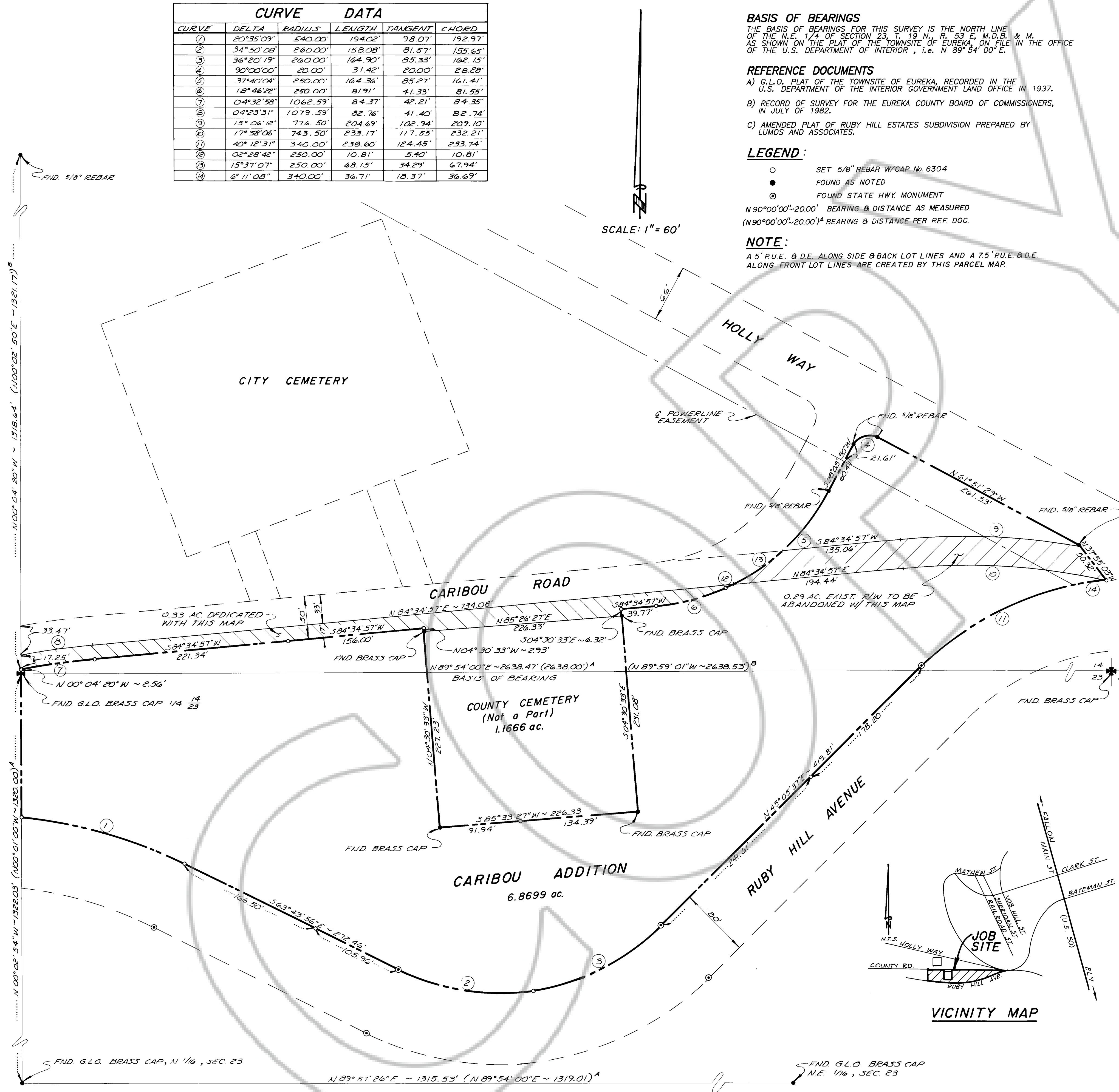
#### AMENDED PARCEL MAP FOR CARIBOU ADDITION

LOCATED WITHIN THE SO. 1/2 OF THE SE 1/4 SEC. 14 AND THE NO. 1/2 OF THE NE 1/4, SEC. 23, T. 19 N., R. 53 E., M.D.B. & M., EUREKA TOWNSITE, EUREKA COUNTY, NEVADA

LUMOS & ASSOCIATES, INC.  
 800 GRAVES LANE  
 CARSON CITY, NEVADA 89701  
 (702) 883-7077

JOB #035-06-820

SHEET 1 OF 1



120756