

CURVE		DATA			
CURVE	DELTA	RADIUS	LENGTH	TANGENT	CHORD
①	15° 06' 12"	776.50'	204.69'	102.94'	204.10'
②	04° 06' 02"	1112.59'	79.63'	39.83'	79.61'
③	90° 00' 00"	20.00'	31.42'	20.00'	28.28'
④	56° 26' 26"	200.00'	197.02'	107.33'	189.15'
⑤	08° 04' 20"	776.50'	109.40'	54.79'	109.31'
⑥	19° 34' 15"	250.00'	85.39'	43.12'	84.98'

BASIS OF BEARINGS

THE BASIS OF BEARINGS FOR THIS SURVEY IS THE NORTH LINE OF THE N.E. 1/4 OF SECTION 23, T. 19 N., R. 53 E., M.D.B. & M., AS SHOWN ON THE PLAT OF THE TOWNSITE OF EUREKA, ON FILE IN THE OFFICE OF THE U.S. DEPARTMENT OF INTERIOR, I.C. N 89 54 00 E.

REFERENCE DOCUMENTS

- A) G.L.O. PLAT OF THE TOWNSITE OF EUREKA, RECORDED IN THE U.S. DEPARTMENT OF THE INTERIOR GOVERNMENT LAND OFFICE IN 1937.
- B) RECORD OF SURVEY FOR THE EUREKA COUNTY BOARD OF COMMISSIONERS, IN JULY OF 1982.
- C) AMENDED PLAT OF RUBY HILL ESTATES SUBDIVISION PREPARED BY LUMOS AND ASSOCIATES.

LEGEND:

- SET 5/8" REBAR W/CAP No. 6304
 - FOUND AS NOTED
 - ⊙ FOUND STATE HWY. MONUMENT
- N 90° 00' 00" 20.00' BEARING & DISTANCE AS MEASURED
 (N 90° 00' 00" 20.00')^A BEARING & DISTANCE PER REF. DOC.

NOTE:

A 5' P.U.E. & D.E. ALONG SIDE & BACK LOT LINES AND A 7.5' P.U.E. & D.E. ALONG FRONT LOT LINES ARE CREATED BY THIS PARCEL MAP.

OWNER'S CERTIFICATE

KNOW ALL MEN BY THESE PRESENTS, THAT EUREKA TOWNSITE, THE UNDERSIGNED, BEING OWNERS OF A PORTION OF THE SE 1/4 OF SECTION 14, AND THE NE 1/4 OF SECTION 23, T. 19 N., R. 53 E., M.D.B. & M., DO HEREBY CONSENT TO THE PREPARATION AND FILING OF THIS MAP, THAT THEY DO HEREBY OFFER WITHOUT RESERVATION FOR STREET AND PUBLIC UTILITY PURPOSES, ALL THE AREAS DELINEATED FOR SUCH PURPOSES ON THIS MAP. IN WITNESS WHEREOF, WE HAVE HERETO SET OUR HANDS THE DAY OF _____, 1988.

LeRoy Etchegoyen
 CHAIRMAN, EUREKA COUNTY COMMISSION

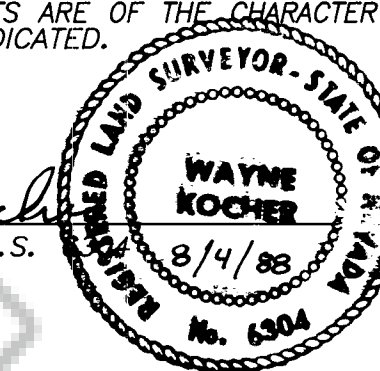
Paul Shangle
 ATTEST, EUREKA COUNTY CLERK

SURVEYORS CERTIFICATE

I, WAYNE KOCHER, A REGISTERED LAND SURVEYOR IN THE STATE OF NEVADA, CERTIFY THAT:

- (1) THIS IS A TRUE AND ACCURATE REPRESENTATION OF THE LANDS SURVEYED UNDER MY SUPERVISION AT THE INSTANCE OF THE EUREKA TOWNSITE.
- (2) THE LANDS SURVEYED LIE WITHIN SEC. 14 & 23, T. 19 N., R. 53 E., M.D.B. & M., AND THE SURVEY WAS COMPLETED ON _____, 1988.
- (3) THIS PLAT COMPLIES WITH THE APPLICABLE STATE STATUTES AND ANY LOCAL ORDINANCES.
- (4) THE MONUMENTS ARE OF THE CHARACTER SHOWN AND OCCUPY THE POSITIONS INDICATED.

Wayne Kocher
 WAYNE KOCHER, R.L.S.



ENGINEERS CERTIFICATE

I, _____, CERTIFY THAT I HAVE EXAMINED THIS MAP CONSISTING OF ONE (1) SHEET, AND THAT ALL PROVISIONS AND ORDINANCES APPLICABLE HAVE BEEN COMPLIED WITH AND THAT I AM SATISFIED THAT THIS MAP IS TECHNICALLY CORRECT. A PROPER DEPOSIT OR PERFORMANCE BOND HAS BEEN POSTED GUARANTEEING THE SETTING OF THE MONUMENTS SHOWN ON OR BEFORE _____.

COUNTY ENGINEER _____ DATE _____

UTILITY APPROVALS

THIS FINAL MAP AND THE EASEMENTS SHOWN ON THIS PLAT HAVE BEEN CHECKED AND APPROVED BY THE UNDERSIGNED.

NEVADA BELL _____ DATE _____ MT. WHEELER POWER INC. _____ DATE _____

APPROVAL EUREKA COUNTY PLANNING COMMISSION

AT A REGULAR MEETING OF THE EUREKA COUNTY PLANNING COMMISSION, STATE OF NEVADA, HELD ON THE _____ DAY OF _____, 1988, THIS MAP WAS APPROVED PURSUANT TO N.R.S. CHAPTER 27B.

Paul Shangle
 CHAIRMAN, EUREKA COUNTY PLANNING COMMISSION

Paul Shangle
 ATTEST, EUREKA COUNTY CLERK

APPROVAL EUREKA COUNTY COMMISSIONER'S

AT A REGULAR MEETING OF THE BOARD OF COUNTY COMMISSIONER'S OF EUREKA COUNTY, STATE OF NEVADA, HELD ON THE _____ DAY OF _____, 1988, THIS MAP WAS APPROVED PURSUANT TO N.R.S. CHAPTER 27B.

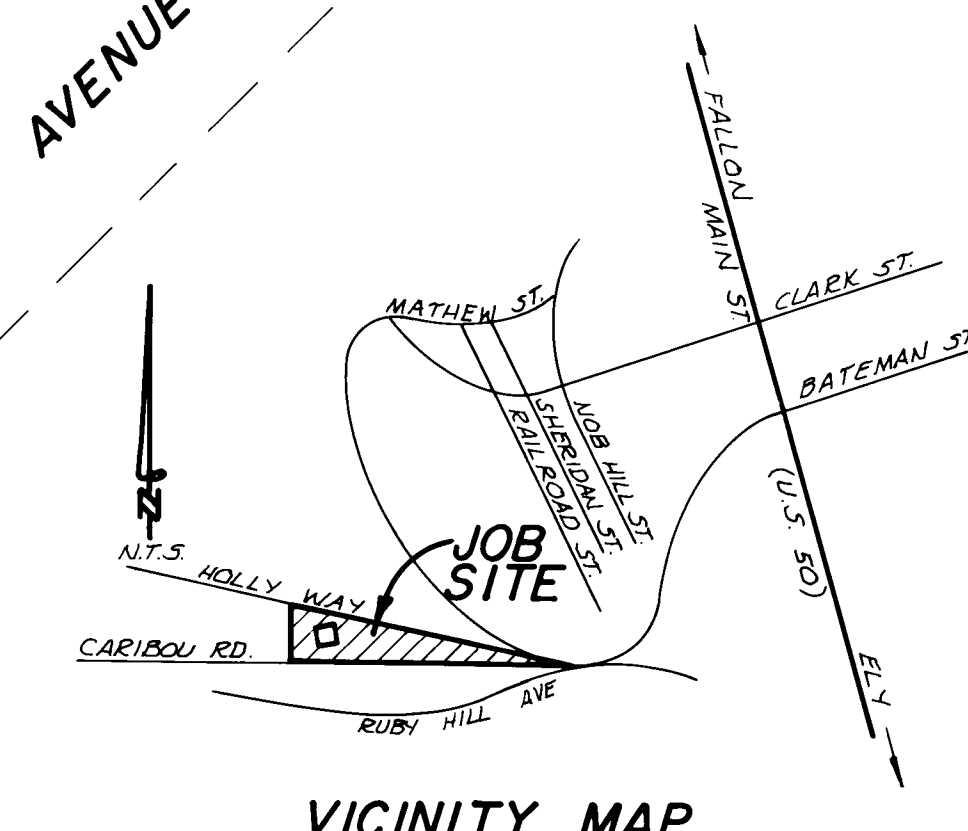
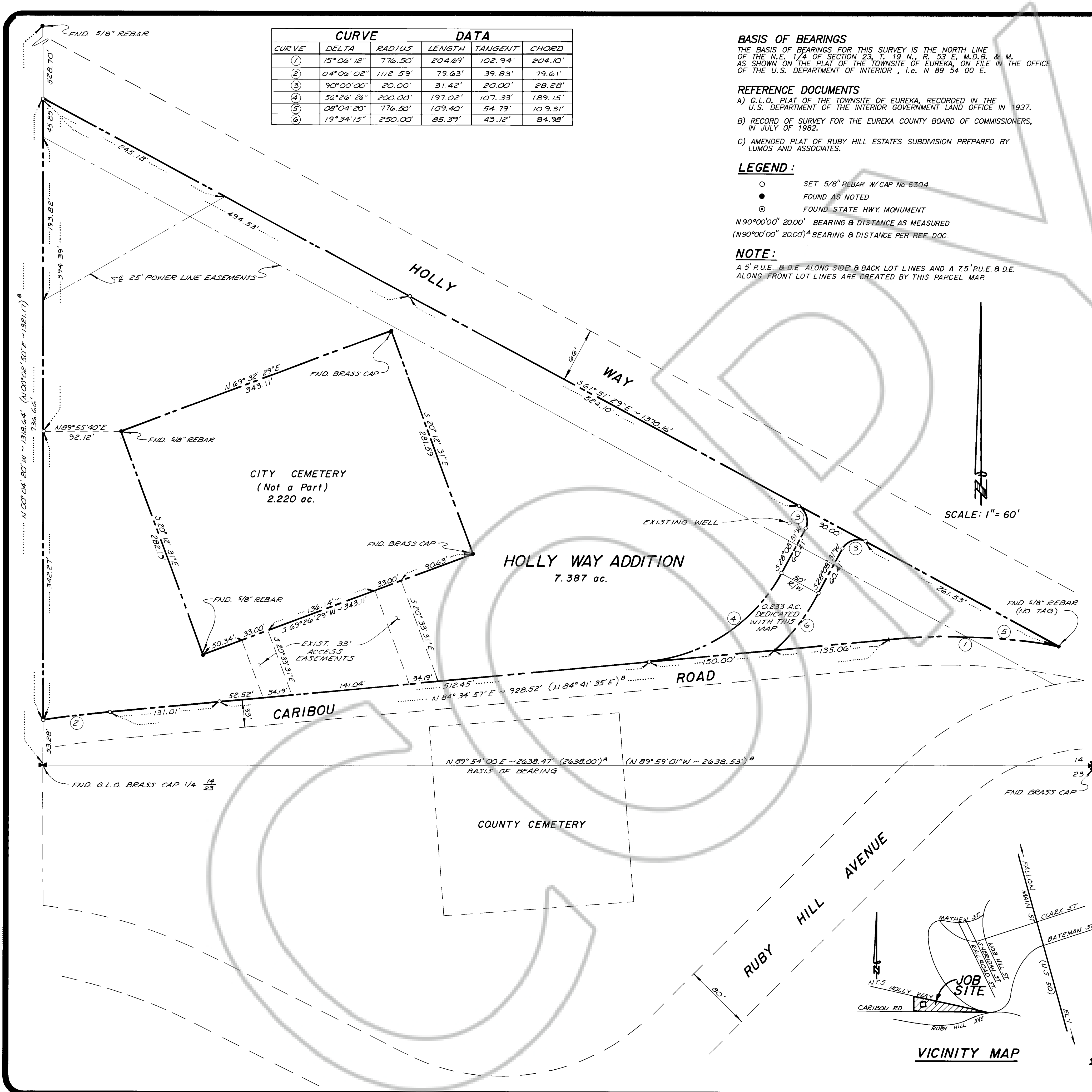
LeRoy Etchegoyen
 CHAIRMAN, EUREKA COUNTY COMMISSION

Paul Shangle
 ATTEST, EUREKA COUNTY CLERK

RECORDER CERTIFICATE

FILED AT THE REQUEST OF Eureka County ON THE 19th DAY OF Aug, 1988, AT 4:22 MIN. PAST 3p. M., IN THE OFFICIAL RECORDS OF EUREKA COUNTY, NEVADA.

2177
 EUREKA COUNTY RECORDER _____ 120757



AMENDED PARCEL MAP FOR HOLLY WAY ADDITION
 LOCATED WITHIN THE SOUTH 1/2 OF THE SOUTHEAST 1/4 OF SECTION 14, T. 19 N., R. 53 E., M.D.B. & M., EUREKA TOWNSITE, EUREKA COUNTY, NEVADA

LUMOS & ASSOCIATES, INC.
 800 GRAVES LANE
 CARSON CITY, NEVADA 89701
 (702) 883-7077

JOB #035-06-820 SHEET 1 OF 1

120757