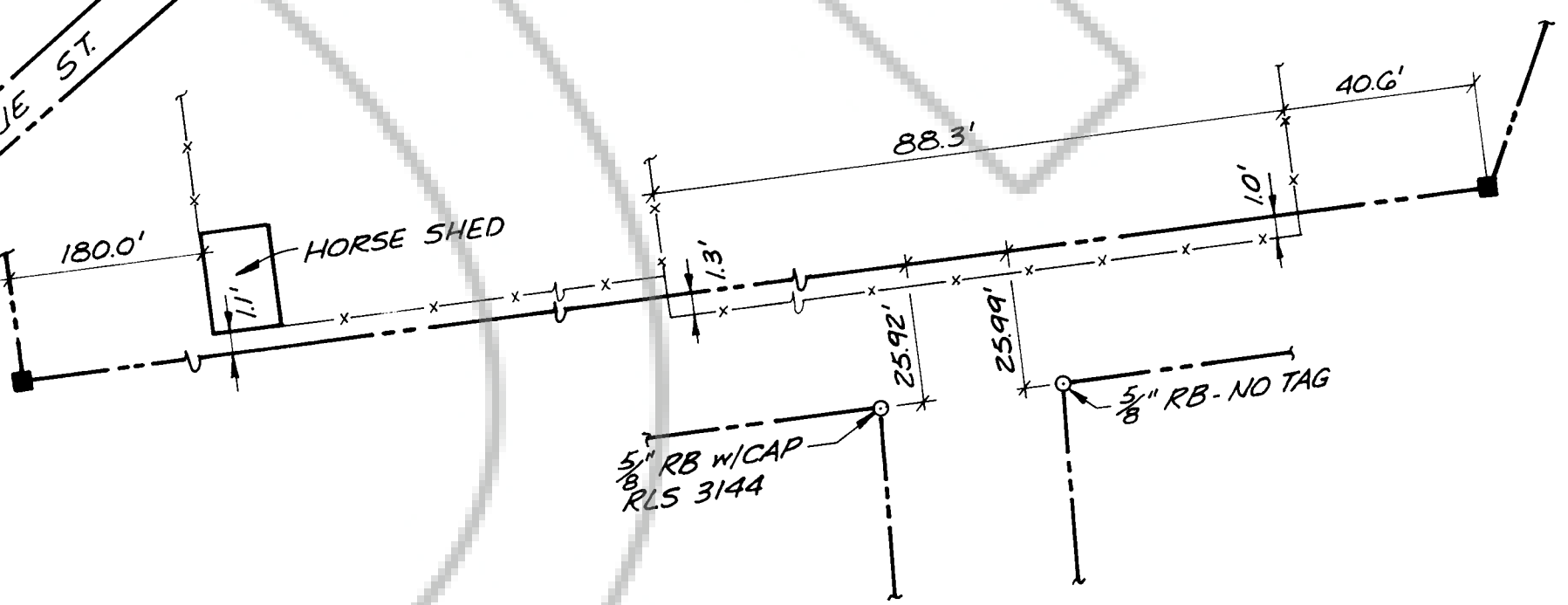
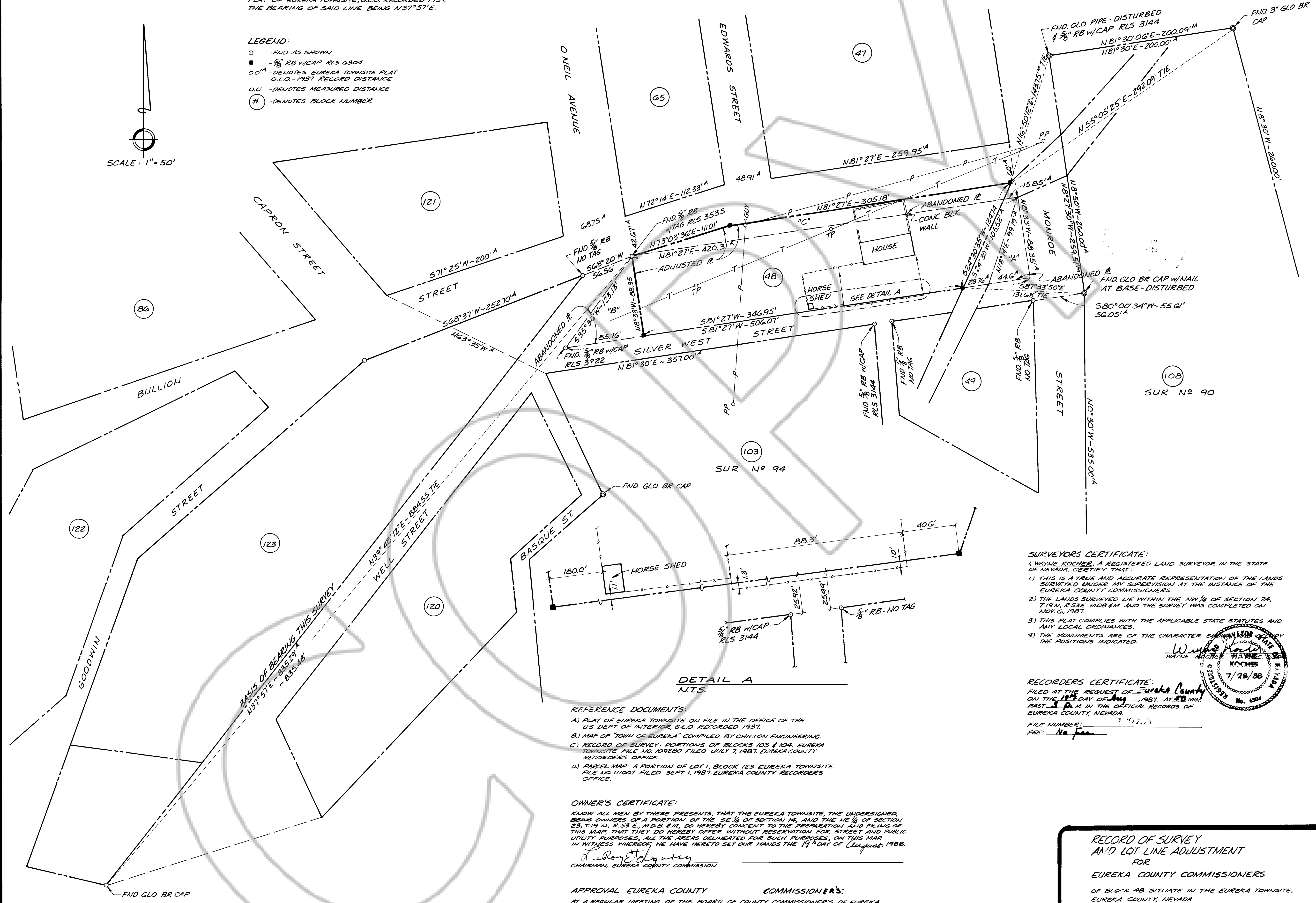


**BASIS OF BEARINGS:**  
 THE BASIS OF BEARINGS FOR THIS SURVEY IS THE  
 EASTERLY LINE OF BLOCK 123 AS SHOWN ON THE  
 PLAT OF EUREKA TOWNSITE, G.L.O. RECORDED 1937,  
 THE BEARING OF SAID LINE BEING N37°51'E.

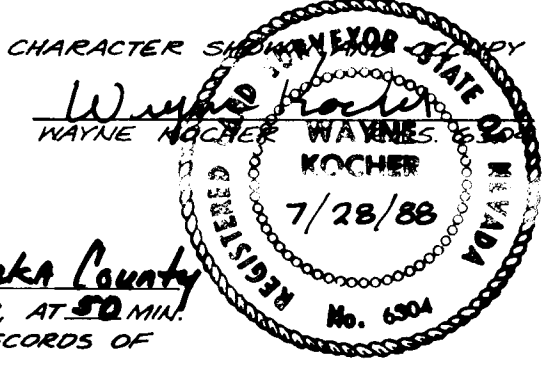
PARCEL "A": CRUTCHLEY TO EUREKA COUNTY - 1970 SQ. FT.  
 PARCEL "B": CRUTCHLEY TO EUREKA COUNTY - 3788 SQ. FT.  
 PARCEL "C": EUREKA COUNTY TO CRUTCHLEY - 5747 SQ. FT.  
 BLOCK 48: ADJUSTED AREA - 38,940 SQ. FT.

- LEGEND:**
- - FUND. AS SHOWN
  - - 5/8" RB W/CAP RLS 6304
  - ' - DENOTES EUREKA TOWNSITE PLAT G.L.O. - 1937 RECORD DISTANCE
  - ' - DENOTES MEASURED DISTANCE
  - # - DENOTES BLOCK NUMBER

SCALE: 1" = 50'



**SURVEYORS CERTIFICATE:**  
 I, WAYNE KOCHER, A REGISTERED LAND SURVEYOR IN THE STATE OF NEVADA, CERTIFY THAT:  
 1) THIS IS A TRUE AND ACCURATE REPRESENTATION OF THE LANDS SURVEYED UNDER MY SUPERVISION AT THE INSTANCE OF THE EUREKA COUNTY COMMISSIONERS.  
 2) THE LANDS SURVEYED LIE WITHIN THE NW 1/4 OF SECTION 28, T19N, R33E, MDB & M AND THE SURVEY WAS COMPLETED ON 10/16, 1987.  
 3) THIS PLAT COMPLIES WITH THE APPLICABLE STATE STATUTES AND ANY LOCAL ORDINANCES.  
 4) THE MONUMENTS ARE OF THE CHARACTER SPECIFIED AND THE POSITIONS INDICATED.



**RECORDERS CERTIFICATE:**  
 FILED AT THE REQUEST OF Eureka County  
 ON THE 11th DAY OF July, 1987, AT 10:00 AM  
 PAST 10 A.M. IN THE OFFICIAL RECORDS OF  
 EUREKA COUNTY, NEVADA.  
 FILE NUMBER: 1987-11-11  
 FEE: No fee

- REFERENCE DOCUMENTS:**
- A) PLAT OF EUREKA TOWNSITE ON FILE IN THE OFFICE OF THE U.S. DEPT. OF INTERIOR, G.L.O. RECORDED 1937.
  - B) MAP OF "TOWN OF EUREKA" COMPILED BY CHILTON ENGINEERING.
  - C) RECORD OF SURVEY: PORTIONS OF BLOCKS 103 & 104, EUREKA TOWNSITE FILE NO. 109280 FILED JULY 7, 1987, EUREKA COUNTY RECORDERS OFFICE.
  - D) PARCEL MAP: A PORTION OF LOT 1, BLOCK 123 EUREKA TOWNSITE FILE NO. 111007 FILED SEPT. 1, 1987 EUREKA COUNTY RECORDERS OFFICE.

**OWNER'S CERTIFICATE:**  
 KNOW ALL MEN BY THESE PRESENTS, THAT THE EUREKA TOWNSITE, THE UNDERSIGNED, BEING OWNERS OF A PORTION OF THE SE 1/4 OF SECTION 28, T19N, R33E, MDB & M, DO HEREBY CONSENT TO THE PREPARATION AND FILING OF THIS MAP, THAT THEY DO HEREBY OFFER WITHOUT RESERVATION FOR STREET AND PUBLIC UTILITY PURPOSES, ALL THE AREAS DELINEATED FOR SUCH PURPOSES, ON THIS MAP IN WITNESS WHEREOF, WE HAVE HERETO SET OUR HANDS THE 11th DAY OF JULY, 1988.  
 Wayne Kocher  
 CHAIRMAN, EUREKA COUNTY COMMISSION

**APPROVAL EUREKA COUNTY COMMISSIONERS:**  
 AT A REGULAR MEETING OF THE BOARD OF COUNTY COMMISSIONERS OF EUREKA COUNTY, STATE OF NEVADA, HELD ON 11th DAY OF JULY, 1988.  
 THIS MAP WAS APPROVED PURSUANT TO N.R.S. CHAPTER 278.  
 Wayne Kocher  
 CHAIRMAN, EUREKA COUNTY COMMISSION  
 David Shugart  
 ATTNEY, EUREKA COUNTY CLERK

**RECORD OF SURVEY AND LOT LINE ADJUSTMENT FOR EUREKA COUNTY COMMISSIONERS OF BLOCK 48 SITUATE IN THE EUREKA TOWNSITE, EUREKA COUNTY, NEVADA**  
 ENGINEER:  
 LIMOS & ASSOCIATES, INC.  
 625 FAIRVIEW DR., SUITE 102  
 CARSON CITY, NEVADA 89701

120758

#035-06-1119

DRAWING 44 132