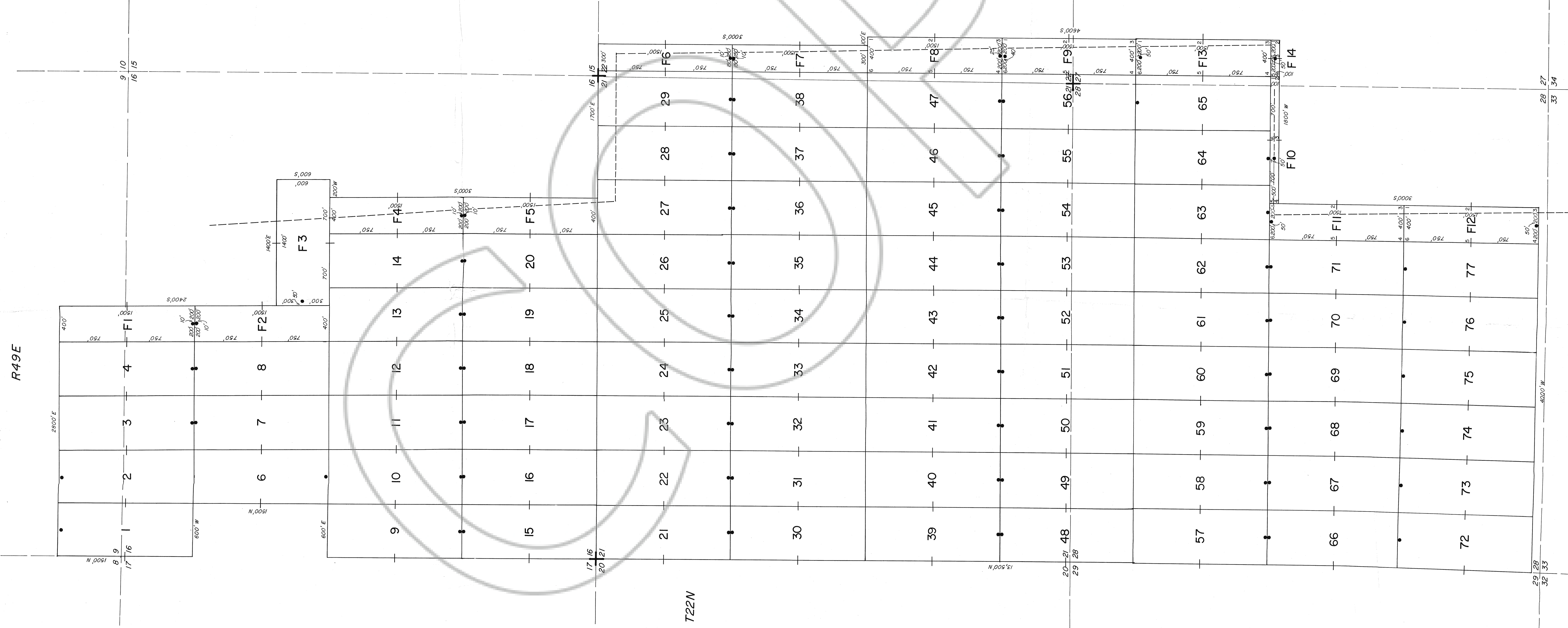


R49E



LOCATOR

ECM, Inc.
2720 3rd Ave. North
Billings, MT. 59101

LOCATION DATES

July 15, 1988 GBW 3, 4, 7, 8, 13, 14, 19, 20, F1-F5
July 16, 1988 GBW 9-12, 15-18, 21-64, 66-77, F6-F10, F14
July 17, 1988 GBW 65, F11-F13
July 20, 1988 GBW 1, 2, 6

BASIS OF CONTROL

Bearing: NE corner Sec. 21, T22N, R49E was occupied.
A backsight was taken on NW corner Sec. 21 of 270°.

Distance: SW corner of GBW 15 is common to NW corner Sec. 21, T22N, R49E.

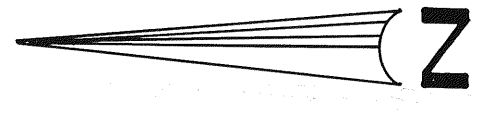
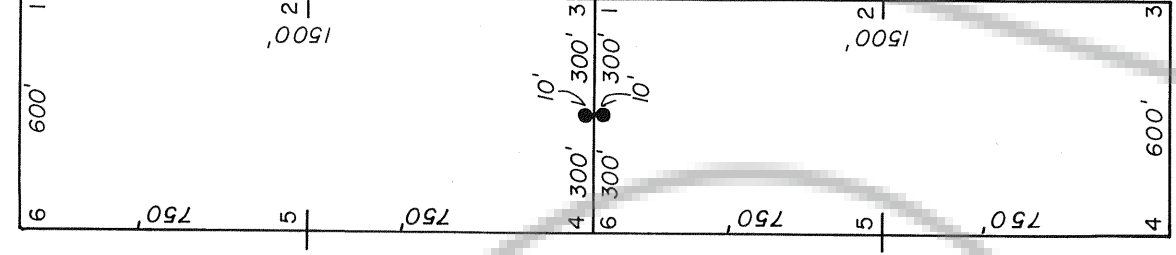
EXPLANATION

- + Found Section Corner
- Section Line (between found corners)
- Projected Section Line
- - - Existing Claim Block Boundary
- Location Monument

NOTES

All monuments are 3" diameter PVC pipe labelled with aluminum tags.

TYPICAL CLAIMS



FILED AT THE REQUEST OF ECM, Inc.
 of Billings, MT., at 5:51 P.M. PER 4104
 RECORDS OF EUREKA COUNTY, NEVADA. M.L.R. REG. # 352,000
 FILE NO. 120967

GBW 1-4
GBW 6-77
GBW F1-F14
LODE MINING CLAIMS
 Sections 9, 16, 21, 22, 27, 28
 T22N, R49E MDM.
 Eureka County, NEVADA