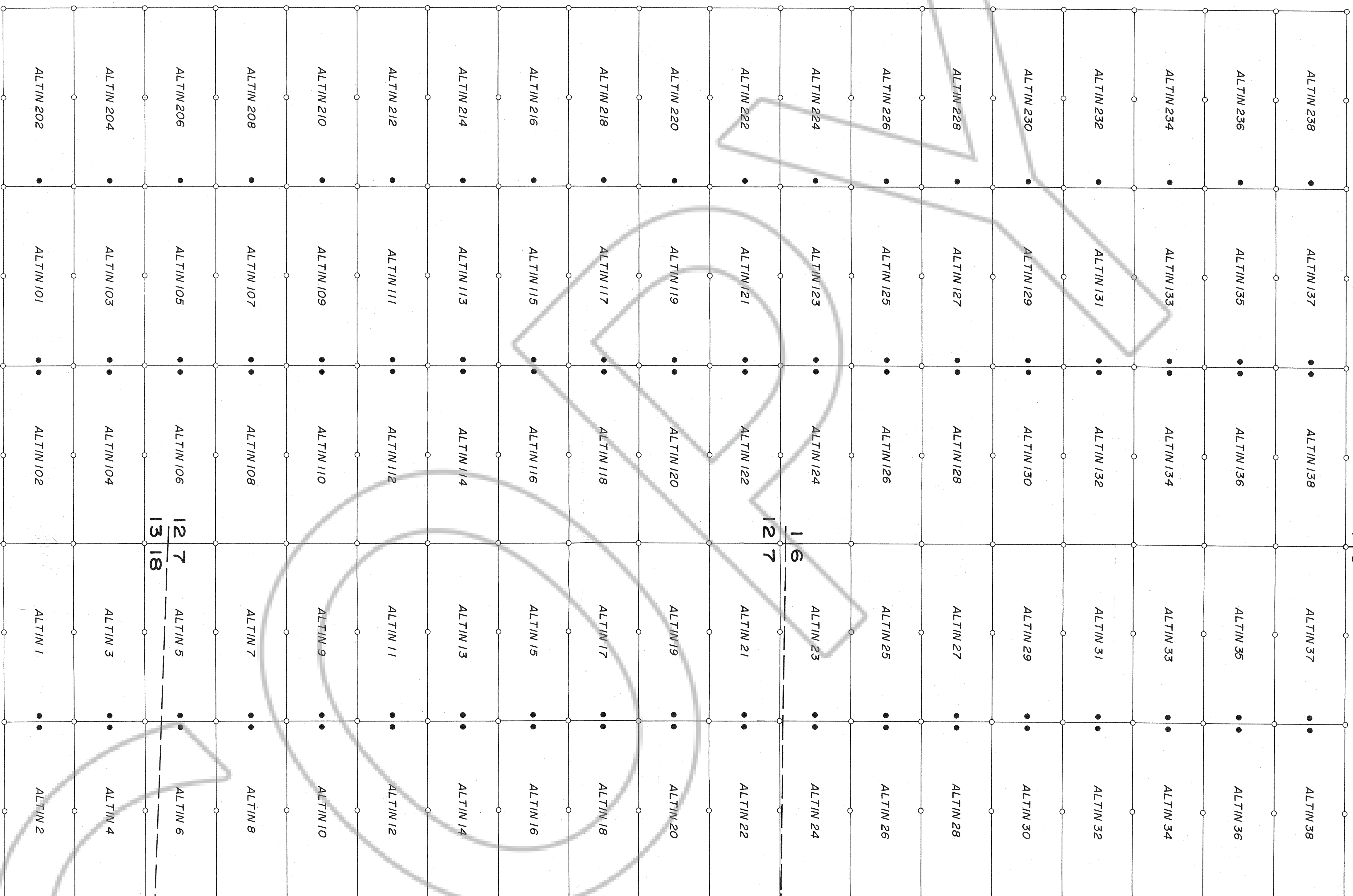


R52E R53E

T17N
T16N

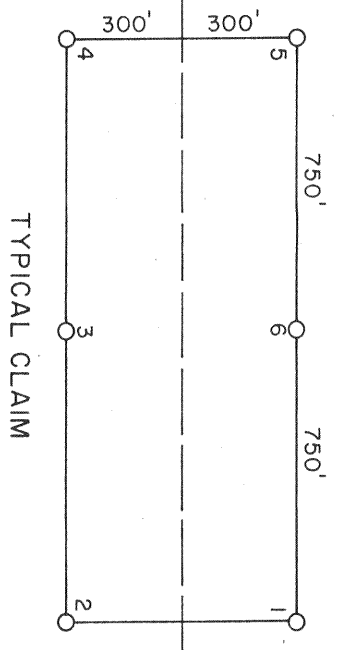
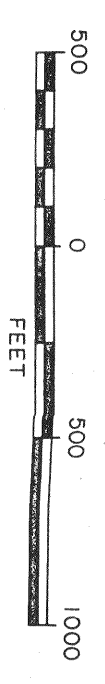
36 31
1 6



LOCATION DATES

July 6, 1988. Altin 1-23, 101-123 August 19, 1988. Altin 93-100, 389-414, 423-438
 July 7, 1988. Altin 24-38, 124-138 August 20, 1988. Altin 85-92, 285-300, 385-388
 July 30, 1988. Altin 202-238 August 21, 1988. Altin 186, 188, 190, 192, 194, 196, 198, 200
 NOTE: Location monuments are 10' from end line of claims.

SHEET 1 of 3



FILED BY THE REQUEST OF *Travis Minerals Company*
 on *Sept 18 19 88* at *2:22* mins, *PAST 2:00* P.M.
 REC'D at EUREKA COUNTY, NEVADA M.N. REBECCA L. GARDNER
 Fee \$ *350.00* File No. *121642*

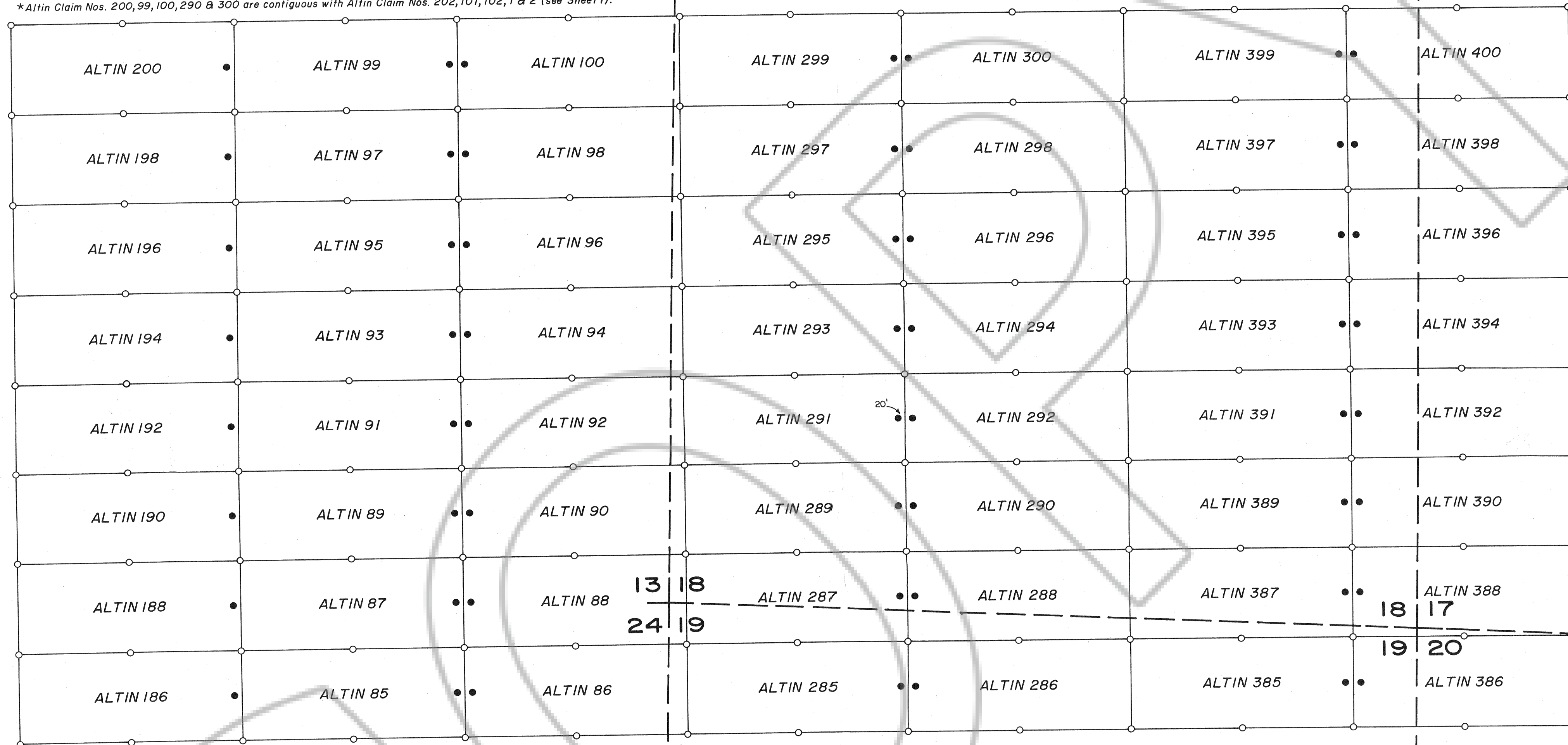
REVISIONS
 RESOURCE ASSOCIATES OF ALASKA, INC.
 8100 N.E. PARKWAY DR.
 VANCOUVER, WA 98662
 ALTIN LODGE CLAIMS
 T 16N, R 52 & 53 E
 EUREKA COUNTY, NEVADA
 SCALE: 1" = 500'
 DATA BY: G. ASH
 DRAFTED BY: RRP
 DATE: 7/88
 PLATE

R52E R53E

12 7
13 18

7 8
18 17

*Altin Claim Nos. 200, 99, 100, 290 & 300 are contiguous with Altin Claim Nos. 202, 101, 102, 1 & 2 (see Sheet 1).



T16N

13 18
24 19

18 17
19 20

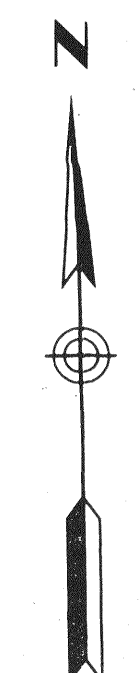
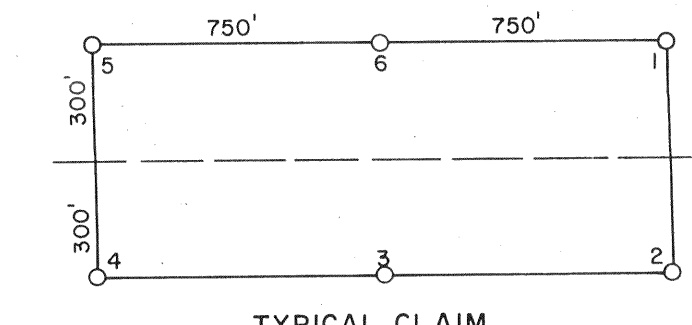
FILED AT THE REQUEST OF *Dennis M. Munn*
 on *Sept 16* 1988, at *24* mins, past *34* M.
 RECORDS OF EUREKA COUNTY, NEVADA M. N. REBEATH Recorder
 File No. **121642** Fee \$ *170.00*

SHEET 2 of 3

LOCATION DATES

- July 6, 1988: Altin 1-23, 101-123
- July 7, 1988: Altin 24-38, 124-138
- July 30, 1988: Altin 202-238
- August 19, 1988: Altin 93-100, 389-414, 423-438
- August 20, 1988: Altin 85-92, 285-300, 385-388
- August 21, 1988: Altin 186, 188, 190, 192, 194, 196, 198, 200

NOTE: Location monuments are 10' from end line of claims except as noted.



121642

RESOURCE ASSOCIATES OF ALASKA, INC.
 8100 N.E. Parkway Dr.
 Vancouver, WA 98662

ALTIN LODE CLAIMS
 T 16 N, R 52 & 53 E
 EUREKA COUNTY, NEVADA

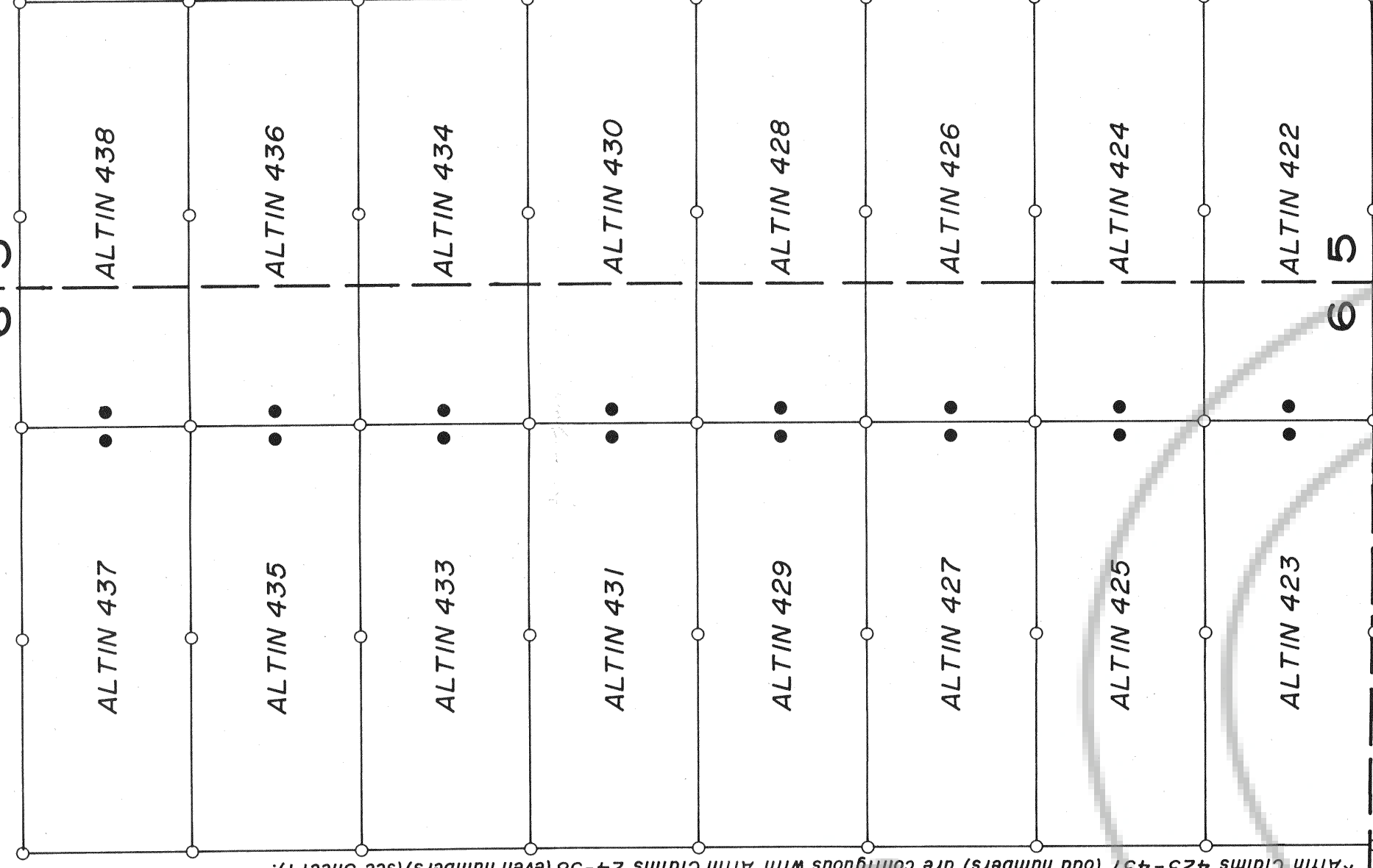
REVISIONS	
SCALE: 1" = 500'	DATA BY: G. ASH
DRAFTED BY: KRP	DATE: 9/1/88
PLATE	

R53E

T17N
T16N

31 32

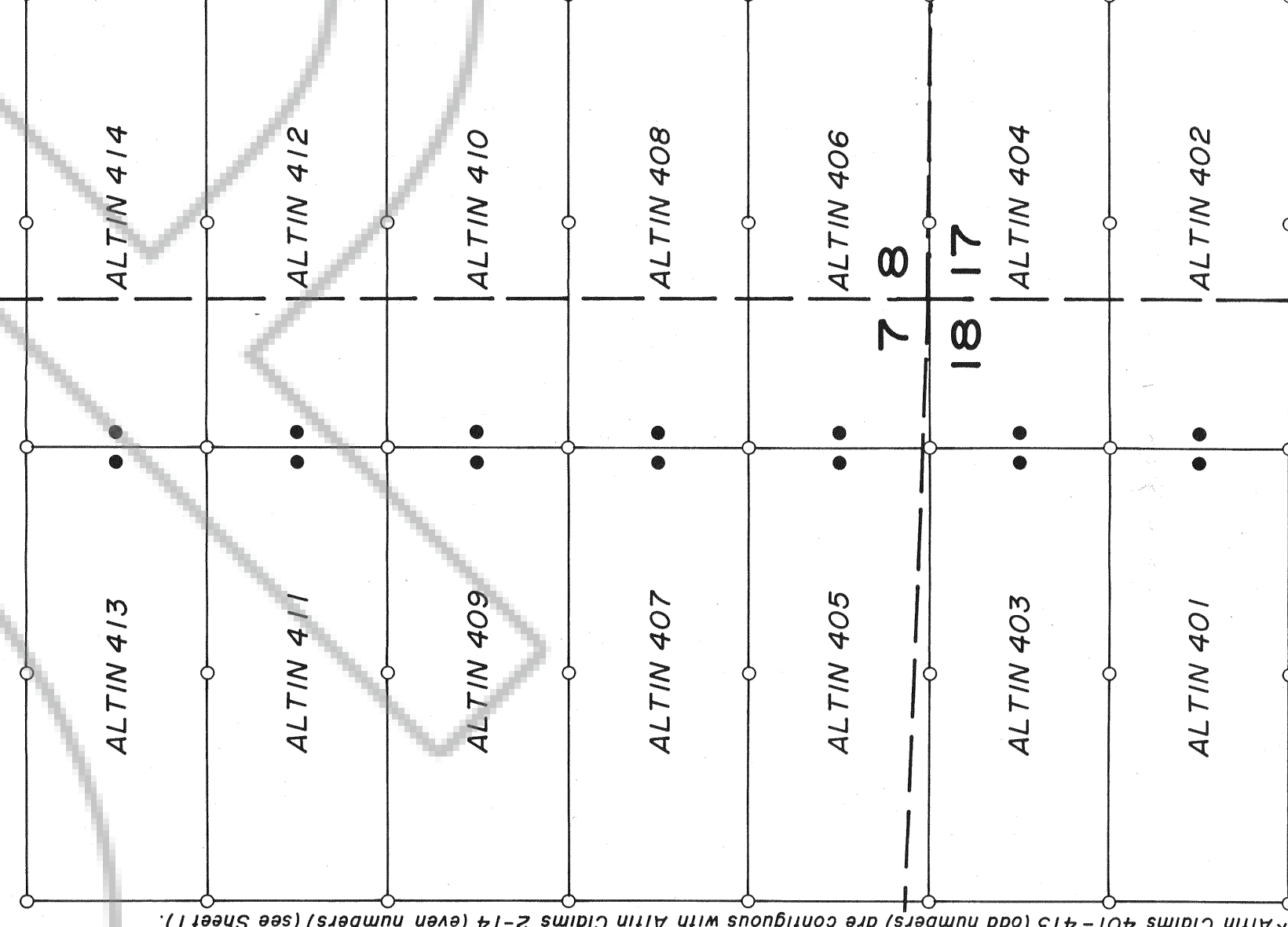
6 5



*Altin Claims 423-437 (odd numbers) are contiguous with Altin Claims 24-38 (even numbers) (see Sheet 1).

6 5

7 8



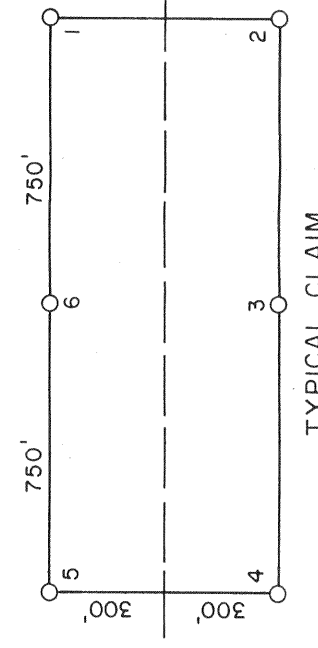
*Altin Claims 401-413 (odd numbers) are contiguous with Altin Claims 2-14 (even numbers) (see Sheet 1).

7 8

18 17

FILED AT THE REQUEST OF *Resource Associates of Alaska, Inc.*
on *Sept 16* 19 *88* at *3:30* mins, post *3:30* M.
RECORDS OF EUREKA COUNTY, NEVADA, M. N. REBELETTI, Recorder
File No. *5-21642* Fee \$ *637.50*

SHEET 3 of 3



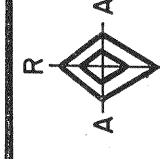
TYPICAL CLAIM

LOCATION DATES

- July 6, 1988: Altin 1-23, 101-123
- July 7, 1988: Altin 24-36, 124-138
- July 30, 1988: Altin 202-238
- August 19, 1988: Altin 93-100, 399-414, 423-438
- August 20, 1988: Altin 85-92, 285-300, 365-388
- August 21, 1988: Altin 166/168, 190, 192, 194, 196, 198, 200

NOTE: Location monuments are 10' from end line of claims except as noted.

121642



REVISIONS

SCALE: 1" = 300'

DATA BY: G. ASH

DRAFTED BY: KRP

DATE: 9/1/88

PLATE

RESOURCE ASSOCIATES OF ALASKA, INC.
8100 N.E. Parkway
Vancouver, WA 98662

ALTIN LODE CLAIMS
T 16 N, R 52 & 53 E
EUREKA COUNTY, NEVADA