

AFFIDAVIT OF PERFORMANCE OF LABOR

STATE OF UTAH)
) ss:
 COUNTY OF SALT LAKE)

121656

Before me, the subscribed, personally appeared Ronald Willden, whose address is 8750 Kings Hill Drive, Salt Lake City, Utah 84121, who being duly sworn, stated that at least EIGHTEEN THOUSAND TWO HUNDRED DOLLARS (\$18,200.00) worth of geophysical and geophysical surveying work was performed upon or for the benefit of all of the following described areas of 132 unpatented lode claims situated in Sections 1, 2, 11, 12, 13, 14, 15, 16, 17, 18, 19, 20, 21, 22, 23, 24, 25, 26, 27 N., Range 53 E., and sections 7, 13, 19, 20, 29, and 30, Township 27 N., Range 53 E., T33N27E, Eureka County, State of Nevada, to wit:

Five-O Numbers 1 through 11, BR Numbers 1 through 20, 22, 24, 25A through 42A, 43, 45, 47, 49A, 52A, 54A through 94A, 99A through 120A, 127 through 140, 143 through 176, and 299 through 272, more particularly described in Exhibit A, attached hereto and made a part hereof.

He further stated that such expenditure was made by John L. Carroll, owner of record of said claims, for the purpose of holding said claims for the assessment year that ends at noon September 1, 1983; that the foregoing work was performed during the periods April 16 to May 25, 1983, and June 28 to August 17, 1983; that he is the duly authorized representative of John L. Carroll, whose address is 515 Madison Ave., 32nd Floor, New York, N. Y. 10022; and that attached to this Affidavit is a copy of the Report of such work, as required by Title 30, United States Code, Section 23-1.

Signature of affiant

Ronald Willden
 Ronald Willden

Subscribed and sworn to before me this 7th day of September, 1983.

Carol B. Steyer
 Notary Public

SEAL
 Affixed

Notary Public in and for the State of Nevada

4-23-92

EXHIBIT A

The following described unpatented lode mining claims are located in sections 1, 2, 11, 12, 13, 14, 23, and 24, Township 27 N., Range 52 E., NDDM, in Eureka County, State of Nevada, and the location notices are filed in the Recorder's Office of said County and with the Nevada State Office of the U. S. Bureau of Land Management.

Five-O Group:

Five-O Numbers 1 through 14, recorded in the office of the Eureka County Recorder and assigned Eureka County File Number 91548 and assigned U. S. BLM Serial Numbers NMC 292941 through 292954.

BR Group:

CLAIM NAME AND NUMBER	RECORDING DATA		BLM SERIAL NUMBER
	BOOK	PAGE	
BR #3	120	514	NMC 296260
BR #4	120	515	NMC 296261
BR #5	120	516	NMC 296262
BR #6	120	517	NMC 296263
BR #7	120	518	NMC 296264
BR #8	120	519	NMC 296265
BR #9	120	520	NMC 296266
BR #10	120	521	NMC 296267
BR #11	120	522	NMC 296268
BR #12	120	523	NMC 296269
BR #13	120	524	NMC 296270
BR #14	120	525	NMC 296271
BR #15	120	526	NMC 296272
BR #16	120	527	NMC 296273
BR #17	120	528	NMC 296274
BR #18	120	529	NMC 296275
BR #19	120	530	NMC 296276
BR #20	120	531	NMC 296277
BR #22	120	532	NMC 296278
BR #24	120	533	NMC 296279
BR #25A	121	210	NMC 298494
BR #25A (AMENDED)	125	577	
BR #26A	121	211	NMC 298495
BR #26A (AMENDED)	125	578	
BR #27A	121	212	NMC 298496
BR #27A (AMENDED)	125	579	
BR #28A	121	213	NMC 298497
BR #28A (AMENDED)	125	580	
BR #29A	121	214	NMC 298498
BR #29A (AMENDED)	125	581	
BR #30A	121	215	NMC 298499
BR #30A (AMENDED)	125	582	
BR #31A	121	216	NMC 298500
BR #31A (AMENDED)	125	583	
BR #32A	121	217	NMC 298501
BR #32A (AMENDED)	125	584	
BR #33A	121	218	NMC 298502
BR #33A (AMENDED)	125	585	
BR #34A	121	219	NMC 298503
BR #34A (AMENDED)	125	586	
BR #35A	121	220	NMC 298504
BR #35A (AMENDED)	125	587	
BR #36A	121	221	NMC 298505
BR #36A (AMENDED)	125	588	
BR #37A	121	222	NMC 298506
BR #37A (AMENDED)	125	589	
BR #38A	121	223	NMC 298507
BR #38A (AMENDED)	125	590	
BR #39A	121	224	NMC 298508
BR #39A (AMENDED)	125	591	
BR #40A	121	225	NMC 298509
BR #40A (AMENDED)	125	592	

BR #41A	121	226	NMC 298510
BR #41A (AMENDED)	125	593	
BR #42A	121	227	NMC 298511
BR #42A (AMENDED)	125	594	
BR #43	120	552	NMC 296280
BR #45	120	553	NMC 296281
BR #47	121	228	NMC 298512
BR #49A	121	229	NMC 298513
BR #49A (AMENDED)	125	595	
BR #52A	121	230	NMC 298514
BR #52A (AMENDED)	125	596	
BR #54A	121	231	NMC 298515
BR #54A (AMENDED)	125	597	
BR #55A	121	232	NMC 298516
BR #55A (AMENDED)	125	598	
BR #56A	121	233	NMC 298517
BR #56A (AMENDED)	125	599	
BR #57A	121	234	NMC 298518
BR #57A (AMENDED)	125	600	
BR #58A	121	235	NMC 298519
BR #58A (AMENDED)	126	1	
BR #59A	121	236	NMC 298520
BR #59A (AMENDED)	126	2	
BR #60A	121	237	NMC 298521
BR #60A (AMENDED)	126	3	
BR #61A	121	238	NMC 298522
BR #61A (AMENDED)	126	4	
BR #62A	121	239	NMC 298523
BR #62A (AMENDED)	126	5	
BR #63A	121	240	NMC 298524
BR #63A (AMENDED)	126	6	
BR #64A	121	241	NMC 298525
BR #64A (AMENDED)	126	7	
BR #65A	121	242	NMC 298526
BR #65A (AMENDED)	126	8	
BR #66A	121	243	NMC 298527
BR #66A (AMENDED)	126	9	
BR #67A	121	244	NMC 298528
BR #67A (AMENDED)	126	10	
BR #68A	121	245	NMC 298529
BR #68A (AMENDED)	126	11	
BR #69A	121	246	NMC 298530
BR #69A (AMENDED)	126	12	
BR #70A	121	247	NMC 298531
BR #70A (AMENDED)	126	13	
BR #71A	121	248	NMC 298532
BR #71A (AMENDED)	126	14	
BR #72A	121	249	NMC 298533
BR #72A (AMENDED)	126	15	
BR #73A	121	250	NMC 298534
BR #73A (AMENDED)	126	16	
BR #74A	121	251	NMC 298535
BR #74A (AMENDED)	126	17	
BR #75A	121	252	NMC 298536
BR #75A (AMENDED)	126	18	
BR #76A	121	253	NMC 298537
BR #76A (AMENDED)	126	19	
BR #77A	121	254	NMC 298538
BR #77A (AMENDED)	126	20	
BR #78A	121	255	NMC 298539
BR #78A (AMENDED)	126	21	
BR #79A	121	256	NMC 298540
BR #79A (AMENDED)	126	22	
BR #80A	121	257	NMC 298541
BR #80A (AMENDED)	126	23	
BR #81A	121	258	NMC 298542
BR #81A (AMENDED)	126	24	
BR #82A	121	259	NMC 298543
BR #82A (AMENDED)	126	25	

BR #83A	121	260	NMC 298544
BR #83A (AMENDED)	126	26	
BR #84A	121	261	NMC 298545
BR #84A (AMENDED)	126	27	
BR #85A	121	262	NMC 298546
BR #85A (AMENDED)	126	28	
BR #86A	121	263	NMC 298547
BR #86A (AMENDED)	126	29	
BR #87A	121	264	NMC 298548
BR #87A (AMENDED)	126	30	
BR #88A	121	265	NMC 298549
BR #88A (AMENDED)	126	31	
BR #89A	121	266	NMC 298550
BR #89A (AMENDED)	126	32	
BR #90A	121	267	NMC 298551
BR #90A (AMENDED)	126	33	
BR #91A	121	268	NMC 298552
BR #91A (AMENDED)	126	34	
BR #92A	121	269	NMC 298553
BR #92A (AMENDED)	126	35	
BR #93A	121	270	NMC 298554
BR #93A (AMENDED)	126	36	
BR #94A	121	271	NMC 298555
BR #94A (AMENDED)	126	37	
BR #99A	121	272	NMC 298556
BR #99A (AMENDED)	126	38	
BR #100A	121	273	NMC 298557
BR #100A (AMENDED)	126	39	
BR #101A	121	274	NMC 298558
BR #101A (AMENDED)	126	40	
BR #102A	121	275	NMC 298559
BR #102A (AMENDED)	126	41	
BR #103A	121	276	NMC 298560
BR #103A (AMENDED)	126	42	
BR #104A	121	277	NMC 298561
BR #104A (AMENDED)	126	43	
BR #105A	121	278	NMC 298562
BR #105A (AMENDED)	126	44	
BR #106A	121	279	NMC 298563
BR #106A (AMENDED)	126	45	
BR #107A	121	280	NMC 298564
BR #107A (AMENDED)	126	46	
BR #108A	121	281	NMC 298565
BR #108A (AMENDED)	126	47	
BR #109A	121	282	NMC 298566
BR #109A (AMENDED)	126	48	
BR #110A	121	283	NMC 298567
BR #110A (AMENDED)	126	49	
BR #111A	121	284	NMC 298568
BR #111A (AMENDED)	126	50	
BR #112A	121	285	NMC 298569
BR #112A (AMENDED)	126	51	
BR #113A	121	286	NMC 298570
BR #113A (AMENDED)	126	52	
BR #114A	121	287	NMC 298571
BR #114A (AMENDED)	126	53	
BR #115A	121	288	NMC 298572
BR #115A (AMENDED)	126	54	
BR #116A	121	289	NMC 298573
BR #116A (AMENDED)	126	55	
BR #117A	121	290	NMC 298574
BR #117A (AMENDED)	126	56	
BR #118A	121	291	NMC 298575
BR #118A (AMENDED)	126	57	
BR #119A	121	292	NMC 298576
BR #119A (AMENDED)	126	58	
BR #120A	121	293	NMC 298577
BR #120A (AMENDED)	126	59	
BR #127	121	19	NMC 296282

BR #128	121	20	NMC 296283
BR #129	121	21	NMC 296284
BR #130	121	22	NMC 296285
BR #131	121	23	NMC 296286
BR #132	121	24	NMC 296287
BR #133	121	25	NMC 296288
BR #134	121	26	NMC 296289
BR #135	121	27	NMC 296290
BR #136	121	28	NMC 296291
BR #137	121	29	NMC 296292
BR #138	121	30	NMC 296293
BR #139	121	31	NMC 296294
BR #140	121	32	NMC 296295
BR #143	121	33	NMC 296296
BR #144	121	34	NMC 296297
BR #145	121	35	NMC 296298
BR #146	121	36	NMC 296299
BR #147	121	37	NMC 296300
BR #148	121	38	NMC 296301
BR #149	121	39	NMC 296302
BR #150	121	40	NMC 296303
BR #151	121	41	NMC 296304
BR #152	121	42	NMC 296305
BR #153	121	43	NMC 296306
BR #154	121	44	NMC 296307
BR #155	121	45	NMC 296308
BR #156	121	46	NMC 296309
BR #157	121	47	NMC 296310
BR #158	121	48	NMC 296311
BR #159	121	49	NMC 296312
BR #160	121	50	NMC 296313
BR #161	121	51	NMC 296314
BR #162	121	52	NMC 296315
BR #163	121	53	NMC 296316
BR #164	121	54	NMC 296317
BR #165	121	55	NMC 296318
BR #166	121	56	NMC 296319
BR #167	121	57	NMC 296320
BR #168	121	58	NMC 296321
BR #169	121	59	NMC 296322
BR #170	121	60	NMC 296323
BR #171	121	61	NMC 296324
BR #172	121	62	NMC 296325
BR #173	121	63	NMC 296326
BR #174	121	64	NMC 296327
BR #175	121	65	NMC 296328
BR #176	121	66	NMC 296329
BR #259	121	67	NMC 296330
BR #260	121	68	NMC 296331
BR #261	121	69	NMC 296332
BR #262	121	70	NMC 296333
BR #263	121	71	NMC 296334
BR #264	121	72	NMC 296335
BR #265	121	73	NMC 296336
BR #266	121	74	NMC 296337
BR #267	121	75	NMC 296338
BR #268	121	76	NMC 296339
BR #269	121	77	NMC 296340
BR #270	121	78	NMC 296341
BR #271	121	79	NMC 296342
BR #272	121	80	NMC 296343
BR # 26A (Relocated)	149	146	NMC 379854
BR # 28A (Relocated)	149	147	NMC 379855
BR # 30A (Relocated)	149	148	NMC 379856
BR # 32A (Relocated)	149	149	NMC 379857
BR # 34A (Relocated)	149	150	NMC 379858
BR # 36A (Relocated)	149	151	NMC 379859
BR # 38A (Relocated)	149	152	NMC 379860
BR # 40A (Relocated)	149	153	NMC 379861
BR # 42A (Relocated)	149	154	NMC 379862

SUMMARY REPORT

September 6, 1968

This detailed report is filed in compliance with the requirements of Title 20, United States Code, Section 23-1, for a group of 132 contiguous lode mining claims known as the Five-O group and the BR group and more particularly described in Exhibit A attached to the Affidavit to which this Report is also attached, and shown on the Plan Map attached hereto and made a part hereof.

The assessment work consisted of geochemical and geophysical surveys of portions of the claim block where soil cover precluded sampling bedrock, and where geologic relations suggested that mineral deposits might be found at depth in favorable rock units. The geochemical sampling was done by a crew of technicians supplied by Free Lance Geology, Inc., Salt Lake City, Utah, and by the undersigned, and the geophysical surveying was done by High Country Geophysical Associates, Inc., Bailey, Colorado. The undersigned designed the surveys and supervised them, and is qualified to do so by virtue of BS and MS degrees in Mineralogy, a PhD degree in geology and more than 36 years experience in such surveying work and the supervision of such work. The cost of this surveying work exceeded \$18,200.00.

The geochemical surveying consisted of collecting 1 to 2 pound samples of big sage (*Artemisia tridentata*) at 300 ft intervals on traverse lines spaced 1000 ft apart all along the eastern boundary of the claim group and extending eastward into Elko County where similar conditions existed on contiguous BR claims. Soil samples were also collected over portions of the survey grid where such samples had not previously been taken. The plant samples were sent to Bondar-Clegg, Inc., Sparks, Nevada, for preparation and analysis for gold from the ashed plant material.

The soils were sent to Rocky Mountain Geochemical Corp., Midvale, Utah, for analysis for gold, arsenic, antimony, and mercury. The plant sampling identified several areas where gold was anomalous over two or more adjacent traverse lines and these areas were later selected for follow-up geophysical surveying or detailed plant sampling. The one area selected for detailed plant sampling was sampled on a 300 ft by 300 ft grid and these samples were sent to Bondar-Clegg for Ind. Neutron Activation Analysis for gold and 17 other elements.

(GDD) in plant ash varied from non-detectable to a high of 240 parts per billion (ppb). Gold was not detected in any of the soil samples even in places where the plants were clearly anomalous in gold. It is believed that these results demonstrate the efficacy of plant sampling to detect buried mineralization, but until these anomalous areas are tested by drilling this conclusion will remain unproven.

There is no clear correlation of the indicator elements--arsenic, antimony, or mercury--with the anomalous plant samples.

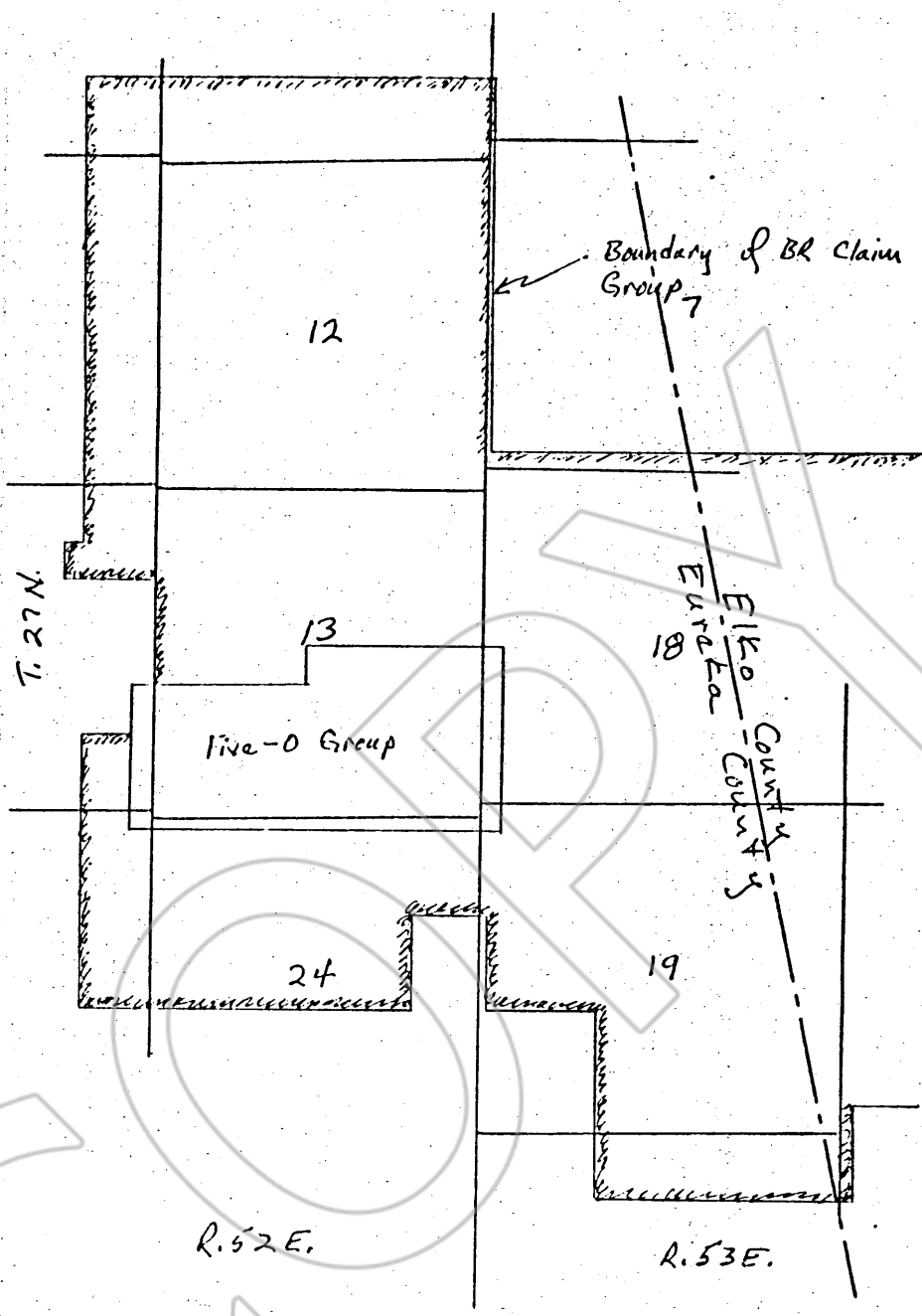
The gold-bearing areas selected for follow-up geophysical surveying were surveyed using Audio-magnetotelluric traversing techniques, wherein natural earth currents caused by electrical storms are measured by paired electrodes to determine the resistivity of various layers in the near-surface environment. The telluric traversing identified possible fault zones adjacent to most of the linear gold anomalies identified by the plant sampling. These possible fault zones adjacent to anomalous plant samples are thought to be attractive targets for drill testing for gold ore bodies.

Detailed maps and other technical data incorporating the results of this survey are in the possession of the undersigned, who maintains offices at 10 Oak St., Number 8, Midvale, Utah 84047.

Respectfully submitted,

Ronald W. Willden

Ronald Willden
Exploration Geologist



Plan map showing location of Five-0 claim group and boundary of RR claim group within Eureka County. Surveyed area lies along Eureka County-Elko County boundary and extends into both counties.

OFFICIAL RECORDS
 EUREKA COUNTY, N. DAKOTA
 MIN. REGR. F. & L. BINDER
 FILE NO. 121656 3852

BOOK 184 PAGE 369

RECORDED AT THE REQUEST OF
 BOOK 184 PAGE 369
 Ronald Wilder
 88 SEP 19 P242