

TYPICAL CLAIMS
ALL CLAIMS ARE 1500' x 600'

EXPLANATION

- CLAIM BOUNDARY
- LOCATION MONUMENT
- ⊕ SECTION CORNER

LOCATOR:

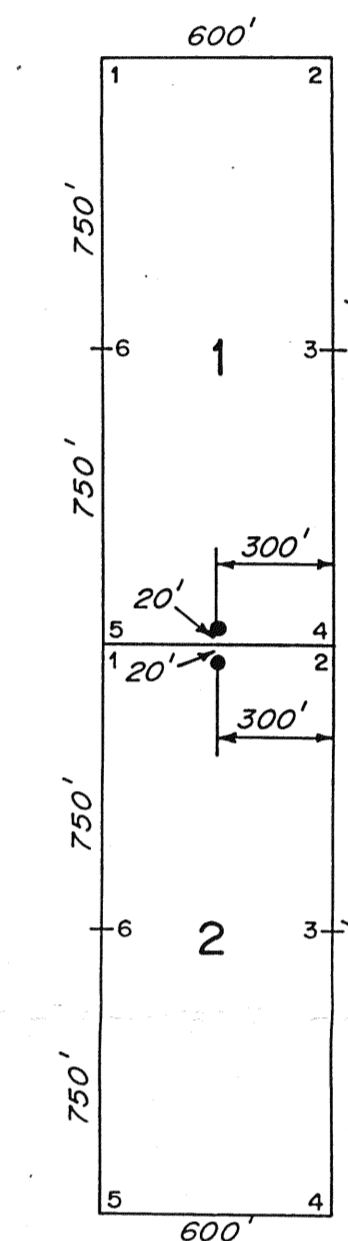
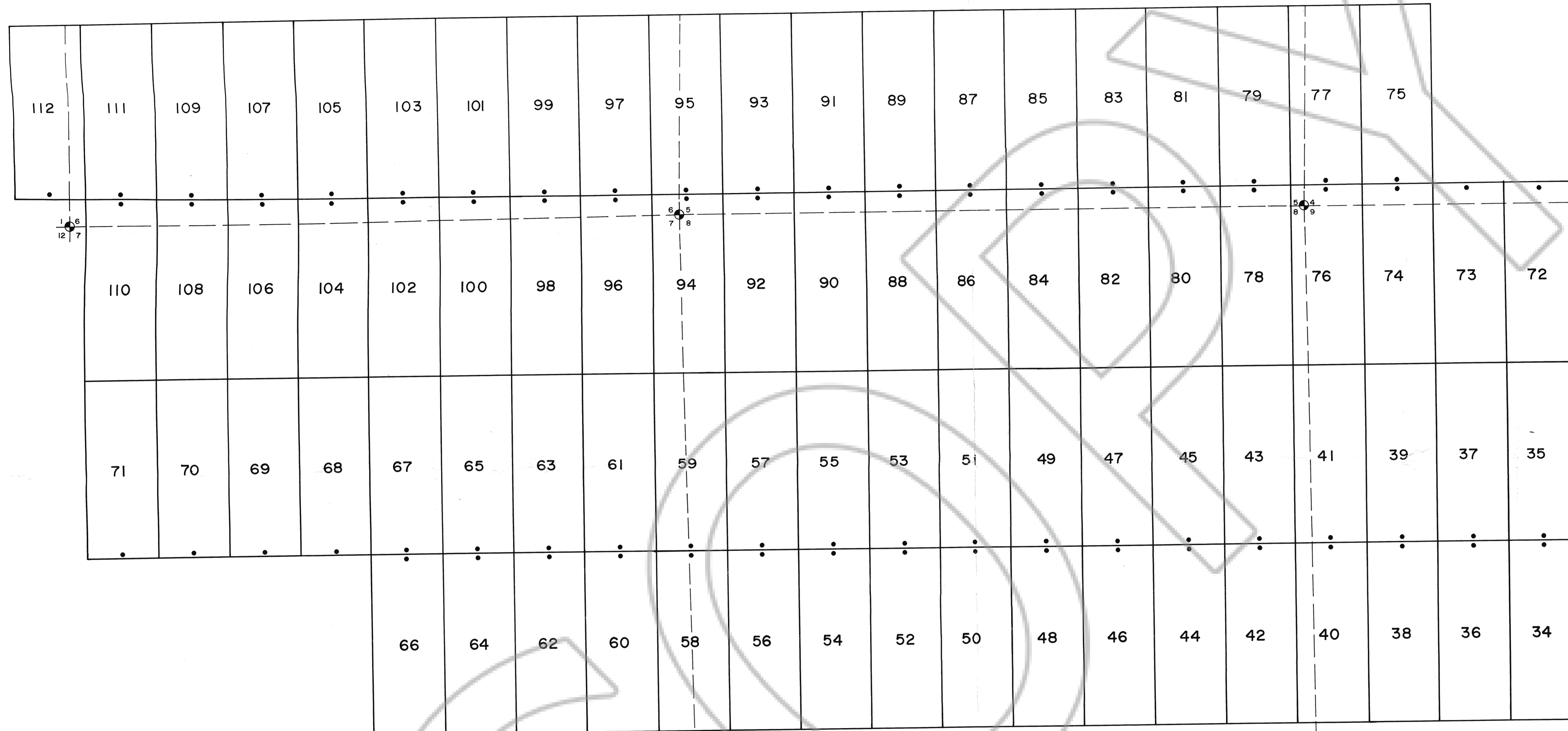
ECM, Inc.
2720 3rd Avenue North
Suite 450
Billings, Mt. 59101

FILED AT THE REQUEST OF ECM Incorporated
on Oct 12 1988 at 5:28 mins, past 8:30 A.M.
RECORDS OF EUREKA COUNTY, NEVADA M. H. REAL ESTATE DEPARTMENT
File No. 122867 Fee \$ 1.80

MINING CLAIM LOCATION MAP
GBN CLAIMS 113-184

T 22 & 23 N, R 48 & 49 E
Eureka County, Nevada

ECM, Inc.



TYPICAL CLAIMS
ALL CLAIMS ARE 1500' x 600'

EXPLANATION

- CLAIM BOUNDARY
- LOCATION MONUMENT
- ⊕ SECTION CORNER

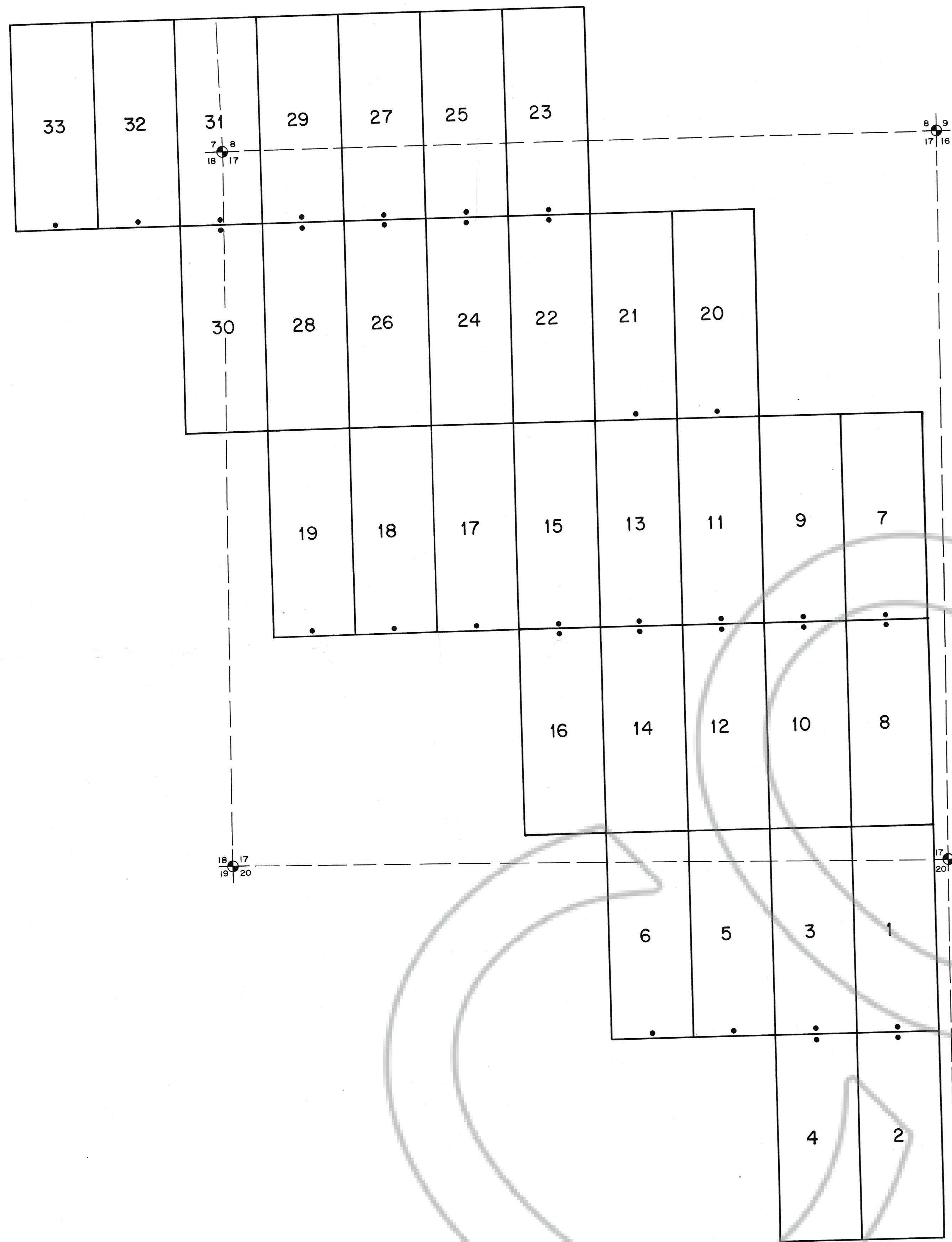
LOCATOR:
ECM, Inc.
2720 3rd Avenue North
Suite 450
Billings, Mt. 59101

FILED AT THE REQUEST OF ECM Incorporated
on Oct 12 1988, at 52 mins, East 82 M,
RECORDS OF EUREKA COUNTY, NEVADA M. N. REBALFATI, Recorder
File No. 122867 Fee \$ 1185.00

MINING CLAIM LOCATION MAP
GBN CLAIMS 34-112

T22 N, R 48 & 49 E
Eureka County, Nevada

ECM, Inc.

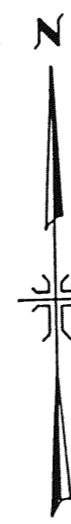


EXPLANATION

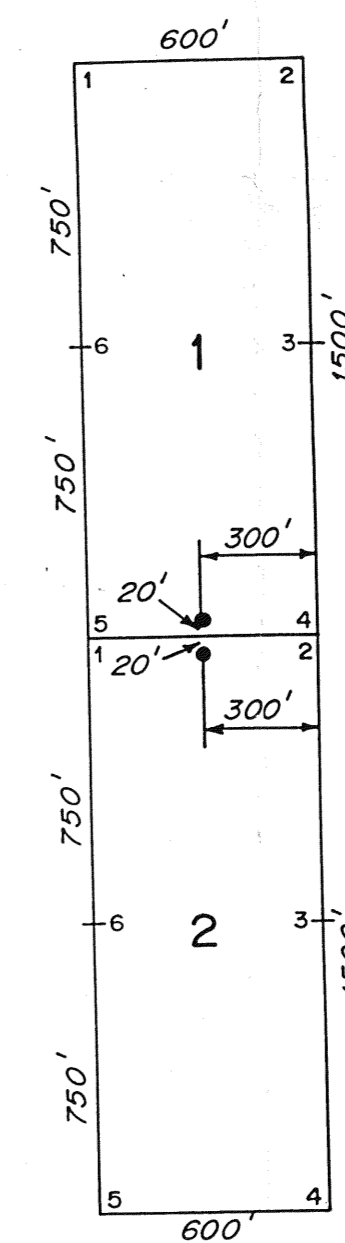
- CLAIM BOUNDARY
- LOCATION MONUMENT
- ⊕ SECTION CORNER

LOCATOR

ECM, Inc.
2720 3rd Avenue North
Suite 450
Billings, Mt. 59101



SCALE: 1" = 500'



TYPICAL CLAIMS

ALL CLAIMS ARE 1500' x 600'

FILED AT THE REQUEST OF *ECM, Incorporated*
on *Oct 12* 19 *88*, at *52* mins. past *8* A.M.
RECORDS OF EUREKA COUNTY, NEVADA M. N. REBALEATI, Recorder
File No. *122867* Fee \$ *495.00*

MINING CLAIM LOCATION MAP
GBN CLAIMS 1-33

T 22 N, R 49 E
Eureka County, Nevada

ECM, Inc.