

T.
20
N.

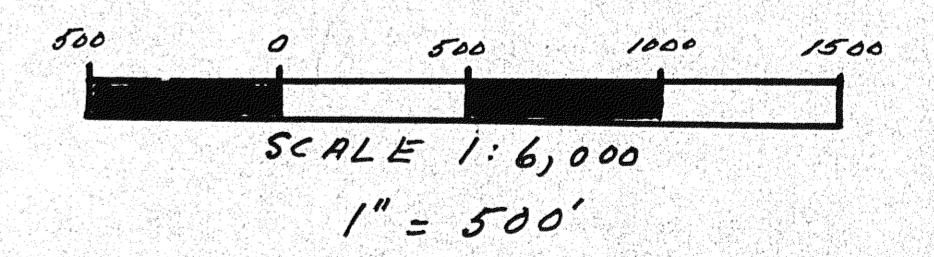


T. 20 N., R. 52 E.
M. D. B. & M

NOTES:

1. All claims of ANCHOR 81 through 140 are 1500' by 600'
2. There is a total of 60 claims.
3. Discovery Monuments designated by "o" are 50' from end lines except for claims #139 and #140. Discovery Monuments for these two claims are 50' from the East Side Center Lines.
4. "o" designate corner and side center posts which are 5' x 3 1/4" PVC plastic pipes.
5. All posts are marked with aluminum tags.
6. Discovery monuments were located on the following dates:

Anchor Nos. 81-123	1 September 1988
Anchor Nos. 124-125	12 September 1988
Anchor Nos. 126-131	3 September 1988
Anchor Nos. 132-137	4 September 1988
Anchor Nos. 138-	10 September 1988
Anchor Nos. 139-140	13 September 1988
7. All staking was completed and posts in place by 17 September 1988
8. Tie Point is El. 6424.7' at "Y" fork in dirt roads. This point is established on U.S.G.S. DEVON PEAK QUADRANGLE MAP in The NE 1/4, NW 1/4, sec. 9, T. 20 N., R. 52 E.
9. Sections 9, 10, 3, & 4 are unsurveyed



FILED AT THE REQUEST OF John E. Welsh
 on Oct 16 1988 at 4 mins, past 12 M.
 RECORDS OF EUREKA COUNTY, NEVADA M. N. REBELETT, Recorder
 File No. EC-3214 Fee \$ 540.00

MAP 1 of 2

ANCHOR LODE MINING CLAIMS
 in
 sec. 3, 4, 9, 10
 T. 20 N., R. 52 E., M. D. B. & M.
 EUREKA COUNTY, NEVADA

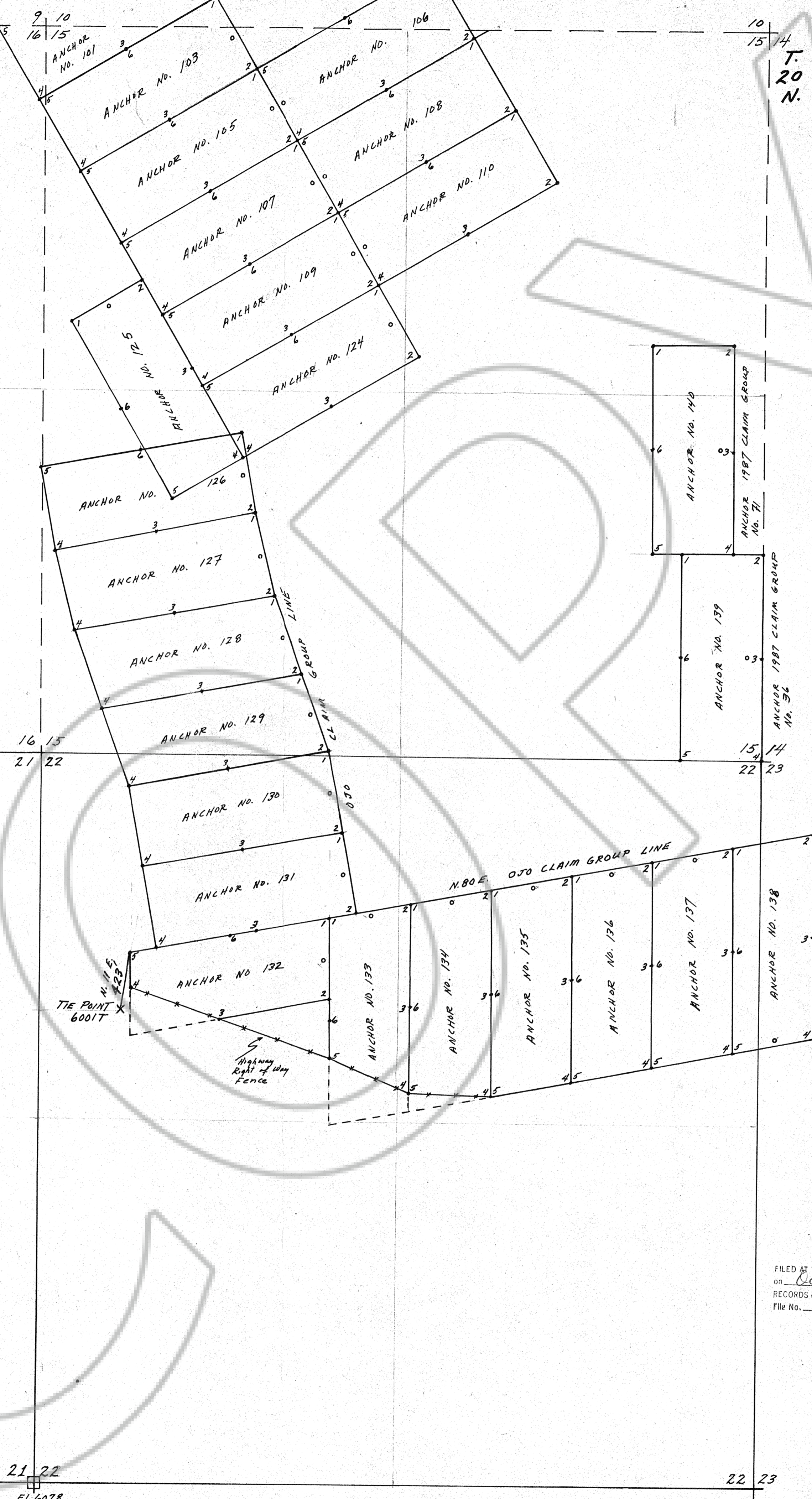
123214

John E. Welsh,
 Geologist
 20 September 1988

4780 Bonair Street
 Holladay UT 84117
 801-278-6657

R. 52 E.

9
16
16
21
21
21

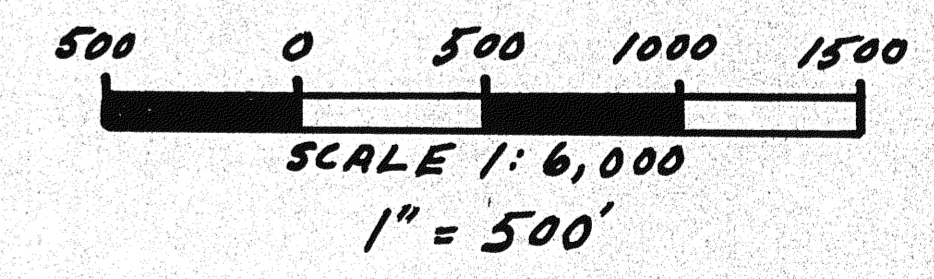


T. 20 N., R. 52 E.
M. D. B. & M.

NOTES:

1. All Claims of ANCHOR 81 through 140 are 1500' by 600'.
2. There are a total of 60 claims.
3. Discovery Monuments designated by "o" are 50' from end lines except for claims # 137 and # 140. Discovery Monuments for these two claims are 50' from the East Side Center Lines.
4. "o" designate corner and side center posts which are 5' x 3/4" PVC plastic pipes.
5. All posts are marked with aluminum tags.
6. Discovery Monuments were located on the following dates:

Anchor Nos 81-123	1 September 1988
Anchor Nos 124-125	12 September 1988
Anchor Nos 126-131	3 September 1988
Anchor Nos 132-137	4 September 1988
Anchor Nos 138-	10 September 1988
Anchor Nos 139-140	17 September 1988
7. All staking was completed and posts in place by 17 September 1988.
8. Tie Point is El. 6001 T. at dirt road junction with U.S. highway 50-6. This point is established on the U.S. G.S. DEVON PEAK QUADRANGLE map in the SW 1/4, NW 1/4 sec. 22, T. 20 N., R. 52 E.
9. Sections 15 & 16 are unsurveyed.
10. Section Corners were not located.



FILED AT THE REQUEST OF John E. Welsh
 on Oct 18 1988 at 4 mins. past 10 A.M.
 RECORDS OF EUREKA COUNTY, NEVADA M. N. REBELETTI, Recorder
 File No. 123214 Fee \$ 360.00

MAP 2-42
ANCHOR LODGE MINING CLAIMS
 in
 sec. 15, 16, 21, 22
 T. 20 N., R. 52 E., M. D. B. & M.
 EUREKA COUNTY NEVADA

John E. Welsh, Geologist
 4780 Bonair Street
 Holladay Ut. 84117
 20 September 1988
 801-278-6657

123214

EL. 6078
 SECTION CORNER
 1954 MAP Whittier Mountain 15'
 QUADRANGLE U.S.G.S.

R. 52 E.