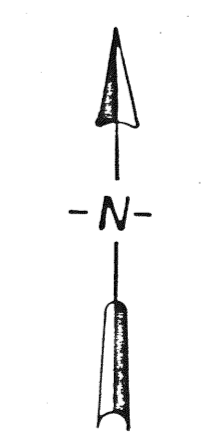
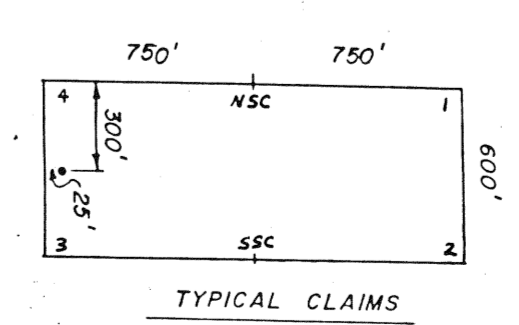


91•	70••69
92•	72••71
93•	74••73
94•	76••75
95•	78••77
96•	80••79
97•	82••81

54••53	56••55	58••57	60••59
--------	--------	--------	--------

38••37	40••39	42••41	44••43
--------	--------	--------	--------

1••2	3••4	5••6	7••8	9••10	11••12	13••14	15••16	17••18	19••20	21••22	23••24	25••26	27••28
389A	387A	385	383	381	379								
347	345	343	341	339	337								
346	344	342	340	338	336								



FILED AT THE REQUEST OF *ECM Inc*
on Oct 19 1988, at 6 mins. past 4p M.
RECORDS OF EUREKA COUNTY, NEVADA M. N. REBALEAT, Recorder
File No. 123519 Fee \$ 1470.00

123519

NESSA CLAIMS EUREKA COUNTY, NEVADA	
ECM INC. 2720 3RD AVENUE NORTH BILLINGS, MONTANA 59105	
SCALE: 1 inch = 500 feet	SHEET 1 of 4

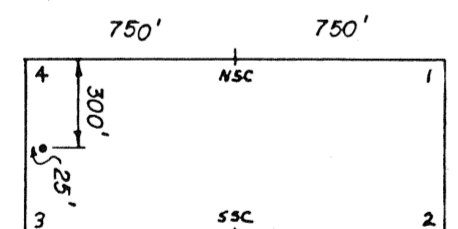
		Match Line		Sheet 1				Match Line Sheet 4	
98	84 • 83	62 • 61		46 • 45		29 • 30		112 • 113	
99	86 • 85	64 • 63		48 • 47		31 • 32		114 • 115	
100	88 • 87	66 • 65		50 • 49		33 • 34		116 • 117	
101	90 • 89	68 • 67		52 • 51		35 • 36		118 • 119	
		224 • 225		198 • 199		172 • 173		120 • 121	
		226 • 227		200 • 201		174 • 175		122 • 123	
		228 • 229		202 • 203		176 • 177		124 • 125	
		230 • 231		204 • 205		178 • 179		126 • 127	
		232 • 233		206 • 207		180 • 181		128 • 129	
		234 • 235		208 • 209		182 • 183		130 • 131	
		236 • 237		210 • 211		184 • 185		132 • 133	
		238 • 239		212 • 213		186 • 187		134 • 135	
		240 • 241		214 • 215		188 • 189		136 • 137	
		416 • 415		216 • 217		190 • 191		138 • 139	
		418 • 417		218 • 219		192 • 193		140 • 141	
		420 • 419		220 • 221		194 • 195		142 • 143	
		422 • 421		222 • 223		196 • 197		144 • 145	

9 10
16 15

10 11
15 14

11 12
14 13

T
21
N



TYPICAL CLAIMS
ALL CLAIMS 1500' x 600'
ALL POSTS ARE PVC

FILED AT THE REQUEST OF ECM Inc
on Oct 19 19 22 at 6 mins past 12 M.
RECORDS OF EUREKA COUNTY, NEVADA M. N. REBALEATI, Recorder
File No. 123519 Fee \$ 2220.00

NESSA CLAIMS
EUREKA COUNTY, NEVADA

ECM INC.
2720 3RD AVENUE NORTH
BILLINGS, MONTANA 59105

SCALE: 1 inch = 500 feet

SHEET 2 of 4

123519

R 50 E

Match Line Sheet 4

519•	
521•	
523•	
146• • 147	
12 7 13 18	
148• • 149	
150• • 151	
152• • 153	
154• • 155	
156• • 157	
158• • 159	
160• • 161	
162• • 163	
164• • 165	
13 18	
24 19	
166• • 167	
168• • 169	
170• • 171	

Match Line Sheet 2

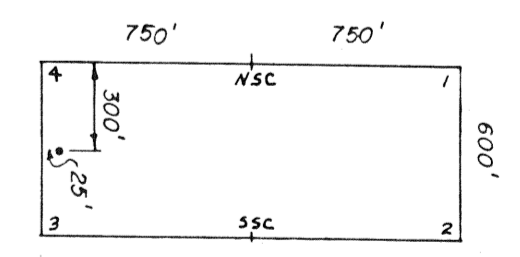
T 21 N

R 50 E

R 51 E

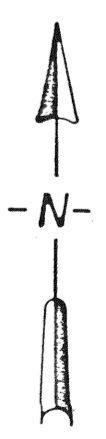
7 8
18 17

18 17
19 20



TYPICAL CLAIMS

ALL CLAIMS 1500' x 600'
 FILED AT THE RECORDER'S OFFICE, P.O. BOX 1009,
 BILLINGS, MONTANA 59105, ON Oct 19 1981, at 8 mins, past 12 M.
 RECORDS OF EUREKA COUNTY, NEVADA M. N. REBALEATI, Recorder
 File No. 123519 Fee \$ 435.00



NESSA CLAIMS
 EUREKA COUNTY, NEVADA

ECM INC.
 2720 3RD AVENUE NORTH
 BILLINGS, MONTANA 59105

123519

SCALE: 1inch = 500feet

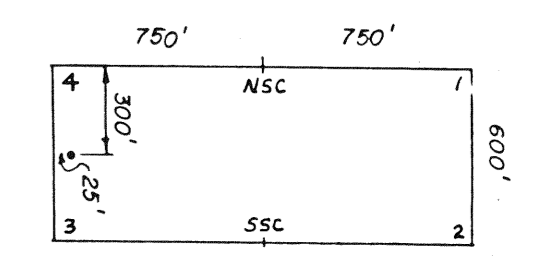
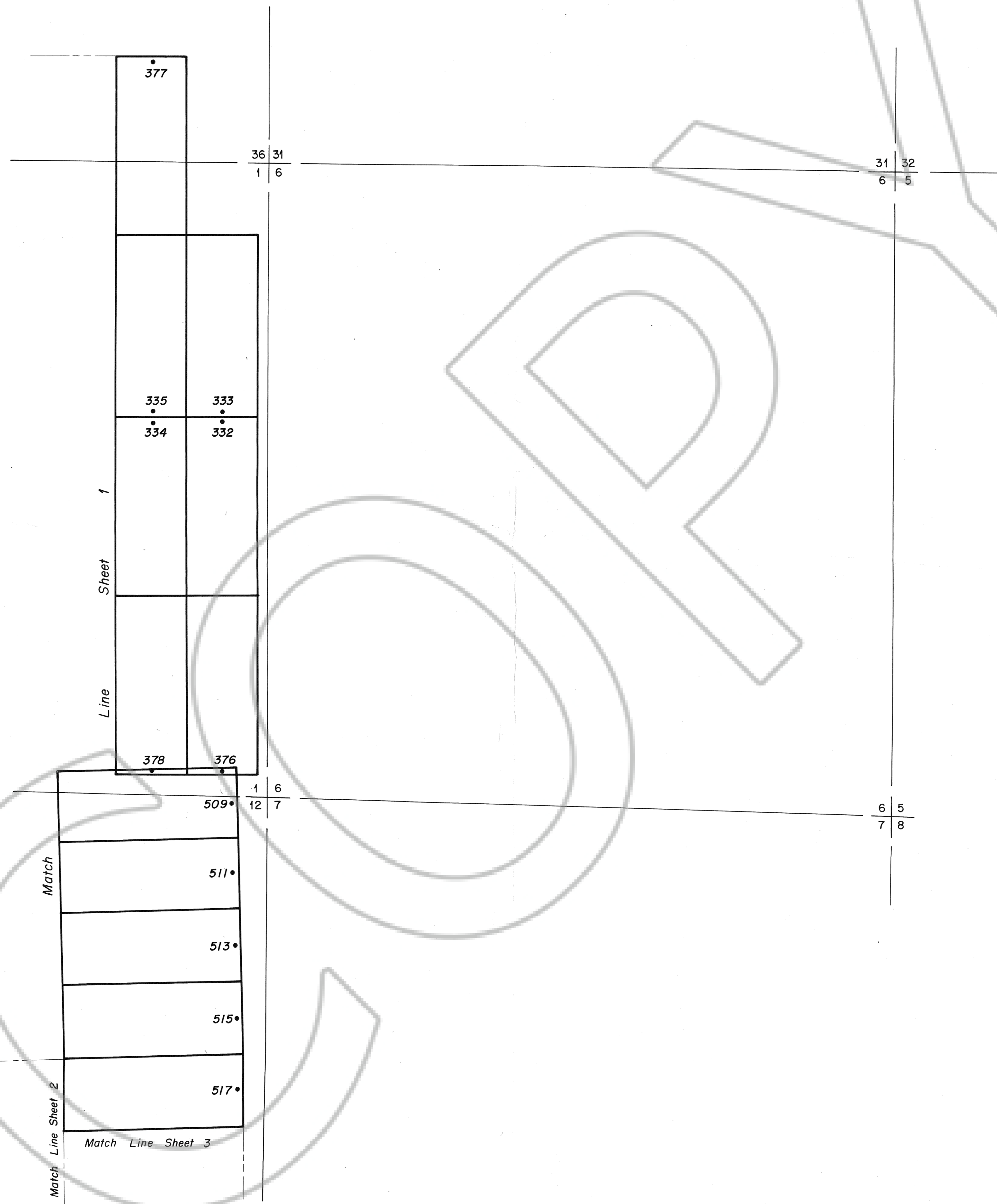
SHEET 3 of 4

T
22
N

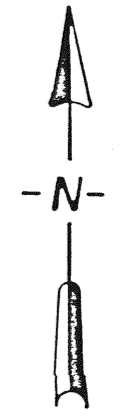
T
21
N

R 50 E

R 51 E



TYPICAL CLAIMS
 ALL CLAIMS 1500' x 600'
 ALL POSTS ARE PVC



PREPARED AT THE REQUEST OF ECM Inc.
 ON Oct. 19 1988 AT 6 min, past 12 M.
 REGISTERED IN EUREKA COUNTY, NEVADA BY R. N. REBALEATI, Recorder
 The No. 123519 Fee \$ 100.00

NESSA CLAIMS
 EUREKA COUNTY, NEVADA

ECM INC.
 2720 3RD AVENUE NORTH
 BILLINGS, MONTANA 59105

SCALE: 1 inch = 500 feet SHEET 4 of 4

123519