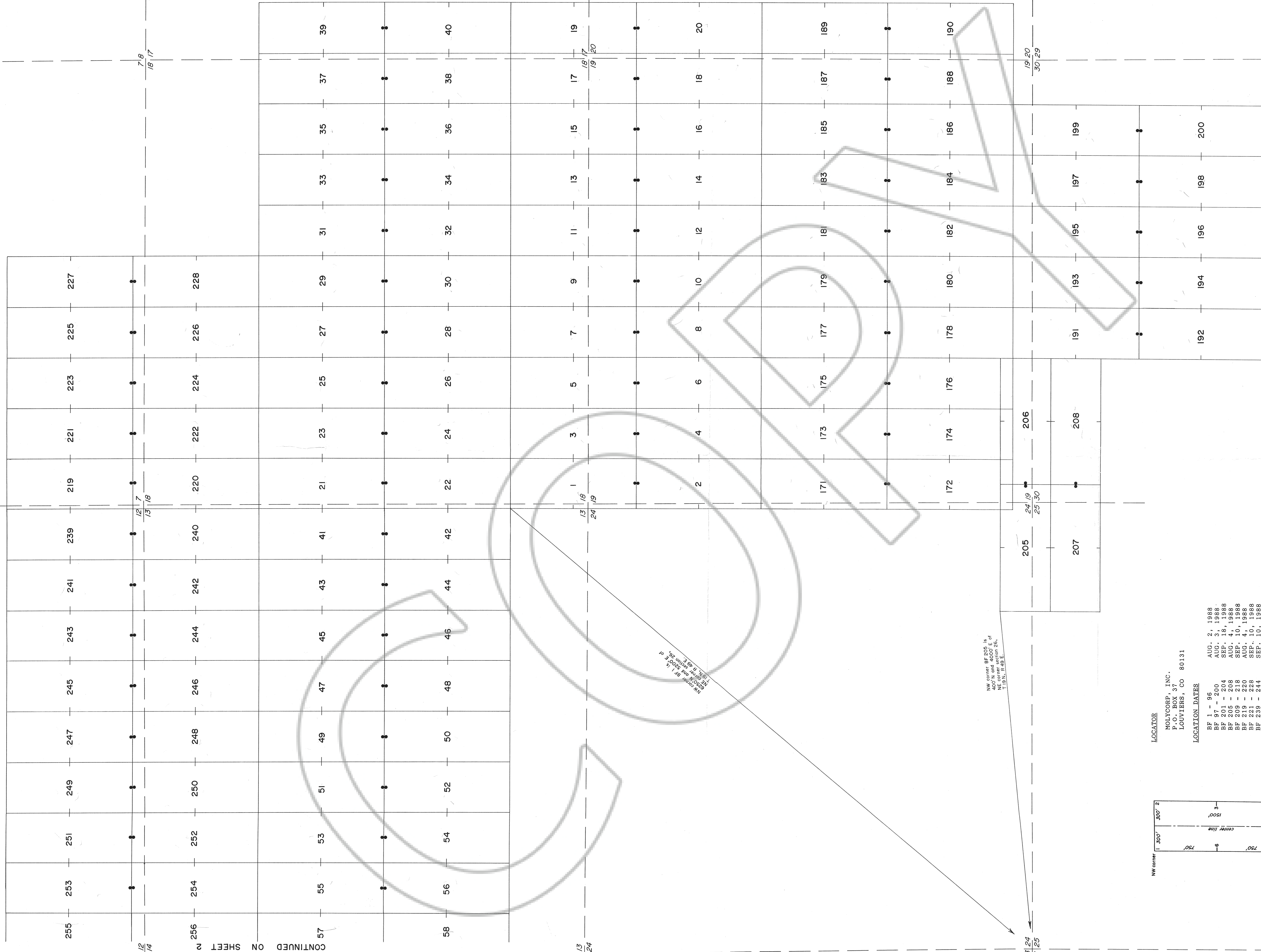


R 49 E R 50 E



11/12
13/14

14/13
23/24

26/25

7/8
18/17

12/7
13/18

14/13
23/24

13/16
24/19

19/17
19/20

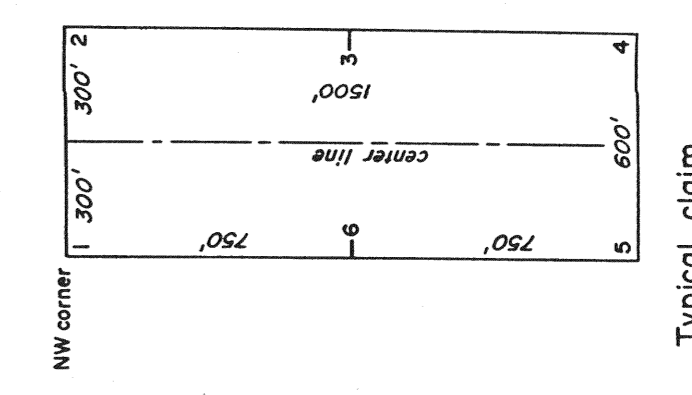
23/24
26/25

205
24/19
25/30

19/20
30/29

NW corner BF 205 is 400' N and 4000' E of NE corner of T19N, R49E.

NW corner BF 191 is 15' from center of BF 192 and 15' from center of BF 193.



Typical claim

LOCATOR
MOLYCORP, INC.
P.O. BOX 37
LOUVIERS, CO 80131

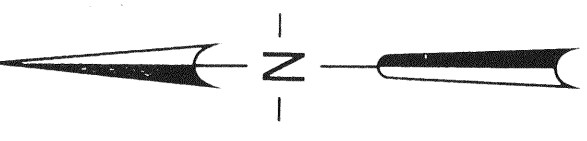
LOCATION DATES

- BF 1 - 96
- BF 97 - 200
- BF 201 - 204
- BF 205 - 208
- BF 209 - 218
- BF 219 - 220
- BF 221 - 228
- BF 229 - 276
- BF 277 - 282
- BF 283 - 304
- BF 305 - 326
- AUG. 2, 1988
- AUG. 3, 1988
- SEP. 18, 1988
- SEP. 4, 1988
- SEP. 10, 1988
- AUG. 4, 1988
- SEP. 10, 1988
- SEP. 10, 1988
- SEP. 10, 1988
- SEP. 10, 1988
- SEP. 10, 1988
- SEP. 10, 1988

NOTES

All claim measure 1500' x 600'. Location monuments are 15' from end line on center. Section lines from Bean Flat East, NV. T.5' quad. and projected to the south. Corner and side center monuments number from 1 thru 6 in a clockwise manner starting in the NW corner.

FILED AT THE REQUEST OF
MOLYCORP INC
on Oct 26 19 88 at 5 minutes past 2 A M.
RECORDS OF DEPUTY CLERK, NEVADA M.N. BEBELEH, RECORDER
File No. 124217 Fee \$ 1240.00



UNION MOLYCORP

BF LODE CLAIMS

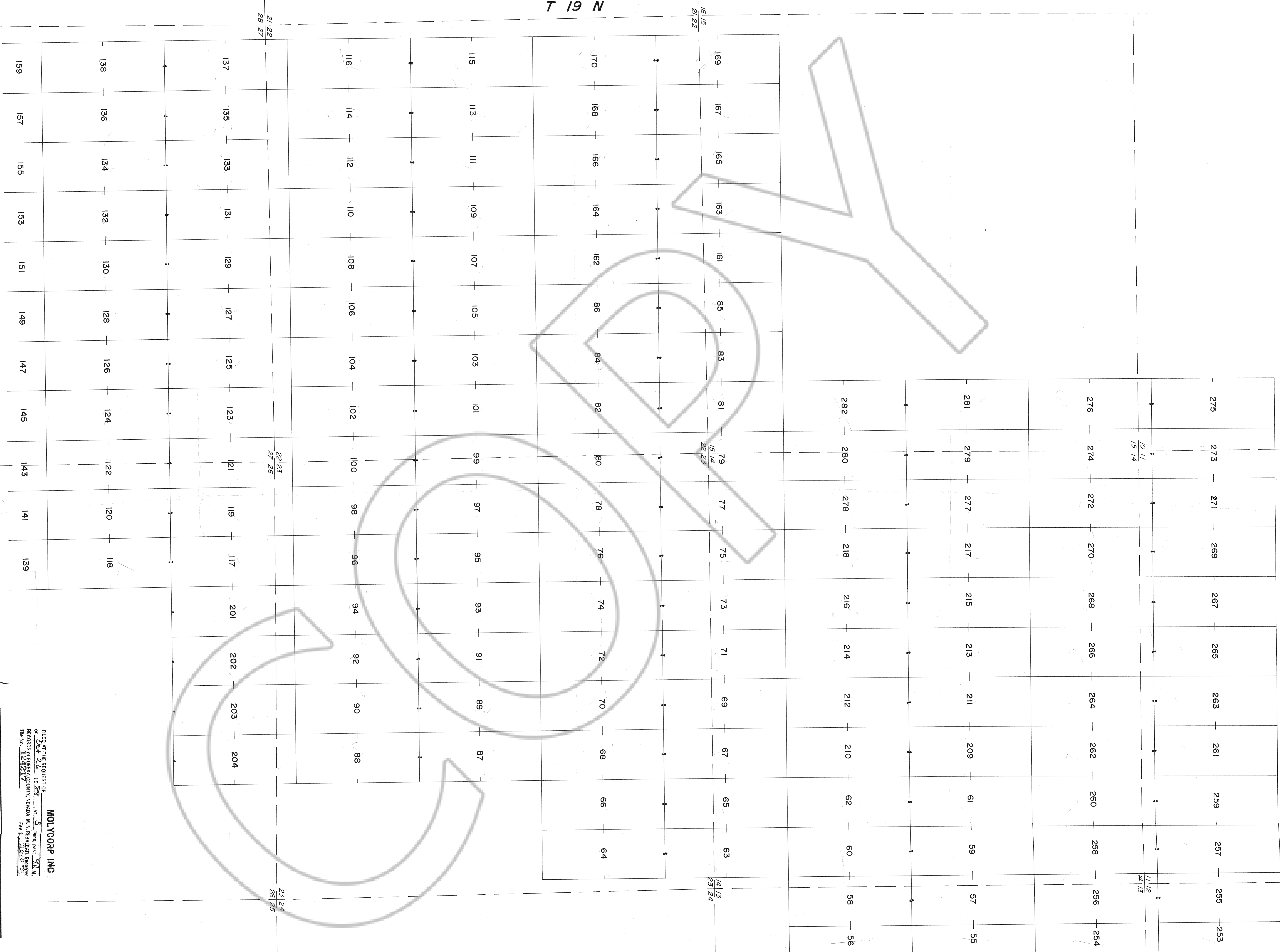
BEAN FLAT AREA

COUNTY: EUREKA STATE: NEVADA

SCALE 0 500 1000 feet

DATE: 10-26-88 DATA BY: RWLH DRAFTED BY: PCJ SHEET 1

124217



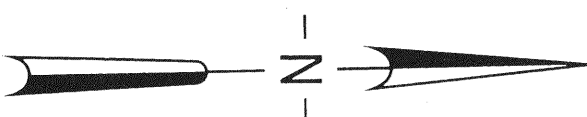
CONTINUED FROM SHEET 1

CONTINUED ON SHEET 3

FILED AT THE REQUEST OF
MOLYCORP INC
 on Oct 26 1988 at 5:19 AM, East 7th St.
 RECORDS OF EUREKA COUNTY, NEMUDA, M. N. REALEXIT, RECORDER
 Fee \$ 23.00

REVISIONS	
DATE	BY
UNIM MOLYCORP	
BEAN FLAT AREA	
BF LODGE CLAIMS	
SCALE	500 feet
COUNTY:	EUREKA
STATE:	NEVADA
DATE: 10-18-88	DRAWN BY: R.W.H.
	DRAFTED BY: R.C.J.
	SHEET 2

124217



T 19 N

21 22
28 27

16 15
27 22

10 11
15 14

11 12
14 13

22 23
27 26

23 24
26 25

15 14
22 23

14 13
23 24

138	136	134	132	130	128	126	124	122	120	118
159	157	155	153	151	149	147	145	143	141	139
160	158	156	154	152	150	148	146	144	142	140

28 27
33 34

27 26
34 35

289	287	285	283	303	301	299	297	295	293	291
290	288	286	284	304	302	300	298	296	294	292
305	307	309	311	313	315	317	319	321	323	325
306	308	310	312	314	316	318	320	322	324	326

T 19 N
T 18 N

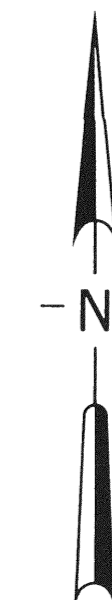
33 34
4 3

34 35
3 2

R 49 E

FILED AT THE REQUEST OF
MOLYCORP INC
on Oct 26 19 88
RECORDS OF EUREKA COUNTY, NEVADA M. N. REBER, CLERK
File No. 124217 Fee \$ 272.00

124217



REVISIONS			
DATE BY			
<h2>BF LODE CLAIMS</h2>			
BEAN FLAT AREA			
COUNTY: EUREKA	STATE: NEVADA		
SCALE	0	500	1000 feet
DATE: 10-19-88	DATA BY: R.W.H.	DRAFTED BY: PCJ	SHEET 3