

LOCATOR

ECM, Inc.
2720 3rd Avenue North
Billings, MT. 59101

LOCATION DATES

- 8/7/88 HCS 91-108, 141-166, 171-200
- 8/9/88 HCS 202-207
- 8/15/88 HCS 81-90, 109-118, 139, 140, 201, 213, 214
- 8/16/88 HCS 33-80, 123-138
- 8/17/88 HCS 19-32, 119-122, 209-212
- 8/18/88 HCS 3-18, 208
- 8/19/88 HCS 1, 2, 167-170
- 8/20/88 HCS 215-218

BASIS OF CONTROL

Bearing : By triangulation from SE corner Sec. 36
T26N, R48E to NW corner Sec. 1 T25N,
R48 1/2E at 0°00'00". (From BLM Plat.)
Distance: From NW cor. Sec. 1 T25N, R48 1/2E
To : NE cor. HCS 145
Bear : N2°06'41"E 726'

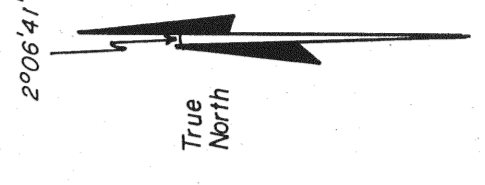
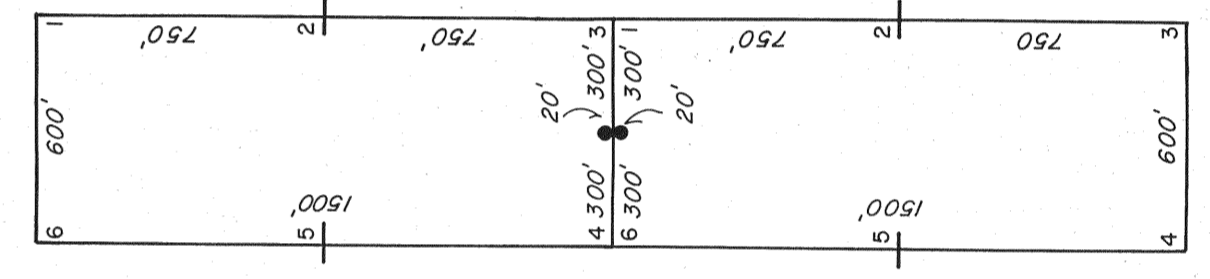
NOTES

All corners, side centers and location monuments
are 3" diameter PVC.

EXPLANATION

- + Found Section Corner
- Found Section Line
- - - Approximate Section Line
- Location Monuments
- x Witness Post

TYPICAL CLAIM



N

FILED AT THE REQUEST OF *ECM, Inc.*
A. J. [Signature], at 2:22 p.m., Sept. 22, 1988.
RECORDS OF EUREKA COUNTY, NEVADA. W. N. REBEY, CLERK.
Folio No. 122-13-01

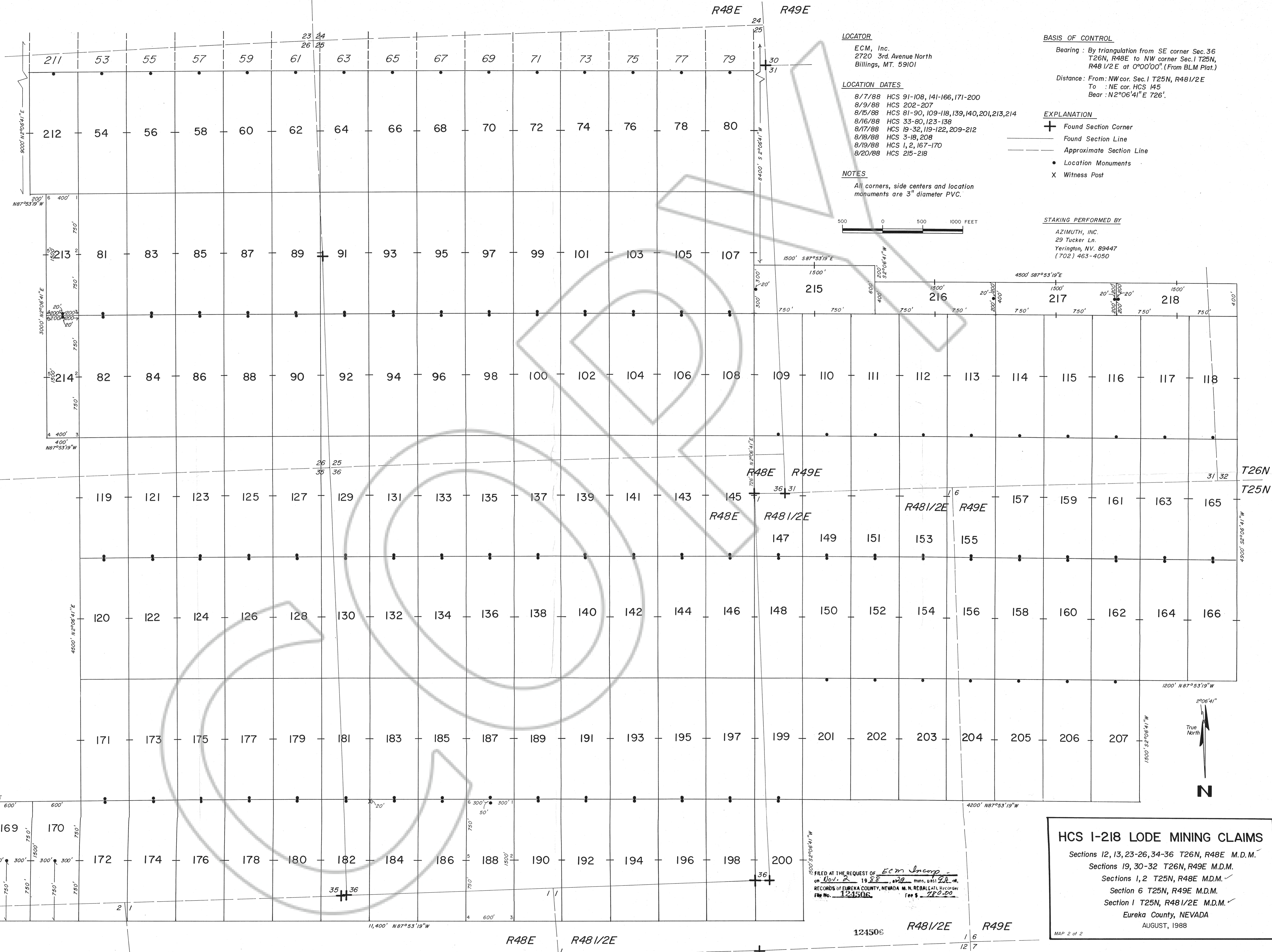
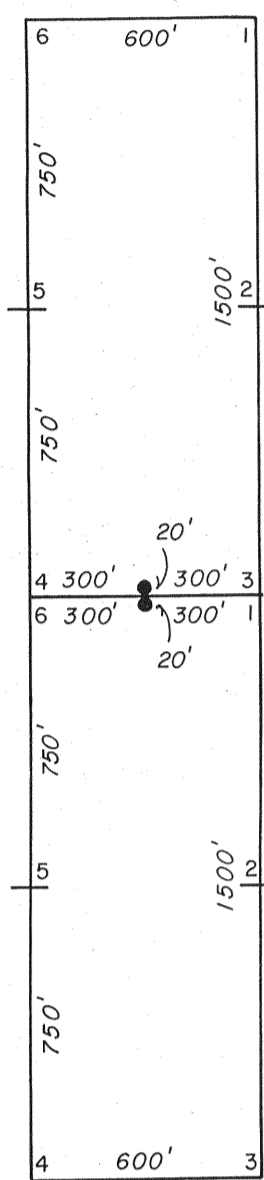


12-1506

HCS 1-218 LODE MINING CLAIMS

Sections 12, 13, 23, 26, 34-36 T26N, R48E M.D.M. ✓
Sections 19, 30-32 T26N, R49E M.D.M. ✓
Sections 1, 2 T25N, R48E M.D.M. ✓
Section 6 T25N, R49E M.D.M. ✓
Section 1 T25N, R48 1/2E M.D.M. ✓
Eureka County, NEVADA
AUGUST, 1988

TYPICAL CLAIMS



LOCATOR

ECM, Inc.
2720 3rd Avenue North
Billings, MT. 59101

LOCATION DATES

- 8/7/88 HCS 91-108, 141-166, 171-200
- 8/9/88 HCS 202-207
- 8/15/88 HCS 81-90, 109-118, 139, 140, 201, 213, 214
- 8/16/88 HCS 33-80, 123-138
- 8/17/88 HCS 19-32, 119-122, 209-212
- 8/18/88 HCS 3-18, 208
- 8/19/88 HCS 1, 2, 167-170
- 8/20/88 HCS 215-218

NOTES

All corners, side centers and location monuments are 3" diameter PVC.

BASIS OF CONTROL

Bearing : By triangulation from SE corner Sec. 36 T26N, R48E to NW corner Sec. 1 T25N, R48 1/2 E at 0°00'00". (From BLM Plat.)
Distance : From : NW cor. Sec. 1 T25N, R48 1/2 E To : NE cor. HCS 145 Bear : N2°06'41" E 726'

EXPLANATION

- + Found Section Corner
- Found Section Line
- - - Approximate Section Line
- Location Monuments
- X Witness Post

STAKING PERFORMED BY

AZIMUTH, INC.
29 Tucker Ln.
Yerington, NV. 89447
(702) 463-4050



HCS 1-218 LODGE MINING CLAIMS

- Sections 12, 13, 23-26, 34-36 T26N, R48E M.D.M. ✓
 - Sections 19, 30-32 T26N, R49E M.D.M. ✓
 - Sections 1, 2 T25N, R48E M.D.M. ✓
 - Section 6 T25N, R49E M.D.M. ✓
 - Section 1 T25N, R48 1/2 E M.D.M. ✓
- Eureka County, NEVADA
AUGUST, 1988

FILED AT THE REQUEST OF ECM Incorp.
on Nov. 2, 1988, at 11:22 mins. D451 218 M.
RECORDS OF EUREKA COUNTY, NEVADA M. N. REBALCATTI Recorder
File No. 124506 Fee \$ 280.20