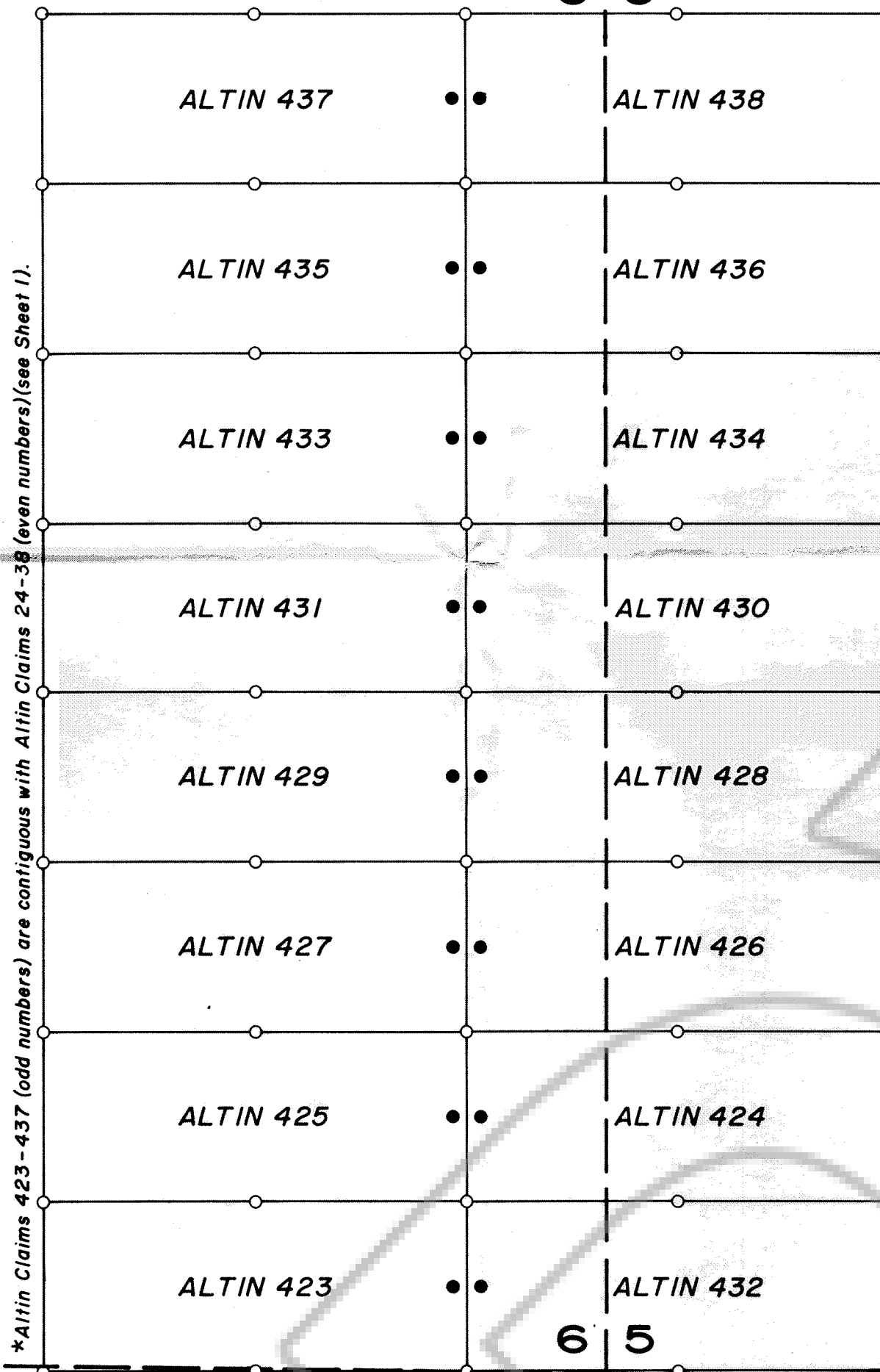


T17N
T16N

R53E

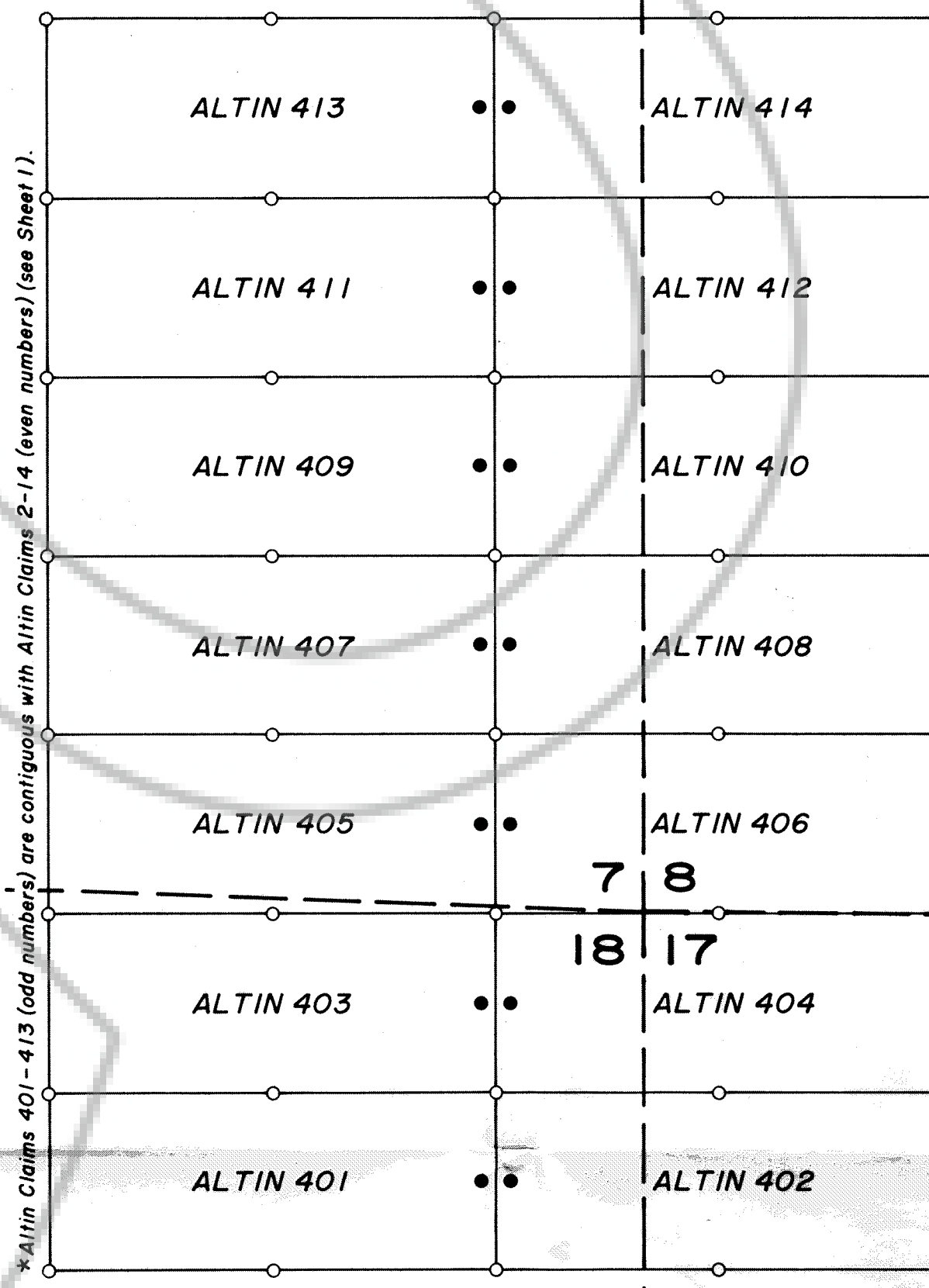
31 32

6 5



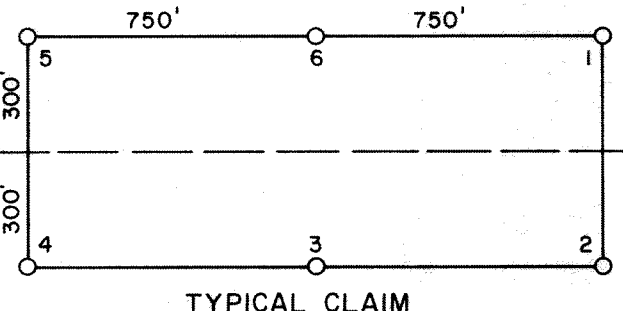
6 5

7 8



7 8

18 17



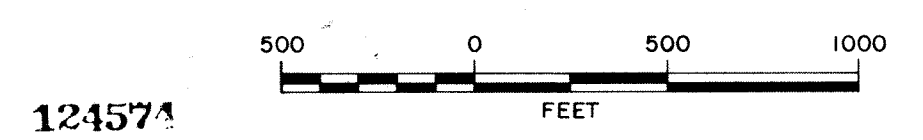
LOCATION DATES
 July 6, 1988: Altin 1-23, 101-123
 July 7, 1988: Altin 24-38, 124-138
 July 30, 1988: Altin 202-238
 August 19, 1988: Altin 93-100, 389-414, 423-438
 August 20, 1988: Altin 85-92, 285-300, 385-388
 August 21, 1988: Altin 186, 188, 190, 192, 194, 196, 198, 200


NOTE: Location monuments are 10' from end line of claims except as noted.

FILED AT THE REQUEST OF *Nerco Minerals Co.*
 on *Nov 7* 19 *88* at *5:28* mins. past *2:11* P. M.
 RECORDS OF EUREKA COUNTY, NEVADA M. N. REBALEATI, Recorder
 File No. *124574* Fee \$ *5.00*

AMENDED CLAIM MAP
 11/1/88
 ALTIN 422 amended to read ALTIN 432

SHEET 3 of 3



	
RESOURCE ASSOCIATES OF ALASKA, INC. 8100 N.E. Parkway Vancouver, WA 98662	
REVISIONS 	ALTIN LODE CLAIMS T 16 N, R 52 & 53 E EUREKA COUNTY, NEVADA
SCALE: 1" = 500'	DATA BY: G. ASH DRAFTED BY: KRP DATE: 9/1/88 PLATE