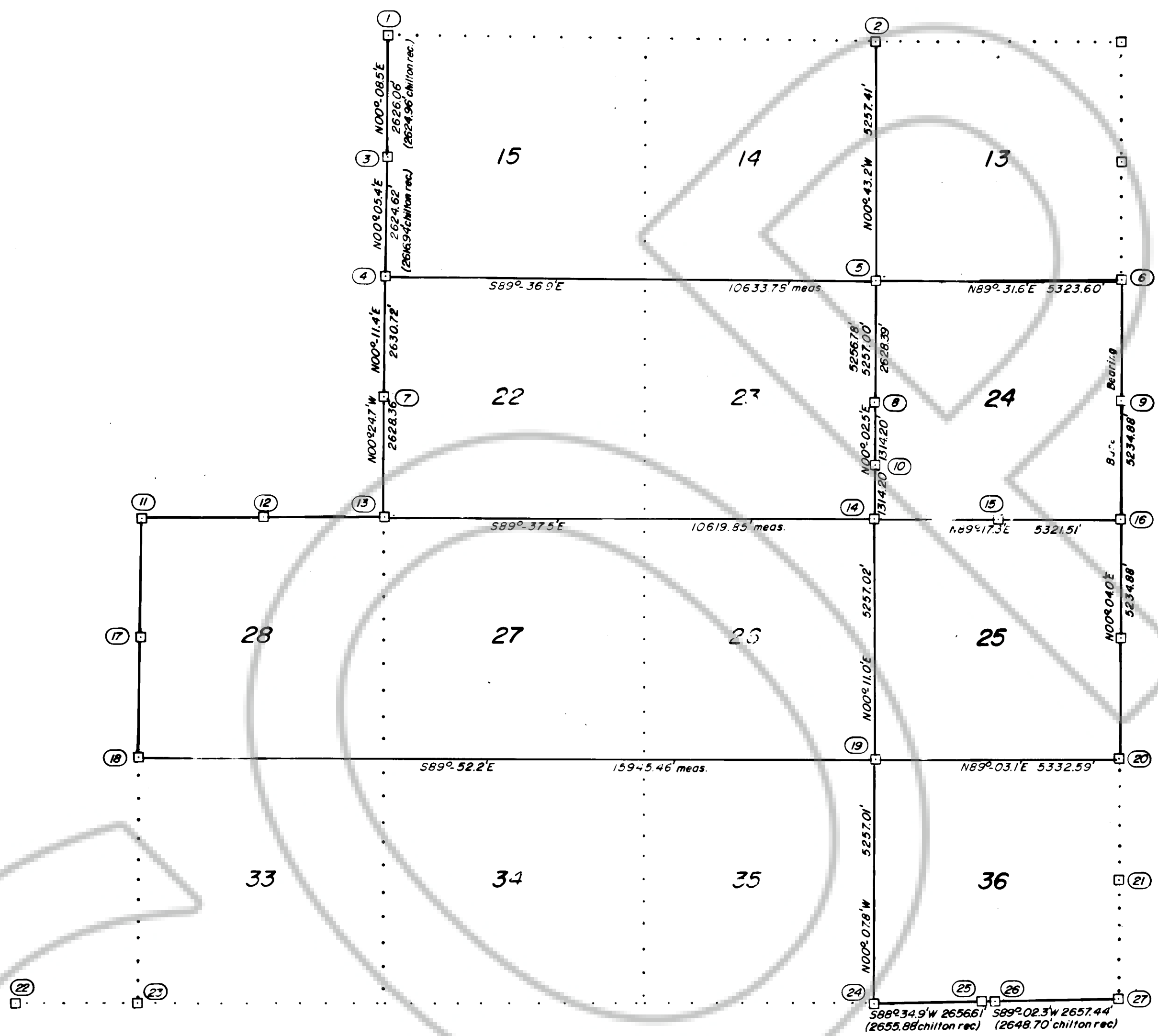


T36N R49E

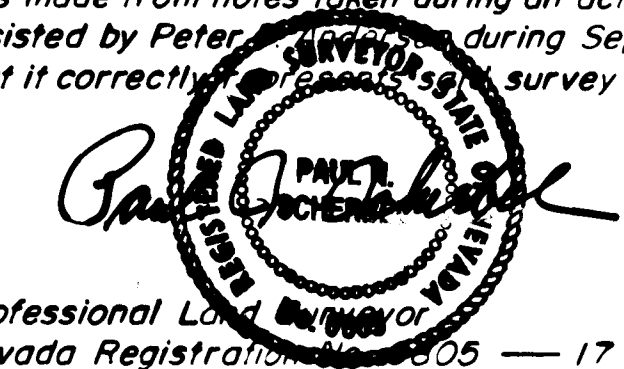


- CORNER DESCRIPTIONS**
- 1 -- found granite stone 6"x6"x6" mhd. // on E // on W w/5/8" rod alongside to SW mound of stone to W
 - 2 -- found a 1 1/2" black pipe w/brass cap mhd. MINERAL SURVEY NO. T36N R49E S11 S12 S13 1970 CHILTON ENGINEERING RLS1404 ELKO NEVADA
 - 3 -- found granite stone 11"x12"x12" mhd. 1/4 on W built mound to W
 - 4 -- found 2" pipe 28" long w/brass cap mhd. S14 S15 S21 S22 T36N R49E 1986 set in mound of stone
 - 5 -- set 2" pipe 31" long w/brass cap mhd. T36N R49E S14 S15 S21 S22 1988 built mound of stone to W
 - 6 -- found 1" IPAC mhd. S14 S15 S21 S22 1988 set 2" pipe 28" long w/brass cap mhd. T36N R49E S21 / S22 1988 built mound of stone to W
 - 8 -- set 2" pipe 31" long w/brass cap mhd. T36N R49E S14 / S24 1988 built mound of stone to E
 - 9 -- found 2" pipe 28" long w/brass cap mhd. 1/4 S14 S15 S24 S19 1984 1986
 - 10 -- set 2" pipe 31" long w/brass cap mhd. T36N R49E S11 / S14 S23 S24 1988 monument of stone to W
 - 11 -- found granite stone 1.0"x0.8"x0.8" above ground mhd. // on S // // on E large mound of stone to W
 - 12 -- found 1" black pipe w/brass cap mhd. 1/4 S21 S22 1914 built mound of stone to W
 - 13 -- found granite stone 12"x11"x8" mhd. // on S // // on E set 2" pipe 28" long w/brass cap mhd. T36N R49E S21 S22 S28 S27 1988 built mound of stone to E
 - 14 -- set 5/8" rebar w/IC mhd. T36N R49E S21 S24 S25 S25 WC N 30' or E 30'
 - 15 -- found yellow plastic cap mhd. SUMMIT ENG. RLS5072 4x4x5/8" steel reinforcing rod set in concrete
 - 16 -- found brass marker flush with grd mhd. MINERAL SURVEY NO. T36N R49E S24 S12 S25 S30 1988 CHILTON ENGINEERING RLS1404 ELKO NEVADA
 - 17 -- found 1" pipe w/brass cap mhd. 1/4 S29 / S28 1914 built mound of stone to W
 - 18 -- found granite stone 8"x8"x4" mhd. -- on S // // on E set 2" pipe 31" long w/brass cap mhd. T36N R49E S21 S23 S24 1988 built mound of stone to W
 - 19 -- set 2" pipe 31" long w/brass cap mhd. T36N R49E S24 S25 S24 1988 built mound of stone to W
 - 20 -- found 2" aluminum pipe w/aluminum cap mhd. WC T36N R49E S25 S30 S16 S11 1986
 - 21 -- found 3" galv. steel pipe w/brass cap mhd. 1/4 S14 S15 S11 T36N R49E 1984 1986
 - 22 -- found 1" black iron pipe w/brass cap mhd. 1/4 S11 SC 1914
 - 23 -- found 3" galv. steel pipe w/brass cap mhd. T36N R49E S11 SC 1914 large mound of stone to W
 - 24 -- found a 1 1/2" black pipe w/brass cap mhd. MINERAL SURVEY NO. T36N R49E SC S11 S16 1970 CHILTON ENGINEERING RLS1404 ELKO NEVADA
 - 25 -- found 3" black iron pipe w/brass cap mhd. C C S1 S5 R49E S50E T36N 1914 mound of stone to S
 - 26 -- found 1" black pipe w/brass cap mhd. GLO S 4 1/4 1914 built mound of stone to W
 - 27 -- found 3" black pipe w/brass cap mhd. T36N R49E S1 S1 S1 1986 1914 mound of stone to W

CERTIFICATE OF SURVEYOR

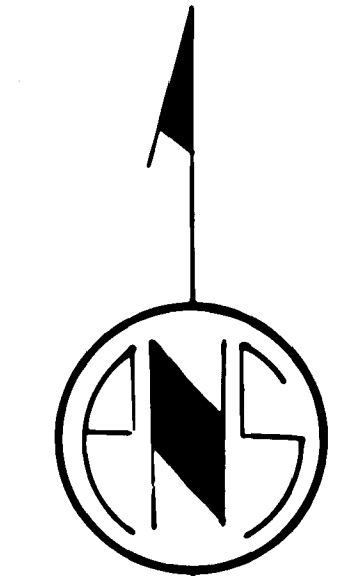
State of Wyoming)
County of Sublette) ss.

I, Paul N. Scherbel of Big Piney, Wyoming hereby certify that this plat was made from notes taken during an actual survey made by me competantly assisted by Peter Scherbel during September and October, 1988 and that it correctly represents the survey as monumented upon the ground.



LEGEND
□ indicates a corner record filed in the Office of the County Recorder.

Basis of bearing The east line of T36N, R49E from plat of T36N, R50E surveyed by the Bureau of Land Management approved 3 April 1987 = N00°04'E and concurs with plat of Mark Chilton, RLS1404 filed on 16 September 1970.



PLAT BY THE ORDER OF *Stephen J. Hull*
on *Oct 28 1988* at *Big Piney, Nevada*
RECORDS OF EUREKA COUNTY, NV
FILE NO. *12198*

RECORD OF SURVEY
for
STEPHEN J. HULL, ATTORNEY-AT-LAW
PLAT OF SURVEY OF PART OF
T36N R49E
EUREKA COUNTY, NEVADA