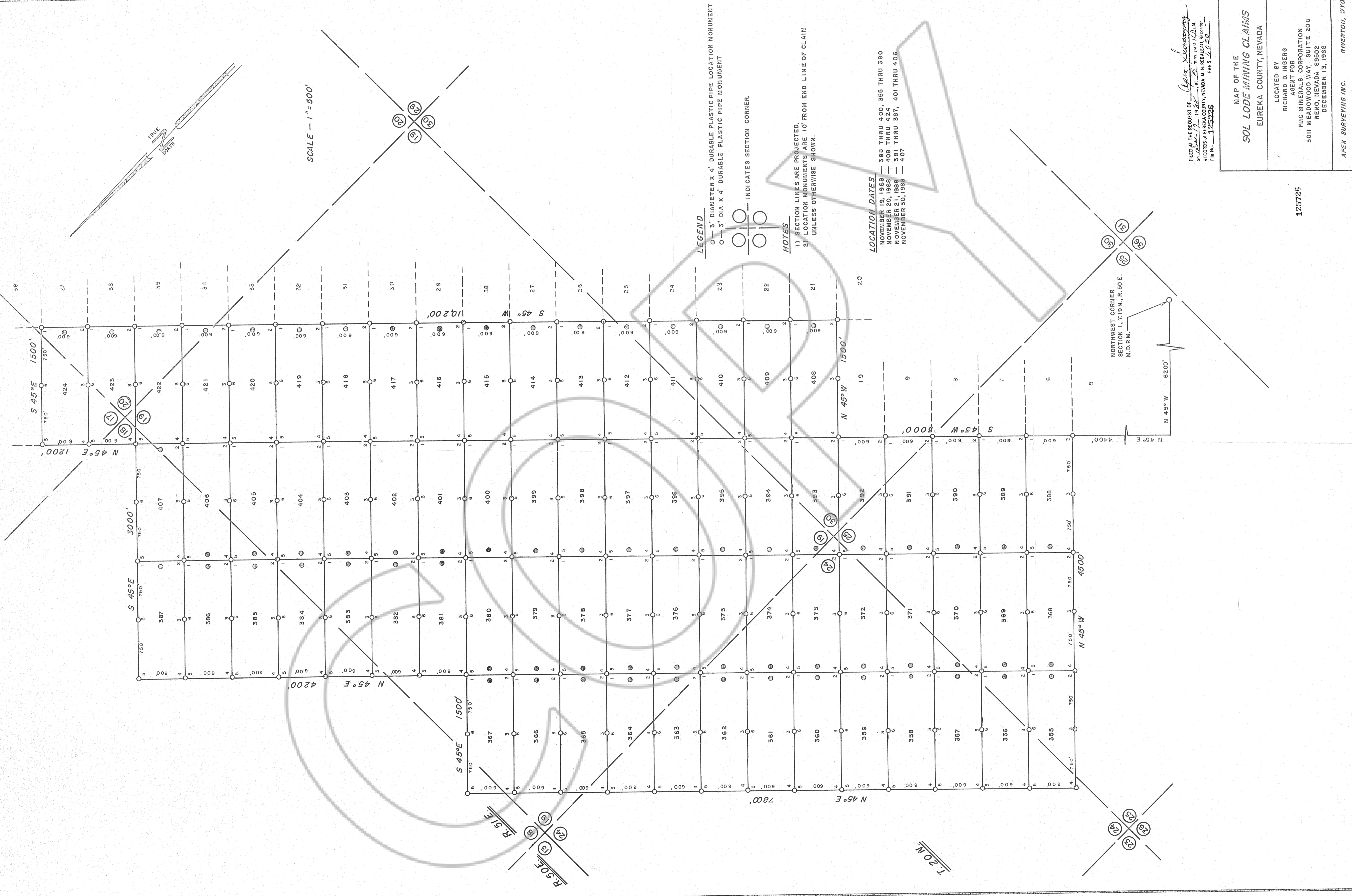
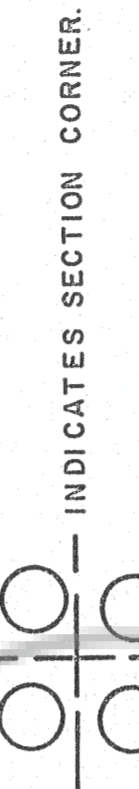


SCALE - 1" = 500'



LEGEND

- — 3" DIAMETER X 4' DURABLE PLASTIC PIPE LOCATION MONUMENT
- — 3" DIA X 4' DURABLE PLASTIC PIPE MONUMENT



NOTES

- SECTION LINES ARE PROJECTED.
- LOCATION MONUMENTS ARE 10' FROM END LINE OF CLAIM UNLESS OTHERWISE SHOWN.

LOCATION DATES

- NOVEMBER 19, 1988 — 380 THRU 400, 385 THRU 380
- NOVEMBER 20, 1988 — 408 THRU 424
- NOVEMBER 21, 1988 — 381 THRU 387, 401 THRU 406
- NOVEMBER 30, 1988 — 407

NORTHWEST CORNER SECTION 1, T.19N., R.50E. M.D.P.M.

FILED THE REQUEST OF *Apex Surveying*
 on *Dec 17* 19 *88* at *11:45 AM*, DIST. *11A.M.*
 RECORDS OF EUREKA COUNTY, NEVADA IN REBAL EAST RECORDS
 FILE NO. **125725** Fee \$ **6.50**

MAP OF THE
SOL LODGE MINING CLAIMS
 EUREKA COUNTY, NEVADA

LOCATED BY
 RICHARD D. INBERG
 AGENT FOR
 FMC MINERALS CORPORATION
 5011 MEADOWOOD WAY, SUITE 200
 RENO, NEVADA 89502
 DECEMBER 13, 1988

APEX SURVEYING INC. RIVERTON, WY2

125725