

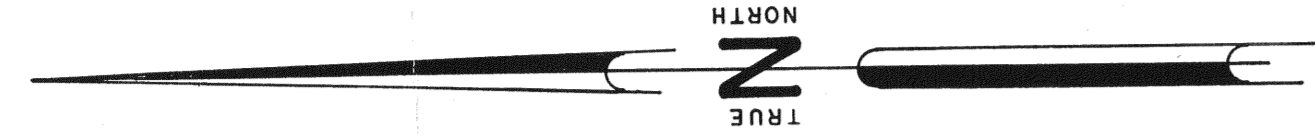
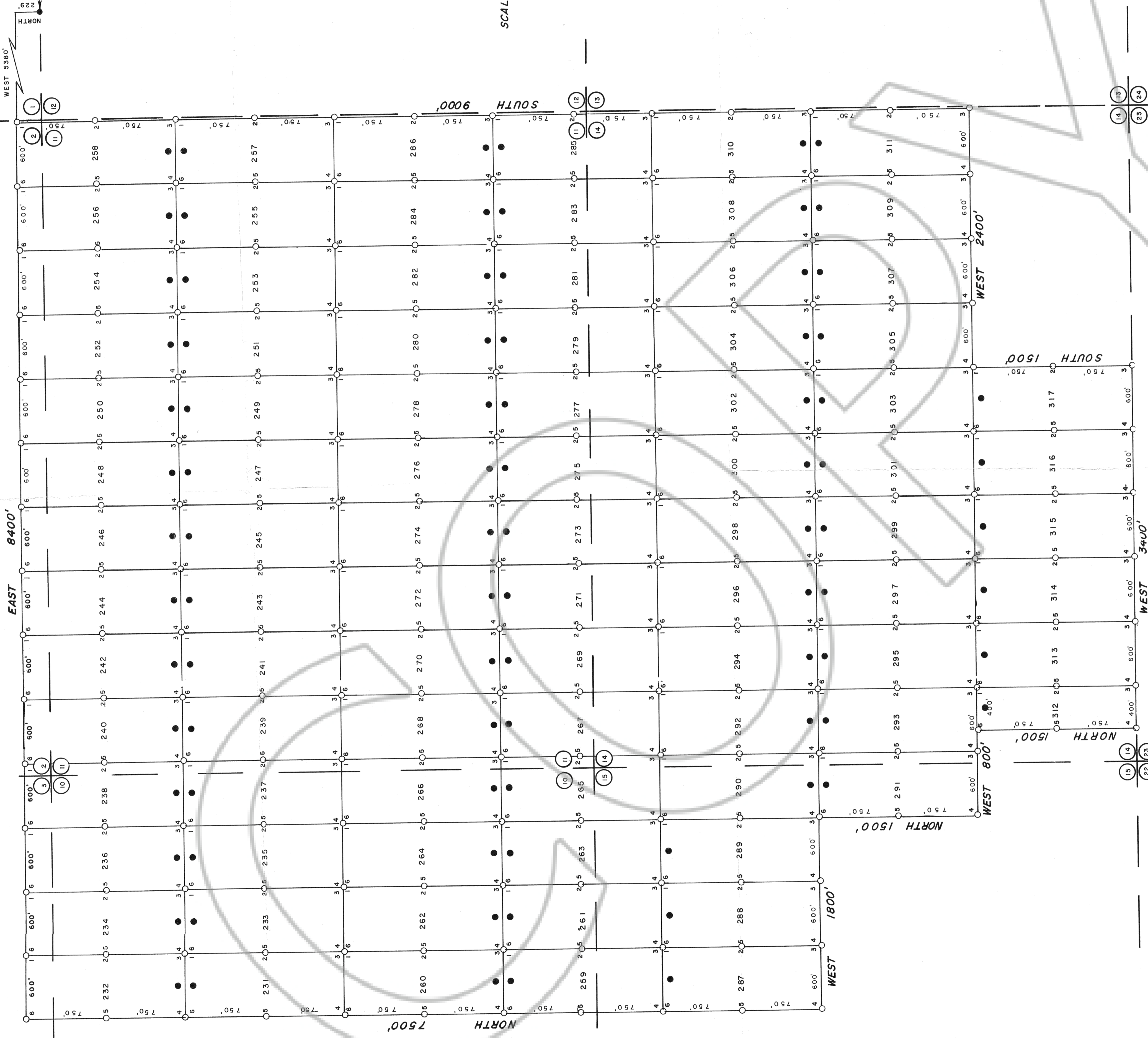
NORTHEAST CORNER
SECTION 12, T.18N., R.52E.
M.D.P.M.

R. 52 E.

WEST 5380'

NORTH

EAST 8400'



SCALE — 1" = 500'

T. 18 N.

LOCATION DATES
DECEMBER 1, 1988 — 302 THRU 311
DECEMBER 2, 1988 — 231 THRU 286, 290 THRU 301, 312 THRU 317
DECEMBER 3, 1988 — 287 THRU 289

NOTES
1) SECTION LINES ARE PROJECTED.
2) LOCATION MONUMENTS ARE 10' FROM END LINE OF CLAIM UNLESS OTHERWISE SHOWN.

LEGEND
● — 3" DIAMETER X 4' DURABLE PLASTIC PIPE LOCATION MONUMENT
○ — 3" DIA. X 4' DURABLE PLASTIC PIPE MONUMENT
○ — INDICATES SECTION CORNER

FILED AT THE REQUEST OF *Apex Surveying*
ON *Dec. 27 1988* BY *Terry Zenk*
RECORDS OF EUREKA COUNTY, NEVADA, M.N. RECORDED IN BOOK 110, PAGE 205
FILE NO. — 125855

MAP OF THE
BASS LODE MINING CLAIMS
EUREKA COUNTY, NEVADA

LOCATED BY
TERRY ZENK
AGENT FOR
FMC MINERALS CORPORATION
5011 MEADOWOOD WAY, SUITE 200
RENO, NEVADA 89502
DECEMBER 15, 1988

APEX SURVEYING INC. RIVERTON, WYO.

125855