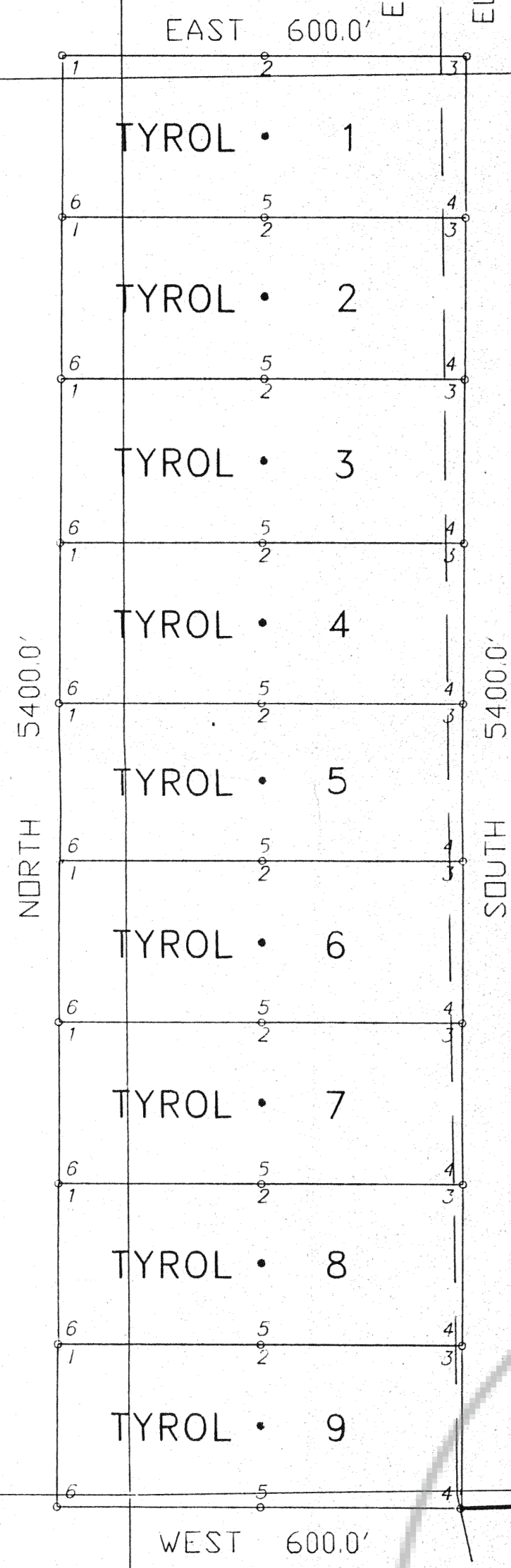


6

5

EUREKA CO.
ELKO CO.



TYROL • 1

TYROL • 2

TYROL • 3

TYROL • 4

TYROL • 5

TYROL • 6

TYROL • 7

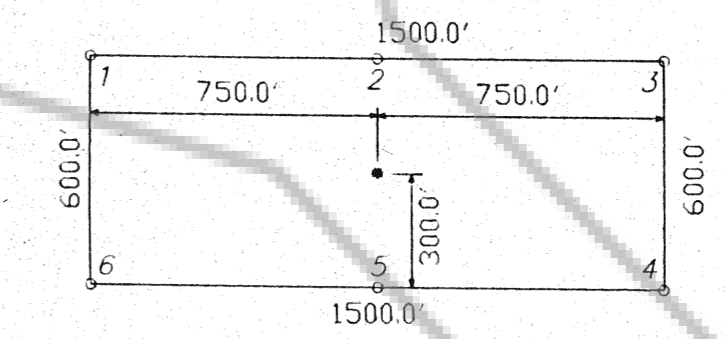
TYROL • 8

TYROL • 9

WEST 600.0'

S 2° W 4006.4'

T.32N.,R.52E.,M.D.B.&M.



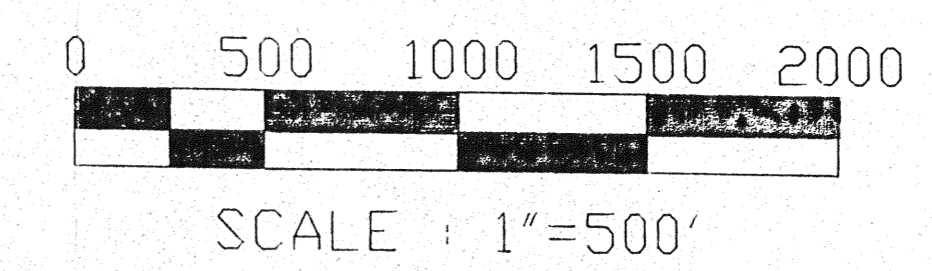
TYPICAL CLAIM DIMENSIONING

LOCATION DATE: NOVEMBER 16, 1988

LEGEND

- ◊ FOUND SECTION CORNER
- CLAIM POST - 3" DIA. X 5' - 0" P.V.C. PIPE APPROPRIATELY MARKED FOR THE CORNER.
- LOCATION MONUMENT - 3" DIA. X 5' - 0" P.V.C. PIPE W/LOCATION NOTICE.

NOTES:
THIS AREA IS UNSURVEYED. ALL SECTION LINES WERE PROJECTED FROM SOUTHWEST CORNER OF SECTION 9, T.32N., R.52E., M.D.B.& M.



MAP OF
TYROL 1-9 LODE CLAIMS

SITUATED IN UNSURVEYED SECTIONS 5-8, 17&18;
T.32N.,R.52E., M.D.B.& M.

EUREKA COUNTY, NEVADA

BY

NEWMONT GOLD COMPANY

P.O. BOX 669
CARLIN, NEVADA 89822

7

8

18

17

125865

FILED AT THE REQUEST OF:
NEWMONT GOLD COMPANY
DATE: 12-27-88
TIME: 2:21 P.M.
FILE NO.: 125865 Fee: 135.00

EUREKA COUNTY RECORDER

D:TYROLMA2