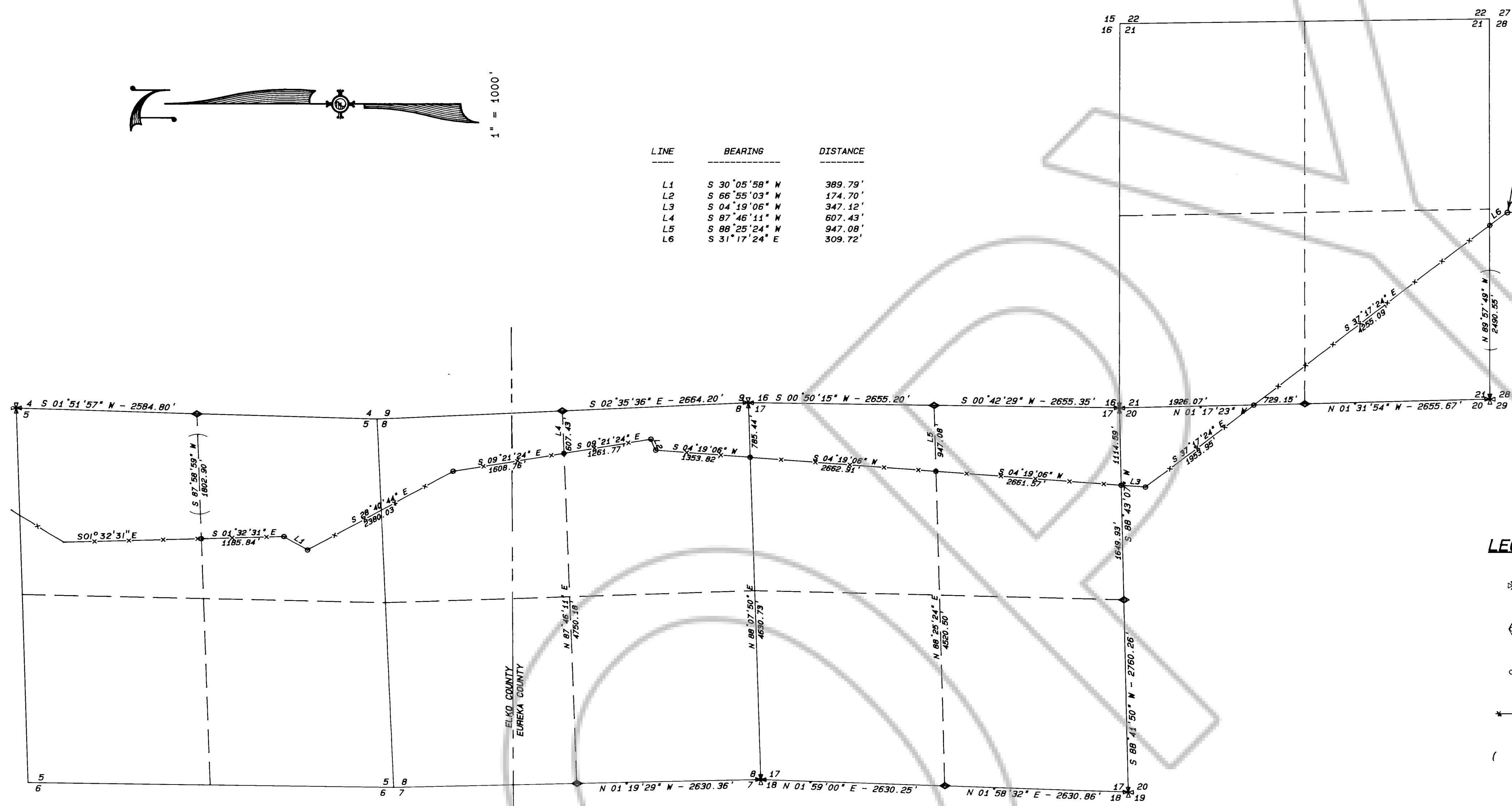


LINE	BEARING	DISTANCE
L1	S 30°05'58" W	389.79'
L2	S 66°55'03" W	174.70'
L3	S 04°19'06" W	347.12'
L4	S 87°46'11" W	607.43'
L5	S 88°25'24" W	947.08'
L6	S 31°17'24" E	309.72'

ANGLE POINT DESCRIBED IN THE DOCUMENT RECORDED NOVEMBER 22, 1988 IN BOOK 191, PAGE 104 OF THE OFFICIAL RECORDS OF EUREKA COUNTY, NEVADA AS BEING THE NORTH QUARTER CORNER OF SECTION 28, TOWNSHIP 36 NORTH, RANGE 50 EAST, M.D.B. & M.



LEGEND:

- ⊗ FD. BRASS CAP @ SECTION CORNER
- ⊙ FD. BRASS CAP @ 1/4 SECTION CORNER
- CALCULATED POINT, NOTHING SET
- *—*— EXISTING FENCE LINE
- () PROTRACTED BEARING FROM THE OFFICIAL TOWNSHIP PLAT OF T.36 N., R.50 E., M.D.B. & M. APPROVED APRIL 3, 1987.

SURVEYOR'S CERTIFICATE:

I THOMAS C. BALLEW, A REGISTERED LAND SURVEYOR IN THE STATE OF NEVADA, DO HEREBY CERTIFY THAT THIS IS A TRUE AND ACCURATE MAP OF THE LAND SURVEYED UNDER MY SUPERVISION AND DIRECTION ON THE 28th DAY OF JULY, 1989, AT THE INSTANCE OF ELKO LAND AND LIVESTOCK COMPANY AND THAT THE MONUMENTS ARE OF THE CHARACTER SHOWN AND OCCUPY THE POSITIONS INDICATED HEREON AND ARE SUFFICIENT TO ENABLE THIS SURVEY TO BE RETRACED.

Thomas C. Ballew
 THOMAS C. BALLEW - R.L.S. 5072

Jan 9, 1989
 DATE

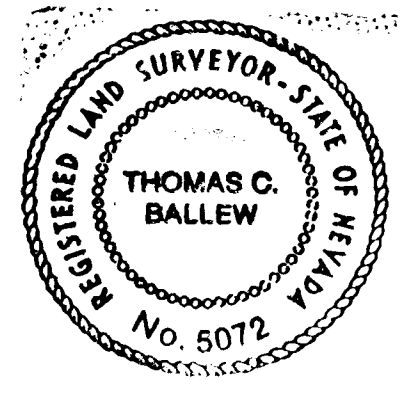


BASIS OF BEARINGS:

THE LINE BETWEEN THE SOUTHEAST SECTION CORNER AND THE NORTHEAST SECTION CORNER OF SECTION 25 TOWNSHIP 36 NORTH, RANGE 49 EAST, M.D.B. & M. TAKEN AS N 00°00'00"E AS SHOWN ON THE PLAT OF TOWNSHIP T.36 N., R.49 E., M.D.B. & M APPROVED FEBRUARY 13th, 1873.

NOTE:

THE ELKO/EUREKA COUNTY LINE SHOWN WAS PROTRACTED FROM THE BEAVER PEAK QUADRANGLE MAP OF 1970.



FILE NO. 126189
 Filed at the request of Summit Engineering
 Date 1-19 1989
 Time 9:00 A.M.
 Eureka County Recorder

RECORD OF SURVEY FOR	
ELKO LAND AND LIVESTOCK COMPANY	
LOCATED IN PORTIONS OF SECTIONS 5, 8, 17 & 21 T.36 N., R.50 E., M.D.B. & M.	
ELKO & EUREKA COUNTIES	NEVADA
SUMMIT ENGINEERING CORPORATION CONSULTING ENGINEERS AND SURVEYORS 572 FIFTH STREET ELKO, NEVADA 89601-1202 735-8058	SHEET <u>1</u> OF <u>1</u>