

20

R. 51 E.

21

22

29

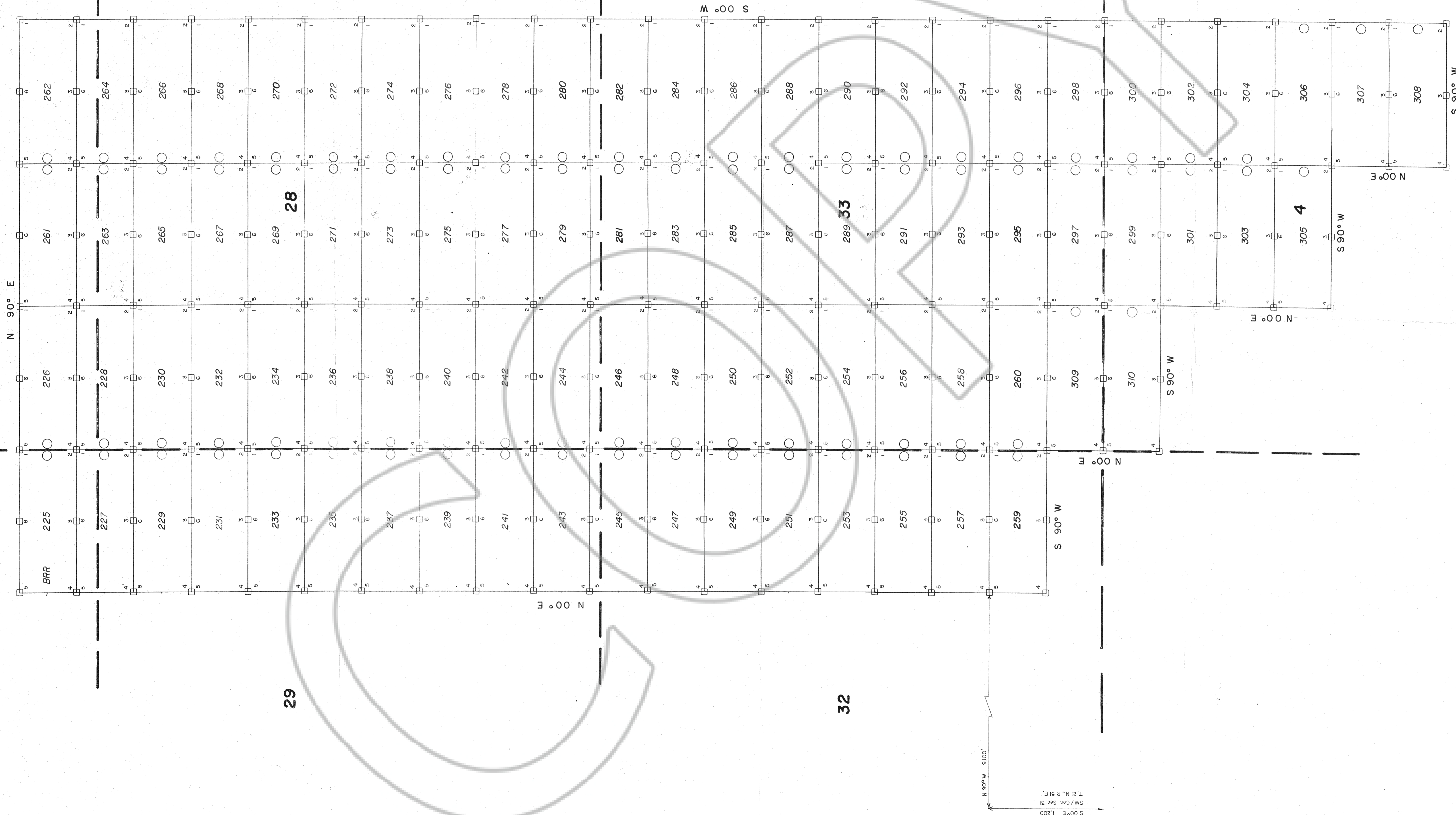
28

27

32

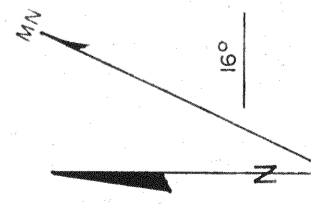
33

34



○ = LOCATION MONUMENT
 ALL CLAIMS ARE 600' X 1500' UNLESS OTHERWISE NOTED.
 MONUMENT LOCATIONS ARE OFFSET TO CORNER UNLESS OTHERWISE NOTED.
 ALL LOCATION MONUMENTS, SEE CENTERS 3" DIA. BY 5' IN LENGTH PVC PIPE.

MAP
 OF
 MINING CLAIMS
 TOWNSHIP 20 S 21 NORTH, RANGE 51 EAST
 EUREKA COUNTY, NEVADA
 BRR RECORDS
 BOX 738
 BATTLE MOUNTAIN, NEVADA 89820



Scale: 1" = 500'

BRR CLAIMS 283 - 310
 LOCATED - DECEMBER 4-6, 1988

Survey and Map by: ROCKY MOUNTAIN SURVEYORS, Albuquerque, New Mexico Job No. 84-88
126433

FILED BY THE REQUEST OF *BRR Prospector*
 on *28* 19 *87* at *21* N. 51 E. 34
 RECORDS OF EUREKA COUNTY, NEVADA M. N. REPAIR SECTION
 File No. **126433** Fee \$ *2.00*