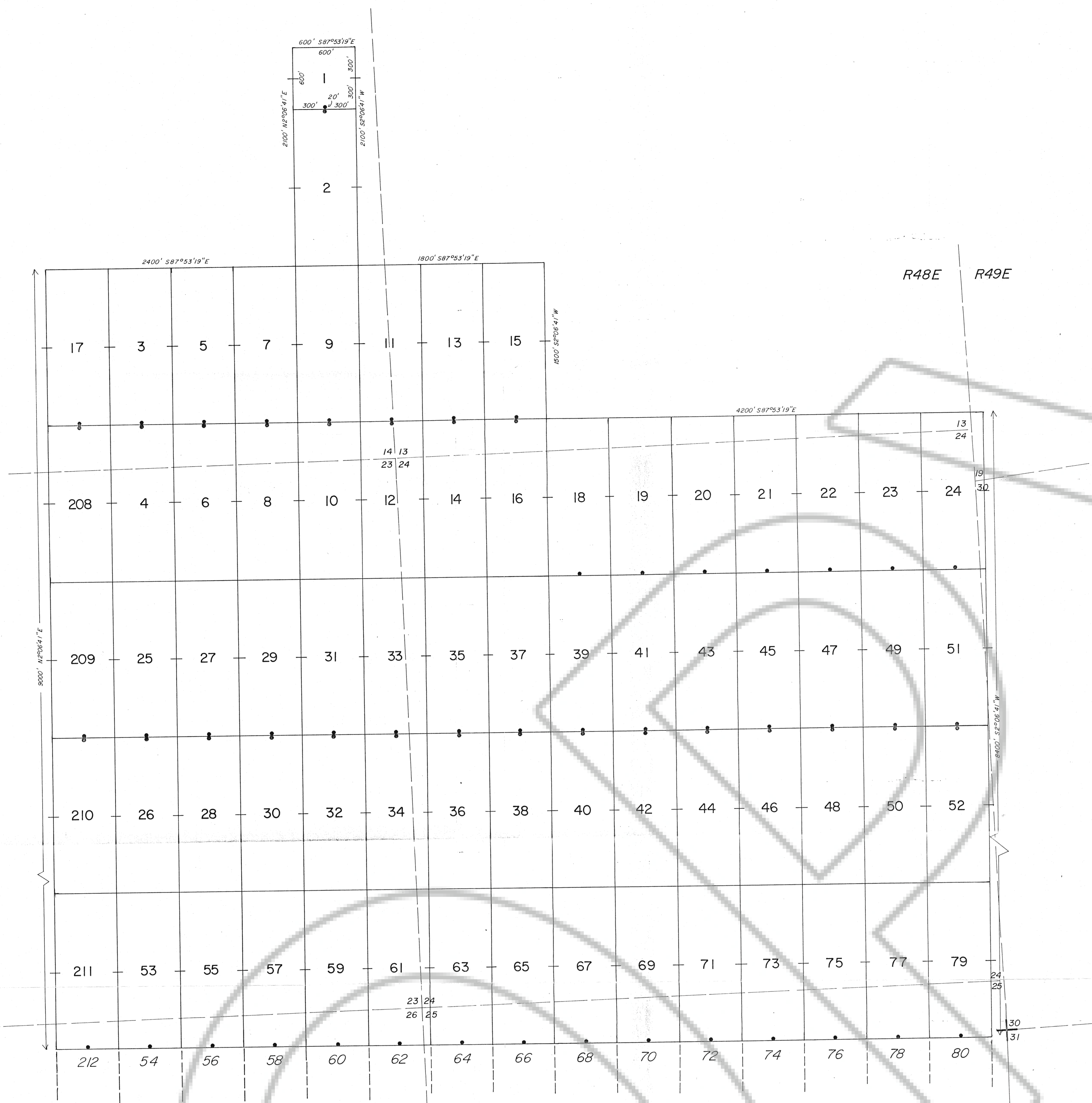


T26N



LOCATOR

ECM, Inc.
2720 3rd Avenue North
Billings, MT. 59101

LOCATION DATES

8/7/88 HCS 91-108, 141-166, 171-200
 8/9/88 HCS 202-207
 8/15/88 HCS 81-90, 109-118, 139, 140, 201, 213, 214
 8/16/88 HCS 33-80, 123-138
 8/17/88 HCS 19-32, 119-128, 209-212
 8/18/88 HCS 3-18, 208
 8/19/88 HCS 1, 2, 167-170
 8/20/88 HCS 215-218

BASIS OF CONTROL

Bearing: By triangulation from SE corner Sec. 36
 T26N, R48E to NW corner Sec. 1 T25N,
 R48 1/2 E at 0°00'00" (From BLM Plat.)
 Distance: From: NW cor. Sec. 1 T25N, R48 1/2 E
 To: NE cor. HCS 145
 Bear. N2°08'41" E 726'

NOTES

All corners, side centers and location monuments
are 3" diameter PVC.

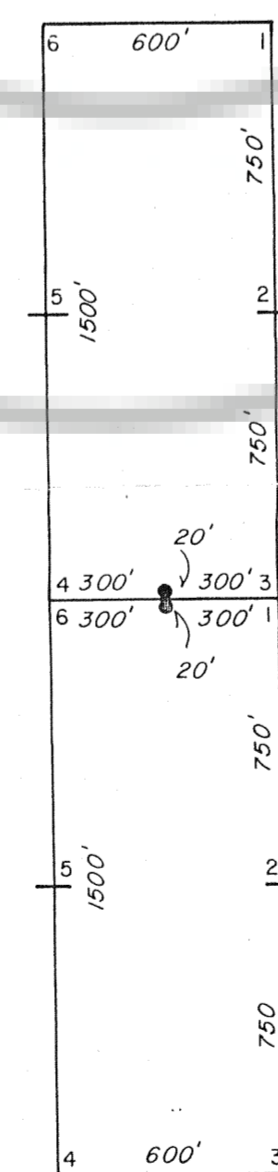
STAKING PERFORMED BY

AZIMUTH, INC.
29 Tackler Ln.
Yerington, NV 89447
(702) 463-4050

EXPLANATION

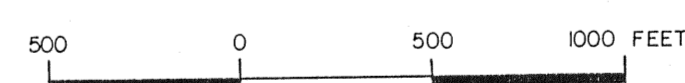
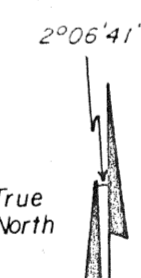
- + Found Section Corner
- Found Section Line
- - - - - Approximate Section Line
- Location Monuments
- X Witness Post

TYPICAL CLAIM



127290

FILED AT THE REQUEST OF Azimuth, Inc.
 on May 30 1988 at 11:48 a.m., Dist. 2 p.m.
 RECORDS & EUREKA COUNTY, NEVADA B. R. REBELETTI, CLERK
 File No. 257-2-92 Fee \$ 5.00



Amended

HCS 1-218 LOBE MINING CLAIMS
 Sections 12, 13, 23-26, 34-36 T26N, R48E M.D.M.
 Sections 19, 30-32 T26N, R49E M.D.M.
 Sections 1, 2 T25N, R48E M.D.M.
 Section 6 T25N, R49E M.D.M.
 Section 1 T25N, R48 1/2 E M.D.M.
 Eureka County, NEVADA
 AUGUST, 1988

MAP 1 of 2