

SHEET A

# PLAT OF THE TOWNSITE OF EUREKA, NEVADA.

EMBRACING THE SW 1/4 NW 1/4 AND W 1/2 SW 1/4 SECTION 13, THE SE 1/4 NE 1/4 AND SE 1/4 SECTION 14, NW 1/4 NE 1/4 AND E 1/2 NE 1/4 SECTION 23, THE W 1/2 NW 1/4 SECTION 24.  
TOWNSHIP N° 19 NORTH, RANGE N° 53 EAST OF THE MOUNT DIABLO MERIDIAN, NEVADA.

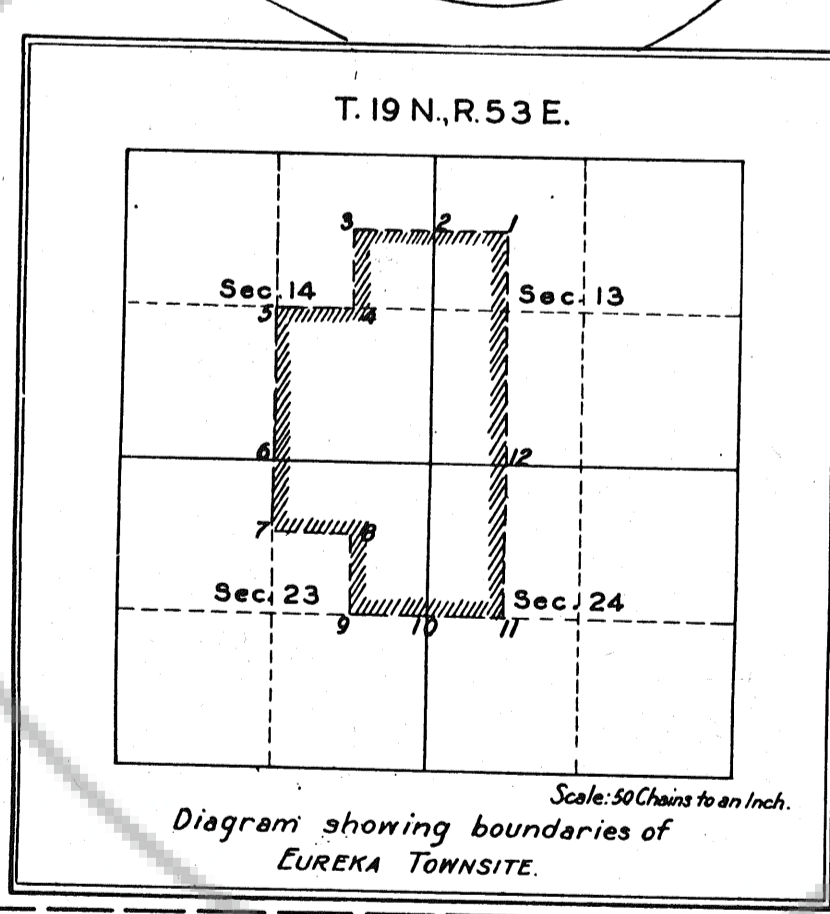
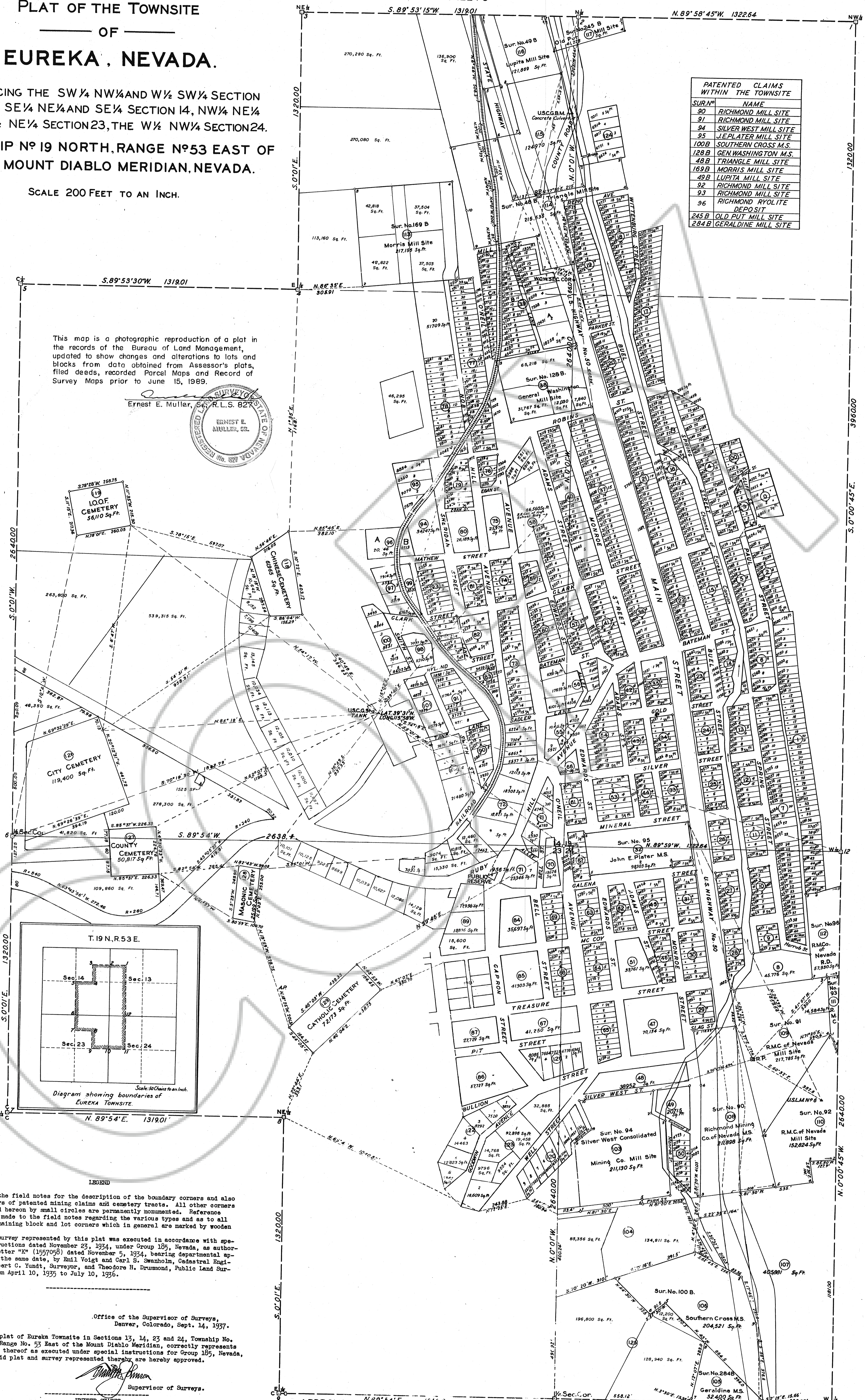
SCALE 200 FEET TO AN INCH.

IN THREE SHEETS

This map is a photographic reproduction of a plat in the records of the Bureau of Land Management, updated to show changes and alterations to lots and blocks from data obtained from Assessor's plats, filed deeds, recorded Parcel Maps and Record of Survey Maps prior to June 15, 1989.

Ernest E. Muller, S.R.L.S. 8275  
REGISTERED SURVEYOR  
STATE OF NEVADA  
ERNEST E. MULLER, SR.

SUR. NO.	NAME
90	RICHMOND MILL SITE
91	RICHMOND MILL SITE
94	SILVER WEST MILL SITE
95	J.E. PLATER MILL SITE
100B	SOUTHERN CROSS M.S.
128B	GEN WASHINGTON M.S.
48B	TRANGLE MILL SITE
169B	MORRIS MILL SITE
49B	LUPITA MILL SITE
92	RICHMOND MILL SITE
93	RICHMOND MILL SITE
96	RICHMOND RYOLITE DEPOSIT
245B	OLD PUT MILL SITE
284B	GERALDINE MILL SITE



### LEGEND

See the field notes for the description of the boundary corners and also the corners of patented mining claims and cemetery tracts. All other corners designated herein by small circles are permanently monumented. Reference should be made to the field notes regarding the various types and as to all of the remaining block and lot corners which in general are marked by wooden stakes.

The survey represented by this plat was executed in accordance with special instructions dated November 23, 1934, under Group 185, Nevada, as authorized by letter "K" (1557058) dated November 5, 1934, bearing departmental approval of the same date, by Emil Voigt and Carl S. Swanzholm, Cadastral Engineers, Robert C. Yundt, Surveyor, and Theodore H. Drummond, Public Land Surveyor, from April 10, 1935 to July 10, 1936.

Office of the Supervisor of Surveys,  
Denver, Colorado, Sept. 14, 1937.

This plat of Eureka Townsite in Sections 13, 14, 23 and 24, Township No. 19 North, Range No. 53 East of the Mount Diablo Meridian, correctly represents the survey thereof as executed under special instructions for Group 185, Nevada, and the said plat and survey represented thereby are hereby approved.

*Ernest E. Muller, Sr.*  
Supervisor of Surveys.

UNITED STATES  
DEPARTMENT OF THE INTERIOR  
GENERAL LAND OFFICE  
Washington, D. C., November 19, 1937.

The survey represented by this plat having been correctly executed in accordance with the requirements of law and the regulations of this office, is hereby accepted.

*Antoinette Frank*  
Assistant Commissioner.

APPROVAL N. 89° 54' E. 1315.0'

At a regular meeting of the Board of County Commissioners of Eureka County, State of Nevada, held on the 20th. day of June, 1989, this revised map was duly approved.

Attest: *James Shamp*  
County Clerk

*Ests. G. J. ...*  
Chairman

File No. 127447  
Filed at the request of Eureka County on the 20th. day of June, 1989 at 6 minutes past 1 o'clock P.M.

*Michael Rebelet*  
Eureka County Recorder