

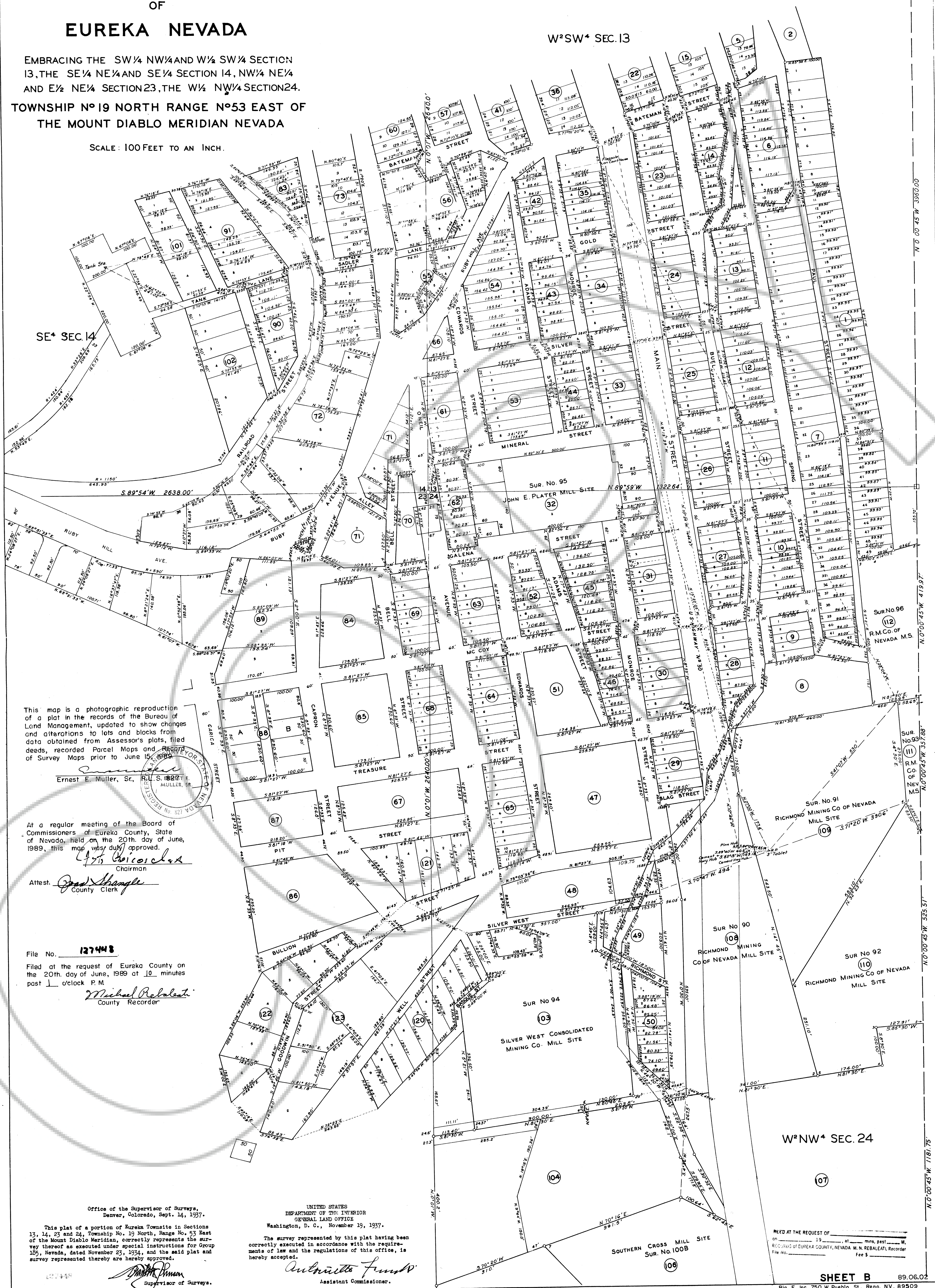
PLAT OF THE TOWNSHIP OF EUREKA NEVADA

EMBRACING THE SW 1/4 NW 1/4 AND W 1/2 SW 1/4 SECTION 13, THE SE 1/4 NE 1/4 AND SE 1/4 SECTION 14, NW 1/4 NE 1/4 AND E 1/2 NE 1/4 SECTION 23, THE W 1/2 NW 1/4 SECTION 24.

SCALE: 100 FEET TO AN INCH.

W 1/2 SW 1/4 SEC. 13

SE 1/4 SEC. 14



This map is a photographic reproduction of a plat in the records of the Bureau of Land Management, updated to show changes and alterations to lots and blocks from data obtained from Assessor's plots, filed deeds, recorded Parcel Maps and recorded Survey Maps prior to June 15, 1989.

Ernest E. Muller, Sr., R.L.S. 1827 E. MULLER, SR.

At a regular meeting of the Board of Commissioners of Eureka County, State of Nevada, held on the 20th day of June, 1989, this map was duly approved.

Attest: *Michael Rebaletti* County Clerk

File No. 127448  
Filed at the request of Eureka County on the 20th day of June, 1989 at 10 minutes past 1 o'clock P.M.  
*Michael Rebaletti* County Recorder

Office of the Supervisor of Surveys, Denver, Colorado, Sept. 14, 1937.  
This plat of a portion of Eureka Township in Sections 13, 14, 23 and 24, Township No. 19 North, Range No. 53 East of the Mount Diablo Meridian, correctly represents the survey thereof as executed under special instructions for Group 125, Nevada, dated November 23, 1934, and the said plat and survey represented thereby are hereby approved.  
*Michael Rebaletti* Supervisor of Surveys.

UNITED STATES DEPARTMENT OF THE INTERIOR GENERAL LAND OFFICE Washington, D. C., November 19, 1937.  
The survey represented by this plat having been correctly executed in accordance with the requirements of law and the regulations of this office, is hereby accepted.  
*Michael Rebaletti* Assistant Commissioner.

W 1/2 NW 1/4 SEC. 24