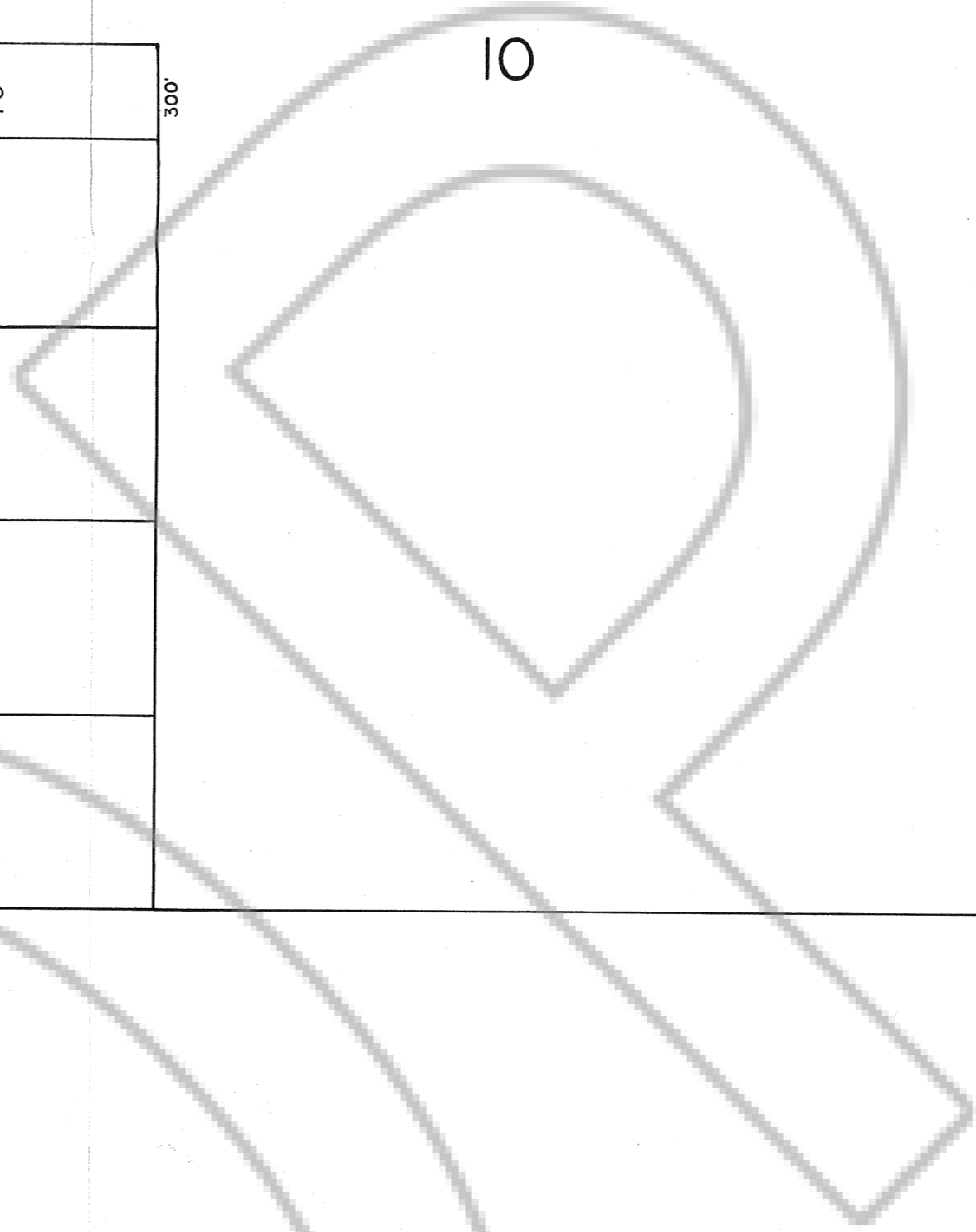
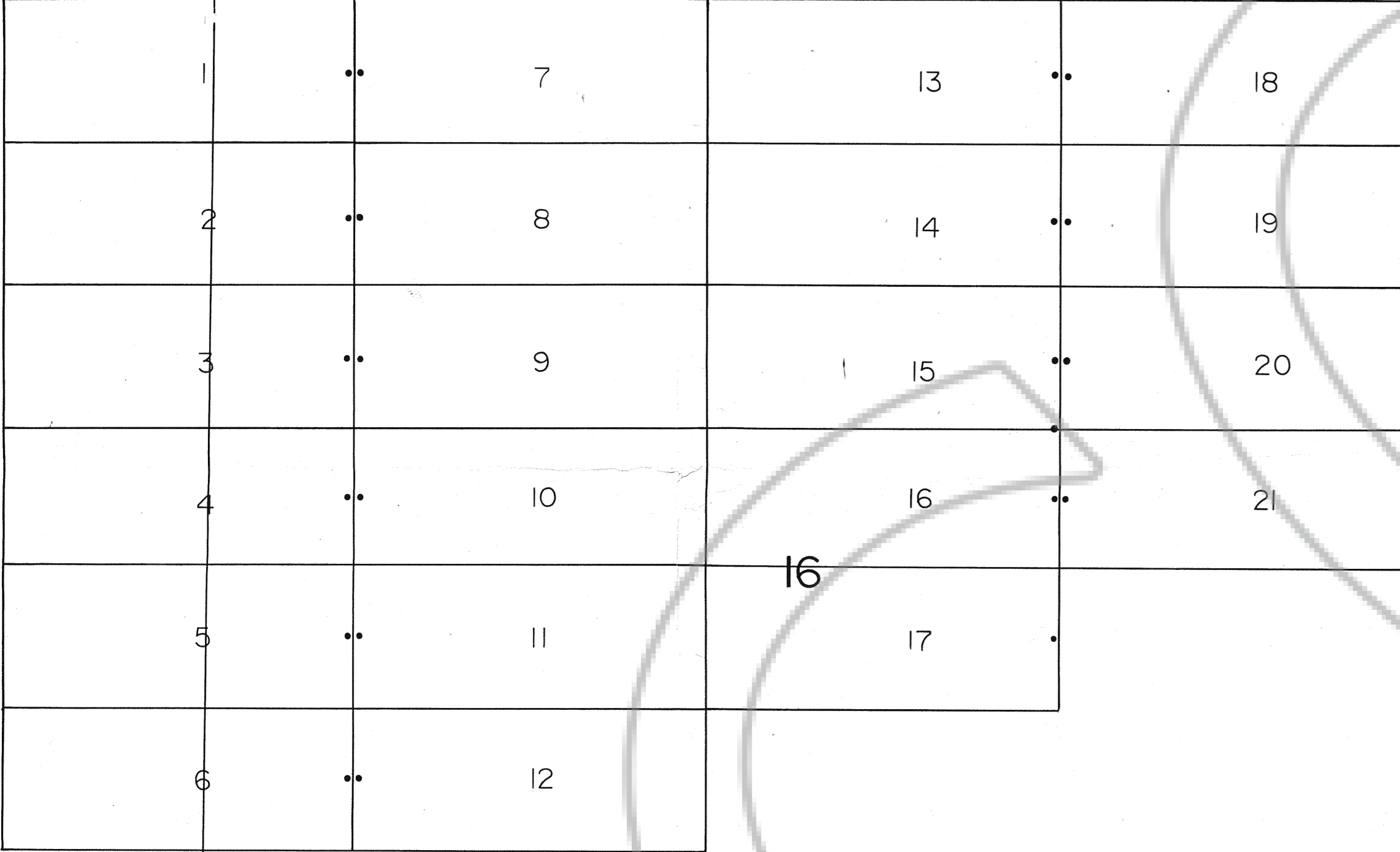
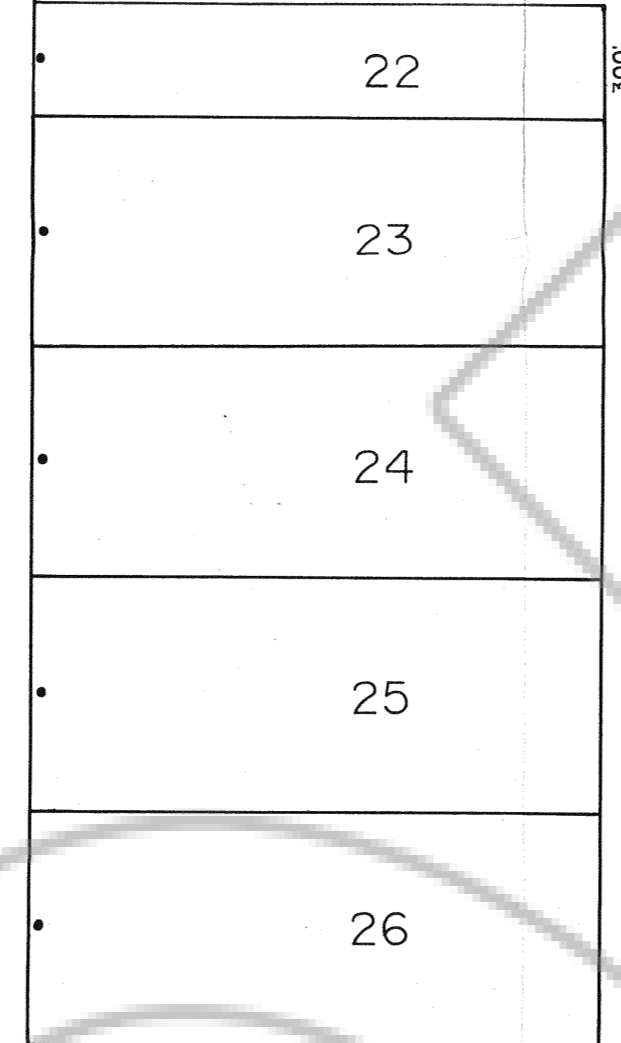
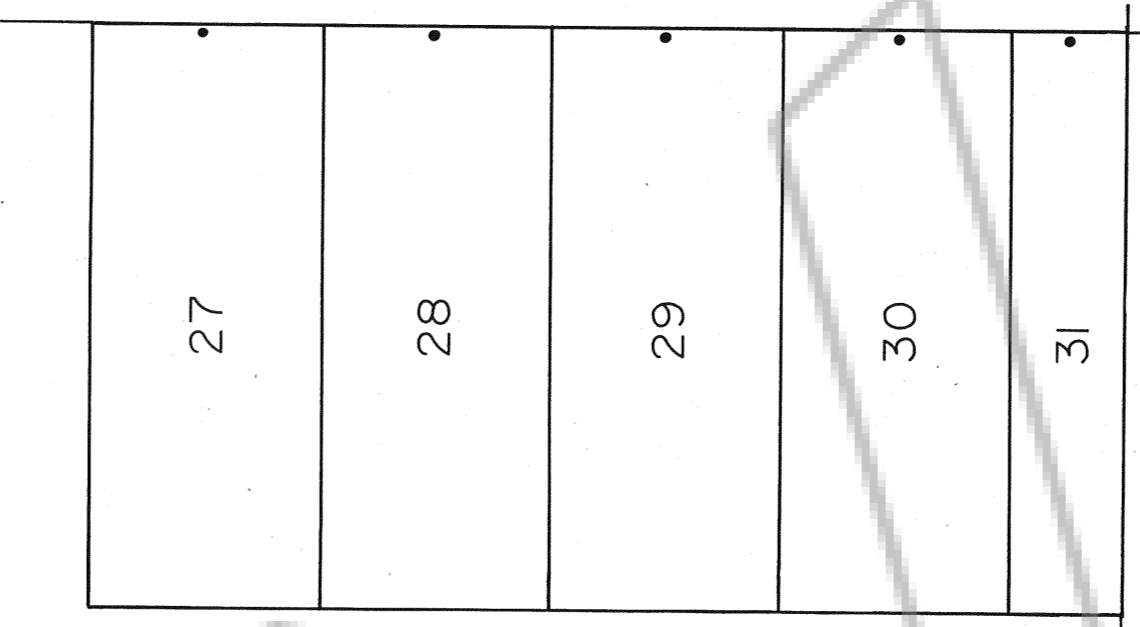


T34N

R51E

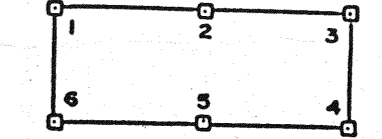
9



**SYMBOLS**

Location Monument - monuments are 20' from end centers.

Corners and side centers - all are 4" dia. (except where noted) x 4" tall PVC pipe. Corners are numbered as shown below:



**LOCATION DATE**

Claims were located between May 20 and May 22, 1989

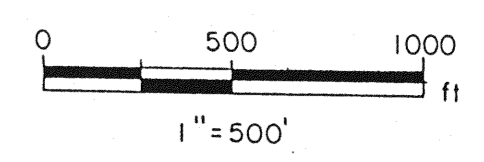
**CLAIMANT**

Claims were located on behalf of Noranda Exploration, Inc., P.O. Box 7176, Reno, NV. 89510.

**CLAIM SIZE**

All claims are 600' x 1500', except where noted

FILED AT THE REQUEST OF Noranda  
 on June 22 1989, at 35 mins, past 1p M.  
 RECORDS OF EUREKA COUNTY, NEVADA M. N. REBALEATI, Recorder  
 File No. 127569 Fee \$ 46.50



NORANDA EXPLORATION, INC.

Location Map of the  
 EM 1-31

Group of Lode Mining Claims

Situated primarily in  
 T34N, R51E  
 EUREKA COUNTY, NEVADA