

R50E
R51E
T34N

14

19

20

23

30

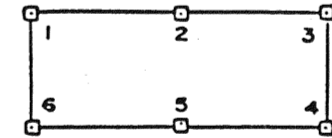
WP 217	WP 218	WP 219	WP 220	WP 221	WP 222	WP 223	WP 224	WP 225
WP 226	WP 227	WP 228	WP 229	WP 230	WP 231	WP 232	WP 233	WP 234
WP 235	WP 236	WP 237	WP 238	WP 239	WP 240	WP 241	WP 242	WP 243
WP 244	WP 245	WP 246	WP 247	WP 248				

WP 181	WP 182	WP 183	WP 184	WP 185	WP 186	WP 187	WP 188	WP 189
WP 190	WP 191	WP 192	WP 193	WP 194	WP 195	WP 196	WP 197	WP 198
WP 199	WP 200	WP 201	WP 202	WP 203	WP 204	WP 205	WP 206	WP 207
WP 208	WP 209	WP 210	WP 211	WP 212	WP 213	WP 214	WP 215	WP 216

SYMBOLS

Location Monument - monuments are 20' from end centers.

Corners and side centers - all are 4" dia. (except where noted) x 4" tall PVC pipe. Corners are numbered as shown below:



LOCATION DATE

Claims were located between May 20 and May 22, 1989

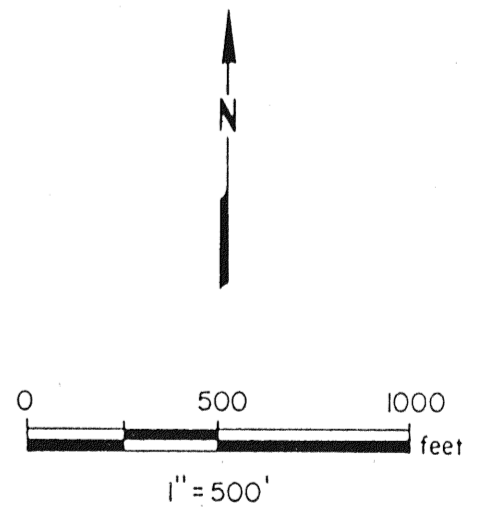
CLAIMANT

Claims were located on behalf of Noranda Exploration, Inc., P.O. Box 7176, Reno, NV. 89510.

CLAIM SIZE

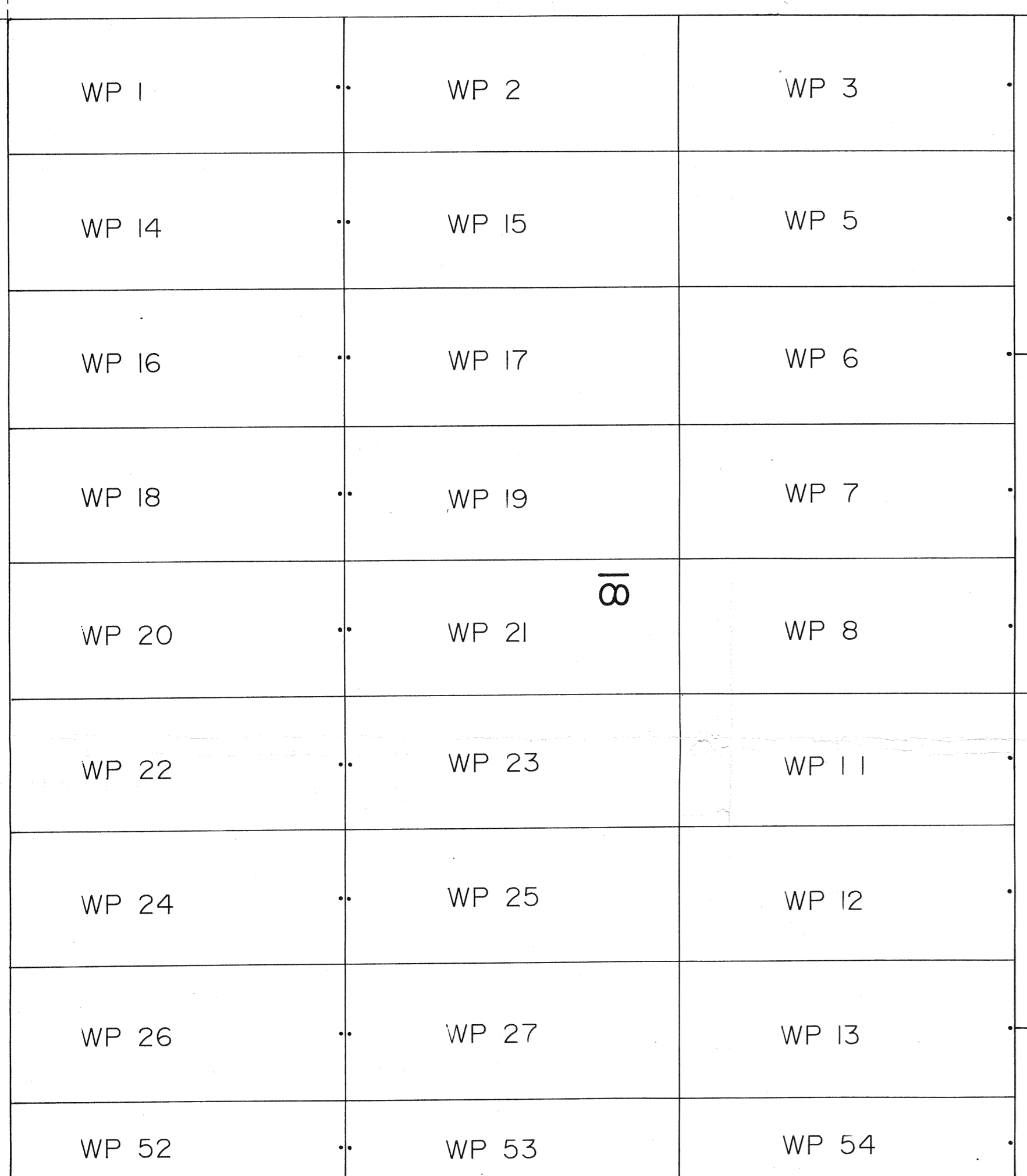
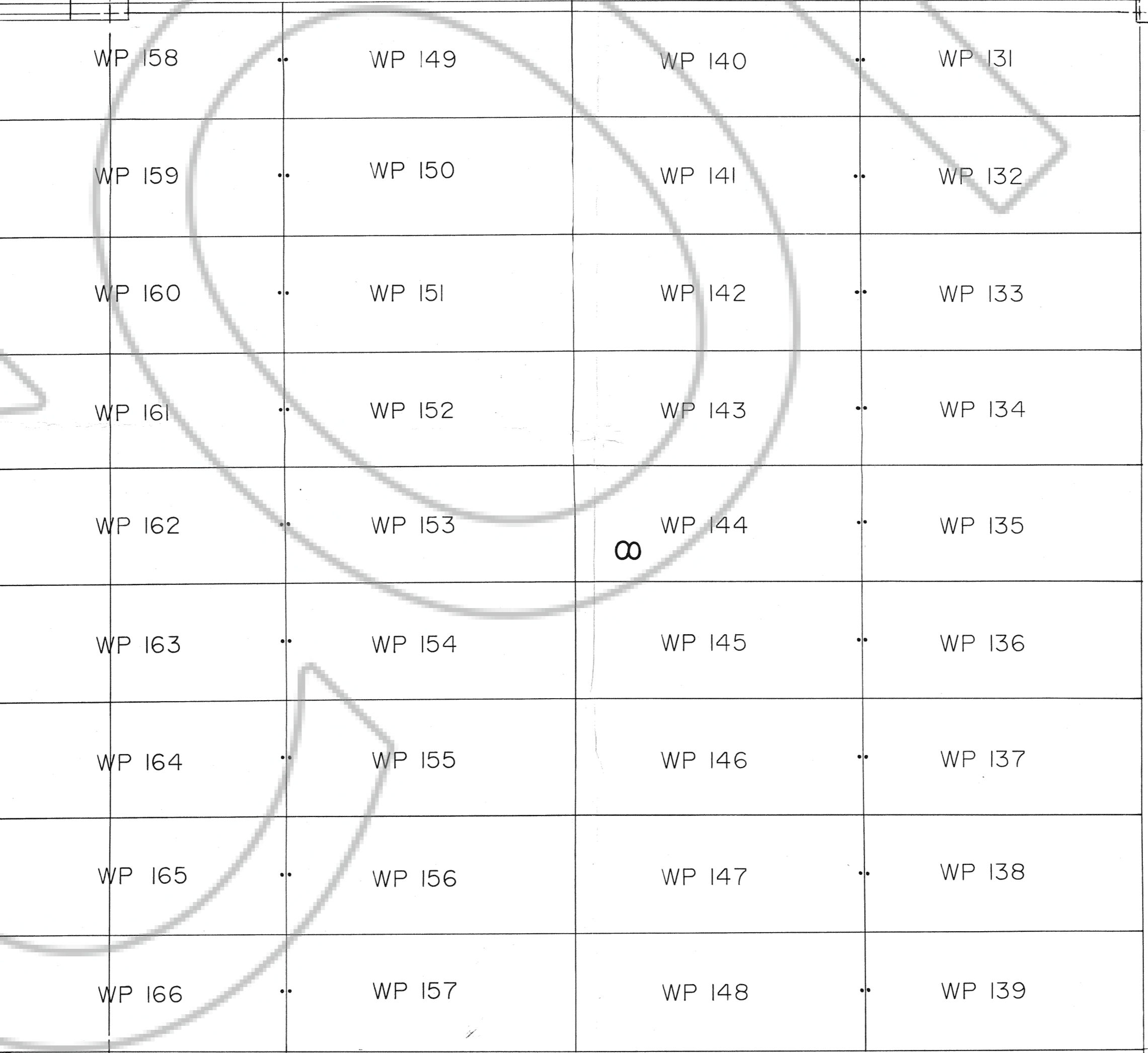
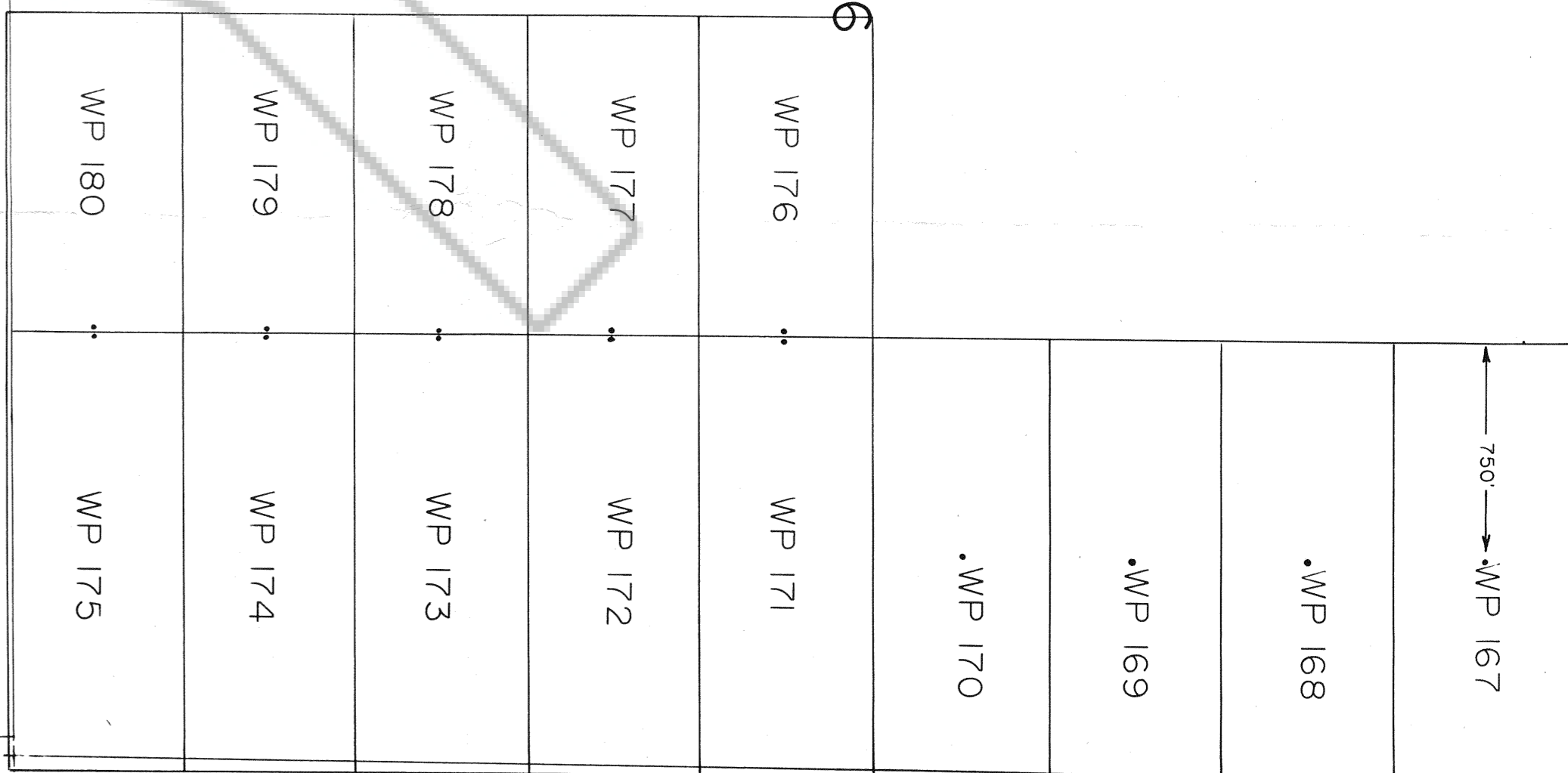
All claims are 600' x 1500', except where noted

FILED AT THE REQUEST OF Noranda
on June 22, 1989, at 37 mins. past 10-M.
RECORDS OF EUREKA COUNTY, NEVADA. H. N. REBALEATI, Recorder
File No. 127818 Fee \$ 1.20



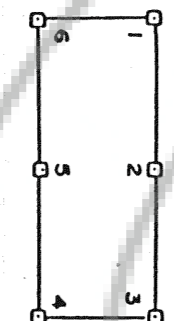
NORANDA EXPLORATION, INC.
Location Map of the
WP 181-248
Group of Lode Mining Claims
Situated primarily in
T34N, R51E
EUREKA COUNTY, NEVADA

T35N
T34N
R50E
R51E



SYMBOLS

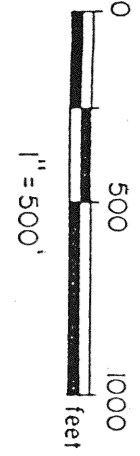
• Location Monument - monuments are 20' from end centers. Except where noted.
 ◻ Corners and side centers - all are 4" dia. (except where noted) x 4" tall PVC pipe. Corners are numbered as shown below:



FILED AT THE REQUEST OF Noranda
 on 19 day of July, 1989, at 11 mins, past
 the hands of 11:11 A.M. REBEKAH Register
 Claims were located between May 20 and 1989
 May 22, 1989

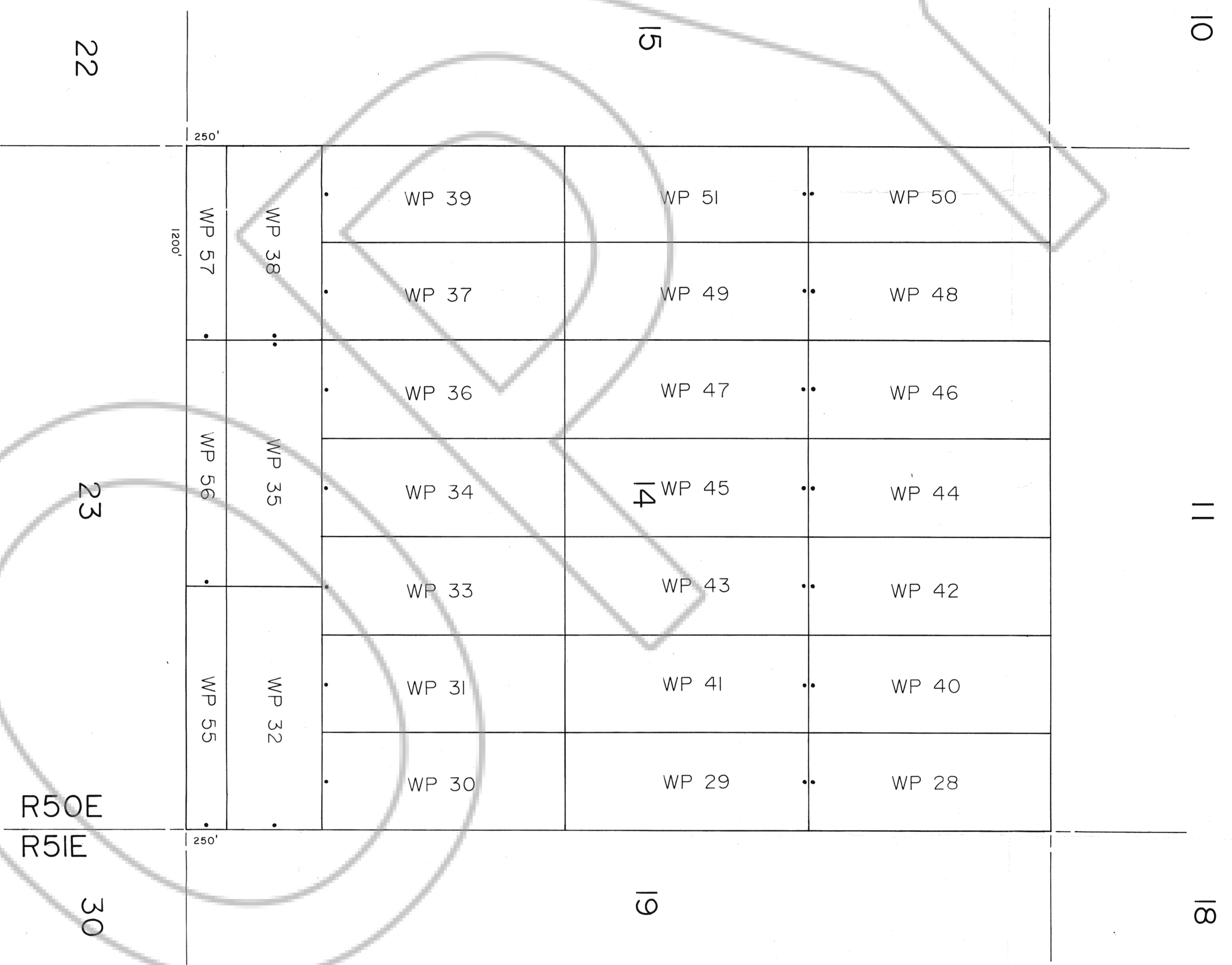
CLAIMANT
 Claims were located on behalf of
 Noranda Exploration, Inc., P.O. Box 7176,
 Reno, NV, 89510.

CLAIM SIZE
 All claims are 600' x 1500',
 except where noted

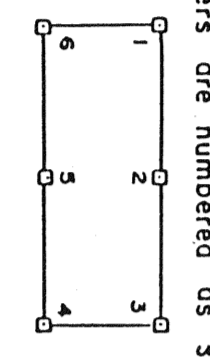


NORANDA EXPLORATION, INC.

Location Map of the
 WP 1-27, 52-54, 58-62, 131-180
 Group of Lode Mining Claims
 Situated primarily in
 T34N, R51E
 EUREKA COUNTY, NEVADA



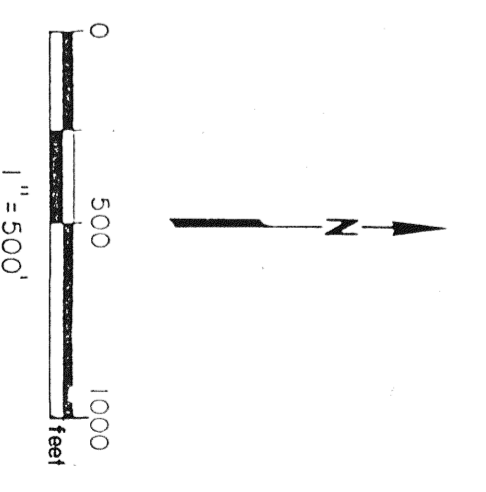
SYMBOLS
 Location Monument - monuments are 20' from end centers.
 Corners and side centers - all are 4" dia. (except where noted) x 4" tall PVC pipe. Corners are numbered as shown below:



LOCATION DATE
 Claims were located between May 20 and May 22, 1989

CLAIMANT
 Claims were located on behalf of Noranda Exploration, Inc., P.O. Box 7176, Reno, NV, 89510.

CLAIM SIZE
 All claims are 600' x 1500', except where noted.



FILED AT THE REQUEST OF *Noranda*
 on *June 22, 1989* at *57* mins, past *10* A.M.
 RECORDS OF EUREKA COUNTY, NEVADA. M. N. REBELENTI, Recorder
 File No. *127818* Fee \$ *40.50*

NORANDA EXPLORATION, INC.

Location Map of the

WP 28-51, 55-57

Group of Lode Mining Claims

Situated primarily in
 T84N, R50E
 EUREKA COUNTY, NEVADA

127818

