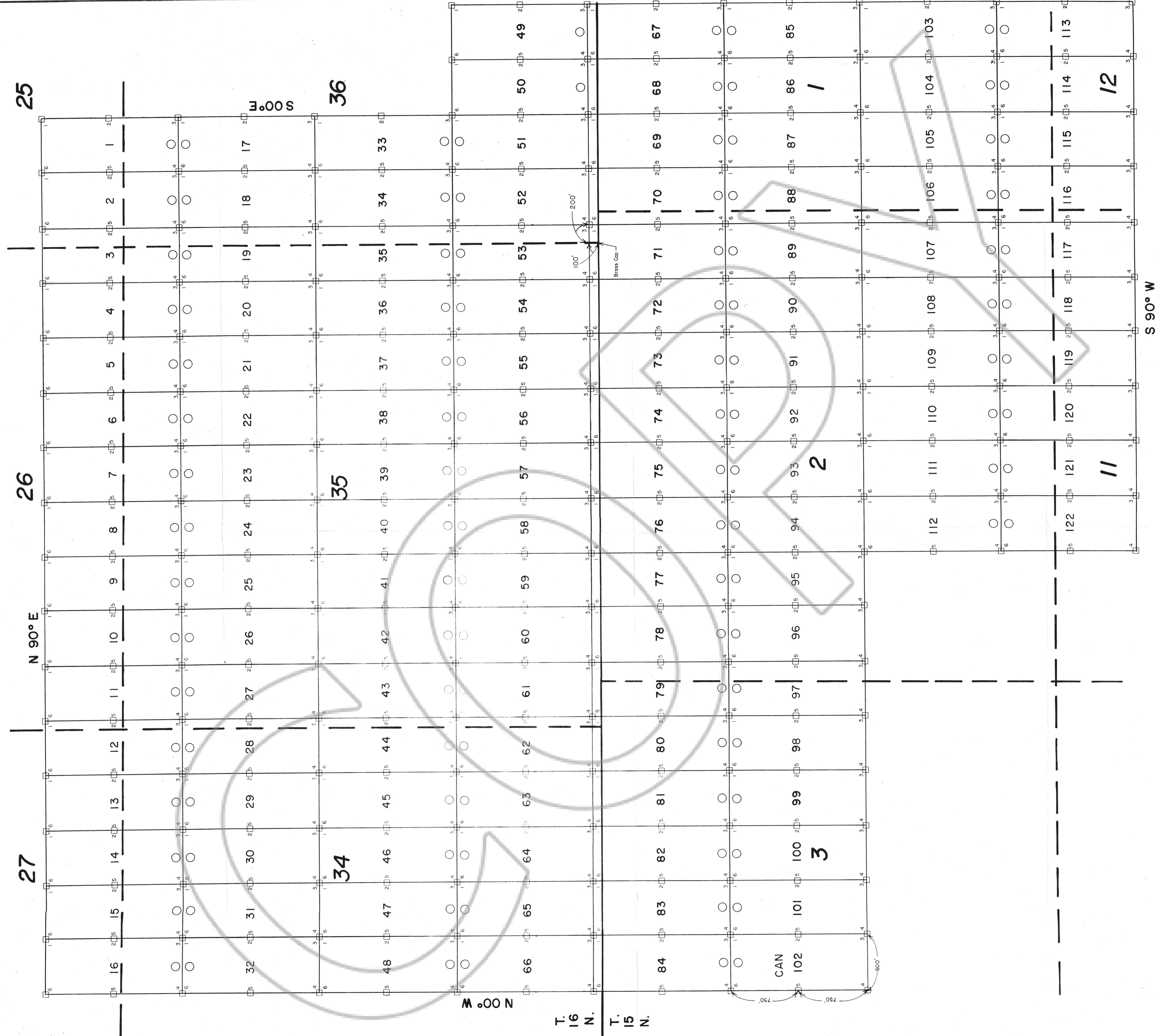


R. 52 E.

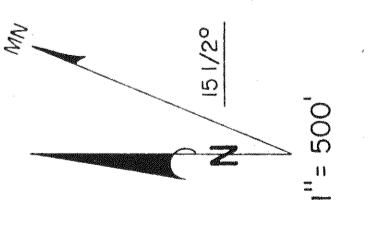


FILED AT THE REQUEST OF *Rocky Mt. Surveyors*
 ON June 23 1983 at Las Vegas
 RECORDS OF CLAY COUNTY, NEVADA M. N. REBALELL, REGISTER
 FILE NO. 127942 Fee \$ 1,830.00

127942
 MAP OF

LODE MINING CLAIMS
 WITHIN
 TOWNSHIPS 15 & 16 NORTH, RANGE 52 EAST
 CLAY COUNTY, NEVADA
 FOR
 ROCKY MOUNTAIN SURVEYORS
 1001 E. 10th St., Reno, Nevada 89502
 ALBUQUERQUE, NEW MEXICO 87191

--- PROTRACTED SECTION LINE
 ○ LOCATION MONUMENT
 CLAIMS ARE 600' x 1500' UNLESS
 OTHERWISE NOTED
 ALL LOCATION MONUMENTS ARE OFFSET
 10' FROM END CENTERS UNLESS
 OTHERWISE NOTED
 ALL LOCATION MONUMENTS, SIDE CENTERS
 AND CORNERS ARE MONUMENTED WITH
 3" DIA. PIPES IN LENGTH PVC PIPE



CAN CLAIMS 1"=12'
 LOCATED - APRIL 21, 1922, 1989