

6

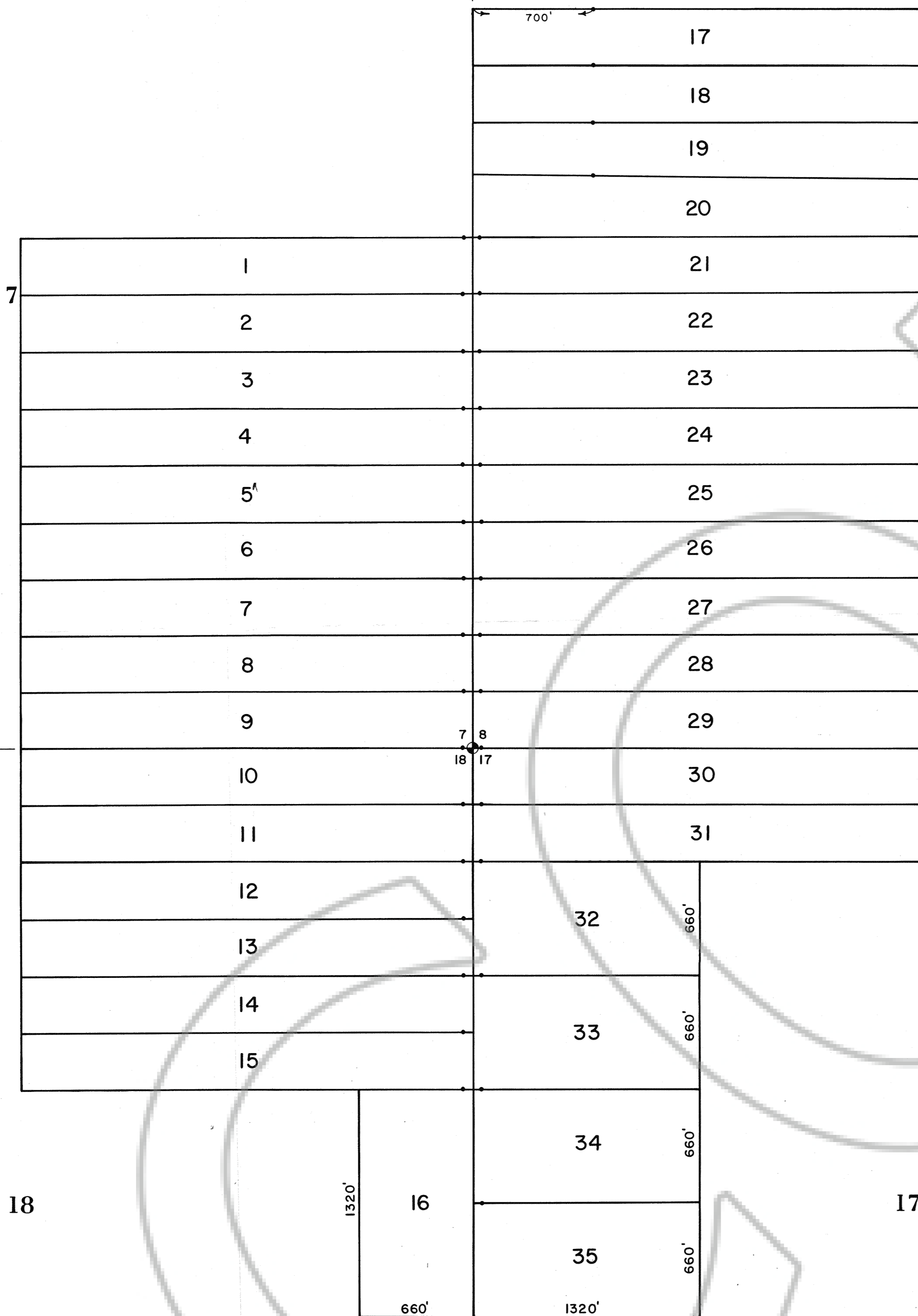
5

1 6
12 7

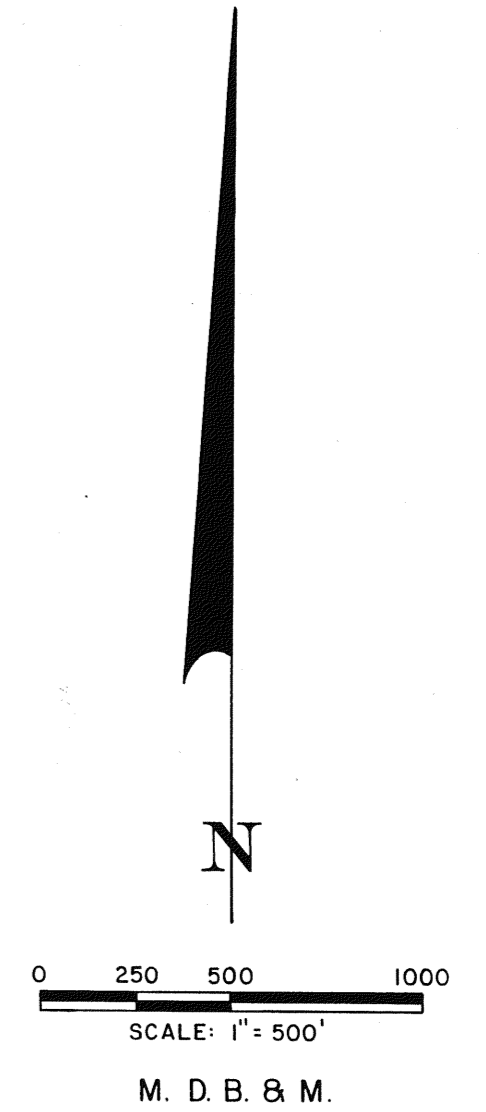
6 5
7 8

5 4
8 9

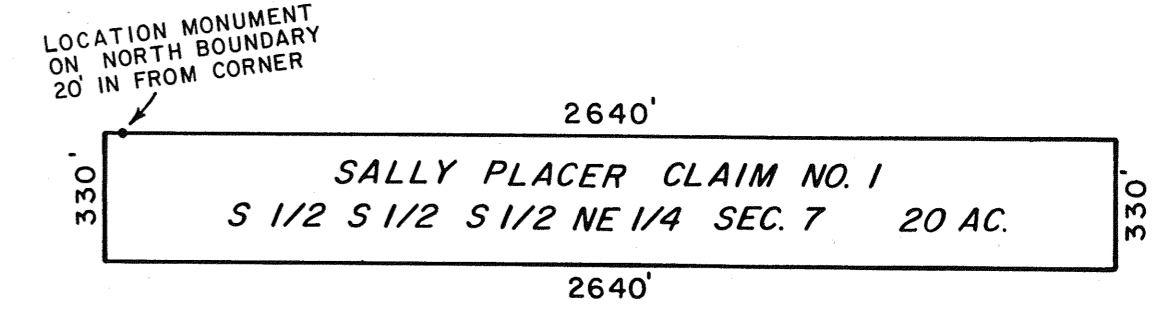
R 48 E



T 26 N



TYPICAL CLAIM



ALL CLAIMS ARE 2640' x 330' EXCEPT NO'S 16 & 32-35 WHICH ARE 1320' x 660'.
 ALL LOCATION MONUMENTS ARE ON NORTH BOUNDARY 20' IN FROM CORNER EXCEPT NO'S 17-20 WHICH ARE 700' EAST OF THE NORTHWEST CORNER.
 ALL LOCATION MONUMENTS ARE 3" x 4" PVC PIPE.
 ⊕ DENOTES A FOUND SECTION CORNER.
 SECTION LINES ARE PROJECTED.

LOCATION DATE:

JUNE 15, 1989 ----- NO'S 1-35

12 7
13 18

7 8
18 17

8 9
17 16

18

17

LANDER COUNTY
EUREKA COUNTY

FILED AT THE REQUEST OF *Steve Rowe*
 on *June 29*, 19*89*, at *29* mins, *pm*
 RECORDS OF EUREKA COUNTY, NEVADA M. N. REGALEAN, Recorder
 File No. 128089 Fee \$ 380.00

128089

**SALLY PLACER CLAIMS
 NO'S 1-35
 SECS. 7, 8, 17 & 18, T 26 N, R 48 E, M.D.B. & M.
 LANDER & EUREKA COUNTIES, NEVADA**

**OWNER:
 CORTEZ GOLD MINES
 CORTEZ, NEVADA 89821**