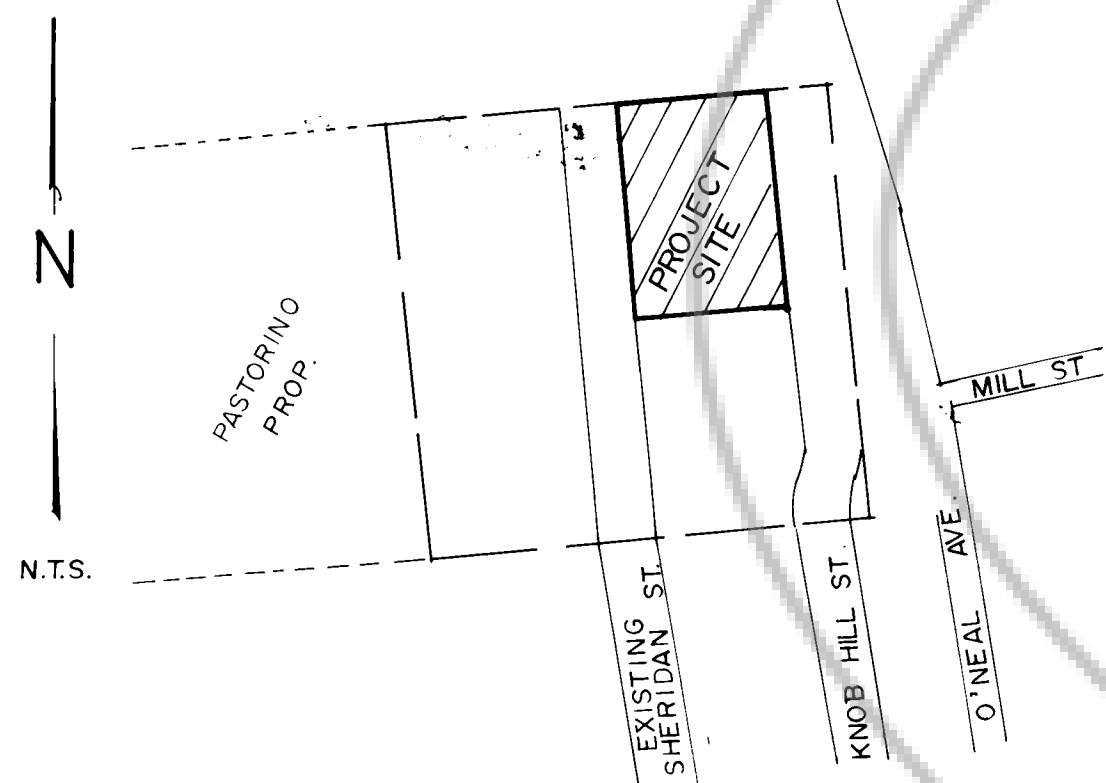


P.U.E. DETAIL



VICINITY MAP
N.T.S.

REFERENCE DOCUMENTS

- () A = BEARING AND DISTANCES AS PER PARCEL MAP FOR WILLIAM D. MILES FILE 117944 IN THE EUREKA COUNTY RECORDERS OFFICE
- () M = BEARING AND DISTANCES MEASURED FROM EXISTING SURVEY MONUMENTS

LEGEND :

- FND. 5/8" REBAR W/CAP R.L.S. 2357 OR AS NOTED
- SET SURVEY POINTS W/ 5/8" REBAR W/ TAG R.L.S. 7809

BASIS OF BEARING

S 84° 42' 50" W ON THE SOUTH LINE OF PARCELS "B" & "C" OF THE WILLIAM D. MILES PARCEL MAP FILE 117944 IN THE EUREKA COUNTY RECORDERS OFFICE.

APPROVAL EUREKA COUNTY COMMISSIONERS

ACCEPTANCE IS HEREBY MADE OF THE OFFER OF DEDICATION OF STREETS FOR PUBLIC USE BY EUREKA COUNTY PROVIDED THAT EUREKA COUNTY WILL NOT ACCEPT THESE STREETS INTO THE EUREKA COUNTY ROAD SYSTEM UNTIL THEY ARE IMPROVED ACCEPTABLE TO THE EUREKA COUNTY DEPARTMENT OF PUBLIC WORKS.

CHAIRMAN, EUREKA COUNTY COMMISSION

ATTEST, EUREKA COUNTY CLERK

APPROVAL EUREKA COUNTY COMMISSIONERS

AT A REGULAR MEETING OF THE BOARD OF COUNTY COMMISSIONERS OF EUREKA COUNTY, STATE OF NEVADA, HELD ON THE 22nd DAY OF April, 1989, THIS MAP WAS APPROVED PURSUANT TO N.R.S. CHAPTER 278.

CHAIRMAN, EUREKA COUNTY COMMISSION

ATTEST, EUREKA COUNTY CLERK

OWNERS CERTIFICATE

KNOW ALL MEN BY THESE PRESENTS, WILLIAM D. MILES, THE UNDERSIGNED, BEING THE OWNER OF A PORTION OF THE S.E. 1/4 OF THE N.E. 1/4 OF SECTION 14, T.19N., R.53E., M.D.B. & M., DO HEREBY CONSENT TO THE PREPARATION AND FILING OF THIS MAP, THAT THEY DO HEREBY OFFER WITHOUT RESERVATION FOR STREET AND PUBLIC UTILITY PURPOSES, ALL THE AREAS DELINEATED FOR SUCH PURPOSES ON THIS MAP. IN WITNESS WHEREOF, WE HAVE HERETO SET OUR HANDS THE 2nd DAY OF April, 1989.

WILLIAM D. MILES

SURVEYORS CERTIFICATE

I, BARRY A. FITZPATRICK, A REGISTERED LAND SURVEYOR IN THE STATE OF NEVADA, CERTIFY THAT :

- (1.) THIS IS A TRUE AND ACCURATE REPRESENTATION OF THE LANDS SURVEYED UNDER MY SUPERVISION AT THE INSTANCE OF WILLIAM D. MILES
- (2.) THE LANDS SURVEYED LIE WITHIN SEC. 14, T. 19 N., R. 53 E., M.D.B. & M. AND THE SURVEY WAS COMPLETED ON APRIL 2, 1989
- (3.) THIS PLAT COMPLIES WITH THE APPLICABLE STATE STATUTES AND ANY LOCAL ORDINANCES.
- (4.) THE MONUMENTS WILL BE OF THE CHARACTER SHOWN AND OCCUPY THE POSITIONS INDICATED.

BARRY A. FITZPATRICK, R.L.S. 7809

ENGINEERS CERTIFICATE

I, _____ CERTIFY THAT I HAVE EXAMINED THIS MAP CONSISTING OF ONE (1) SHEET, AND THAT ALL PROVISIONS AND ORDINANCES APPLICABLE HAVE BEEN COMPLIED WITH AND THAT I AM SATISFIED THAT THIS MAP IS TECHNICALLY CORRECT. A PROPER DEPOSIT OR PERFORMANCE BOND HAS BEEN POSTED GUARANTEEING THE SETTING OF THE MONUMENTS SHOWN ON OR BEFORE

COUNTY ENGINEER

DATE

UTILITY COMPANIES

THIS FINAL MAP AND THE EASEMENTS SHOWN ON THIS PLAT HAVE BEEN CHECKED AND APPROVED BY THE UNDERSIGNED.

NEVADA BELL

DATE

MT. WHEELER POWER INC.

DATE

APPROVAL EUREKA COUNTY PLANNING COMMISSION

AT A REGULAR MEETING OF THE EUREKA COUNTY PLANNING COMMISSION, STATE OF NEVADA, HELD ON THE 14th DAY OF April, 1989, THIS MAP WAS APPROVED PURSUANT TO N.R.S. CHAPTER 278.

CHAIRMAN, EUREKA COUNTY PLANNING COMMISSION

ATTEST, EUREKA COUNTY CLERK

RECORDERS CERTIFICATE

FILED FOR RECORD AT THE REQUEST OF David Pastorino ON THE 11th DAY OF July, 1989 AT 30 MINUTES PAST 9 A.M. O'CLOCK M., IN THE OFFICIAL RECORDS OF EUREKA COUNTY, NEVADA.

EUREKA COUNTY RECORDER

PARCEL MAP

FOR

WILLIAM D. MILES
A DIVISION OF PARCEL D

LOCATED WITHIN THE S.E. 1/4 OF THE N.E. 1/4 OF SECTION 14, T. 19 N., R. 53 E., M.D.B. & M. EUREKA TOWNSHIP, EUREKA COUNTY, NEVADA

LUMOS & ASSOCIATES, INC.
141 INDUSTRIAL WAY
FALLON, NEVADA 89406
(702) 423-2188

DRAWN BY: SHELDON QUINN
DATE: APRIL, 1989
Scale: 1"=40'
Job No.: