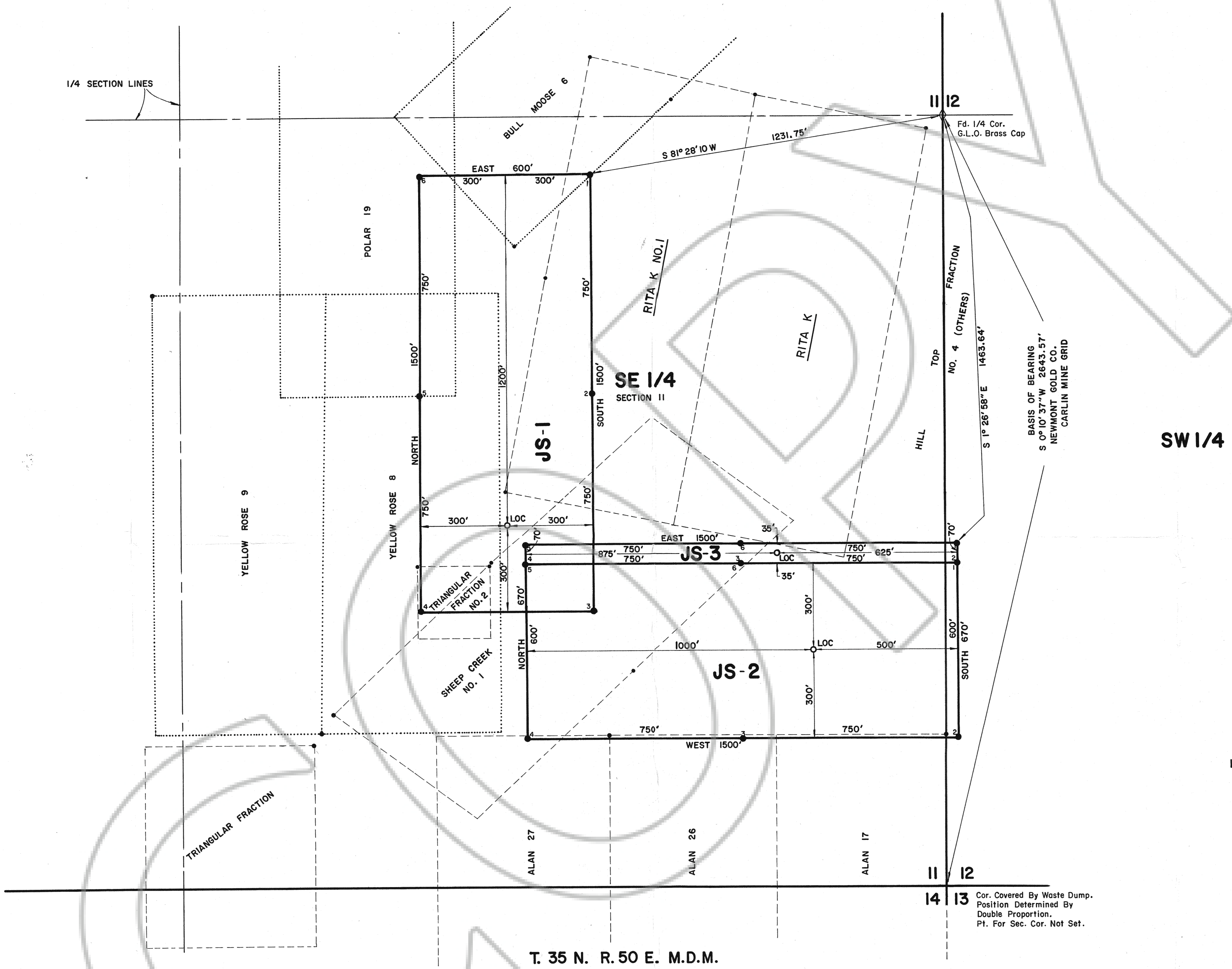


SCALE: 1" = 200'
 EUREKA COUNTY
 UNKNOWN MINING DISTRICT



FILED AT THE REQUEST OF *Newmont Exploration Limited*
 on *July 14, 1989*, at *3:22* mins, *11:11* A.M.
 RECORDS OF EUREKA COUNTY, NEVADA H. N. REBALEATI, Recorder
 File No. *128385* Fee \$ *45.00*

LOCATOR: NEWMONT EXPLORATION, LTD.
 P.O. BOX 368
 ELKO, NEVADA 89801

LOCATION DATES: YEAR 1989
 JUNE 8 - JS 1, JS 2 & JS 3

MONUMENTATION: COMPLETED 8 JUNE 1989

LEGEND:

- 3" PVC LOCATION MONUMENT WITH FILM CANISTER CONTAINING LOCATION NOTICE
- 3" PVC CLAIM CORNER WITH METAL TAG INSCRIBED WITH CORNER MARKINGS
- ◇ FOUND BLM BRASS CAP 1/4 SECTION CORNER
- FOUND EXISTING CLAIM CORNERS
- APPROX. CLAIM LINES - NEWMONT CONTROLLED
- APPROX. CLAIM LINES - OTHERS CONTROLLED

T. 35 N. R. 50 E. M.D.M.

MAP
JS 1 - JS 3 LODE MINING CLAIMS
 SITUATED IN SECTIONS 11 & 12 T. 35 N., R. 50 E., M.D.B. & M.
 EUREKA COUNTY, NEVADA
 FOR
NEWMONT EXPLORATION, LTD.
 P.O. BOX 368
 ELKO, NEVADA 89801

DRN.: J. PISONI APPR.:
 JOB NO.: 3010.007 DATE: 6-19-89

NO.	BY DATE	DESCRIPTION	CHK'D APP'D

CHILTON Engineering & Surveying, Ltd. Dwg. No. 89033
 421 Court Street Elko, Nevada 89801 (702) 738-2121