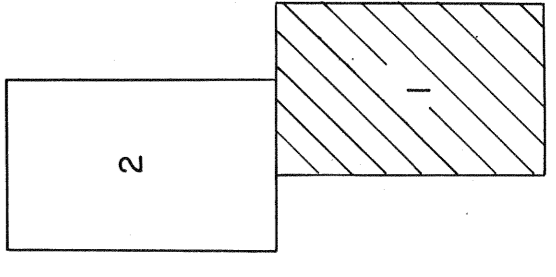


MAP INDEX



Sheet 1 of 2

**LOCATOR**  
 RIO ALGOM EXPLORATION INC.  
 245 East Liberty St., No. 200  
 Reno, Nevada 89501

**LOCATION DATES**  
 5/31/89 DGC 1-26  
 6/1/89 " 53-55, 58-61  
 6/2/89 " 27-43, 56, 57  
 6/3/89 " 44-51

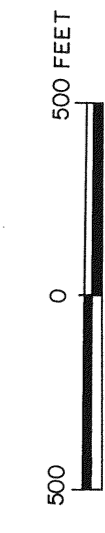
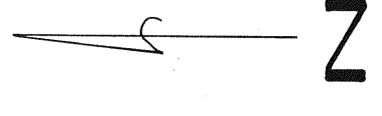
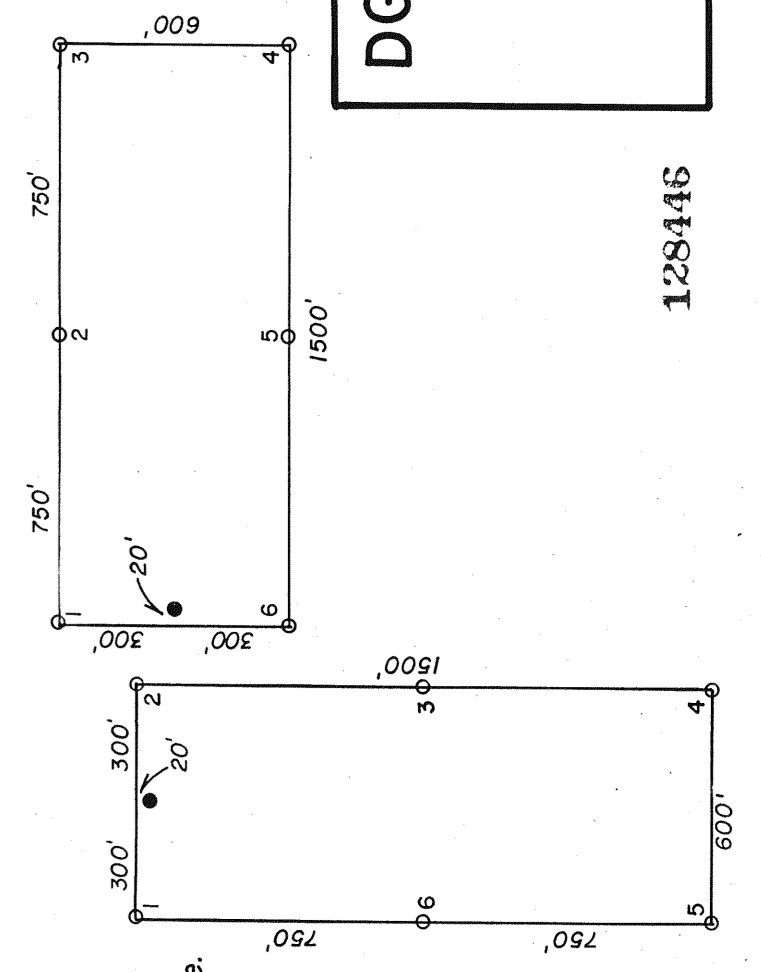
**NOTES**

All claims measure 600'x1500'.  
 All monuments are 3"x5" white PVC pipe.  
 All location monuments shown as "•" are set 20' into claim except DGC 27-36, 38, 40 & 42 are set 50' into claim & DGC 53-55 & 59-61 are set 750' into claim.

**TIE**

The NE corner of DGC 25 is 1500' due South of the NW corner of section 19, T20N, R53E.

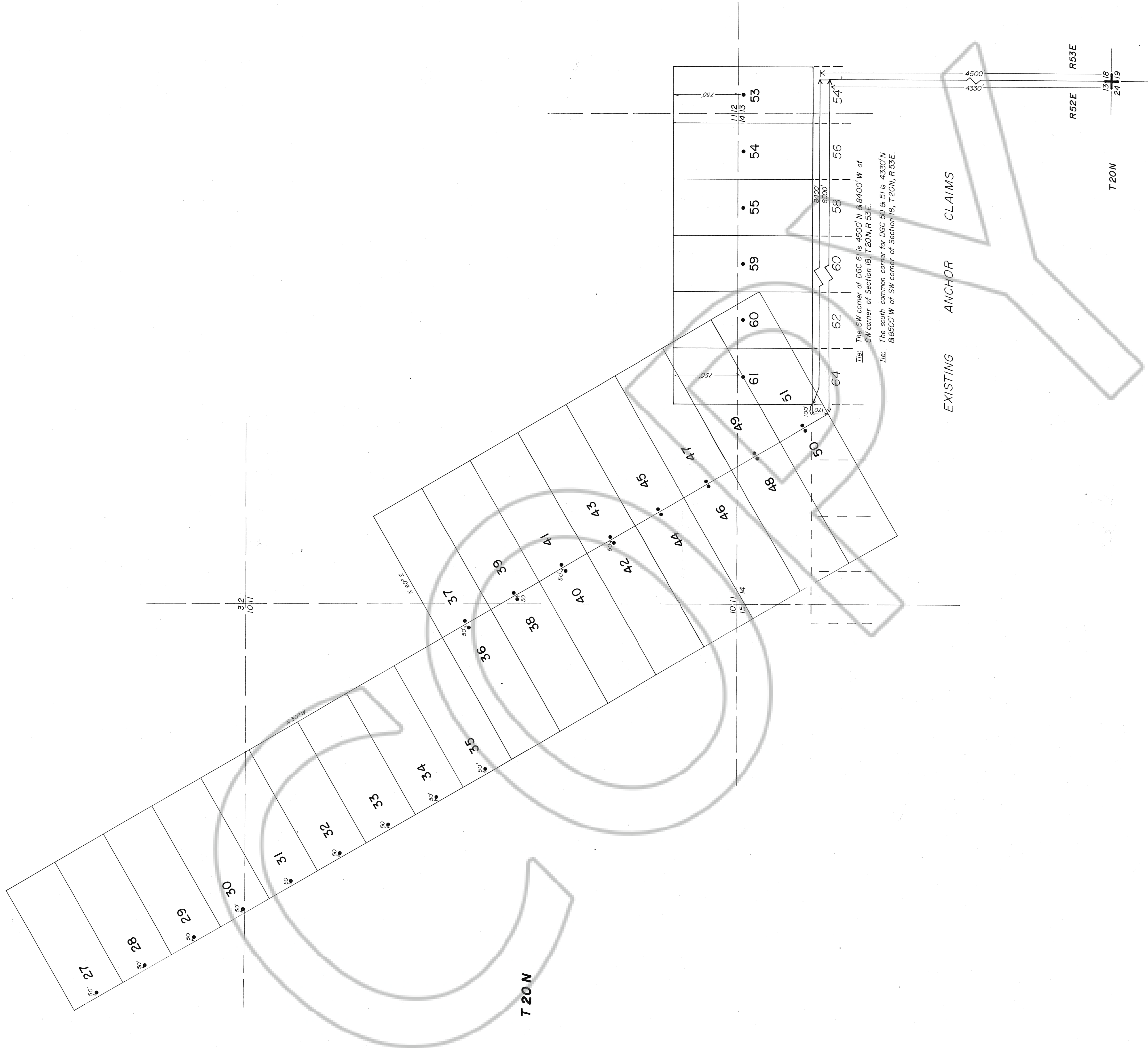
**TYPICAL CLAIMS**



FILED AT THE REQUEST OF Rio Algom Exploration Inc.  
 on 06/11/89 at 11:12 a.m. Dist. 32 M.  
 RECORDERS OFFICE, EUREKA COUNTY, NEVADA, M.N. REBELETTI, RECORDER  
 File No. 128446 Fee \$ 435.00

**DGC (1-51, 53-61) LODE MINING CLAIMS**  
 Sections 3, 10, 15, 23 & 24  
 T20N, R52E  
 Eureka County, Nevada

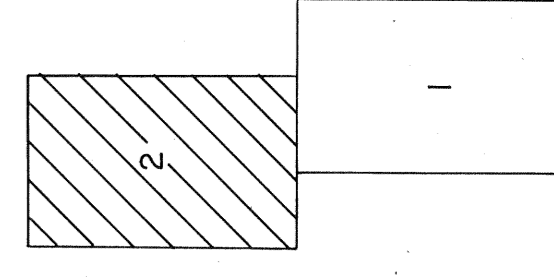
R 52E



*Tit:* The SW corner of DGC 61 is 4500' N & 8400' W of SW corner of Section 18, T 20N, R 53E.  
*Tit:* The south common corner for DGC 50 & 51 is 4330' N & 8500' W of SW corner of Section 16, T 20N, R 53E.

EXISTING ANCHOR CLAIMS

MAP INDEX



Sheet 2 of 2

LOCATOR

RIO ALGOM EXPLORATION INC.  
 245 East Liberty St., No. 200  
 Reno, Nevada 89501

LOCATION DATES

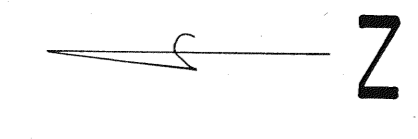
5/31/89 DGC 1-26  
 6/1/89 " 53-55, 58-61  
 6/2/89 " 27-43, 56, 57  
 6/3/89 " 44-51

NOTES

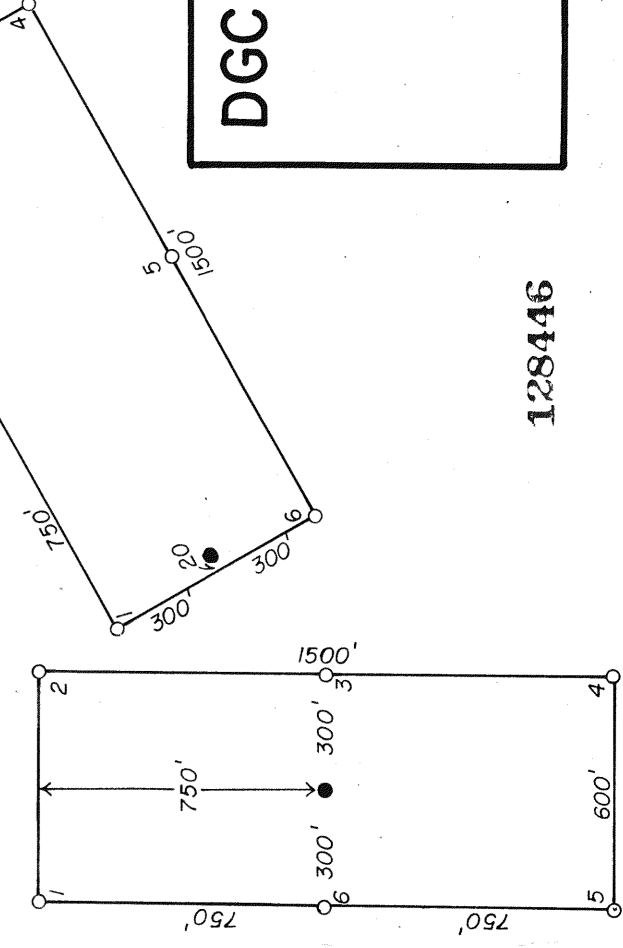
All claims measure 600' x 1500'.  
 All monuments are 3' x 5' white PVC pipe.  
 All location monuments shown as "•" are set 20' into claim except: DGC 27-36, 38, 40 & 42 are set 50' into claim & DGC 53-55 & 59-61 are set 750' into claim.  
 Unsurveyed; section lines are approximate.

TITLE

The SW corner of DGC 61 is 4500' N and 8400' W of SW corner of section 18, T 20N, R 53E.  
 The south common corner for DGC 50 & 51 is N 4330' and W 8500' from the SW corner of section 16, T 20N, R 53E.



TYPICAL CLAIMS



FILED AT THE REQUEST OF: *Rio Algom Exploration Inc.*  
 on *July 14, 1989*, at *11:17 AM* Page *2* of *2*  
 RECORDS OF EUREKA COUNTY, NEVADA, IN PUBLIC UTILITY DIVISION  
 File No. **128446** Fee \$ *27.50*

**DGC (1-51, 53-61) LODE MINING CLAIMS**  
 Sections 3, 10, 15, 23 & 24  
 T 20N, R 52E  
 Eureka County, Nevada

prepared by: T and T EXPLORATION SERVICES INC.

128446