

O.P. & Pete LODE CLAIMS.
T 22 N; R 52 E

MINERAL HILL AREA

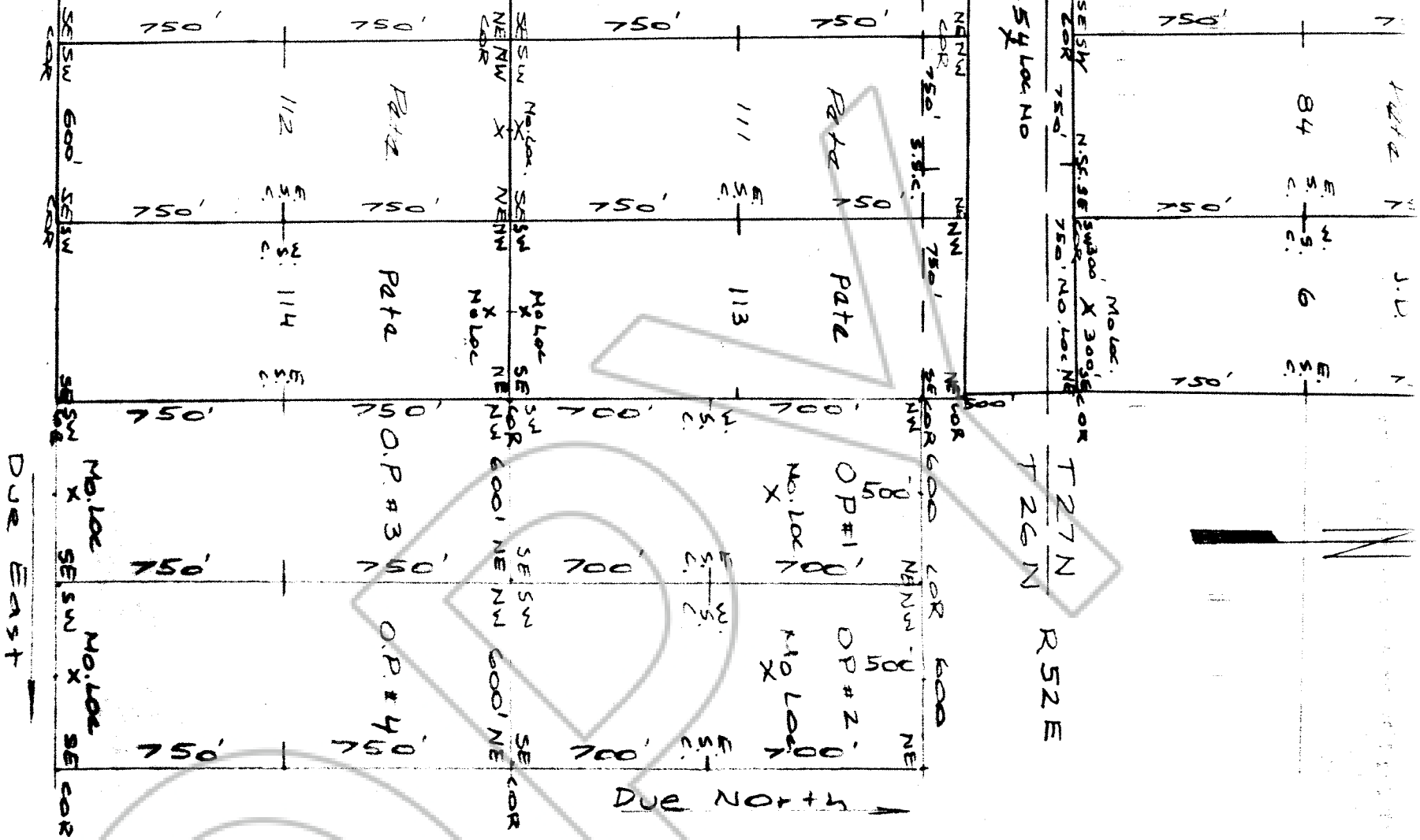
COUNTY: EUREKA STATE: NEVADA

SCALE 0 400' 800'

DATE 6-7-89 BY: P. WILKINSON SHEET 1

FILED AT THE REQUEST OF Peter W. Jackson
 on July 19 19 89, at 47 mins, past 9 M.
 RECORDS OF EUREKA COUNTY, NEVADA M. N. REBALEATI, Recorder
 File No. 128481 Fee \$ 150

128481



T 27 N
 T 26 N
 R 52 E

Sheet #2

O.P. Group Lot 1e

T 26 42 27 N, R 52 E

EUR EKA CO. NEV

Scale 1"=500' 6-25-89

FILED AT THE REQUEST OF Peter W. Deegan
 on July 19, 19 89, at 47 mins, 90 sec
 RECORDS OF CLERK COUNTY, NEVADA M. N. REBELETTI, RECORDER
 Fee \$ 150
 The No. 128181

128181