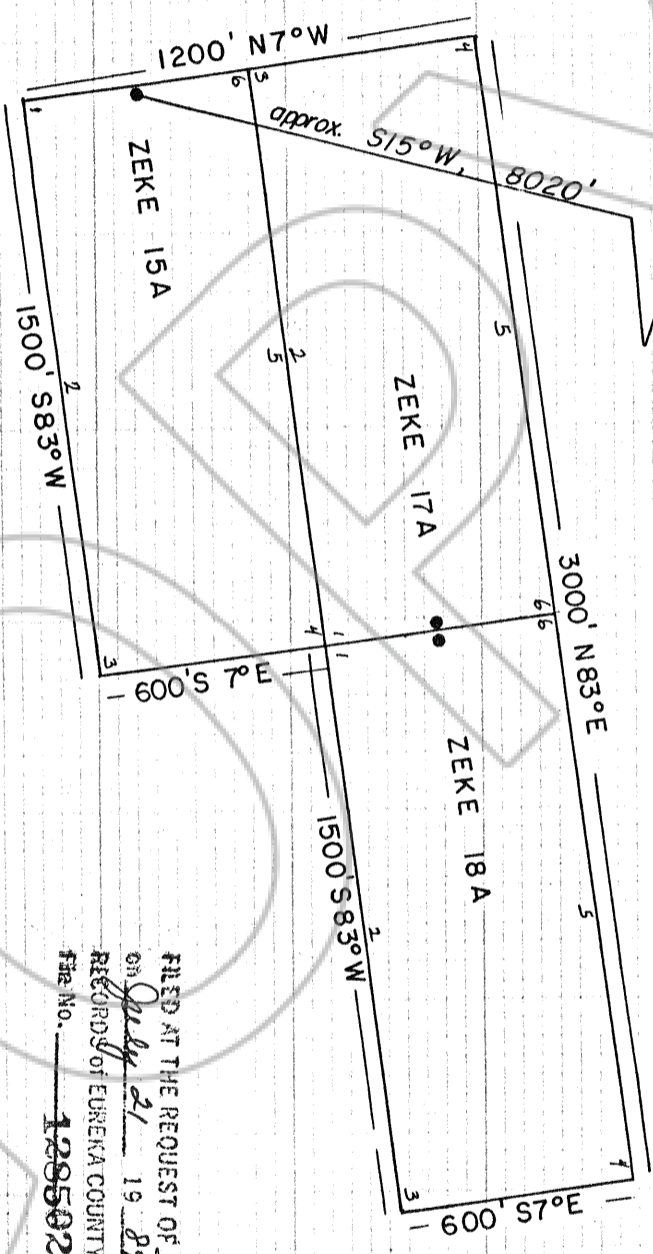


USLM # 228 (land monument - 6" x 6" x 75" wooden post
in 3' diameter rock mound)



FILED AT THE REQUEST OF J. Prochnau & Co.
on July 21, 19 89, at 26 mins, Dist 10 A.M.
RECORDS OF EUREKA COUNTY, NEVADA M. N. REBALEATI, Rec. Cl.
File No. 128502 Fee \$ 45.00

ZEKE LODE CLAIMS

Located by: J. Prochnau & Co.
127 Cheney St.
Reno, Nevada 89501

Location Date: ZEKE 15A, 17A, 18A - April 27, 1989

Location: Section 6, T26N, R49E MDM, Buckhorn Mining Dist
Eureka County, Nevada

Tie: The discovery monument of ZEKE 15A is located approx
S15°W, 8020' from U.S. Land Monument #228

128502

Discovery monuments are located 20' from end lines

All claims measure 600' x 1500'