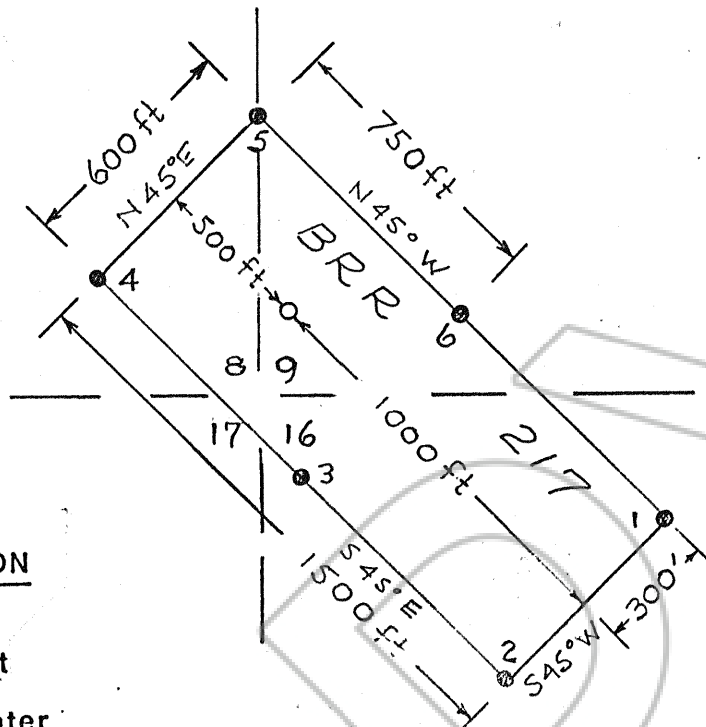


R 51 E

T 20 N



EXPLANATION

- Location monument
- Corner or side center

Note: all monuments are 3" or 4" PVC plastic.
Posts are at least 4 1/2' long.

The BRR 217 Lode Mining Claim is situated in portions of Sections 8, 9, 16, and 17, T. 20 N., R. 51 E., Mt. Diablo Base and Meridian, Lone Mountain Mining District, Eureka County, Nevada.

The above claim is tied to the common section corner of Sections 27, 28, 33, and 34, T. 21 N., R. 51 E., MDB&M. This map is filed with and made a part of the Location Certificate of said claim

Location Date: BRR 217 was located on September 10, 1988 and amended on June 26, 1989.

LOCATOR

BRR Resources, Inc.
P.O. Box 796
Battle Mountain, Nevada 89820

BRR Resources

MAP OF BRR No. 217 AMENDED
LODE MINING CLAIM

WITHIN SECTIONS 8, 9, 16, and 17,
Mt. DIABLO BASE and MERIDIAN

Lone Mountain Mining District,
Eureka County, Nevada

DATE: AUGUST 7, 1989

SCALE: 1 in. = 500 ft.

128948

FILED AT THE REQUEST OF BRR Resources
on Aug 18 1989, at 36 mins, past 4:00 M.
RECORDS OF EUREKA COUNTY, NEVADA M. N. REBALEATI, Recorder
File No. 128948 Fee \$ 15.00