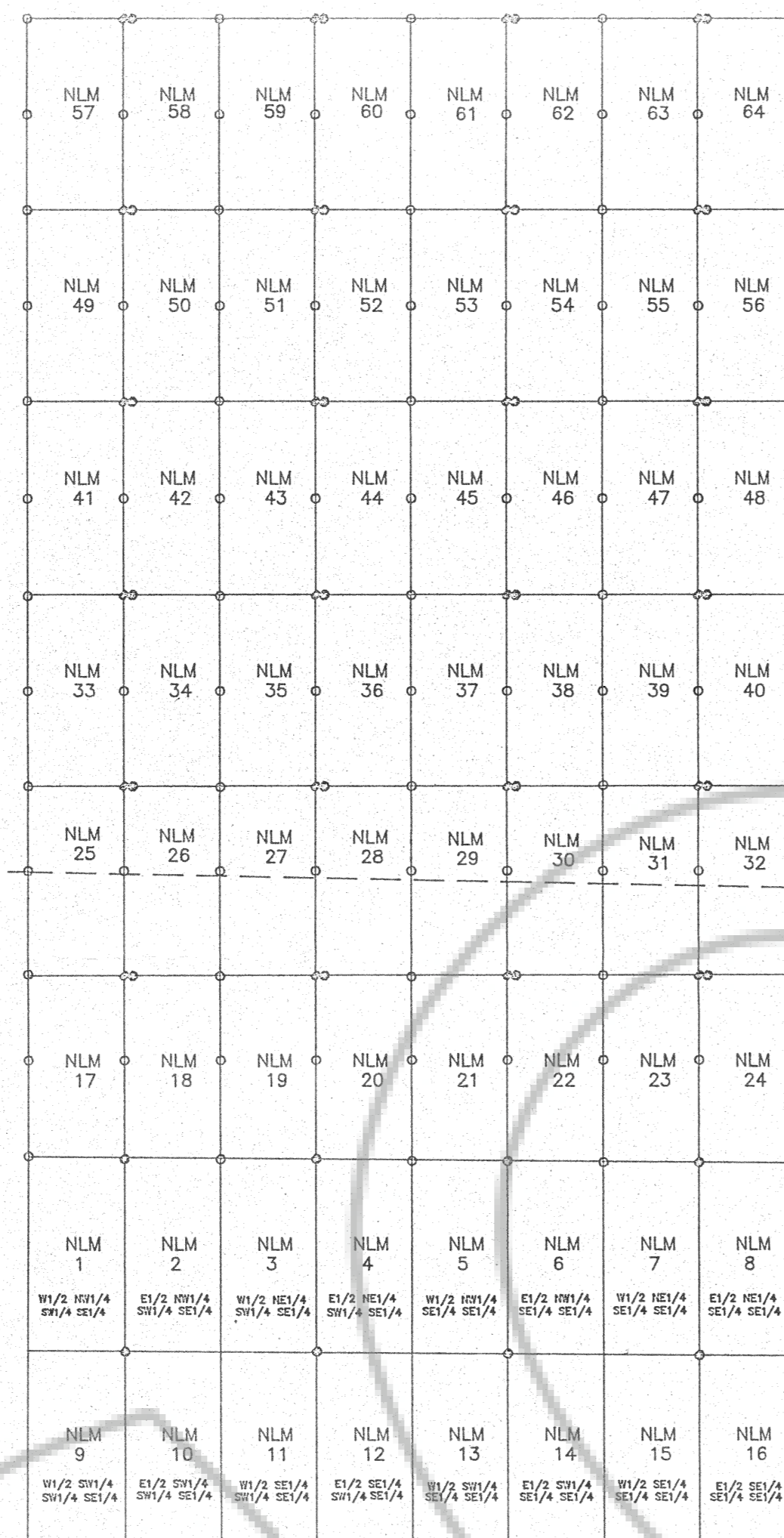


R 53 E



NEVADA LIMESTONE MILLSITES  
1-64

LOCATED FOR

ECHO BAY EXPLORATION, INC.

FOR

ECHO BAY EXPLORATION, INC.

5250 NEIL ROAD

SUITE 300

RENO, NEVADA 89502

LOCATED IN

SECTION 6

TOWNSHIP 19 NORTH, RANGE 53 EAST

AND

SECTION 31

TOWNSHIP 20 NORTH, RANGE 53 EAST

MOUNT DIABLO BASE AND MERIDIAN  
EUREKA COUNTY, NEVADA



TIE:

THE SOUTHEAST CORNER OF N.L.M. 16  
IS TIED TO AND COMMON WITH  
THE SOUTHEAST CORNER OF SECTION 6  
TOWNSHIP 19 NORTH, RANGE 53 EAST  
MOUNT DIABLO BASE AND MERIDIAN

LOCATION DATES:

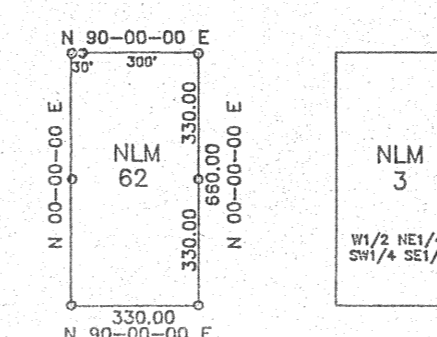
N.L.M. 1 - 40 LOCATED JULY 15, 1989

N.L.M. 41 - 64 LOCATED JULY 16, 1989

NOTES:

MONUMENTS ARE 3" x 4' DURABLE PLASTIC PIPE  
SET 1' IN THE GROUND

TYPICAL MILLSITE



MAP OF

NEVADA LIMESTONE MILLSITES

FILED AT THE REQUEST OF *Echo Bay Exploration*  
ON *Aug 28* 19 *89*, BY *28* HARRIS, DIST. *110* M.  
RECORDS OF EUREKA COUNTY, NEVADA N. H. BEALE, Recorder  
File No. *960* Fee \$ *960*

129241

ECHO BAY EXPLORATION	
DRAFTED	DATE
KAM	AUGUST 1989
REVISED	DATE

NEVADA LIMESTONE MILLSITES

1-64