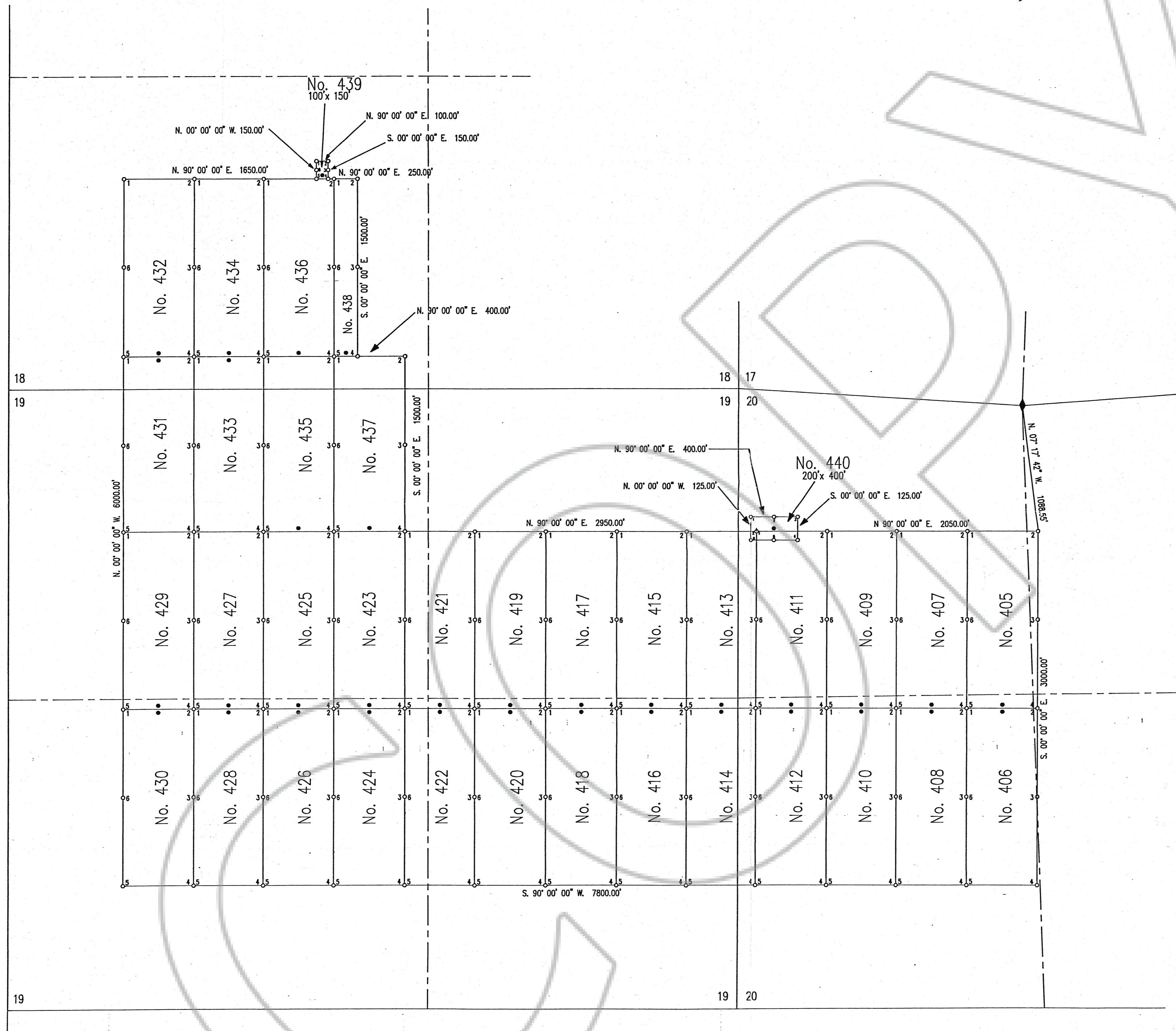


T. 26 N., R. 49 E., M.D.B. & M.



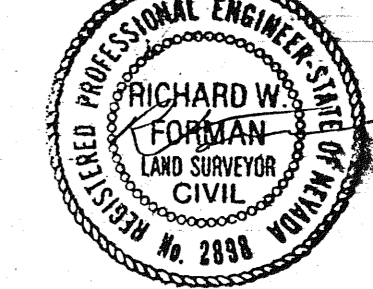
NOTES:

- At all Corners, Side Centers and Discovery Monuments are 3" diameter x 5' long posts with aluminum tags denoting the appropriate corners.
- = Corner and Side Center posts.
● = Discovery Monuments
- These claims are located by: Santa Fe Pacific Mining, Inc.
250 South Rock Blvd., Suite 100
Reno, Nevada 89502
- BS Nos. 405 thru 430 were located on June 3rd, 1989.
BS Nos. 431,432,433,434,435 were located on June 22nd, 1989.
BS Nos. 436,438 were located on July 11th, 1989.
BS Nos. 437, 439, 440 were located on August 15th, 1989.
- There is a total of 36 claims.

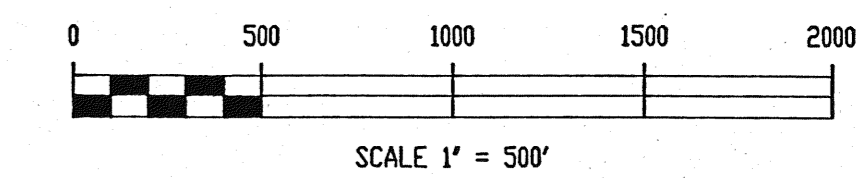
CERTIFICATION

I, Richard W. Forman, do hereby certify that this plat is a true and accurate map of a survey made under my supervision and direction on the 3rd day of June and the 15th day of August, 1989.

Richard W. Forman
Richard W. Forman, P.E., R.L.S.



8-22-89



MAP SHOWING
BS LODE MINING CLAIMS
IN
T. 26 N., R. 49 E., M.D.B. & M.
EUREKA COUNTY, NEVADA
FOR
SANTA FE PACIFIC MINING, INC.

FILED AT THE REQUEST OF *Santa Fe Pacific*
on *Aug 28* 19 *89* at *14* mins, past *1:14* P.M.
RECORDS at EUREKA COUNTY, NEVADA M.N. REBALEATI, Recorder
File No. *129278* Fee \$ *540.00*

SURVEYED & MAPPED
BY
BOUNTY & FORMAN, INC.
ELY, NEVADA
August, 1989