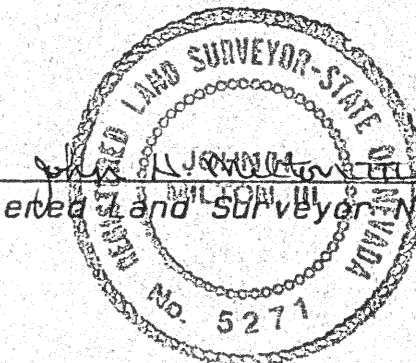


LOCATORS CERTIFICATE FOR FIELD NOTES & RECORD OF SURVEY PURSUANT TO N.R.S. 517.210

I, John H. Milton III, the undersigned, being Registered Land Surveyor No. 5271 of the State of Nevada hereby certifies that this map fully and accurately delineates a survey actually made by him, or under his direction between the 5th day of June 1989 and the 25th day of July 1989; that the names of the claims surveyed and their respective locations are as set forth on the map and as described in the field notes of this survey (which field notes are hereby by reference incorporated herein) and that the description incorporated in said field notes, and as portrayed on this map are sufficient to identify and fix the position of the claims on the ground.



Registered Land Surveyor No. 5271.

8-26-89

NOTES

- Indicates a claim boundary monument set this survey, a 3" dia. PVC post marked for the appropriate corner number with a metal tag wired to the post.
 - △ Indicates a claim location monument set this survey, a 3" dia. PVC post and a plastic bottle, with the notice of location inside, attached to the post.
- All claim location monuments are set 5' from the endline unless otherwise noted.
- △ Indicates found Section corner as noted.

Indicates found 1/4 Section corner as noted.

BASIS OF BEARINGS: The line between the NW and the NE corners of Section 4, T.35N., R.48E., M.D.B.&M., as being East.

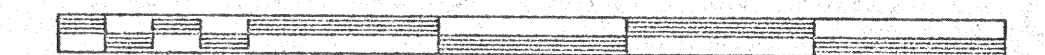
LOCATOR:

Santa Fe Pacific Mining, Inc.
250 S. Rock Blvd., Suite 100
Reno, Nevada 89502

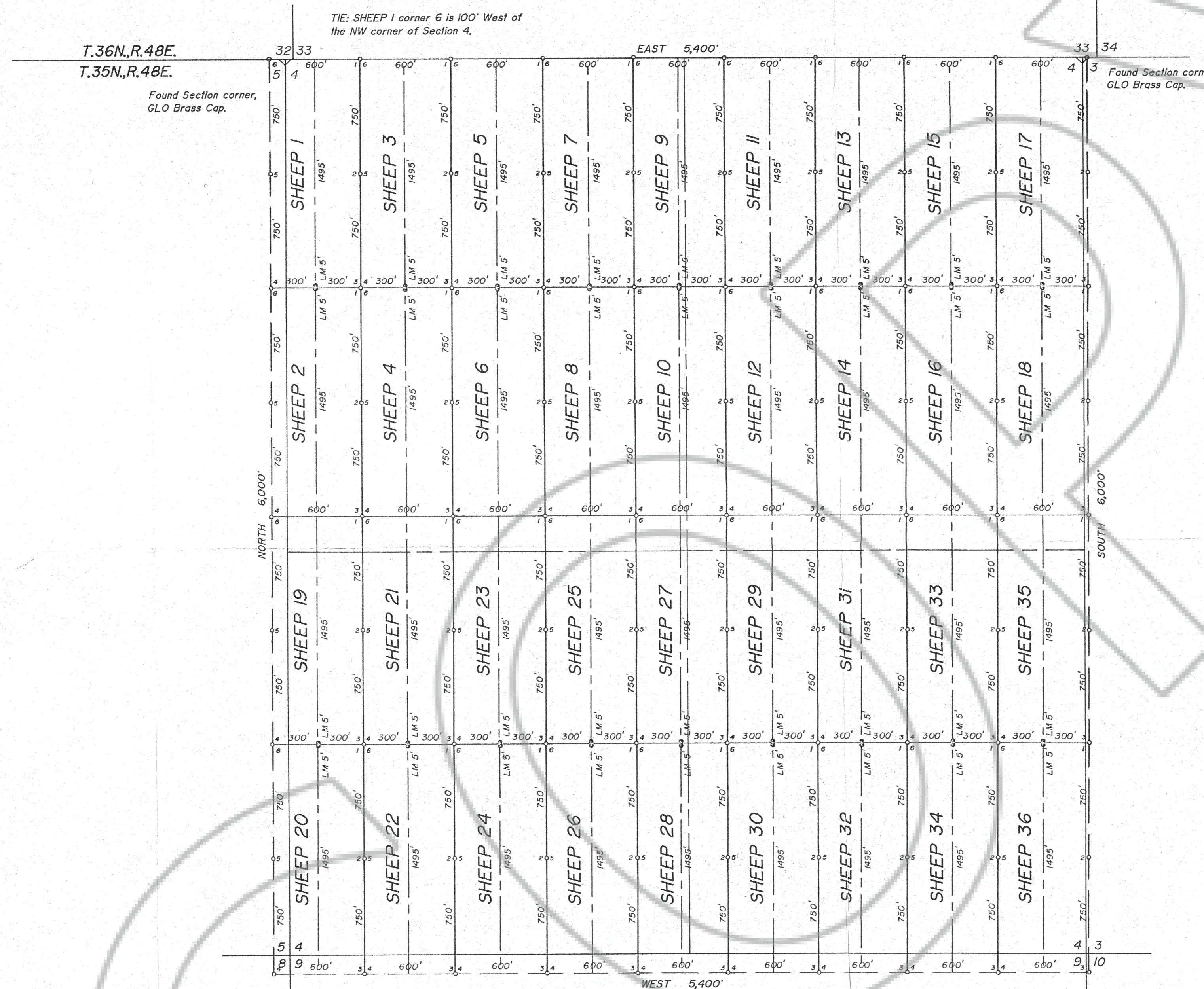
LOCATION DATES:

SHEEP 1-36 were located on 6-5-89.

SCALE: 1"=500'



SECTION 4
T.35N., R.48E.
M.D.B.&M.



129315

FILED AT THE REQUEST OF Santa Fe Pacific
on Aug 28, 1989, at 32 mins. past 12 M.
RECORDS OF EUREKA COUNTY, NEVADA M. N. REBALEATI, Recorder
File No. 129315 Fee \$ 540.00

Desert-Mountain Inc.
Land and Water Right Surveyors
146 West Second Street
Winnemucca, Nevada 89445
702 623-4414

MAP OF
SHEEP LODE CLAIMS
FOR
SANTA FE PACIFIC MINING, INC.

WITHIN SECTION 4
T.35N., R.48E., M.D.B.&M.
EUREKA COUNTY, NEVADA