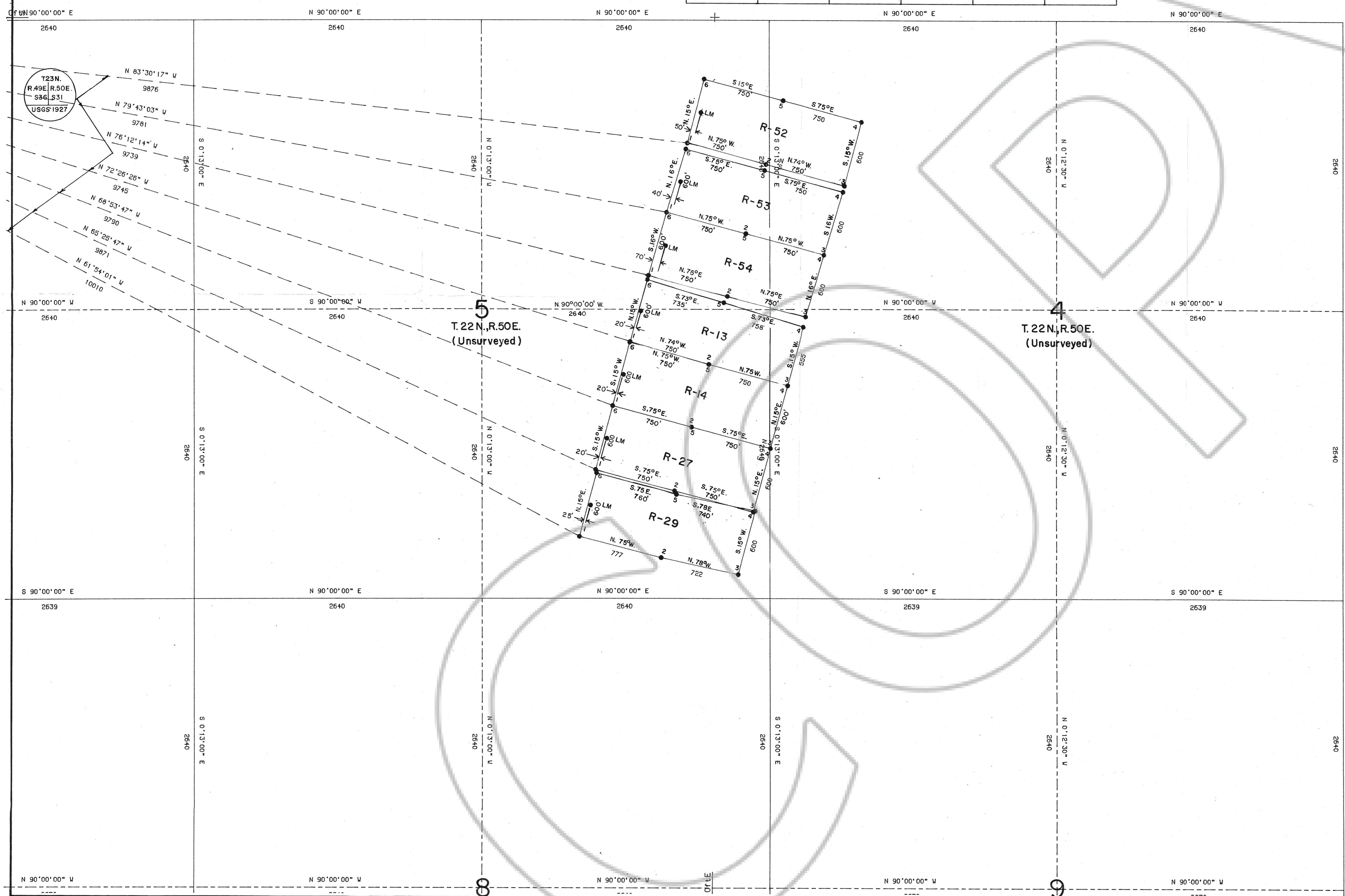
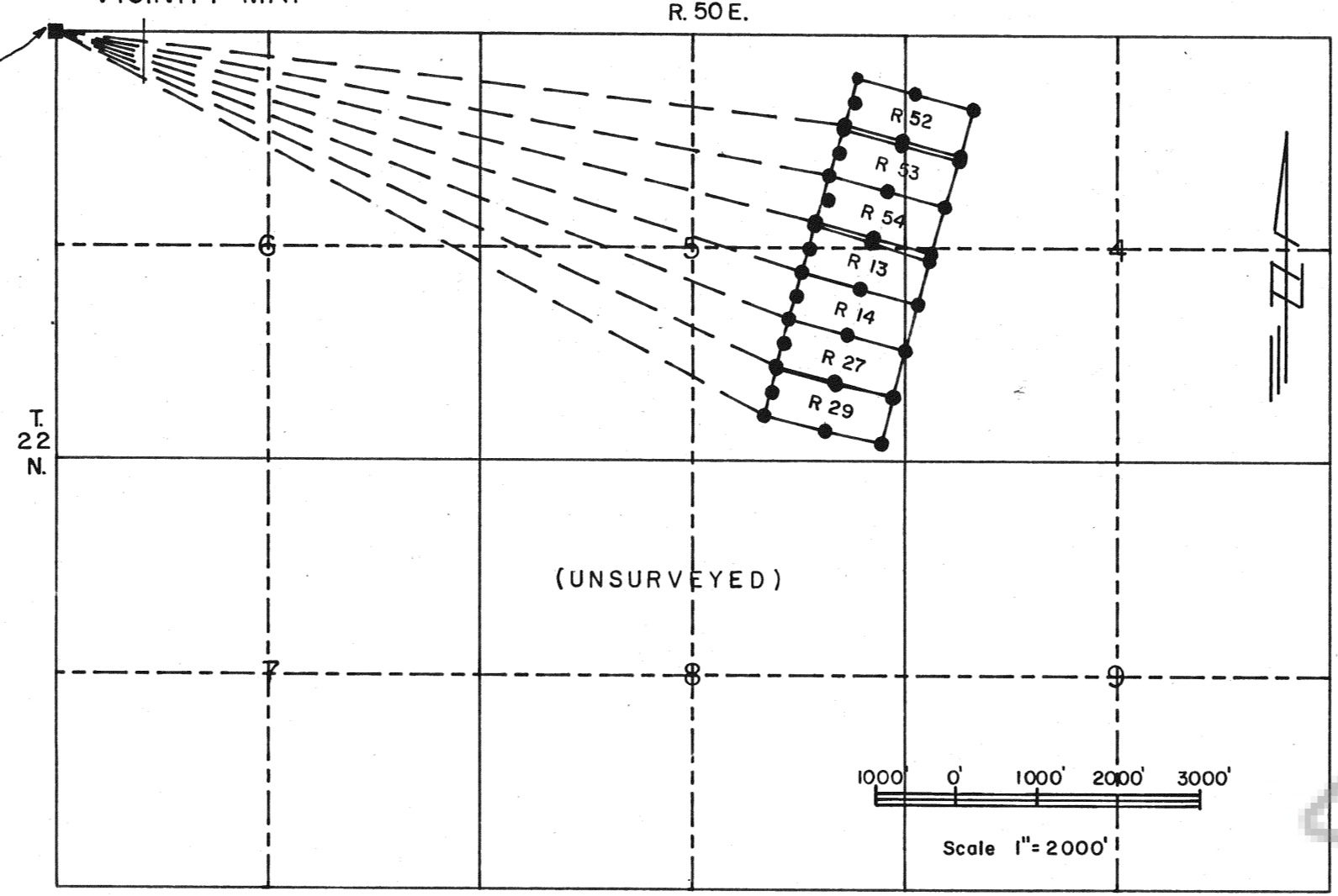


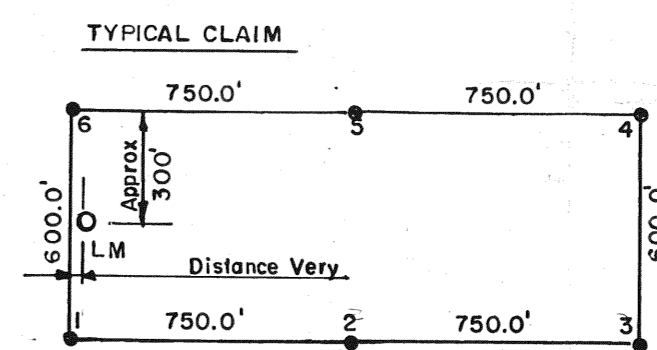
VICINITY MAP

T. 23N.
R. 49E. R. 50E.
S. 36 S. 31

U.S.G.S 1927
Brass Cop



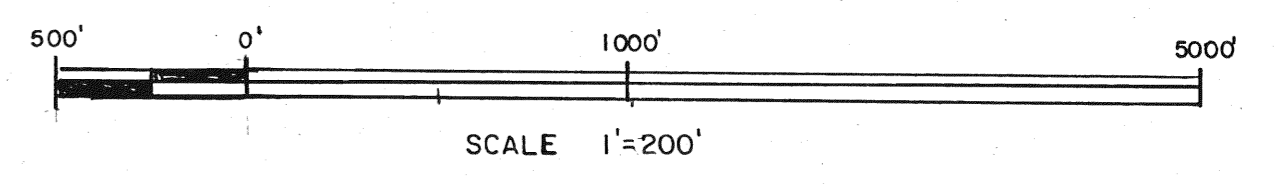
BEARING BASE
DIRECT SOLAR OBSERVATION



LEGEND

Sections were based on protraction Diagram
Claimant PHELPS DODGE CORP 910 Greg St. Sparks, NV 89431
LM Location Monument

● CLAIM CORNERS MONUMENTED WITH 3" x 5' P.V.C. PIPE.



FILED AT THE REQUEST OF *Phelps Dodge Corp*
on *Aug 29*, 19*89*, at *9* mins, past *11 A.M.*
RECORDS OF EUREKA COUNTY, NEVADA M. N. REBALEATI, Recorder
File No. *129365* Fee \$ *105.00*

AMENDED MAP SHOWING
CLAIMS R-13,14,27,29,52,53, & 54
LODE CLAIMS
UNKNOWN MINING DISTRICT
EUREKA COUNTY, NV.
SECTION S 4 & 5, T. 22 N., R. 50E. M.D.B. & M.
(UNSURVEYED)
FOR: PHELPS DODGE CORP 910 GREG ST. SPARKS, NV 89431
8/8/89

FONGER SURVEY
P.O. BOX 491
401 MURRY ST.
ELY, NEVADA 89301
(702) 289-2898