

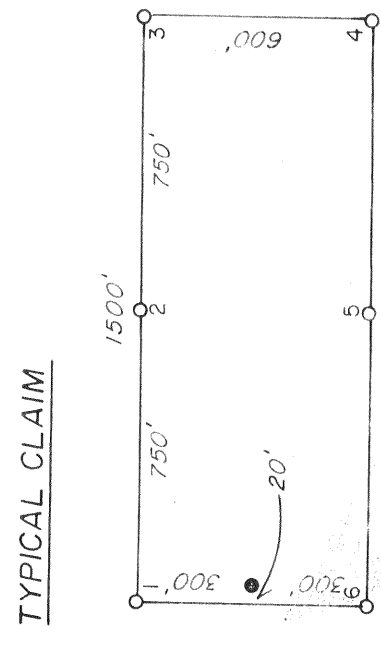
T19N

R52E R53E



FILED BY THE REQUEST OF
 Pegasus Gold Corp.
 230 SOUTH ROCK BLVD.
 SUITE 30
 RENO, NEVADA 89502
 REC'D 11/22/89 10:35 AM
 COUNTY CLERK
 EUREKA COUNTY, NEVADA
 FILE NO. 129780 Fee \$ 1220

129780 500 0 500 1000 FEET



TYPICAL CLAIM

HAWKEYE 1-15, 20-54, 59-84
SIG 13-24, 25-36
SIG 20-37, 50-73, 86-88
LODE MINING CLAIMS

Unsurveyed Sections 1,2, 11-14, 24 T19N, R52E
 Unserved Sections 34-36 T20N, R52E
 Sections 6, 7, 18, 19 T19N, R53E M.D.B. and M

Eureka County, Nevada
 Directed by: Graphic Harmony
 MAP 1 of 2.

NOTES

H signifies HAWKEYE Claims
 All claims measure 1500' x 600' except HAWKEYE 72, which is 600' x 320'
 All monuments are 4 x 4 x 4.5 wood posts or 5" PVC pipe at least 3" in diameter
 All location monuments shown as "o" are set in 20' except SP 25-36 and HAWKEYE 66, 63, which are set in 10'. also HAWKEYE 46-53 which are set in 750'

TIE

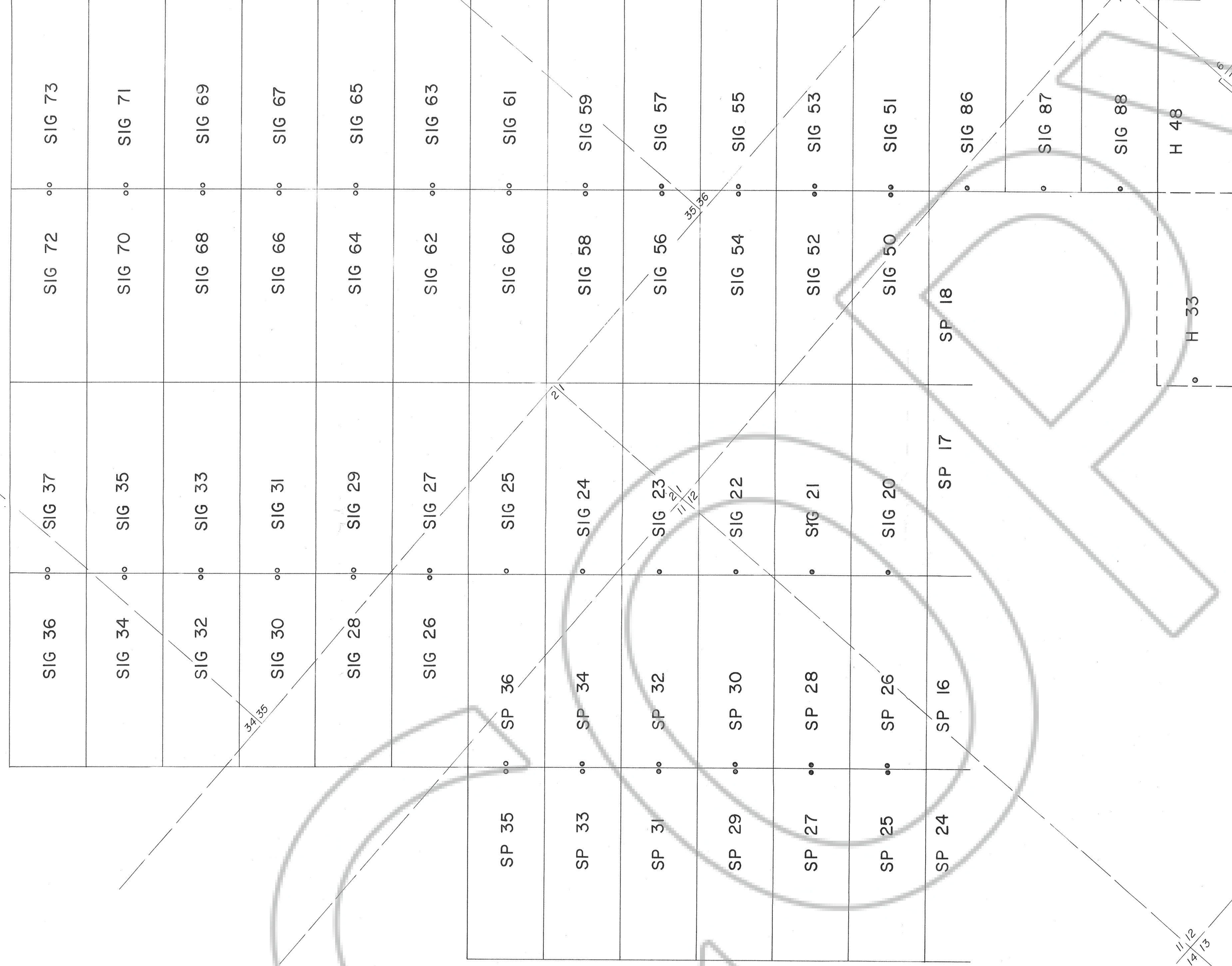
The SE corner of HAWKEYE 33 is approximately 650' South and 625' West of the NW corner of Section 7, T19N, R53E.

LOCATOR

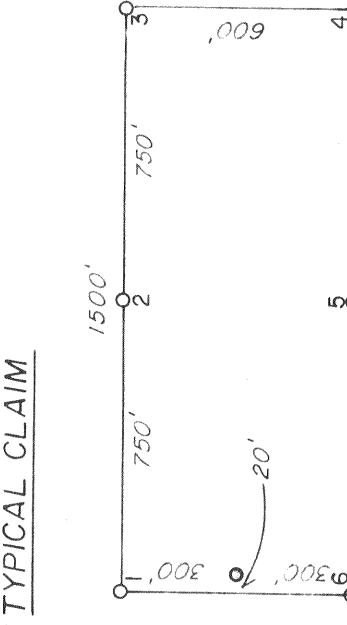
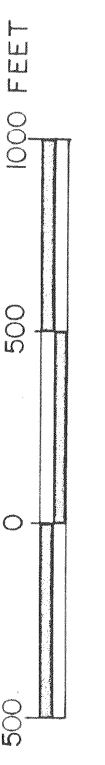
PEGASUS GOLD CORP.
 230 SOUTH ROCK BLVD.
 SUITE 30
 RENO, NEVADA 89502

LOCATION DATES

6/29/89	HAWKEYE 64-72
6/30/89	" 48-54
6/30/89	" 73-78
7/16/89	" 79-84
7/17/89	SP 25-36
7/26/89	HAWKEYE 32-43
7/26/89	HAWKEYE 17-22
7/26/89	SIG 20-37, 58-73
7/27/89	HAWKEYE 1-15, 20-31,
7/27/89	" 44-47, 59-63
7/27/89	SP 15-16, 23, 24
7/27/89	SIG 50-57, 86-88



FILED AT THE REQUEST OF
 on Sept 22 19 89 11:35 AM, DIST. 1A M.
 RECORD OF PLATS COUNTY, NEVADA M. N. REBALEATI, Recorder
 File No. 129780 Fee \$ 855



HAWKEYE 1-15, 20-54, 59-84
SP 13-24, 25-36
SIG 20-37, 50-73, 86-88
LODE MINING CLAIMS
 Unsurveyed Sections 1,2, 11-14, 24 T19N, R52E
 Unsurveyed Sections 34-36 T20N, R52E
 Sections 6,7, 18,19 T19N, R53E M.D.B.andM
 Eureka County, Nevada

NOTES

H signifies HAWKEYE Claims
 All claims measure 1500' x 600' except HAWKEYE 72, which is 600' x 320'
 All monuments are 4 x 4 x 4.5 wood posts or 5' PVC pipe at least 3" in diameter
 All location monuments shown as "o" are set in 20', except SP 25-36 and HAWKEYE 66, 83, which are set in 10' also HAWKEYE 48-53 which are set in 750'

TIE

The SE corner of HAWKEYE 33 is approximately 650' South and 625' West of the NW corner of Section 7, T19N, R53E.

LOCATOR
 PEGASUS GOLD CORP.
 230 SOUTH ROCK BLVD.
 SUITE 30
 RENO, NEVADA 89502

LOCATION DATES

6/29/89	HAWKEYE 64-72
6/30/89	" 48-54
6/30/89	" 73-78
7/6/89	" 79-84
7/7/89	SP 25-36
7/26/89	HAWKEYE 32-43
7/26/89	SP 17-22
7/26/89	SIG 20-37, 59-73
7/27/89	HAWKEYE 1-15, 20-31,
7/27/89	" 44-47, 59-63,
7/27/89	SP 13-16, 23, 24
7/27/89	SIG 50-57, 86-88