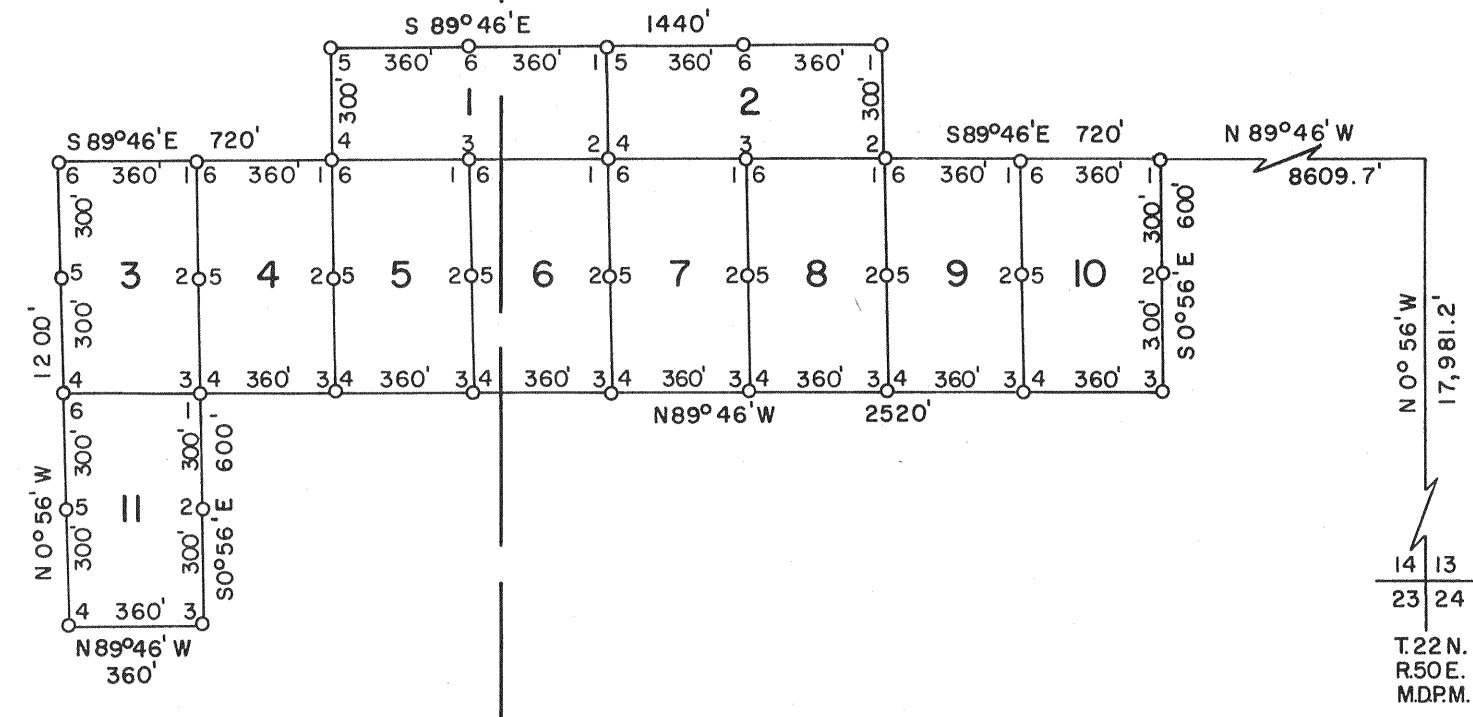
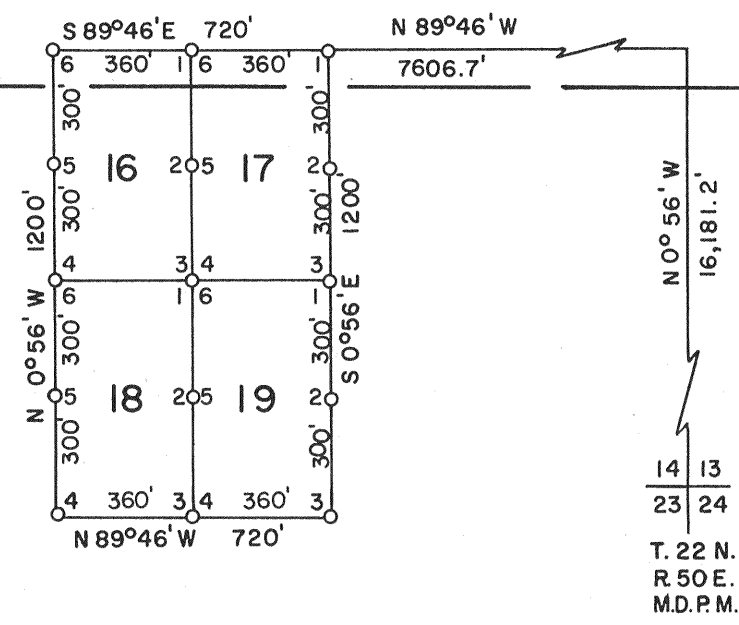


R. 50 E.

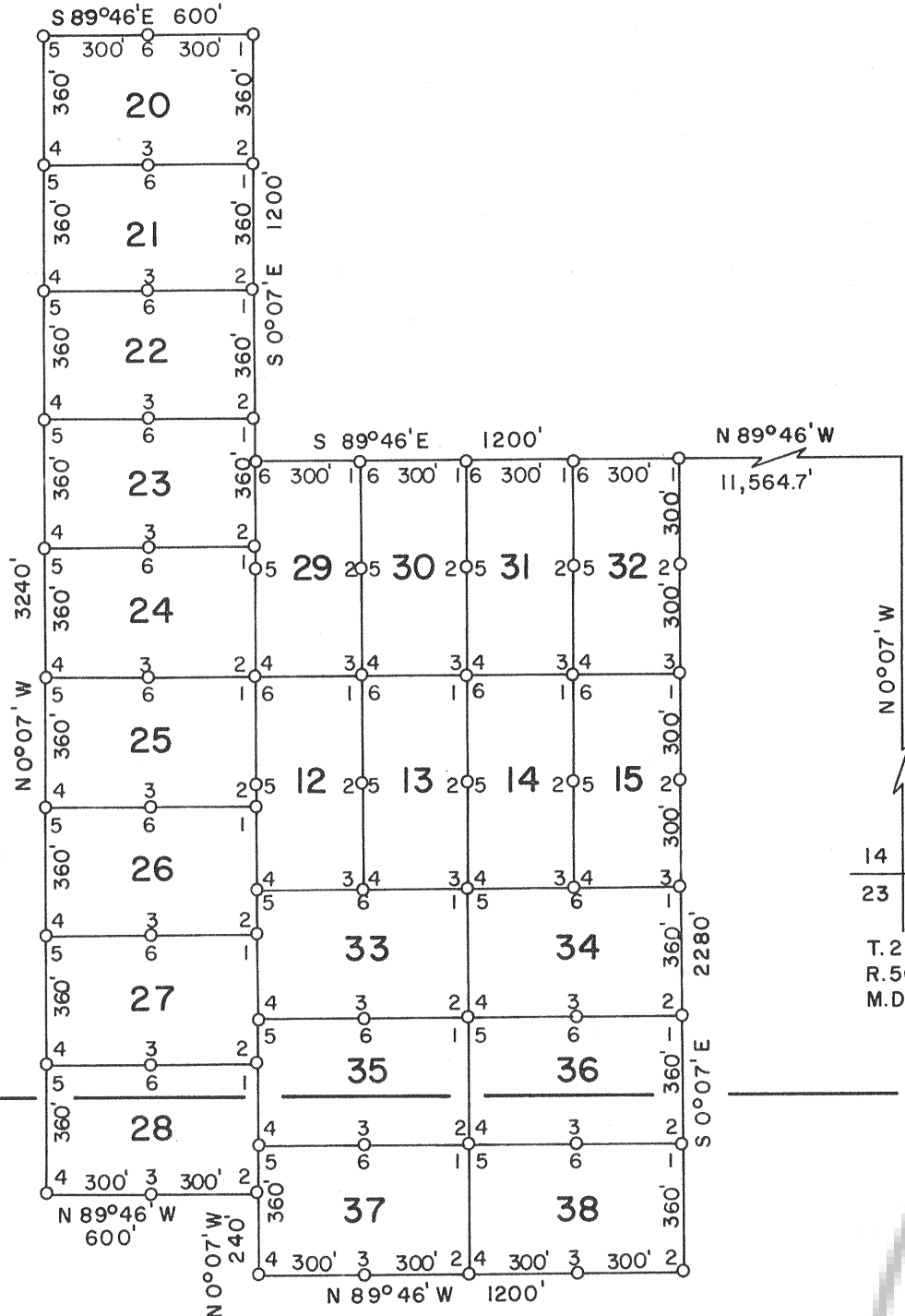


33 34
4 3

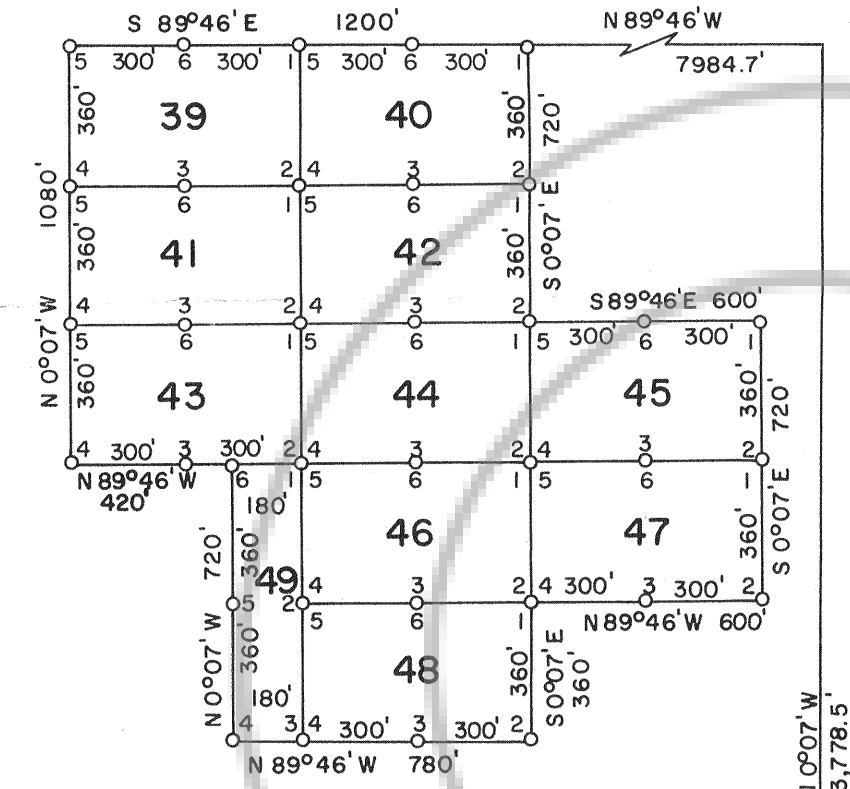


34 35
3 2

T. 23 N.
T. 22 N.



4 3
9 10



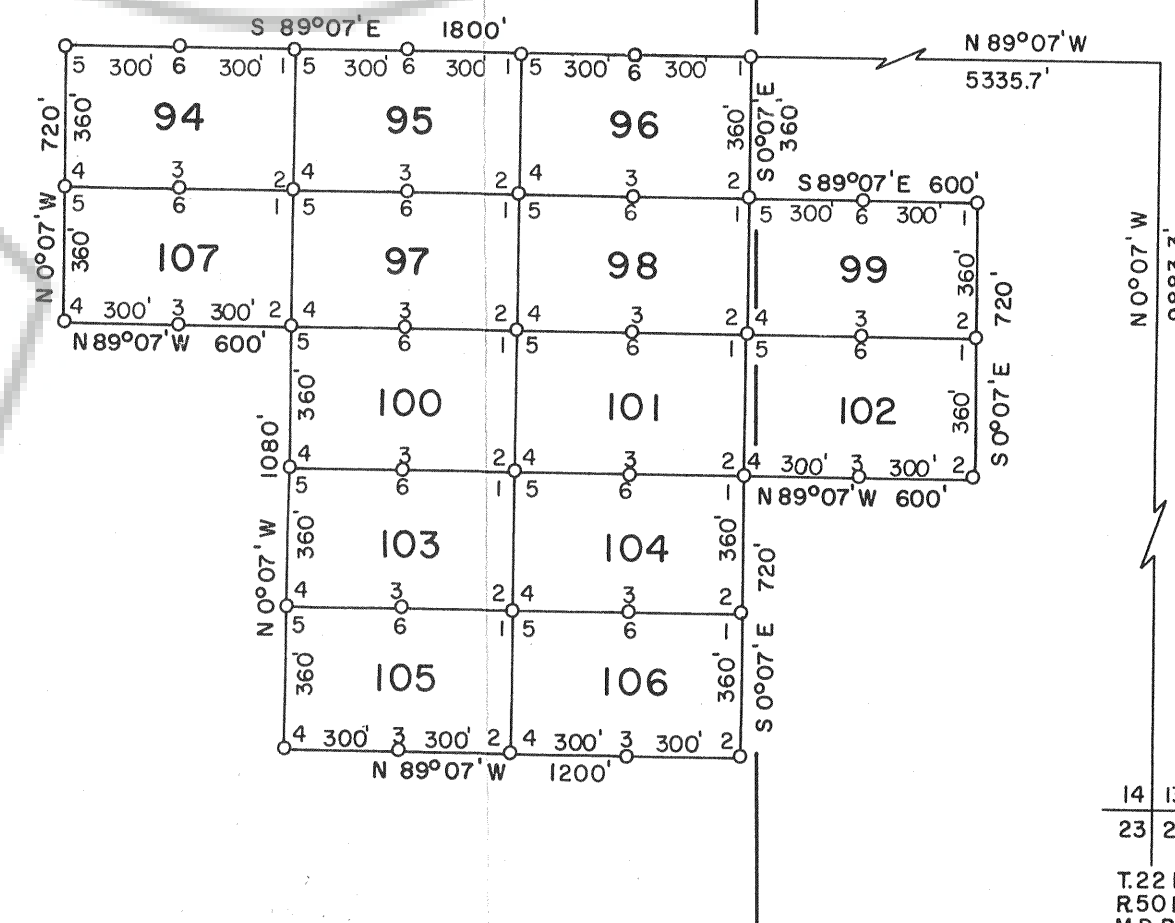
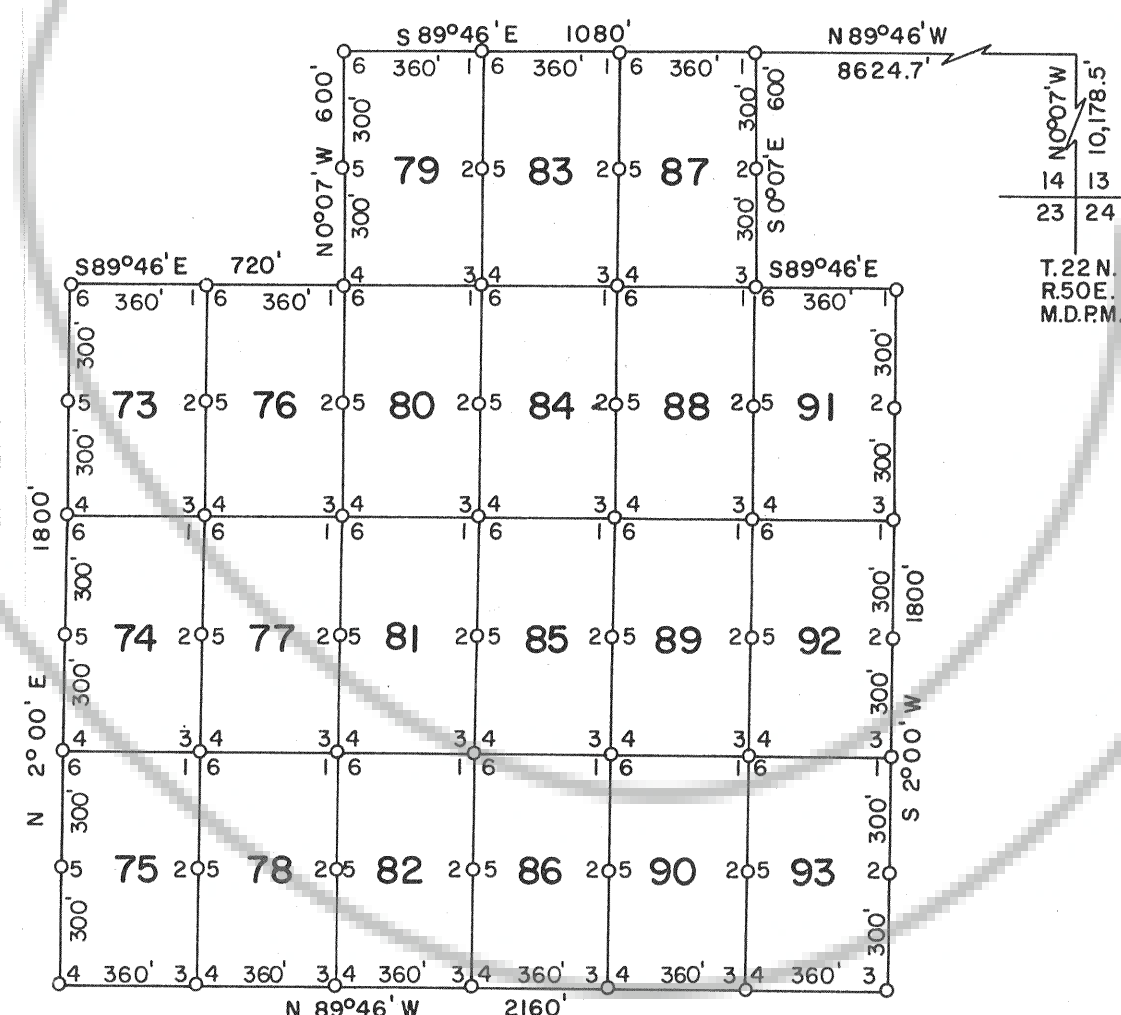
3 2
10 11

SCALE - 1" = 500'

NORTH

NOTE

- 1.) BEARINGS SHOWN ARE GRID AND REFERENCED TO THE NEVADA STATE PLANE COORDINATE SYSTEM, EAST ZONE (DISTANCE SHOWN ARE SURFACE, NOT SEA LEVEL.)
- 2.) SECTION CORNERS AND LINES ARE FROM THE NEVADA PROTRACTION DIAGRAM
- 3.) THE NOTICE OF LOCATION IS POSTED ON THE NE CORNER, POST NO. 1
- 4.) ALL POSTS ARE 3 1/2" X 4' WOOD POSTS



LOCATION DATES

SEPTEMBER 21, 1989	79,83,87,88
SEPTEMBER 22, 1989	73,74,76,77,80,81,84,85,89,92
SEPTEMBER 23, 1989	75,78,82,86,90,91,93
SEPTEMBER 24, 1989	94,95,99,102,106
SEPTEMBER 25, 1989	20-23,96,97,98,100,101,103,104,105,107
SEPTEMBER 26, 1989	36,38
SEPTEMBER 27, 1989	12-15,24-28,33,34,35,37
SEPTEMBER 28, 1989	29-32
SEPTEMBER 30, 1989	1-11,16-19
OCTOBER 1, 1989	39-42,44-47,49
OCTOBER 2, 1989	43,48

FILED AT THE REQUEST OF *Atlas Precious Metals*
 on *Nov 16* 1989, at *3:32* mins. past *2* P.M.
 RECORDS OF EUREKA COUNTY, NEVADA M. N. REBALEATI, Recorder
 File No. **130761** Fee \$ *1200*

MAP OF THE
PM MILL SITE CLAIMS
 EUREKA COUNTY, NEVADA

LOCATED BY TERRY ZENK
 AGENT FOR
 ATLAS PRECIOUS METALS, INC.
 370 17th STREET, SUITE 3150
 DENVER, COLORADO 80202
 OCTOBER 31, 1989

130761