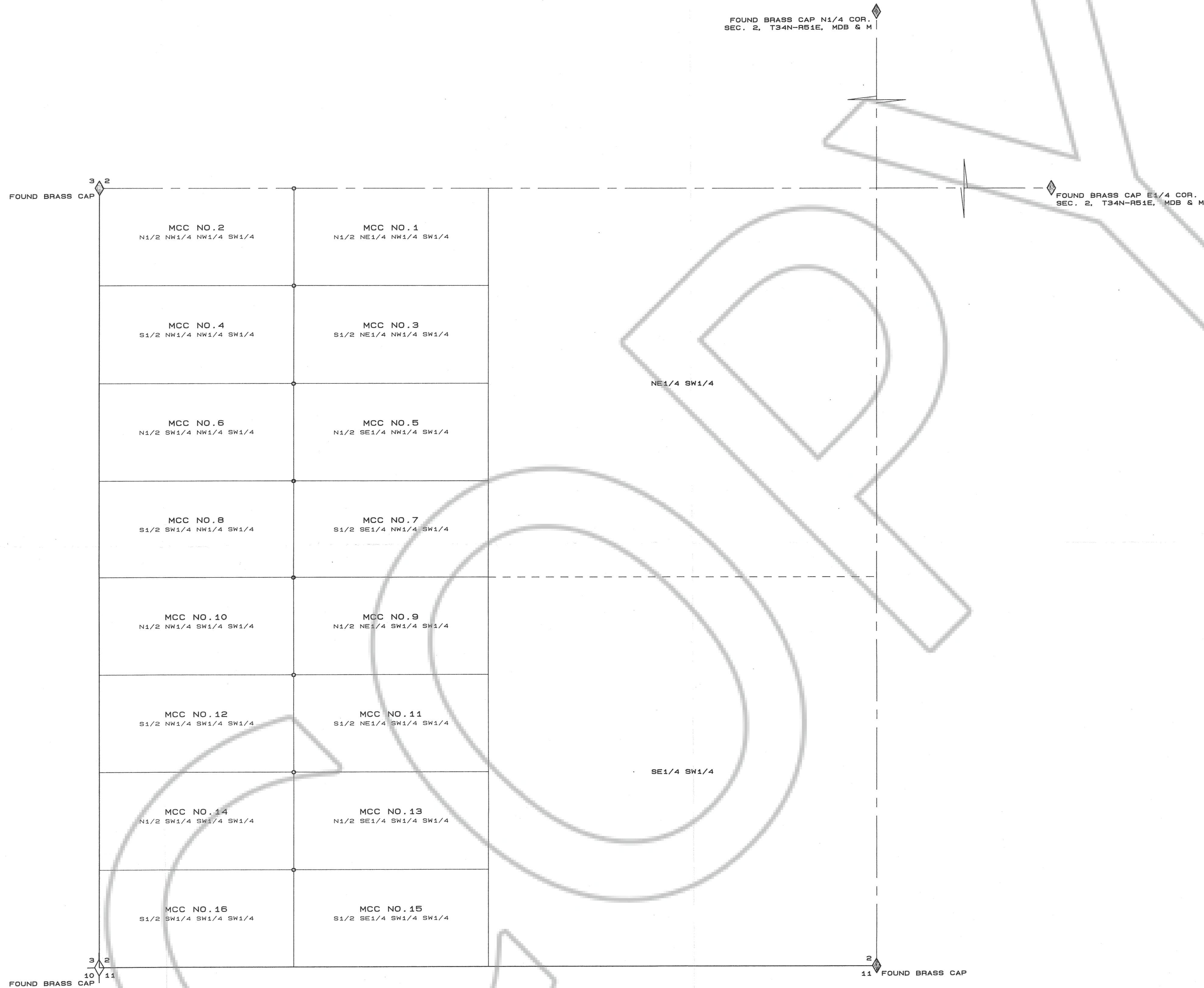


N



LAND SURVEYOR'S CERTIFICATE

I, ROBERT E. MORLEY, DO HEREBY CERTIFY THAT THIS IS A TRUE AND ACCURATE MAP OF THE LAND SURVEYED UNDER MY SUPERVISION AND DIRECTION ON THE 13TH DAY OF DECEMBER, 1989, AT THE INSTANCE OF NEWMONT GOLD COMPANY AND THAT THE MONUMENTS ARE OF THE CHARACTER AND OCCUPY THE POSITIONS INDICATED HEREON AND ARE SUFFICIENT TO ENABLE THIS SURVEY TO BE RETRACED.

P.L.S. NO. 6203

*Robert E. Morley*

1/30/90

OWNER AND LOCATOR

NEWMONT GOLD COMPANY  
P.O. BOX 669  
CARLIN, NEVADA 89822

LOCATION DATES

MCC NO. 1 - 16 WERE LOCATED ON DECEMBER 13, 1989.

LEGEND

- = 3" DIAMETER P.V.C. PIPE LOCATION MONUMENT
- ◊ = FOUND 1/4 CORNER
- ◇ = FOUND SECTION CORNER

NOTES

1) THE LOCATOR IS THE PROPRIETOR OF THE MAGGIE AND TUSC UNPATENTED MINING CLAIMS GENERALLY LOCATED IN T34N - R51E, MDB & M, EUREKA COUNTY, NEVADA.

FILED AT THE REQUEST OF *Newmont Gold Co.*  
ON *Dec 7* 19 *89* P.M.S. DEED *2p*  
RECORDS OF EUREKA COUNTY, NEVADA R.N. REGALD  
FILE NO. *131467* Fee \$ *240*

SCALE: 1" = 200'



MAP OF  
MCC MILLSITE CLAIMS 1 - 16  
for  
NEWMONT GOLD COMPANY  
SECTION 2, T34N - R51E, MDB & M  
EUREKA COUNTY, NEVADA

BOYACK SURVEYING  
515 SOUTH FIFTH STREET  
ELKO, NV. 89801

90005