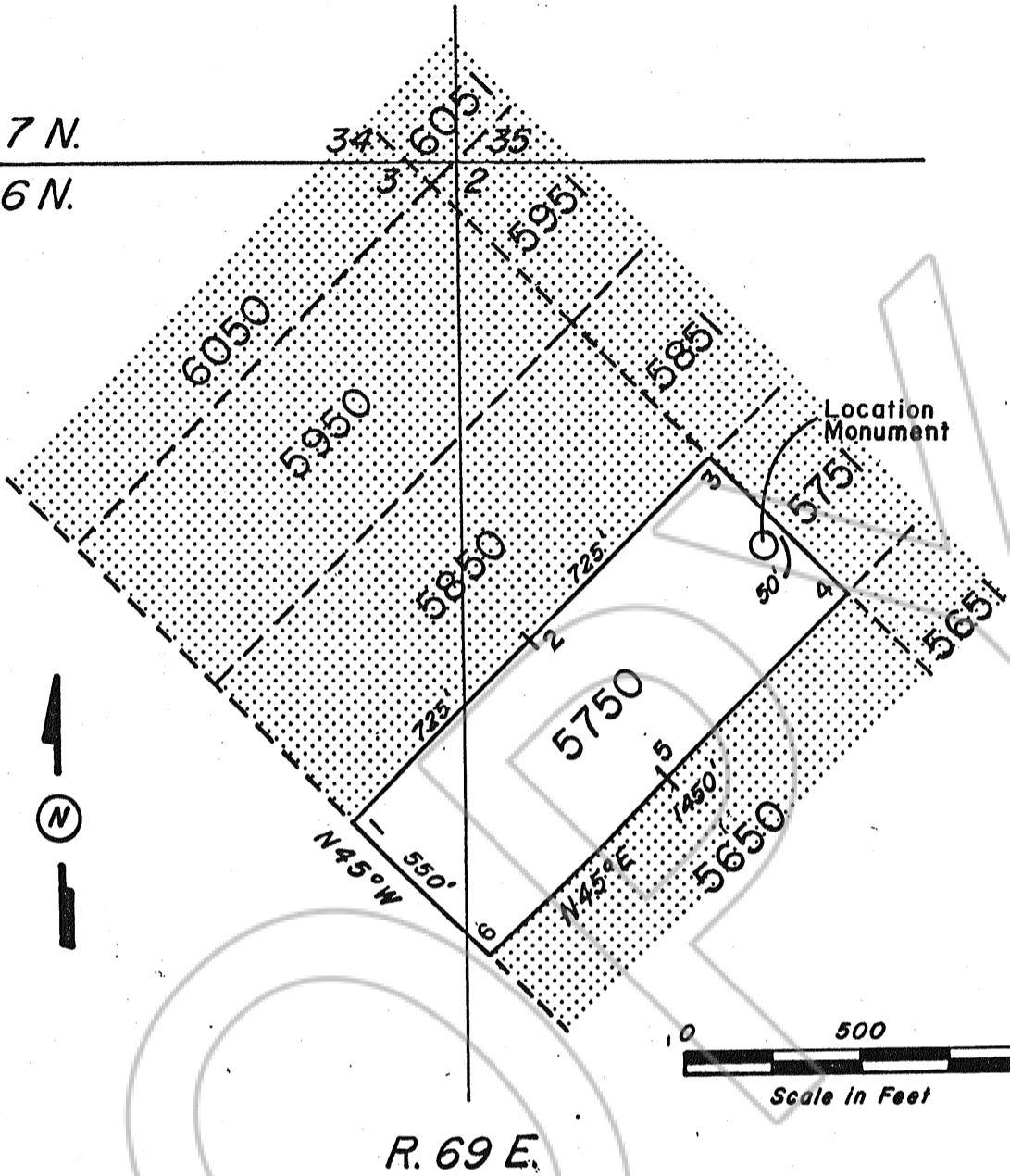


T. 7 N.
T. 6 N.



Rose 5750 Lode Mining Claim
Eureka County, Nevada
Located by ECM, Inc.

*This claim is
in Lincoln County*

FILED AT THE REQUEST OF ECM, Inc
on Feb 15 1990, at 33 mins, past 11 A.M.
RECORDS of EUREKA COUNTY, NEVADA M. N. REBALEATI, Recorder
File No. 131503 Fee \$ 15.00

131503