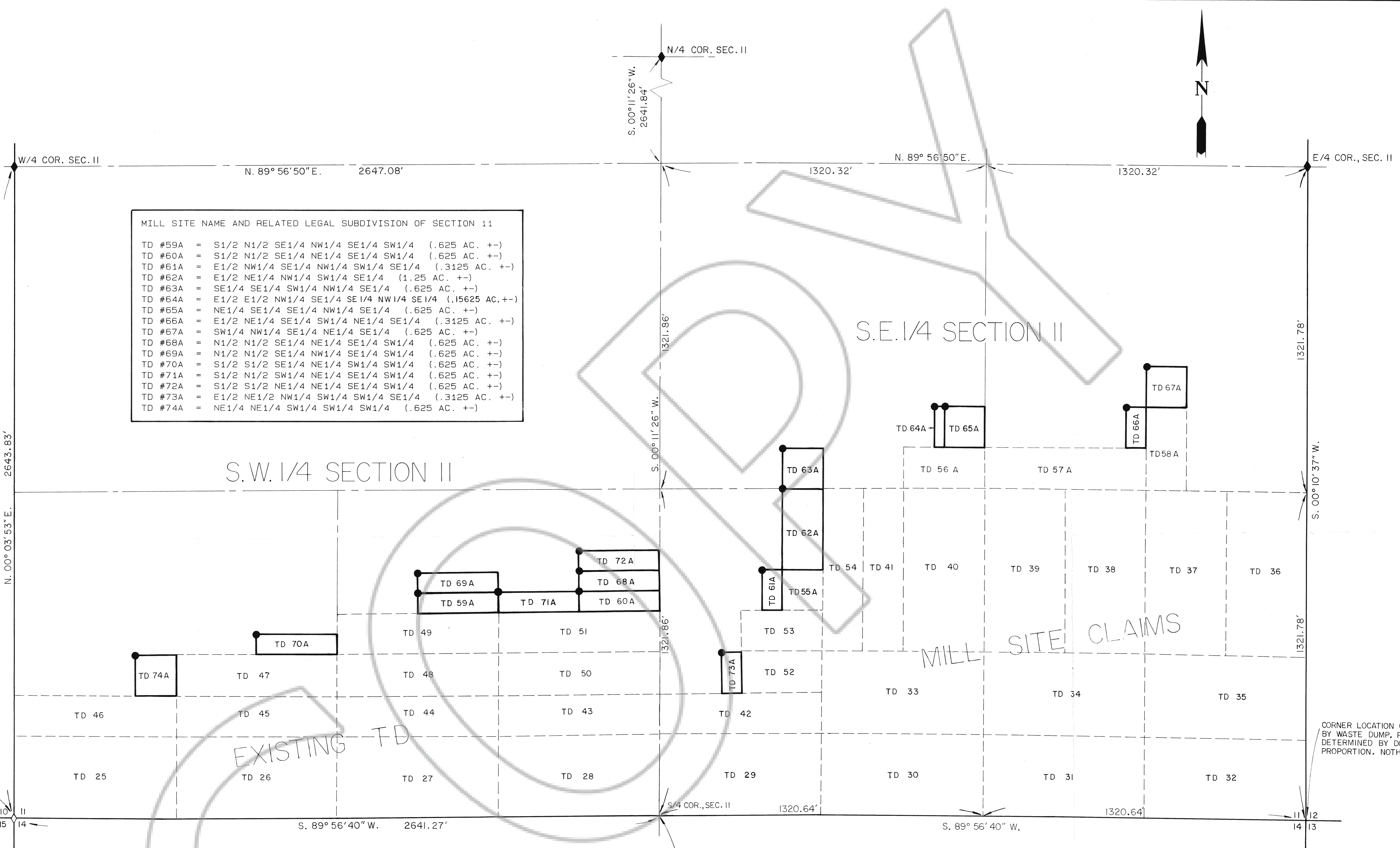


MILL SITE NAME AND RELATED LEGAL SUBDIVISION OF SECTION 11

TD #59A	=	S1/2 N1/2 SE1/4 NW1/4 SE1/4 SW1/4	(.625 AC. +-)
TD #60A	=	S1/2 N1/2 SE1/4 NE1/4 SE1/4 SW1/4	(.625 AC. +-)
TD #61A	=	E1/2 NW1/4 SE1/4 NW1/4 SW1/4 SE1/4	(.3125 AC. +-)
TD #62A	=	E1/2 NE1/4 NW1/4 SW1/4 SE1/4	(1.25 AC. +-)
TD #63A	=	SE1/4 SE1/4 SW1/4 NW1/4 SE1/4	(.625 AC. +-)
TD #64A	=	E1/2 E1/2 NW1/4 SE1/4 SE1/4 NW1/4 SE1/4	(.15625 AC. +-)
TD #65A	=	NE1/4 SE1/4 SE1/4 NW1/4 SE1/4	(.625 AC. +-)
TD #66A	=	E1/2 NE1/4 SE1/4 SW1/4 NE1/4 SE1/4	(.3125 AC. +-)
TD #67A	=	SW1/4 NW1/4 SE1/4 NE1/4 SE1/4	(.625 AC. +-)
TD #68A	=	N1/2 N1/2 SE1/4 NE1/4 SE1/4 SW1/4	(.625 AC. +-)
TD #69A	=	N1/2 N1/2 SE1/4 NW1/4 SE1/4 SW1/4	(.625 AC. +-)
TD #70A	=	S1/2 S1/2 SE1/4 NE1/4 SW1/4 SW1/4	(.625 AC. +-)
TD #71A	=	S1/2 N1/2 SW1/4 NE1/4 SE1/4 SW1/4	(.625 AC. +-)
TD #72A	=	S1/2 S1/2 NE1/4 NE1/4 SE1/4 SW1/4	(.625 AC. +-)
TD #73A	=	E1/2 NE1/2 NW1/4 SW1/4 SW1/4 SE1/4	(.3125 AC. +-)
TD #74A	=	NE1/4 NE1/4 SW1/4 SW1/4 SW1/4	(.625 AC. +-)



CORNER COVERED BY FILL. RECORD POSITION HELD.

CORNER LOCATION COVERED BY WASTE DUMP. POSITION DETERMINED BY DOUBLE PROPORTION. NOTHING SET

CORNER NOT FOUND (AREA DISTURBED BY EXCAVATION) POSITION DETERMINED BY SINGLE PROPORTION.

**LEGEND**

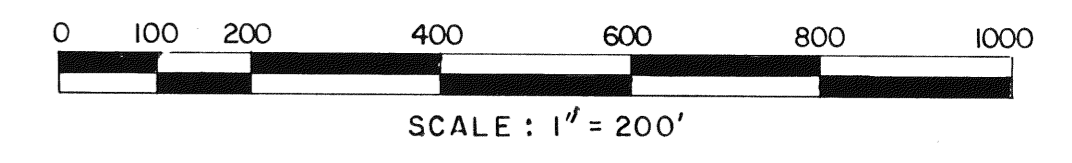
- FOUND SECTION CORNER, GLO BRASS CAP
- FOUND QUARTER CORNER, GLO BRASS CAP
- SET 3" X 5' PVC PIPE FOR LOCATION MONUMENT AT NORTHWEST CORNER OF CLAIM

LOCATOR:  
NEWMONT GOLD COMPANY  
P.O. BOX 669  
CARLIN, NEVADA 89822

LOCATION DATES:  
TD #59A AND #60A, 22 DEC. 1989  
TD #61A THRU 74A, 5 FEB. 1990

NOTE: THE LOCATOR IS THE PROPRIETOR OF THE ALAN AND BLUE STAR PATENTED AND THE PETE UNPATENTED LODE MINING CLAIMS GENERALLY LOCATED IN THE UNKNOWN (LYNN) MINING DISTRICT, IN EUREKA COUNTY, STATE OF NEVADA.

THE BASIS OF BEARINGS AND SECTION LINE DIMENSIONS ARE DERIVED FROM THE CARLIN MINE GRID AND COORDINATE SYSTEM.



FILING DATA  
FILED AT THE REQUEST OF OF:  
*Newmont Gold*  
DATE: *Feb 26, 1990*  
TIME: *10:45 A.M.*  
FILE NO.: *131556*  
*M. F. Roberts*  
EUREKA COUNTY RECORDER  
*Feb 24 1990*

**MAP OF  
TD 59A-74A MILLSITE CLAIMS**

SITUATED IN SECTION 11, T. 35N., R. 50E., M.D.M.  
EUREKA COUNTY, NEVADA  
FOR  
**NEWMONT GOLD COMPANY**  
P.O. BOX 669  
CARLIN, NEVADA 89822

CHILTON Engineering & Surveying Ltd.  
421 Court Street Elko, Nevada 89801

**89071**