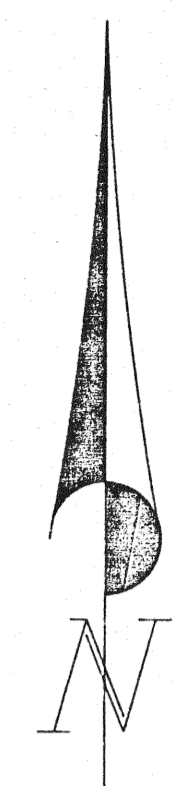
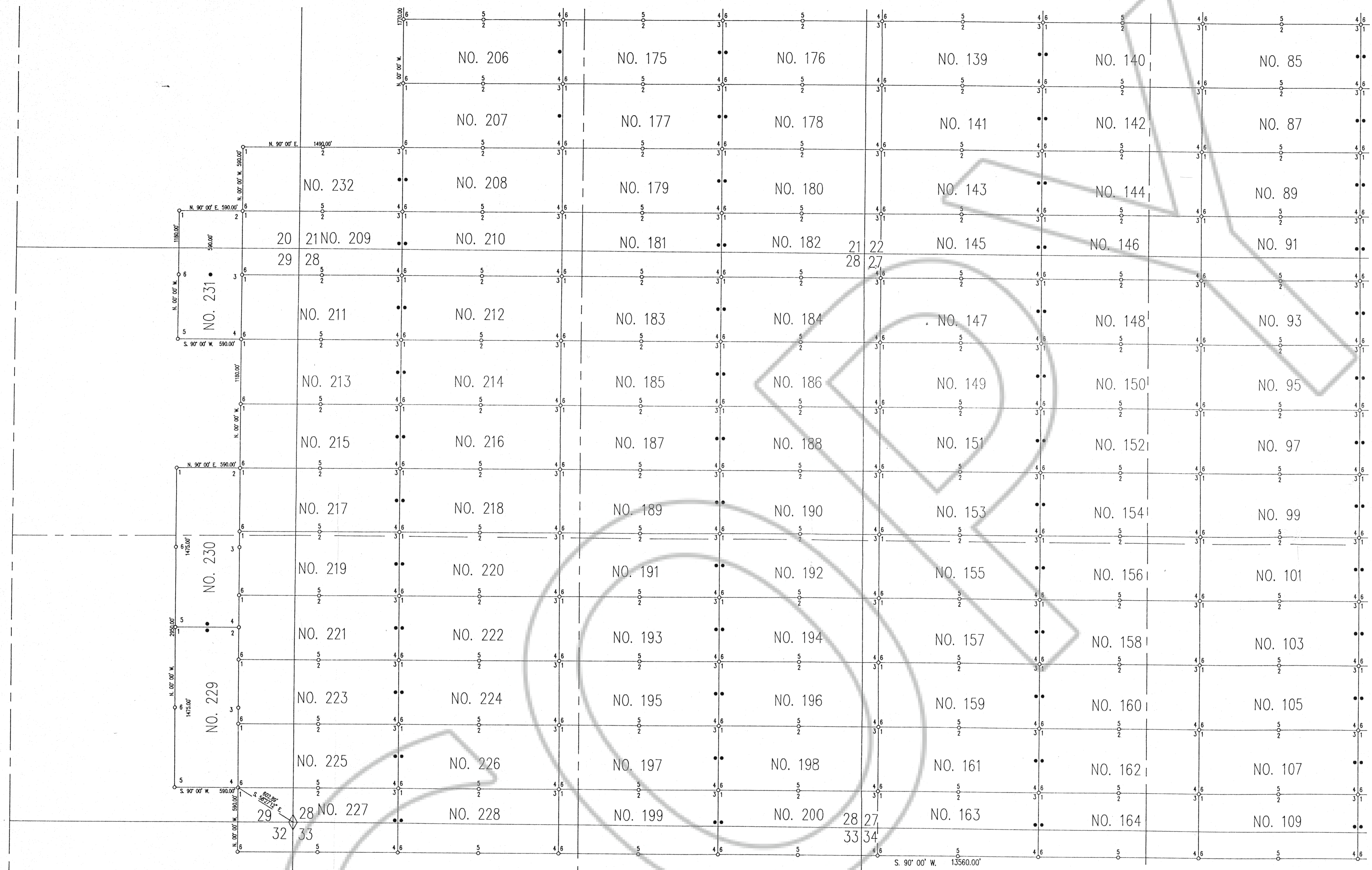


JOINS SHEET No.2



BASIS OF BEARINGS  
BY  
SOLAR OBSERVATION

CERTIFICATION

I, Richard W. Forman, do hereby certify that this plat is a true and accurate map of a survey made under my supervision and direction between the 12th day of December, 1989 and the 1st day of February, 1990.

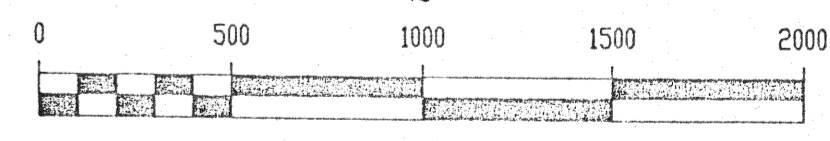
*Richard W. Forman*  
Richard W. Forman, P.E., P.L.S.



NOTES:

- All claims are 590' wide x 1490' long with the Discovery Monuments 10' from end lines, except as otherwise shown and noted.
- At all Corners, Side Centers and Discovery Monuments are 3" diameter x 5' long posts with aluminum tags denoting the appropriate corners.
- o = Corner and Side Center posts.  
• = Discovery Monuments.
- These claims were located by: SANTA FE PACIFIC MINING, INC.  
250 South Rock Blvd., Suite 100  
Reno, Nevada 89502
- SIM Nos. 61-82 were located on December 12, 1989.  
SIM Nos. 83 thru 110 were located on December 13, 1989.  
SIM Nos. 137 thru 164 were located on December 14, 1989.  
SIM Nos. 21 thru 41, 43, 45, 47 & 49 were located on December 15, 1989.  
SIM Nos. 129 thru 136 were located on December 18, 1989.  
SIM Nos. 59, 60 & 111 thru 128 were located on December 19, 1989.  
SIM Nos. 1 thru 20 were located on December 20, 1989.  
SIM Nos. 175 thru 200 were located on December 21, 1989.  
SIM Nos. 42, 44, 46, 48, 50 thru 58 & 237 thru 241 were located on December 22, 1989.  
SIM Nos. 165 thru 174, 201 thru 207, 233 & 234 were located on December 27, 1989.  
SIM Nos. 208 thru 228 & 232 were located on December 28, 1989.  
SIM Nos. 252 & 253 were located on January 9, 1990.  
SIM Nos. 242 thru 245 were located on January 10, 1990.  
SIM Nos. 229 & 230 were located on January 16, 1990.  
SIM Nos. 254 thru 257 were located on January 17, 1990.  
SIM Nos. 246 thru 251 were located on January 18, 1990.  
SIM Nos. 235, 236 & 258 were located on January 19, 1990.  
SIM No. 231 was located on February 1, 1990.
- There is a total of 258 claims.

FILED AT THE REQUEST OF  
SANTA FE PACIFIC MINING, INC.  
on March 7 1990, at 28 mins, past 10 P.M.  
RECORDS OF EUREKA COUNTY, NEVADA M. N. REBALEST  
File No. 132002 Fee \$ 380



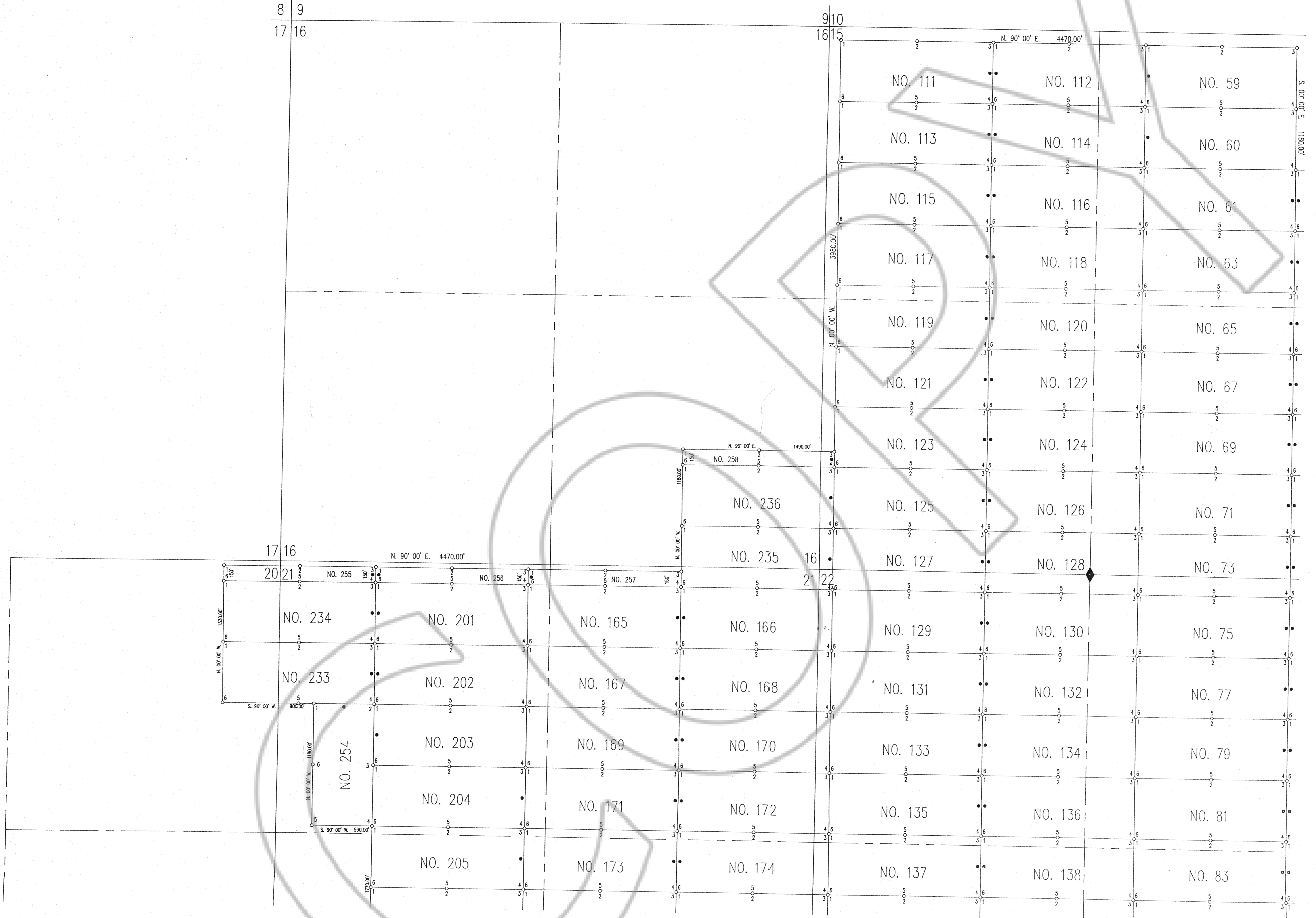
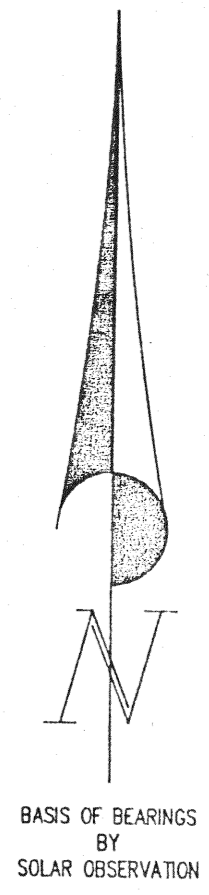
SCALE 1" = 500'

SHEET 1 OF 4 SHEETS

MAP SHOWING  
SIM LODE MINING CLAIMS  
IN  
T.25 N., R.49 E., M.D.B. & M.  
EUREKA COUNTY, NEVADA  
FOR  
SANTA FE PACIFIC MINING, INC.

132002  
PREPARED BY  
BOUNDY & FORMAN, INC.  
ELY, NEVADA  
FEBRUARY, 1990.

JOINS SHEET No.3



JOINS SHEET No.4

JOINS SHEET No.1



MADE AT THE REQUEST OF SANTA FE PACIFIC  
MINING, INC.  
1970, at 2.8 mins. past 12 M.  
RECORDS OF EUREKA COUNTY, NEVADA M. N. REBELETTI, Recorder  
File No. 132002 Fee \$ 500  
SCALE 1" = 500'

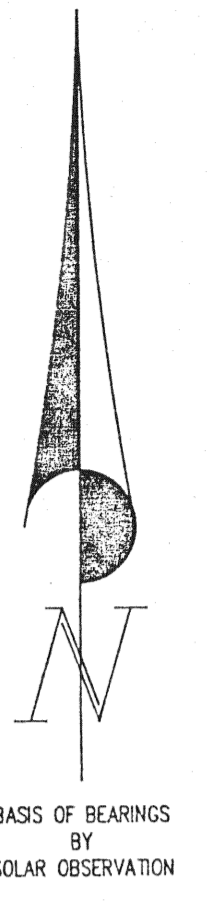
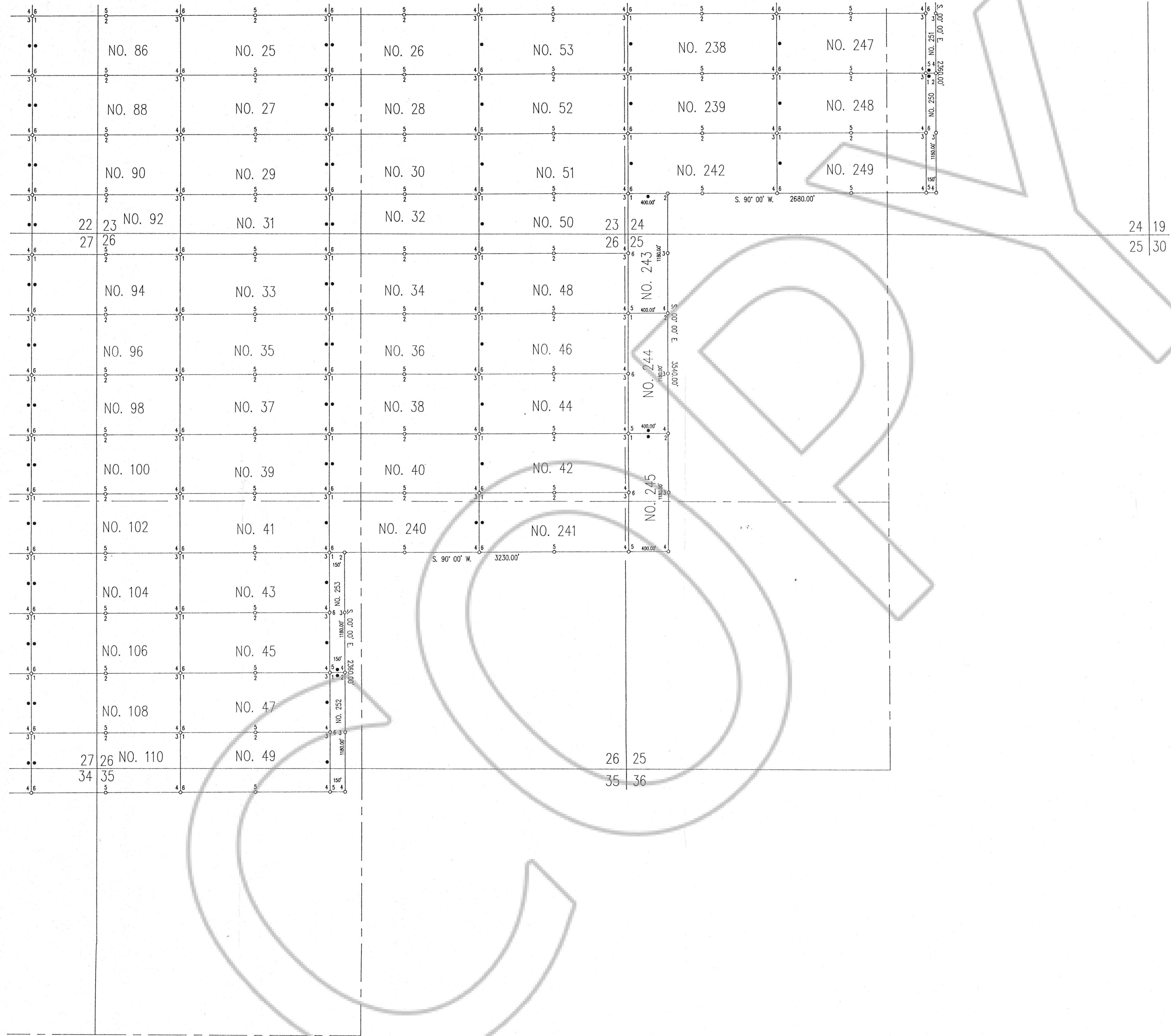
SHEET 2 OF 4 SHEETS

132002  
PREPARED BY  
BOUNDY & FORMAN, INC.  
ELY, NEVADA  
FEBRUARY, 1990.

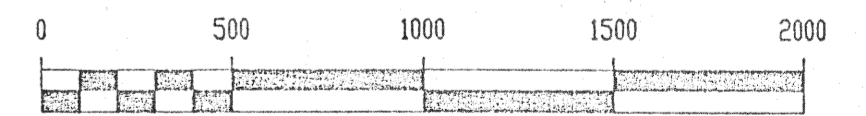
MAP SHOWING  
SIM LODE MINING CLAIMS  
IN  
T.25 N., R.49 E., M.D.B. & M.  
EUREKA COUNTY, NEVADA  
FOR  
SANTA FE PACIFIC MINING, INC.

JOINS SHEET No.4

JOINS SHEET No.1



FILED AT THE REQUEST OF SANTA FE PACIFIC MINING, INC.  
 on March 7 19 90, at 28 mins. past 10 A.M.  
 RECORDS OF EUREKA COUNTY, NEVADA M.N. RECORDED UNDER  
 File No. 132002 Fee \$ 855

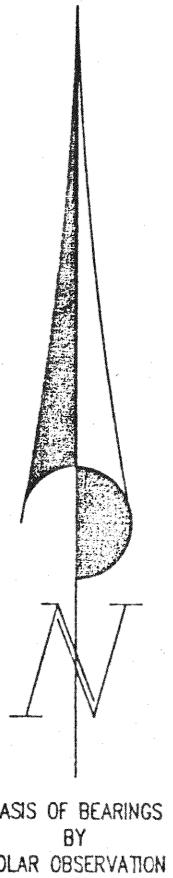


SCALE 1" = 500'

SHEET 3 OF 4 SHEETS

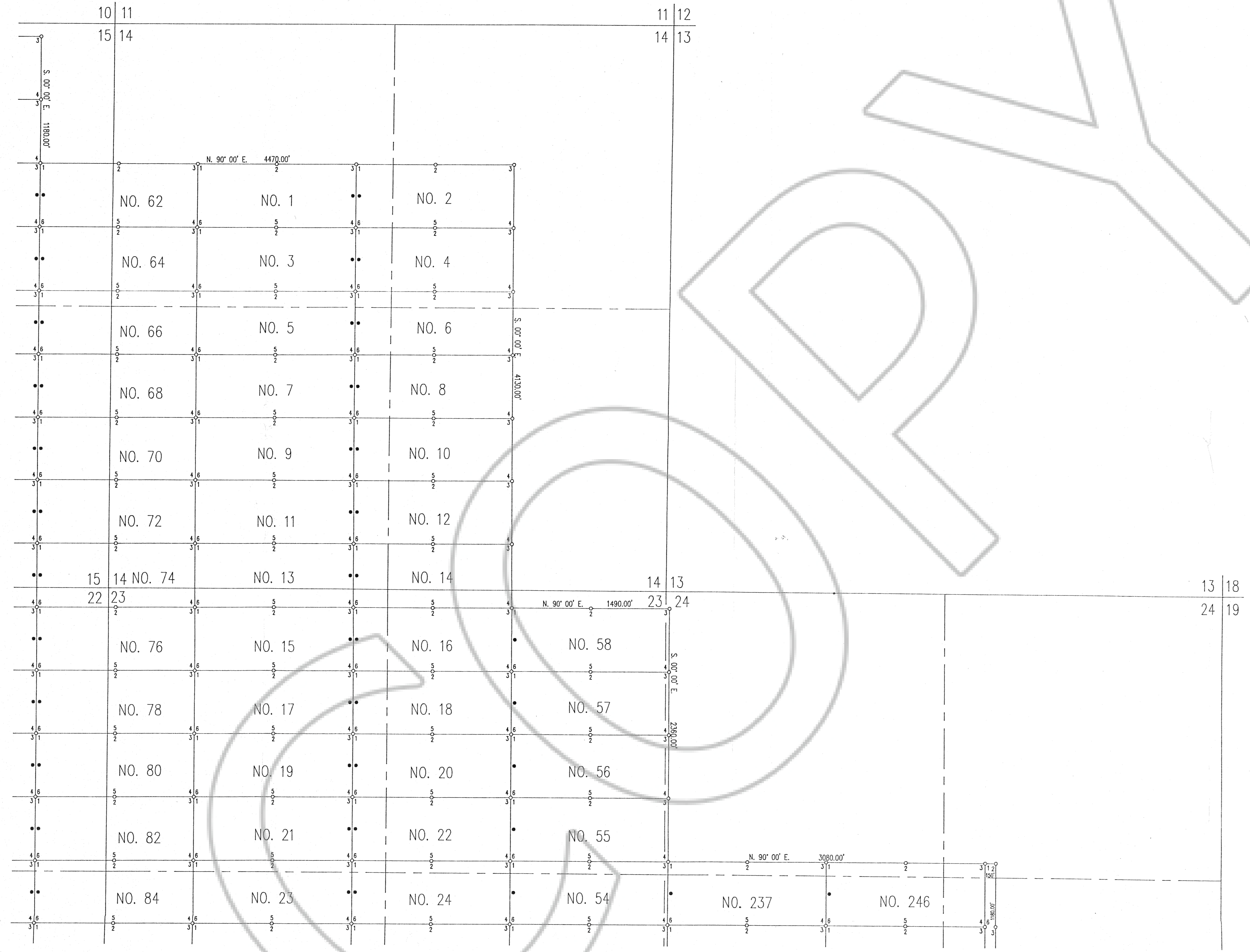
132002  
 PREPARED BY  
 BOUNDY & FORMAN, INC.  
 ELY, NEVADA  
 FEBRUARY, 1990.

MAP SHOWING  
 SIM LODE MINING CLAIMS  
 IN  
 T.25 N., R.49 E., M.D.B. & M.  
 EUREKA COUNTY, NEVADA  
 FOR  
 SANTA FE PACIFIC MINING, INC.



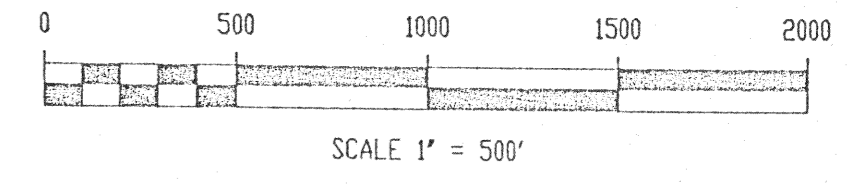
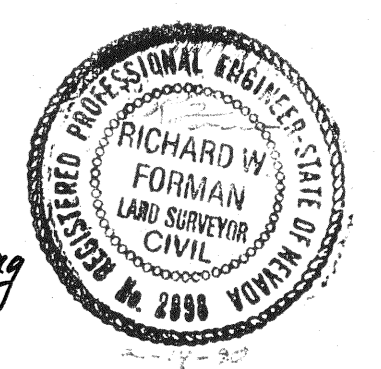
BASIS OF BEARINGS  
BY  
SOLAR OBSERVATION

JOINS SHEET No.2



JOINS SHEET No.3

FILED AT THE REQUEST OF *Santa Fe Pacific Mining*  
 on *March 7* 19 *90*, at *28* mins, past *11* A.M.,  
 RECORDS OF EUREKA COUNTY, NEVADA M. N. REBALEATI, Recorder  
 File No. *132002* Fee \$ *6.45*



SHEET 4 OF 4 SHEETS

132002

PREPARED  
 BY  
 BOUNDY & FORMAN, INC.  
 ELY, NEVADA  
 FEBRUARY, 1990.

MAP SHOWING  
 SIM LODE MINING CLAIMS  
 IN  
 T.25 N., R.49 E., M.D.B. & M.  
 EUREKA COUNTY, NEVADA  
 FOR  
 SANTA FE PACIFIC MINING, INC.