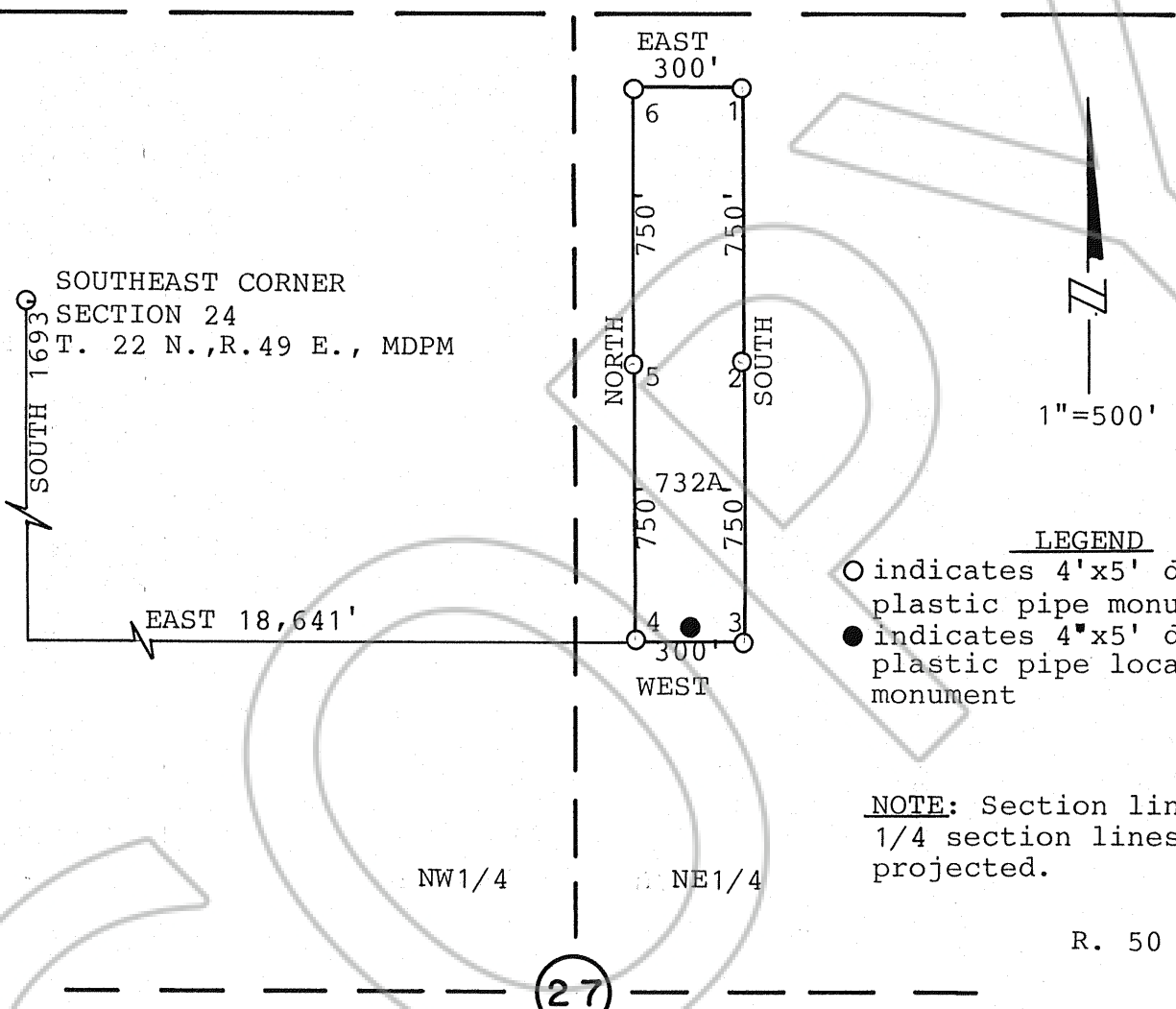


T. 22 N.



LEGEND

- indicates 4'x5' durable plastic pipe monument
- indicates 4'x5' durable plastic pipe location monument

NOTE: Section lines and 1/4 section lines are projected.

NW1/4

NE1/4

R. 50 E.

27

SW1/4

SE1/4

LOCATION DATE- 732A
APRIL 12, 1990

MAP OF THE
JASPER LODGE MINING CLAIMS
 EUREKA COUNTY, NEVADA

LOCATED BY TERRY ZENK
 AGENT FOR
 ATLAS PRECIOUS METALS, INC.
 370 17th ST., SUITE 3150
 DENVER, CO 80202-5631
 APRIL 16, 1990

APEX SURVEYING, INC. RIVERTON, WY

FILED AT THE REQUEST OF Apex Surveying
 on April 23 1990, at 10 mins, pas MDPM,
 RECORDS OF EUREKA COUNTY, NEVADA M. N. REBALEATI, Recorder
 File No. 132143 Fee \$ 15.00