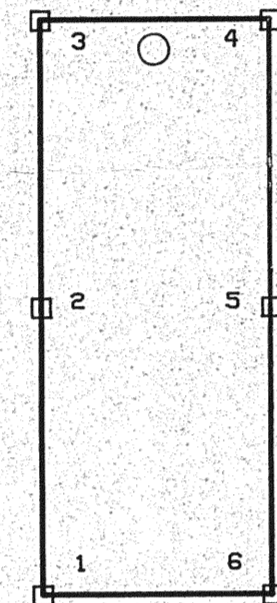
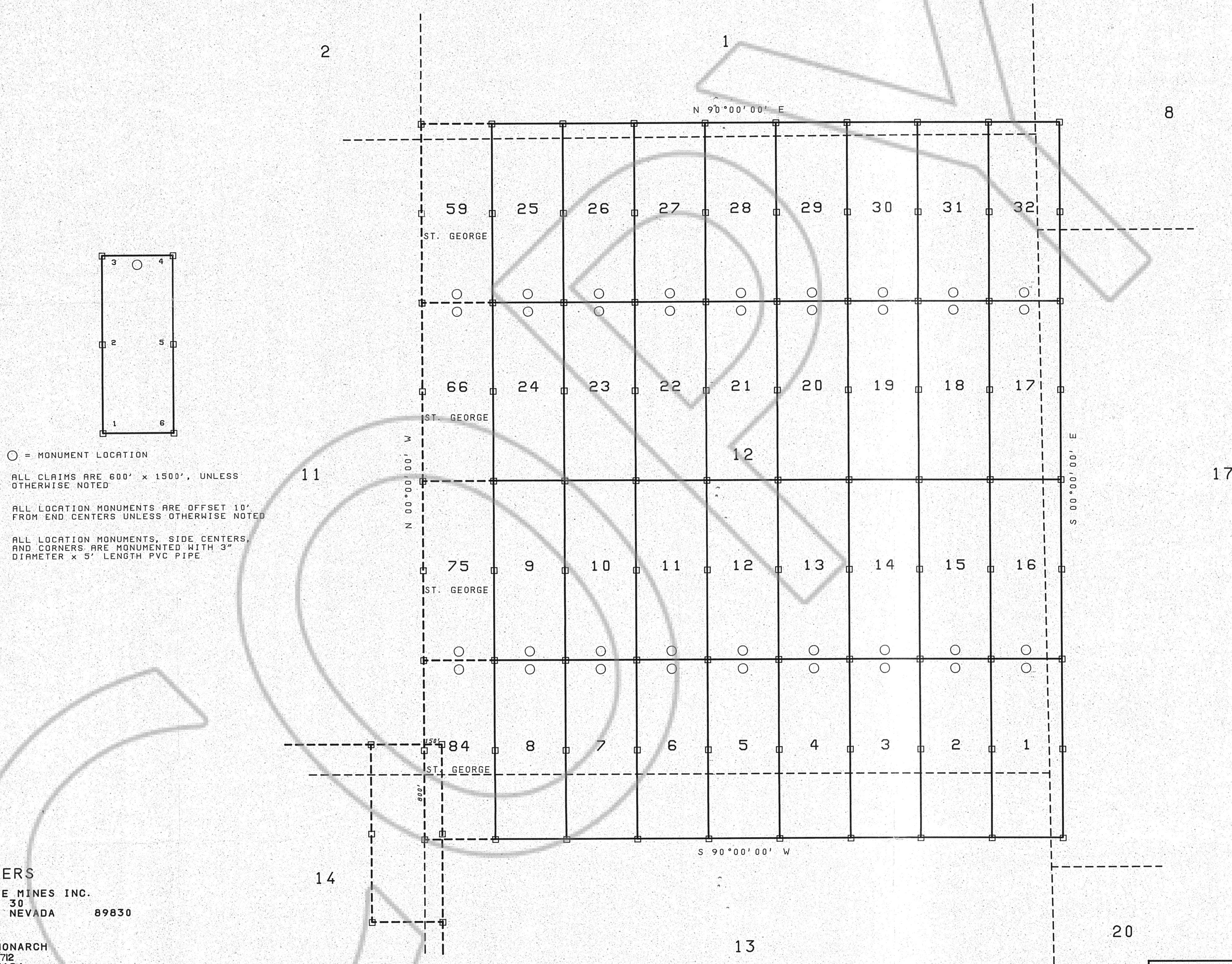


MAP of IU LODE CLAIMS



○ = MONUMENT LOCATION
 ALL CLAIMS ARE 600' x 1500', UNLESS OTHERWISE NOTED
 ALL LOCATION MONUMENTS ARE OFFSET 10' FROM END CENTERS UNLESS OTHERWISE NOTED
 ALL LOCATION MONUMENTS, SIDE CENTERS, AND CORNERS ARE MONUMENTED WITH 3" DIAMETER x 5' LENGTH PVC PIPE

OWNERS
 GOLD BUTTE MINES INC.
 P. O. BOX 30
 MONTELLLO, NEVADA 89830
 BULLION MONARCH
 P. O. BOX 712
 ELKO, NEVADA 89801

SCALE: 1" = 500'
 LOCATED MAY.3 1990

FILED AT THE REQUEST OF Goldex
 on May 9 1990, at 33 mins, East 1p M.
 RECORDS OF EUREKA COUNTY, NEVADA M. N. REBELETTI, Recorder
 File No. 132300 Fee \$ 480.00

MAP of IU LODE CLAIMS TOWNSHIP 33N RANGE 50E MOUNT DIABLO MERIDIAN EUREKA COUNTY, NEVADA			
SCALE: 1" = 500'	DR. BY JMA DATE: 4/26/90	TRACING No. L - 9387	REVISIONS
SHEET 1 of 1		PREPARED BY DUDLEY & ASSOCIATES	