

22

23

27

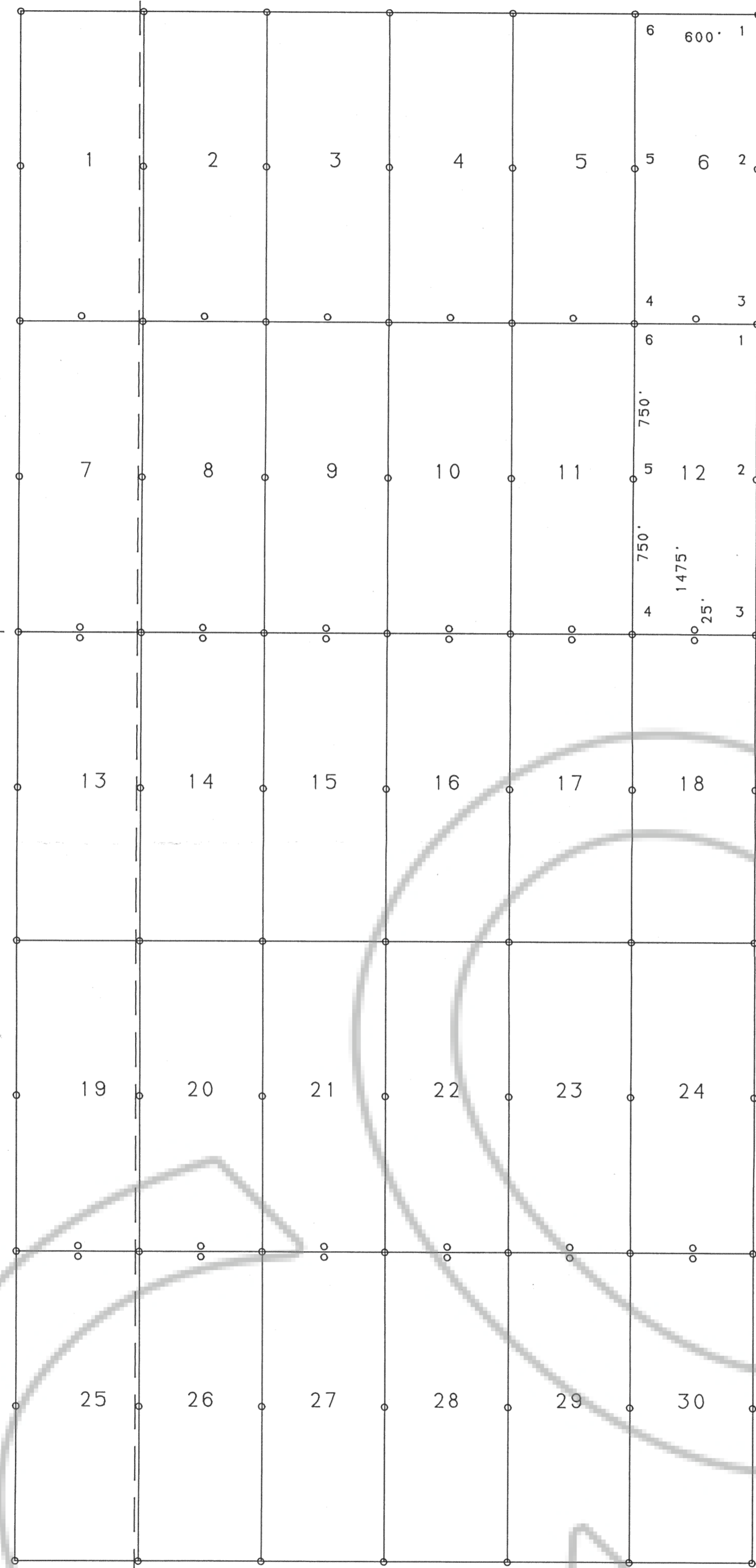
26

T. 18 N.

T. 17 N.

3

2

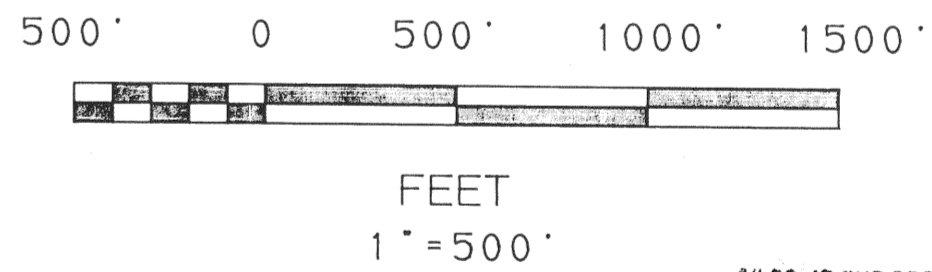


CORNER NUMBERS & DIMENSIONS TYPICAL OF CLAIMS ON THIS MAP.

TIE: FROM THIS CORNER TO THE SE CORNER OF SECTION 19, T. 18 N., R. 54 E., MDBM IS APPROXIMATELY 12.790 FEET AT A BEARING OF N. 90° E.



LOCATION DATES: O.R. 1 THROUGH 18 4/18/90
O.R. 19 THROUGH 30 4/19/90



FILED AT THE REQUEST OF MINNOVA (US) INC.
 on 5/17 19 90, at SE mins. past 21 M.
 RECORDS OF EUREKA COUNTY, NEVADA M. N. REBELETTI, Recorder
 File No. 132318 Fee \$ 480

NOTE: ALL MONUMENTS ARE 3"X 5" PVC PIPE
 THIS CLAIM GROUP IS SITUATED IN AN UNSURVEYED AREA
 SECTION LINES ARE PROJECTED AND BASED ON THE USGS
 PINTO SUMMIT QUADRANGLE, NEVADA.

RECORDERS STAMP	MINNOVA (US) Inc. 740 FREEPORT BOULEVARD, SUITE 101 SPARKS, NEVADA 89431	
	MAP OF THE LODE MINING CLAIMS O.R. CLAIM GROUP 1 THROUGH 30 (Eureka Project)	
	SECTIONS 22, 23, 26, & 27, T. 18 N., R. 53 E., MDBM UNSURVEYED EUREKA MINING DISTRICT, EUREKA COUNTY, NEVADA.	
	SCALE: 1" = 500'	DATE: 5/3/90
DRAWN BY: MINEX EXPLORATION	CHKD. BY: B. BREEN	DWG. NO. MINNOVA

132318