

CORNER RECORD

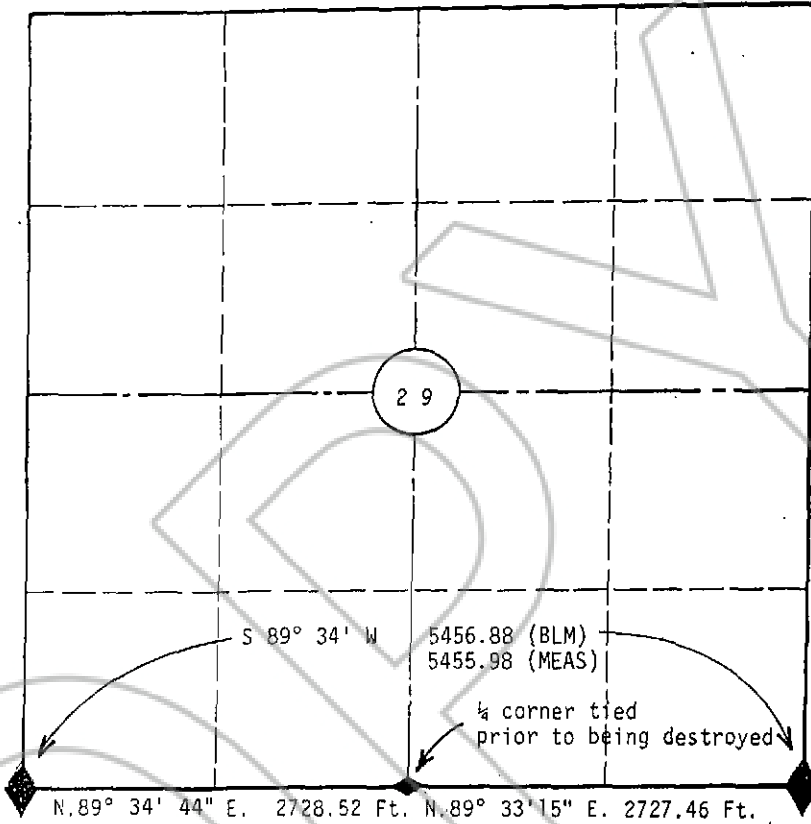
Filed as required by Statutes of Nevada, 1969, Chapter 366.

132391

Sheet 1 of 1 sheets.

Sec. 29 Twp. 36 N. Range 50 E, Mt. Diablo PM.

County of Eureka, State of Nevada.



Remarks: 1986 B.L.M. Aluminum Cap was destroyed by mining process (S $\frac{1}{2}$ of Sec. 29)

Found 1986 Aluminum Caps & Pipes set by B.L.M.

Basis of Bearings- BLM, the South Line of Section 29

BLM Dimensions from resurvey plat approved April 3, 1987

SURVEYOR'S CERTIFICATE.

I, RONALD C. HOLVERSON, Registered Land Surveyor No. 8001 in the State of Nevada do hereby certify that the foregoing is a true, complete and accurate representation of the monument, or monuments, recovered, rehabilitated, restored, re-established or otherwise effected and mentioned in the foregoing Corner Record.

Date survey was completed May 16, 1990
 Date Corner Record filed May 24, 1990

Ronald C. Holverson
 Registered Land Surveyor.

Accepted for filing on this 25th day of May, 1990
 in the office of the County Recorder Eureka County,
 State of Nevada.

M. J. Rebeault
 Eureka County Recorder
 By Selma Etcheberry - Deputy
 BOOK 210 PAGE 482

132391