

R. 53 E.

30

29

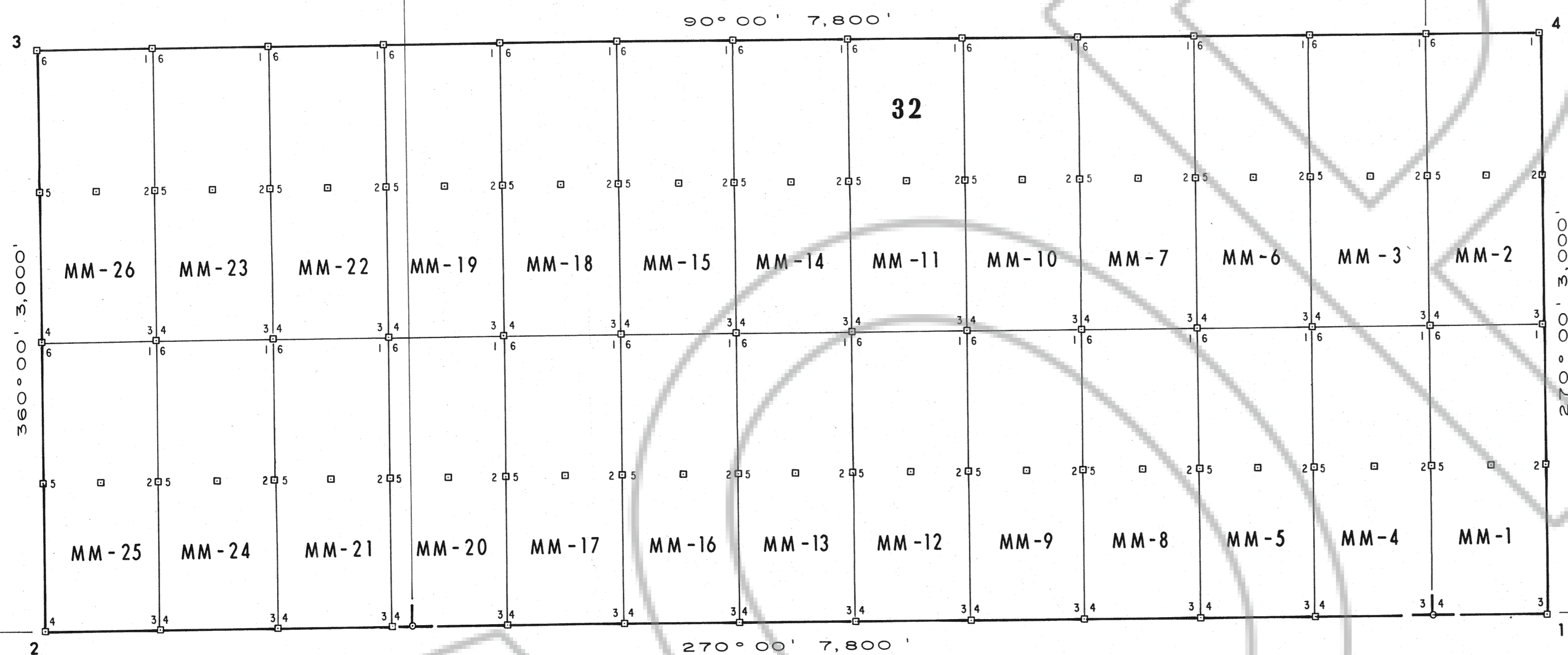
28

EXPLANATION

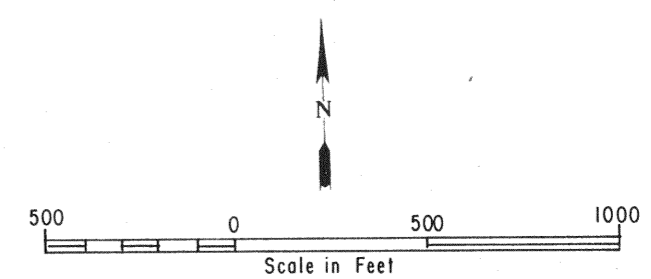
31

32

33



T. 19 N.
T. 18 N.



REVISION RECORD

Approved By: _____

132423

MERLIN MINING CO.

46 West 300 South, Suite 200-Salt Lake City, Utah, 84101
American Towers Commercial Plaza

Lode Claim Group MM-1 to MM-26
SPRING VALLEY AREA

Diamond Mining District Eureka County Nevada

Scale 1" = 500' Date May 17, 1990

Mapping J. E. & Joseph Owens

Drafting J. Owens

D-SV-5

Revised

FILED AT THE REQUEST OF *Merlin Mining*
on *June 1* 19 *90* at *11* a.m., past *8 A.M.*
RECORDS OF EUREKA COUNTY, NEVADA H. N. REBALEATI, Recorder
File No. **132423** Fee \$ *3.90*