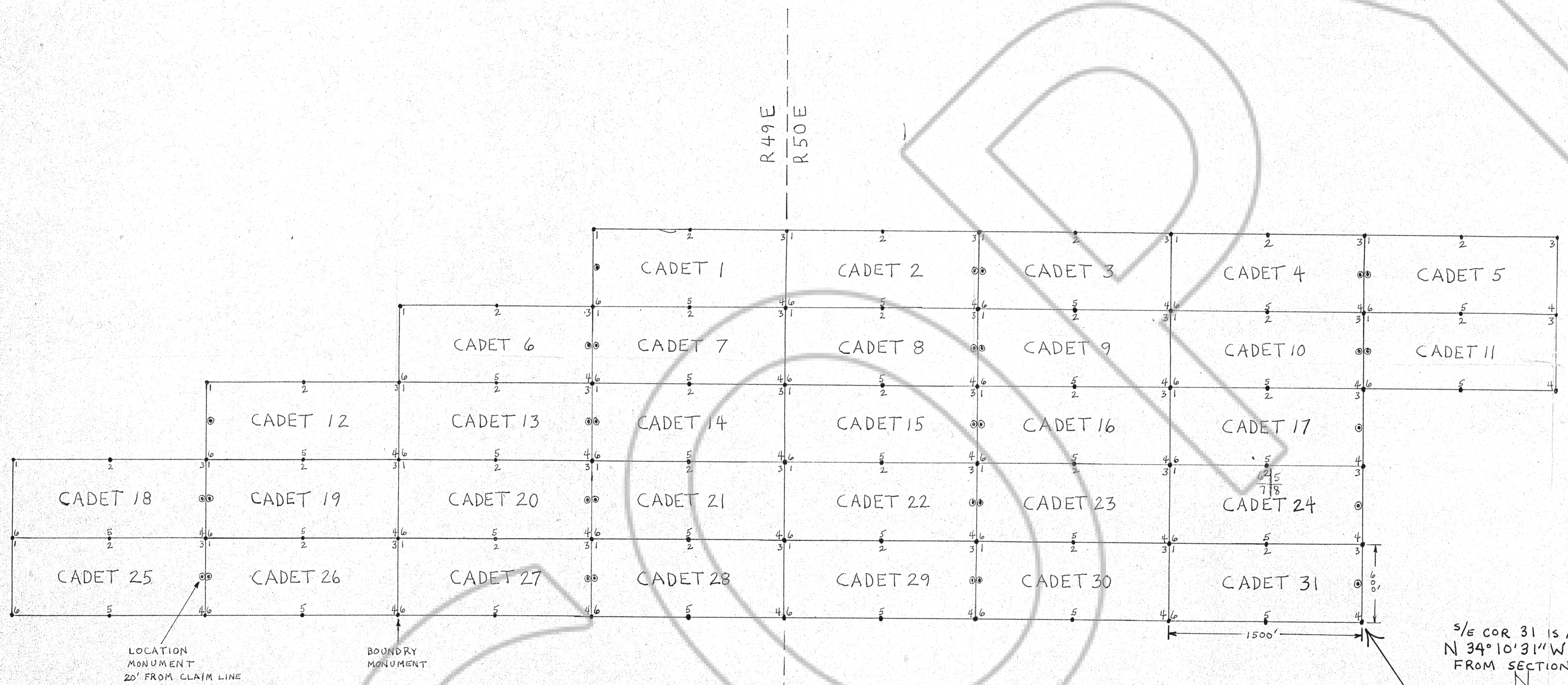


THE MAP OF THE
 CADET 1-31
 LODE CLAIM GROUP
 SECTIONS 1,2 T25N/R49E
 SECTIONS 5,6 T25N/R50E
 EUREKA COUNTY, NEVADA

LOCATED:
 BY: WILD ROSE MGMT. INC.
 316 BRIDGER ST.
 SUITE 147
 LAS VEGAS, NV.
 89101

SCALE: ONE INCH = 500 FEET

FILED AT THE REQUEST OF *Nevada Gravity Explorations*
 on *June 15 19 90* at *SR* MINES, DIST. *120*
 REC'D OFFICE OF EUREKA COUNTY, NEVADA H. N. REBALEA COUNTY CLERK
 Fee No. *132504* Fee \$ *465*



S/E COR CADET 31
 X= 280,465 NEVADA
 Y= 1939,103 EAST ZONE

S/E COR 31 IS AT
 N 34°10'31" W 1272'
 FROM SECTION COR

6	5
7	8