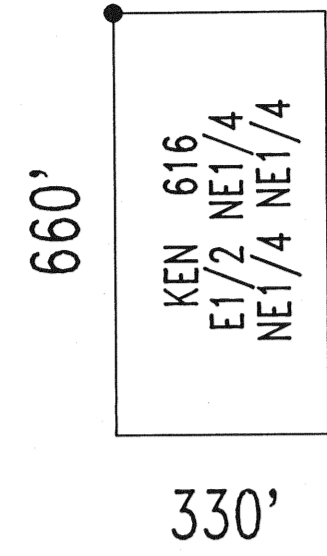


Location Monument



TYPICAL LEGAL SUBDIVISION  
of KEN MILL SITE CLAIM

Tie From: SW Cor Sec36, T36N, R49E, MDB&M  
To: KEN 616 S57°51'28"W - 10018.7'

SECTION 10  
T35N, R49E, MDB&M

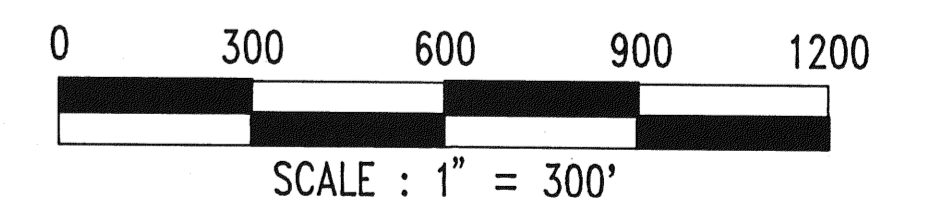
KEN 649 W1/2 SW1/4 SW1/4 NW1/4	KEN 617 W1/2 SW1/4 NW1/4 NW1/4	KEN 601 W1/2 NW1/4 NW1/4 NW1/4
KEN 650 E1/2 SW1/4 SW1/4 NW1/4	KEN 618 E1/2 SW1/4 NW1/4 NW1/4	KEN 602 E1/2 NW1/4 NW1/4 NW1/4
KEN 651 W1/2 SE1/4 SW1/4 NW1/4	KEN 619 W1/2 SE1/4 NW1/4 NW1/4	KEN 603 W1/2 NE1/4 NW1/4 NW1/4
KEN 652 E1/2 SE1/4 SW1/4 NW1/4	KEN 620 E1/2 SE1/4 NW1/4 NW1/4	KEN 604 E1/2 NE1/4 NW1/4 NW1/4
KEN 653 W1/2 SW1/4 SE1/4 NW1/4	KEN 621 W1/2 SW1/4 NE1/4 NW1/4	KEN 605 W1/2 NW1/4 NE1/4 NW1/4
KEN 654 E1/2 SW1/4 SE1/4 NW1/4	KEN 622 E1/2 SW1/4 NE1/4 NW1/4	KEN 606 E1/2 NW1/4 NE1/4 NW1/4
KEN 655 W1/2 SE1/4 SE1/4 NW1/4	KEN 623 W1/2 SE1/4 NE1/4 NW1/4	KEN 607 W1/2 NE1/4 NE1/4 NW1/4
KEN 656 E1/2 SE1/4 SE1/4 NW1/4	KEN 624 E1/2 SE1/4 NE1/4 NW1/4	KEN 608 E1/2 NE1/4 NE1/4 NW1/4
KEN 657 W1/2 SW1/4 SW1/4 NE1/4	KEN 625 W1/2 SW1/4 NE1/4 NW1/4	KEN 609 W1/2 NW1/4 NE1/4 NW1/4
KEN 658 E1/2 SE1/4 SW1/4 NE1/4	KEN 626 E1/2 SW1/4 NE1/4 NW1/4	KEN 610 E1/2 NW1/4 NE1/4 NW1/4
KEN 659 W1/2 SE1/4 SW1/4 NE1/4	KEN 627 W1/2 SE1/4 NE1/4 NW1/4	KEN 611 W1/2 NE1/4 NE1/4 NW1/4
KEN 660 E1/2 SE1/4 SW1/4 NE1/4	KEN 628 E1/2 SE1/4 NE1/4 NW1/4	KEN 612 E1/2 NE1/4 NE1/4 NW1/4
KEN 661 W1/2 SW1/4 SE1/4 NE1/4	KEN 629 W1/2 SW1/4 NE1/4 NW1/4	KEN 613 W1/2 NW1/4 NE1/4 NW1/4
KEN 662 E1/2 SE1/4 SE1/4 NE1/4	KEN 630 E1/2 SW1/4 NE1/4 NW1/4	KEN 614 E1/2 NW1/4 NE1/4 NW1/4
KEN 663 W1/2 SE1/4 SE1/4 NE1/4	KEN 631 W1/2 SE1/4 NE1/4 NW1/4	KEN 615 W1/2 NE1/4 NE1/4 NW1/4
KEN 664 E1/2 SE1/4 SE1/4 NE1/4	KEN 632 E1/2 SE1/4 NE1/4 NW1/4	KEN 616 E1/2 NE1/4 NE1/4 NW1/4

KEN MILL SITE CLAIM LOCATION DATES

KEN 601 - 664 SEPTEMBER 6, 1989

LEGEND

● LOCATION MONUMENT 3"x 5'-0" PVC PIPE WITH LOCATION NOTICE



FILED AT THE REQUEST OF:  
NEWMONT GOLD COMPANY  
TIME: 4:50 p.m.  
DATE: 6/20/90  
FILE No 132579  
*M. J. Roberts*  
EUREKA COUNTY RECORDER

132579

AMENDED MAP OF  
KEN 601 - 664  
MILL SITE CLAIMS  
SITUATED IN SECTION 10, T35N, R49E, MDB&M  
BY  
NEWMONT GOLD COMPANY  
P.O. BOX 669  
CARLIN, NEVADA 89822