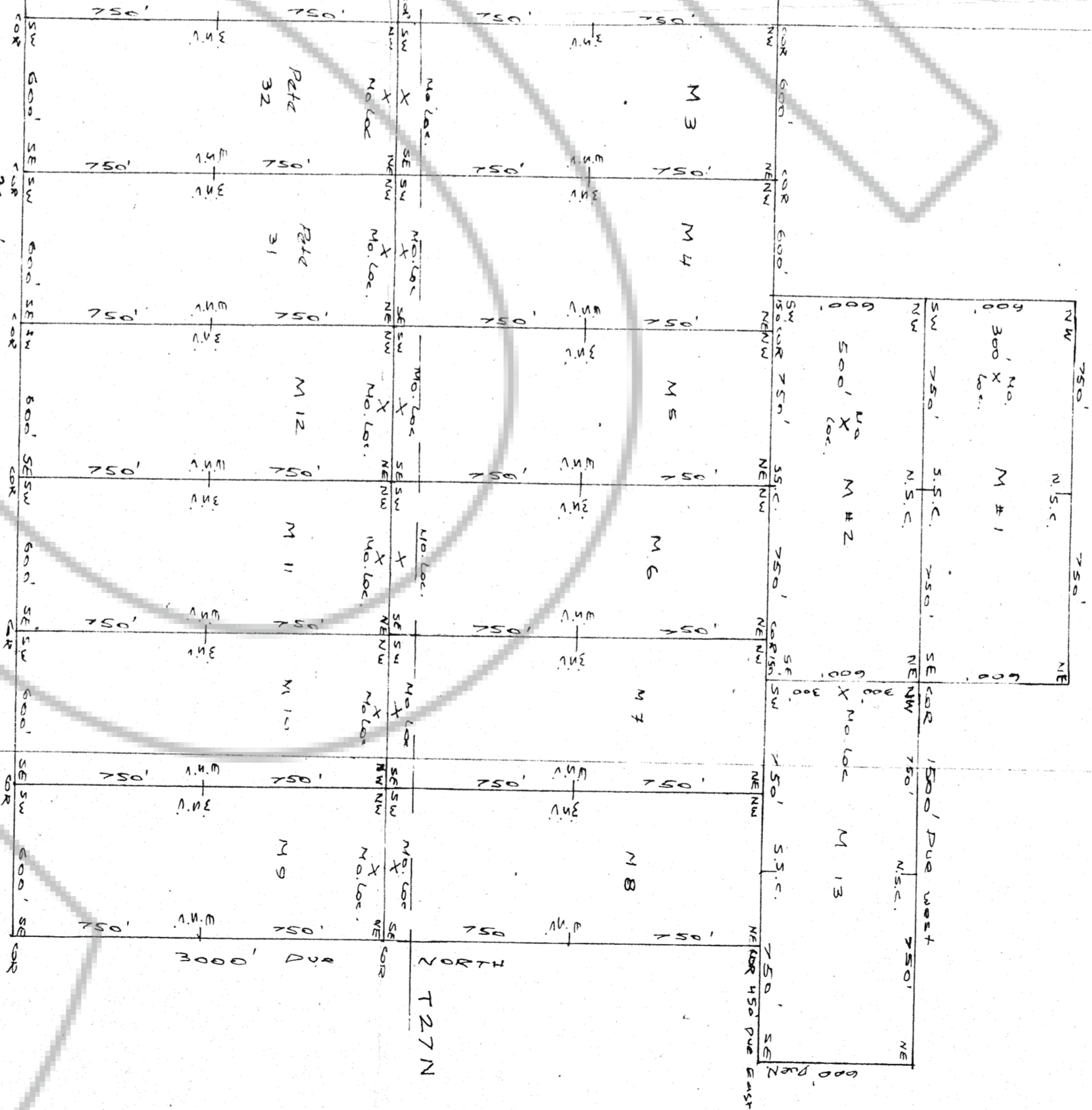
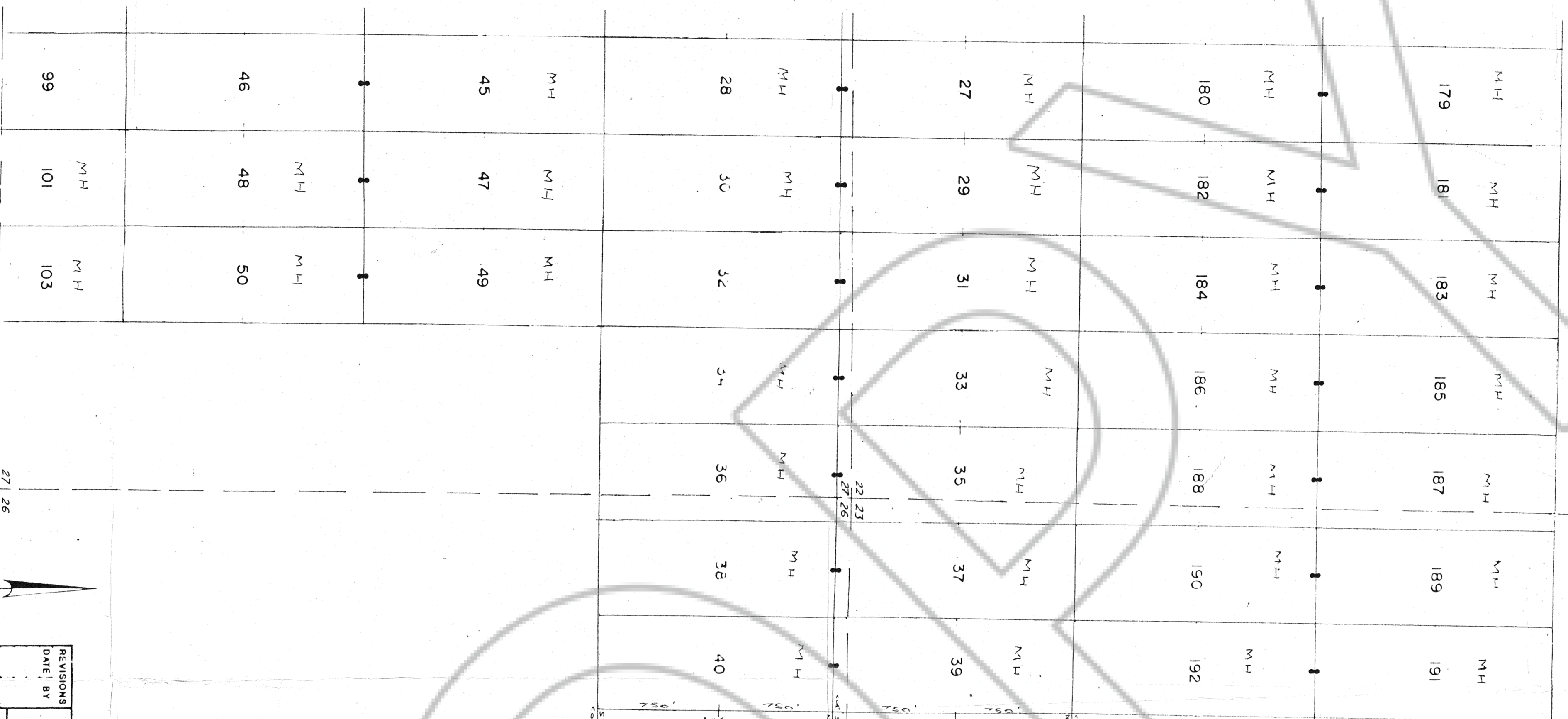


R 52 E



MH	MH	MH	MH	MH	MH	MH	MH	MH	MH	MH	MH
179	181	183	185	187	189	191					
MH	MH	MH	MH	MH	MH	MH	MH	MH	MH	MH	MH
180	182	184	186	188	190	192					
MH	MH	MH	MH	MH	MH	MH	MH	MH	MH	MH	MH
27	29	31	33	35	37	39					
MH	MH	MH	MH	MH	MH	MH	MH	MH	MH	MH	MH
28	30	32	34	36	38	40					
MH	MH	MH	MH	MH	MH	MH	MH	MH	MH	MH	MH
45	47	49									
MH	MH	MH	MH	MH	MH	MH	MH	MH	MH	MH	MH
46	48	50									
MH	MH	MH	MH	MH	MH	MH	MH	MH	MH	MH	MH
99	101	103									

REVISIONS	DATE	BY
<b>M LODGE CLAIMS</b>		
Location: P. W. Lacey, P. Eng.		
MINERAL HILL AREA		
COUNTY: EUREKA	STATE: NEVADA	
SCALE: 0 500 1000 feet	M.A.P. No.	
DATE: 6-17-90	DRAWN BY: P.W.L.	GRANTED BY: P.C.U.
		SHEET 1

FILED AT THE REQUEST OF Patricia M. Lacey  
 of Yuba Co., 19 20 19 27 mins, dist. 50 M.  
 Recorder 15000 COUNTY, NEVADA IN N. REBELENTI, Recorder  
 Fee \$ 200