

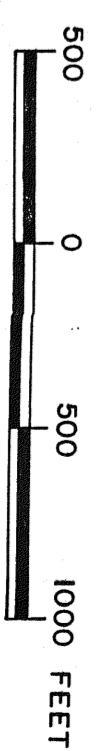
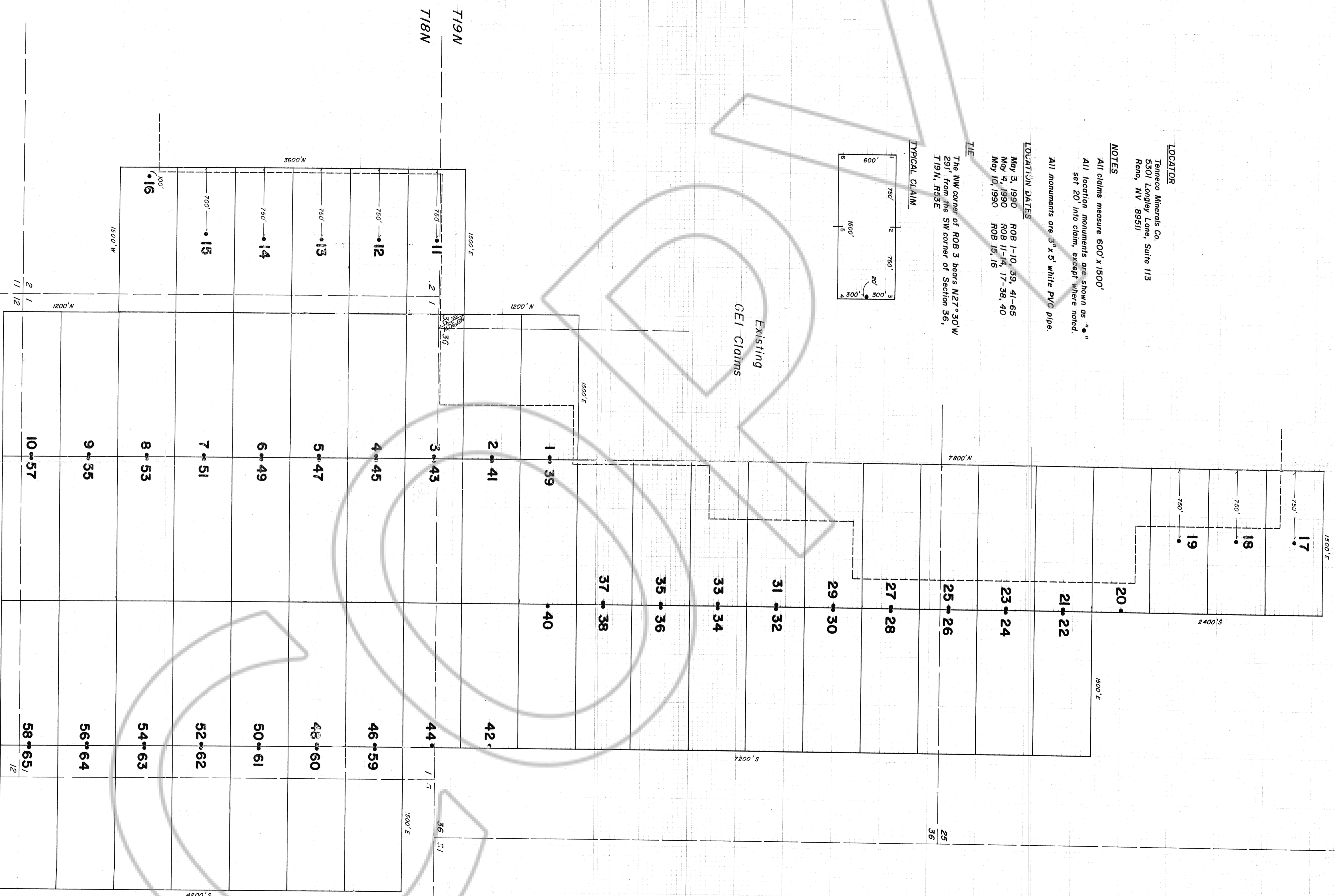
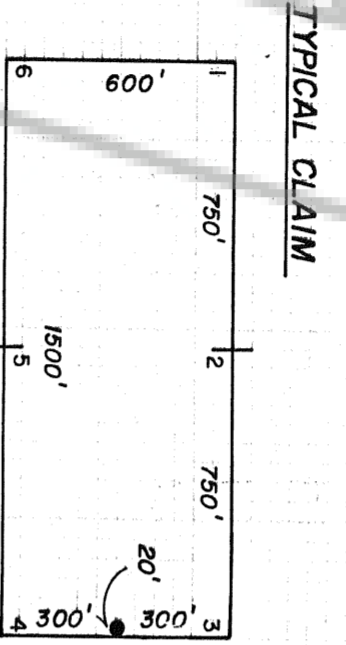
R53E R54E

LOCATOR
 Tenneco Minerals Co.
 5301 Longley Lane, Suite 113
 Reno, NV 89511

NOTES
 All claims measure 600' x 1500'
 All location monuments are shown as "•"
 set 20' into claim, except where noted.
 All monuments are 3" x 5' white PVC pipe.

LOCATION DATES
 May 3, 1990 ROB 1-10, 39, 41-65
 May 4, 1990 ROB 11-14, 17-36, 40
 May 10, 1990 ROB 15, 16

TILE
 The NW corner of ROB 3 bears N27°30'W
 291' from the SW corner of Section 36,
 T19N, R53E



ROB (1-65) LODE MINING CLAIMS

Sections 25, 35, 36 T19N, R53E
 Sections 1, 2, 11, 12 T18N, R53E
 Section 6 T18N, R54E
 Eureka Mining District
 Eureka County, Nevada

prepared by T and T EXPLORATION SERVICES, INC.

FILED AT THE REQUEST OF *Consolidated Minerals*
 on *July 8* 19*90* at *31* mins, PM, 19*90*, M.
 RECORDS DIVISION, COUNTY CLERK, NEVADA, IN N. REBUTTAL SECTION
 FILE NO. *1325315* Fee \$ *85*